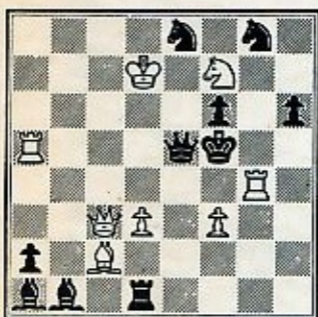


CHESS

BY
JERRY LONG

Problem 2

by
William L. Barclay
1960



(Solution Thursday)

White to move and mate in two. The answer to problem 1 is Q-QR5!

The King's Gambit was the classic weapon of attack in the days of the romantic school. After tournaments became more frequent, at the turn of the century, the gambit gradually began to fall out of fashion. Although rarely played in master tournaments today, except by such daredevils as Spasski, Bronstein and Robert Byrne, it is still appealing because of its unparalleled wealth of variations and ideas. The following hors d'oeuvres (Cunningham variation) illustrate the pyrotechnics of this swashbuckling opening.

GAME 1

| | WHITE | BLACK |
|-----|---------|-------|
| 1. | P-K4 | P-K4 |
| 2. | P-KB4 | PXP |
| 3. | N-KB3 | B-K2 |
| 4. | B-B4 | N-KB3 |
| 5. | N-B3 | NXP |
| 6. | N-K5 | B-R5+ |
| 7. | P-KN3 | PXP |
| 8. | BXP+ | K-B1 |
| 9. | Q-Q1 | PXP+ |
| 10. | KXP | B-N6+ |
| 11. | K-N2 | NXN |
| 12. | Q-R5! | Q-K2 |
| 13. | N-N6+!! | |

GAME 2

| | WHITE | BLACK |
|-----|-----------|-------|
| 1. | P-K4 | P-K4 |
| 2. | P-KB4 | PXP |
| 3. | N-KB3 | B-K2 |
| 4. | B-B4 | B-R5+ |
| 5. | P-KN3!? | PXP |
| 6. | O-O | PXP+ |
| 7. | K-R1 | B-K2? |
| 8. | BXP+ | KXB |
| 9. | N-K5+ | K-K3 |
| 10. | Q-N4+ | KXN |
| 11. | Q-B5+ | K-Q3 |
| 12. | Q-Q5 mate | |

COMING EVENTS: The Concord Chess Club will hold its first King's Gambit Tournament (the moves 1. P-k4 P-K4, 2. P-KB4. . .are required) at the Concord Recreation Center, 2974 Salvio St., Concord on Friday, September 8, 1967 at 8:00 p.m. Entry fee is \$1.00 plus a Concord Chess Club membership, which is prorated quarterly. Advance registrations may be mailed to Bob Oyler, Club Treasurer, 917 San Carlos Dr., Antioch, Calif.

The Berkeley Y.M.C.A. Chess Club will hold a Rapid Transit Tournament (ten seconds per move) at the Berkeley Y.M.C.A., 2001 Allston Way, Berkeley 4, California on Wednesday, September 13, 1967 at 8:00 p.m. Cash prizes will be awarded to 1st, 2nd and 3rd-place winners in each of three divisions; "E/A", "B" and "C". Entry fee is \$2.00. For information phone 682-3497.

CHAMPIONSHIP: For the second straight year the Concord Chess Club has won C.F.N.C.'s East Bay League chess championship! Even more impressive is the Concord-A's match record over the past two seasons; 16 wins, 6 draws and 0 losses!! Members of the team were; Ed Bogas, Jim Bush, Jim Fosaaen, Ray Guzman, Jerry Long, Frank Olvera (who didn't lose a single game this season), Robert Oyler, Roy Turner (Team Captain) and Mark Watson.

EAST BAY LEAGUE RESULTS

| Team | Match | pt |
|--------------------|-------|----|
| 1. Concord-A | 7½ | ½ |
| 2. Berkeley | 7 | 1 |
| 3. Livermore | 5½ | 2½ |
| 4. Oak. Knightowls | 4½ | 3½ |
| 5. Concord-B | 3 | 5 |
| 6. Hayward | 3 | 5 |
| 7. Walnut-Creek | 2 | 6 |
| 8. Richmond | 2 | 6 |
| 9. Oak. Stingers | 1½ | 6½ |