

Concord

Press

February 15, 1968
VOL. II, No. 5

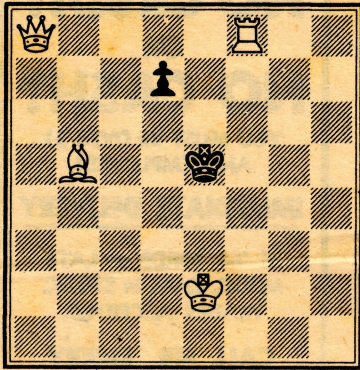


CHESS

BY
JERRY LONG

Problem 19
by
Antonio Bellas
1949

(Solution next week)



White to move and mate in three.

Send problem solutions and any games, news or comments for publication to the Concord Press, c/o Jerry Long, 1476 Wharton St., Concord, Cal. All materials submitted become the property of the Concord Press and will not be returned.

Ninety-seven players participated in the C.F.N.C. Open Championships held at the Berkeley Y.M.C.A. on February 3rd and 4th, 1968. The winners were: M/E Division; 1st James Ulrich, Berkeley, 4 1/2-1/2 and 2nd John Blackstone, Saratoga, 4-1; "A" Division; 1st Ken Yamamoto, San Rafael, 4 1/2-1/2 and 2nd Mark Watson, Concord, 4-1; "B" Division; 1st Henry Miller, Berkeley, 4 1/2-1/2 and 2nd Earl Ipsen, San Francisco, 4-1, "C" Division; 1st Bruce Lamon, Berkeley, 4 1/2-1/2 and 2nd Harry Radke, San Jose, 4-1. Thirty players competed in C.F.N.C.'s Junior Championships, which was also held at the Berkeley Y.M.C.A. on the same dates. The winners were: Group I (16-18): 1st David Amkraut, Palo Alto, 4-1, 2nd Van Fong, Hayward, 3 1/2-1 1/2, and 3rd Fred Crosby, Hayward, 3 1/2-1 1/2; Group II (13-15): 1st Jay Spingarn, Sunnyvale, 4 1/2-1/2, 2nd Ridge Schneider, Redwood City, 3 1/2-1 1/2, and 3rd Bill Clipson, Concord, 3 1/2-1 1/2; Group III (10-12): 1st David Glanville, Oakland, 5-0, 2nd Eden Lee, Oakland, 3 1/2-1 1/2, and 3rd James Shearer, Livermore, 3-2; Group IV (9 and under): 1st Matthew Sullivan, San Jose, 4-0, David Mitchell (2nd), Concord, 2-2, and 3rd Terry Garnett, Concord, 2-2.

C.F.N.C. league competition this year is indeed exciting! With the seventh and final round remaining to be played, the Concord-A team leads the Contra Costa League with 5 1/2 match points out of 6. Walnut Creek also has a score of 5 1/2-1/2 for match play, but trails in second place one and one-half game points behind Concord. The Oakland Knighthawks top the East Bay League with 5 out of 6 match points, Berkeley, however, is close in pursuit with a score of 4 1/2 - 1 1/2 in match points. The Lockheed-B team leads the Peninsula League with a perfect record of 6-0 in match points. Daly City is second with 4 1/2 - 1 1/2. However, three rounds remain to be played in the Peninsula League. Lockheed-B must face IBM and Lockheed - A thus, anything is still possible.

The following game was played during the New Year Open Championships held at Walnut Creek on January 6th and 7th, 1968. It is not a good game and has, for the most part, no instructive value. However, it should demonstrate to the struggling masses, "A", "B", "C" and "patzers" alike, that becoming an Expert is not a majestic metamorphosis which guarantees chess perfection. The only real expert quality of this game is the alacrity with which White resigned. Perhaps we can all benefit from that example.

CARO-KANN DEFENCE
Advance Variation

White: K. Grivainis
Black: T. Iwashita

- | | |
|-------------|-------|
| 1. P-K4 | P-QB3 |
| 2. P-Q4 | P-Q4 |
| 3. P-K5 | B-B4 |
| 4. N-K2 | P-K3 |
| 5. N-N3 | B-N3 |
| 6. P-KR4 | P-KR4 |
| 7. B-K2 | P-QB4 |
| 8. P-QB3 | N-QB3 |
| 9. B-K3 | PxP |
| 10. Pxp | Q-N3 |
| 11. Nxp | BxN |
| 12. BxB | RxB |
| 13. N-Q2 | R-R1 |
| 14. Resigns | |

Richard Shorman writes a great chess column for the Hayward Daily Review. It appears every Sunday and, we believe, will benefit players of all strengths.

The next C.F.N.C. Board of Director's meeting will be held March 6th, 1968 at the Berkeley Y.M.C.A., 2001 Allston Way, Berkeley at 8:00 pm.

COMING EVENTS

Central California Chess League Championships will be held on February 17 & 18, 1968 at 917-4th Street, Antioch beginning at 12:00 noon. 4 Rd SS. Trophies and Cash prizes will be awarded to M/E, A, B, C and Jr. Roy McCollough will direct. U.S.C.F. membership required.

The Concord Open Chess Championship will be held at the Concord Recreation Center, 2974 Salvio Sreet, Concord on February 24th and 25th, 1968 beginning at 12:00 noon. Trophies and cash prizes will be awarded to the 1st, 2nd, and 3rd-place winners in each of five divisions: M/E, A, B, C and Jr. Advance registration may be made by mail to Jerry Long, Club Director, 4080 Poplar Ave., Concord, Calif. (94521). (See attached announcement.)

WHERE TO PLAY CHESS

The Concord Chess Club meets every Friday night at the Concord Recreation Center, 2974 Salvio St., Concord.