

# THE CHESS-PLAYER.

[All communications for this department should be addressed to "Chess Editor Argonaut, 213 Dupont Street, San Francisco, Cal."]

The Chess Editor is absent for a few weeks at the East, during which he requests the indulgence of his correspondents. All solutions and other communications will be acknowledged upon his return.

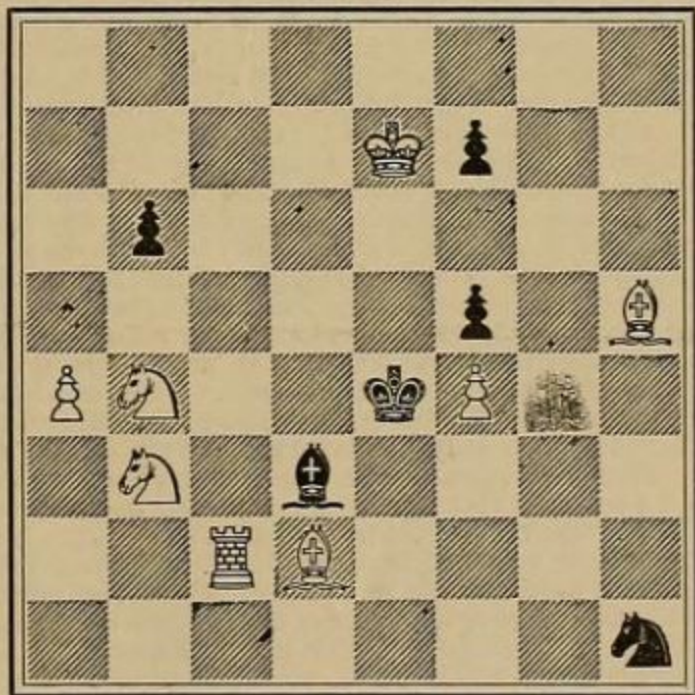
Problem No. CIV.—By C. H. Wheeler, South Lynne, Ill.  
*Composed for the Argonaut.*

WHITE—King at QKt4; Rooks at K2, KB sq; Bishop at KR3;  
Knights at Q2, QB4.

BLACK—King at Q6; Rook at QR8; Bishop at QKt8; Pawns at  
K4, QR7.

White to play and mate in two moves.

Problem No. CV.—By F. Hofmann, Munich.  
BLACK.



WHITE.

White to play and mate in three moves.