
53 Chess Clubs 259 Chess Players 37 Chess Publications
and Organizations and Libraries

S C A C C I C V O I C E

Central California's Chess Magazine
And
Official Organ Of The
Central California Chess Association
(An Affiliate Of The United States Chess Federation)

Jack Dennis,
of Oakland,
and Byron
Delaney, of
Hayward,
listen as
Leonard
Trotter,
Treasurer of
CCCA, expli-
cates a posi-
tion during
the CCCA's
Regional Open
Chess Tourna-



ment at Ber-
keley. Theo-
dore Ander-
son, codirec-
tor of the
tournament,
looks on. In
the fore-
ground, Ray-
mond Cuneo,
of Piedmont,
ponders a
move. (Left
to right.)

August 1968
Volume I
Number iv

*

MARTIN MORRISON. . . .
Editors
Central California
Chess Association
. ELWIN MEYERS

TOURNAMENT CALENDAR

4	August	18th Annual Sonoma Valley of the Moon Open Air Chess Festival	Sonoma
10-11	August	CCCA'S REGIONAL OPEN CHESS TOURNAMENT AT CONCORD (USCF-CCCA)	Concord
24-25	August	Oakland Chess Club's 5th Annual Summer Tournament (CFNC)	Oakland
28-29	Septem- ber	LERA Chess Club's Open	Sunnyvale
12-13	October	Carlemont Chess Club's Fall Open and Second High School Championships	Carlemont
12-13	October	Novato Open	Novato
19	October	FLIGHT OF THE BUMBLER B TOURNAMENT (USCF)	Monterey
16-17	November	Second Bechtel Open	San Francisco
14-15	December	OAKLAND CHESS CLUB'S 3RD ANNUAL BAY AREA AMATEUR CHESS CHAMPIONSHIP TOURNAMENT (USCF)	Oakland
4-5	January	NEW YEAR OPEN (USCF-CCCA)	Walnut Creek
15-16	February	CONCORD OPEN (USCF-CCCA)	Concord
24-25	May	WALNUT CREEK OPEN (USCF-CCCA)	Walnut Creek

[Tournament Organizers: Please let us know as soon as possible of tentative or definite tournament dates, so that we may be able to reserve the dates for you in the "Tournament Calendar." Details for tournaments will be found in the "News" Section. CCCA AFFILIATES' USCF TOURNAMENTS ARE CAPITALIZED IN THE TOURNAMENT CALENDAR.--EDS.]

NEWS

CCCA's Regional Open Chess Tournament at Berkeley

The CCCA's Regional Open Chess Tournament at Berkeley, sponsored by the Berkeley YMCA Chess Club, was held on the 20-21 July in the Palm Room of the Berkeley Central YMCA. The tournament drew 36 players, 22% of whom joined USCF at the tournament, thus continuing the USCF boom started by CCCA in this area. Thirty of the players played in the USCF division, in which K. Michael Goodall, of Berkeley, took the title, trophy, and the top money prize of 35% of the profit from the tournament. Top A was won by David Rapoport, of Berkeley; top B, by Sandor Tresz, of Oakland; and top C, by Robert Martinez, of Hayward. The full list of finish follows (equals 1/2):

1	K. Michael Goodall	5	11	Bernard Lainson	3	21	Douglas Turney	2
2	David Rapoport	4	12	Marc McNow	3	22	Jack Dennis	2
3	Sandor Tresz	4	13	Everett McNally	3	23	Mr. Roust	1
4	Mr. Gross	4	14	Robert Clipson	3	24	Mr. Grad	1
5	Kon Gravinis	3	15	Robert Trenberth	2	25	Donald Clapp	1 (W)
6	Gary Weber	3	16	Robert Martinez	2	26	Thomas Dorsch	1 (W)
7	Samuel Naylor VI	3	17	Harold Barnett	2	27	James Bush	1 (W)
8	Duncan Campbell	3	18	Mr. Shearer	2	28	Paul Westerline	1
9	Raymond Cuneo	3	19	Leonard Trottier	2	29	F. Jack Ulrich	0 (W)
10	Charles Maddigan	3	20	Leon Wait	2	30	Saleh Mujahed	0 (W)

The CCCA (unrated) division saw Lupe Lopez, of Hayward, taking top B and Johann Weiler, of Walnut Creek, taking top C. David Wait, of Walnut Creek, won the Junior Section.

*

Briefer News Notes

The Fourth Annual Monterey International Open Chess Tournament (USCF) drew 73 players. Kon Gravinis, of Oakland, won the title of Monterey International Open Champion. E. Syrett, of Stanford, and A. Suhobek, of Monterey, tied for second and third place respectively. (8-9 June)

The Walnut Creek Open (18-19 May), the first USCF tournament ever held in that area, drew 42 players, eighteen of whom were new members of USCF. Top prizes were won by Kenneth Yamamoto, of Berkeley, (A), Raymond Cuneo, of Piedmont, (B), James Cornwell, of Petaluma, (C), and Jeffrey Pugh, of Concord, (Junior).

Leon Wait won the Concord Chess Club's Concord Chess Championships with a perfect score of 6-0.

The Concord Chess Club elected the following new club officers: Jerome Long, President,; Paul Westerline, Secretary-Treasurer; Dennis Reich, Rating Statistician; William Clipson, T. D.; Stan Ewy, Youth Dir.

PUBLICATION DATA

Editors
 Central California
 Chess Association
 c/o Post Office Box 1622
 Oakland, California 94604
 Telephone: (415) 636-1892

Scaccic Voice is edited and published monthly by Martin Morrison and Elwin Meyers, Editors, CCCA, in accordance with Article IV, Section iv (f) of the Bylaws of the CCCA, which directs the Editors "to edit and publish the official organ of the CCCA and all business proceedings of the CCCA, to provide a system of communication among the members and affiliates of the CCCA." Scaccic Voice is published in lengthier issues, photo-offset, in February, April, June, August, October, and December; in briefer issues, mimeographed, in January, March, May, July, September, and November (for tournament data and business proceedings of the CCCA only). Every member of the CCCA, i.e., every member of a chess club or organization affiliated to the CCCA, automatically receives Scaccic Voice mailed to his home gratis.

SUBSCRIPTIONS FOR MEMBERS: \$2.00 per annum.

BACK NUMBERS: 25 cents.

ADVERTISEMENTS: \$3.75 per eighth page per issue. \$18.75 per insert per issue. (This is one cent cheaper per piece for mailing tournament circulars, etc., than postage costs alone.)

The opinions expressed in the editorials and by columnists are those of Scaccic Voice's editors or those of individual columnists. They do not necessarily constitute an official policy of the CCCA or any of its affiliates.

Submission of material (including photographs) by readers is encouraged and becomes the property of the editors. Each CCCA affiliate is responsible for sending its own news material to the editors. To be assured of consideration for publication, news and tournament data should be received at the above address by the first of the month preceding the month of issuance. Other material (to be included only in the lengthier issues of Scaccic Voice) should be received at the above address by the first of the month, two months preceding the month of issuance. Material should be typewritten, following the style used in this magazine.

Comments from readers on any feature of this newspaper will be appreciated. Letters for publication in the "Letters to the Editors" column should be marked "For Publication." Correspondence to the editors should be sent to the above address; that to any other member of the staff, to that member, in care of the editors.

Material published in this magazine may be used by other publications if credit is given to Scaccic Voice (including its address) and if the editors are sent a copy of the issue containing the material.

CCCA OFFICERS

CHAIRMAN		JEROME LONG
2159 Mount Diablo Street, Concord	94520	682-3497
SECRETARY		SALEH MUJAHED
5 Abbey Court, Walnut Creek	94529	935-2489
TREASURER		LEONARD TROTIER
5315 MacDonald Avenue, El Cerrito	94530	233-1595
LEAGUE DIRECTOR		WILLIAM CLIPSON
1443 Cape Cod Way, Concord	94521	685-8865
RATING ADMINISTRATOR		DENNIS REICH
3457 Euclid Avenue, Concord	94520	682-3240
EDITORS		MARTIN MORRISON
c/o Post Office Box 1622, Oakland	94604	636-1892
		ELWIN MEYERS
c/o Post Office Box 1622, Oakland	94604	unlisted
PUBLICITY DIRECTORS		
(At-large)		ELLIS PLASTRIK
1111 Ferry Street, Martinez	94553	228-1796

(North Bay Area)
 27858 Tampa Avenue, Hayward 94544
 (South Bay Area)
 2500 Wallace Street, Apartment 2, Oakland 94606

RICHARD SHORMAN
 782-5029
 RICHARD LEE
 261-2058

CCCA AFFILIATES

ALAMEDA CHESS CLUB Mondays, 7:00 p.m.
 McKinley Park, Walnut St. and Buena Vista Ave., Alameda unlisted
 Mailing Address: c/o Raymond Live, Pres., 475 Buena Vista Ave. 523-9397
 Apt. 111, Alameda 94501

BERKELEY YMCA CHESS CLUB Wednesdays, 7:00 p.m.
 Palm Rm., Berkeley Central YMCA, 2001 Allston Wy., Berkeley 94704
 848-6800

COLLEGE OF THE SEQUOIAS CHESS CLUB Tuesdays, 12 m., September-June
 Rm. 338, College of the Sequoias, Visalia 93277 (209) 732-4711

CONCORD CHESS CLUB Fridays, 7:00 p.m.
 Concord Recreation Center, 2974 Salvio St., Concord 94520 687-2585

HAYWARD CHESS CLUB Mondays and Fridays, 8:00-11:00 p.m.
 Hayward Arts and Sciences Center, 2058 "D" St., Hayward unlisted
 Mailing Address: c/o Ernest Bartholomew, Pres., 26207 Coleman St.,
 #210, Hayward 94544 782-4000

LIVERMORE CHESS CLUB* First and third Friday nights
 Old Library, Carnegie Bldg., Fourth and "J" Sts., Livermore unlisted
 Mailing Address: c/o Harold Barnett, Sect., 677 Caliente Ave.,
 Livermore 94550 447-4588

MARTINEZ CHESS CLUB Mondays, 7:30 p.m.
 1111 Ferry St., Martinez 228-1796
 Mailing Address: c/o Rudy Quintero, Pres., 305 Christie Dr.,
 Martinez 94553 228-7332

MONTEREY PENINSULA CHESS CLUB Monday nights
 Monterey Youth Center, Camino El Estero and Pearl St., Monterey
 (408) 372-5497
 Mailing Address: P. O. Box 261, Monterey 93940

OAKLAND CHESS CLUB Fridays, 7:00-11:30 p.m.
 Multipurpose Rm., Lincoln Elem. School, 225 Eleventh St., Oakland 444-9831
 Mailing Address: P. O. Box 1622, Oakland 94604

ORINDA CHESS CLUB Thursdays, 7:30 p.m.
 Orinda Community Church, 10 Irwin Wy., Orinda Village, Orinda 254-4906
 Mailing Address: P. O. Box 504, Orinda 94563

RICHMOND CHESS CLUB Fridays, 7:00 p.m., except the first Thursday
 instead of the first Friday
 Our Lady of Mercy Church, 301 W. Richmond Ave., Point Richmond unlisted
 Mailing Address: c/o Leonard Trottier, Sect., 5315 MacDonald Ave.,
 El Cerrito 94530 233-1595

VISALIA CHESS CLUB Fridays, 7:30 p.m.
 Recreation Park Bldg., 345 No. Jacob St., Visalia 93277 (209) 732-1835

WALNUT CREEK CHESS CLUB Fridays, 7:00 p.m.
 Walnut Creek Park and Recreation Bldg., Civic Dr. and No. Broadway,
 Walnut Creek 935-3300
 Mailing Address: P. O. Box 391, Walnut Creek 94597

----- (paid advertizement) -----

AMERICA'S FINEST: WINSOR CASTLE CHESS SETS
 BREATH-TAKING BEAUTY AUTHENTIC DESIGN
 Finest grade plastic material Original Staunton design
 Beautifully polished Regulation club size
 Maple and black or maple and red 4"-high king
 STRONG AND DURABLE USED AT THE MANHATTAN AND MARSHALL
 Practically indestructible Chess Clubs for the past quarter
 Weighted or unweighted; felted century; approved by leading players
 LIMITED SUPPLY AT
 \$8 weighted \$5 unweighted
 IMMEDIATE DELIVERY from Leo Gladstone; Winsor Castle Chess Sets;
 124 West 30th Street, Room 314; New York, New York 10001.

*The Livermore Chess Club has not yet technically been affiliated to the CCCA. The question of its affiliation will be brought up at the adjourned meeting of the CCCA, to be held 16 August. The club has already paid a two months' assessment.

CHESS IS MY HOBBY
By JAMES REYNOLDS
Scaccic Voice Analysis Columnist

WHO WON THE GAME? Until I get around a little and until answers come from my plea for readers' games, again one of my own games is resorted to in this column. Let us see, though, whether you can figure out who won it, but if you know the answer from knowing the actual result (either from hearing of it or from being there), please, leave it up to those who never saw or heard of it. This game was played on Sunday, 5 February 1956, in the Chess Friends of Northern California Open California Championship for B players, in whose number I was at the time. That was the question! It was my very first appearance in a tournament as a B player, and I had promoted myself from class C. Even my best friends told me I was entering "above my head." I was not given a chance. My opponent, Dan McLeod (also a good friend, by the way), was one of the favorites to win the tournament.

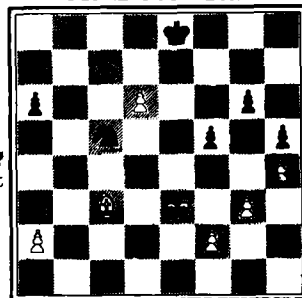
As it was, when this game came, Dan and I had each won three games and were the only two undefeated in the tournament. We met in round four with still one round to go. The game needs no remarks, as you can see by the moves we were really battling. Despite the round to go, this one really decided the championship.

White: Dan McLeod	Nimzo-Indian Defense		Black: James Reynolds		
1 P-Q4	N-KB3	9 O-O	P-QN3	17 N-Q4	N-B5
2 P-QB4	P-K3	10 P-Q5	PxP	18 B-B5	BxB
3 N-QB3	B-N5	11 PxP	N-K2	19 NxB	N-N3
4 N-B3	P-B4	12 P-B4	N-N3	20 Q-K2	K-B1
5 P-K3	N-B3	13 B-N2	R-K1	21 Q-B3	R-B1
6 B-Q3	PxP	14 Q-B2	P-Q3	22 NxQP!	. . .
7 PxP	BxNch	15 KR-K1	RxR		
8 PxB	O-O	16 RxR	B-Q2		
It is immune, of course.					
22 . . .	R-B2	25 Q-K4	R-B1	28 Q-K4	R-K1!
23 BxN	QxN	26 Q-Q4	P-B3		
24 B-N2	Q-Q2	27 P-KR4	P-KR4		
Like, "I dare you!"					
29 B-R3ch	K-B2	33 P-Q5	PxP	37 K-K2	P-B4
30 QxRch	QxQ	34 BxP	P-R3	38 K-Q3	K-Q1
31 RxQ	KxR	35 K-B1	P-N3	39 K-K3	K-K2
32 P-N3	N-K4	36 B-Q4	N-Q2	40 B-B3	K-K1

41 P-Q6 N-B4

At this point time was called because of the limited time allowed for the tournament. Both Dan McLeod and I had barely made our time limit on the moves. The game had to be adjudicated. So, WHO WON THE GAME? Can White's passed pawn do the job? Which remaining pieces are in better position: White's bishop or Black's knight? It is a close game and a championship is at stake. You are the adjudicator--WHO WON THE GAME?

(N. B. I shall gladly accept games from all classifications for comment. Do not be bashful, no matter what class you are. You may have a peculiar game of interest, or an old-fashioned "odd-ball" game, or perhaps even a brilliancy you cannot see! Send them to me for fun and general comment, as explained in the section "Publication Data" in this issue.)



GAMES COLUMN
By DAVID GLANVILLE
Scaccic Voice Games Columnist

GAME NO. 1: was played in the third round of the Golden Bear

LETTERS TO THE EDITORS

[With the following letter Scaccic Voice is continuing its long-standing and deeply felt policy of serving as a sounding board for chess players to discuss matters of importance in regional chess. In the last issue of Scaccic Voice we carried a letter by Mr. Jerome Long, President of the Berkeley YMCA Chess Club and Chairman of the CCCA, regarding what he felt was the underhanded way in which the Chess Friends of Northern California set up a tournament to conflict with a previously scheduled tournament and forced the Oakland Chess Club to accept the responsibility for it. Mr. Raymond Ng, Tournament Director of the Oakland Chess Club, in answer to that letter, sent the following letter to Mr. Long and asked that it be published in Scaccic Voice as well. This is not the first letter we have printed justifying CFNC and it shall not be the last. In the precursor to Scaccic Voice, En Passant, we published in its entirety a three-page letter from Earl Phillips, Editor of CFNC, which attempted to justify CFNC's organizational structure; however, he has never returned the gesture by publishing or reprinting any of the rebuttals we have authored in his magazine, CFNC's official organ, Chess in Action. Nevertheless, we pledge to persevere in seeing to it that Scaccic Voice, at least, serve as an easily accessible forum for all sides of such important questions for all chess players in this area. Accordingly, we here-with gladly publish Mr. Ng's letter in its entirety.--EDS.]

MR. LONG:

Your recent letter, published in the July issue of Scaccic Voice, contains a great deal of absurd charges. I wish to correct some of your statements.

First, Mr. Richard Lee did not suggest to CFNC that the Oakland Chess Club was "entitled to some financial consideration." He only suggested the possibility that the club cosponsor the scheduled tournament.

Second, I did not make a separate deal with CFNC to direct the tournament. I was appointed by the Oakland Chess Club's Board of Directors to direct the club-sponsored tournament, as I have done in the past. It was with the understanding that I was the regular tournament director of club-sponsored tournaments, that the CFNC representatives at Richard Lee's request contacted me.

I did not, as claimed, dictate the prize list or force the club to cosponsor the tournament. Nor were we forced to accept CFNC's terms. It is not possible in this club, for one person to dictate terms to other members of the club. Each member of the board made up his own mind and voted accordingly. I would also add that no Board member voted against the cosponsorship of the tournament.

CFNC did not arrange the entire tournament and did not force the club to run it by itself. As cosponsors of the tournament, CFNC and the Oakland Chess Club shared in all of the work. The club still handled its own publicity, the pre-registration, final rental of the tournament rooms, etc. Also, please note that the two assistant tournament directors were CFNC representatives.

Your information is obviously second-hand, at best, since you are not a member of this club and have never attended any of our board meetings. I suggest that you report the facts more accurately and/or find more reliable sources.

RAYMOND NG
Tournament Director, Oakland
Chess Club

*

[We have also received a reply to Mr. Ng's letter from Mr. Long, which also we are pleased to publish in full herewith.--EDS.]

*

DEAR MR. NG:

Perhaps rightly did you object on a number of points to my letter, since I carefully avoided mentioning specific names and incidents in order not to embarrass certain chess officials for whom I have maintained a continually high regard; however, since you yourself have publicly identified the persons involved and evidently wish to pursue the matter in specifics, I shall be happy to answer your charges point by point, wherever possible citing clear and demonstrable evidence,

which any interested chess player may verify for himself.

As to your first point, Mr. Lee stated in front of four witnesses (myself, Saleh Mujahed, of the Walnut Creek Chess Club, Elwin Meyers and Martin Morrison, of the Oakland Chess Club, and Leonard Trottier, of the Richmond Chess Club) at the first meeting of the Officers' Committee of the CCCA, held on 26 April at the Concord Recreation Center, that he contacted Mr. Charles McGinley, Jr., of CFNC, regarding the tournament only in order that the Oakland Chess Club might profit financially from the tournament, which was being held by CFNC in Oakland at the Oakland Chess Club's accustomed tournament site.

Regarding your second point, you have your dates confused, Mr. Ng. You were legally appointed director of the tournament at the Oakland Chess Club only on 10 May at a special meeting of that club's Board of Directors--merely six weeks before the date of the tournament itself. Until that time you had no authority to negotiate with CFNC in the name of the Oakland Chess Club, either implicitly or explicitly. Or perhaps you were in fact "making a separate deal with CFNC to direct the tournament," when on the weekend of 27-28 April, two weeks before the Oakland Chess Club's Board meeting, you went down to Sunnyvale and there talked with CFNC officials regarding their tournament in Oakland. Do you deny you were at Sunnyvale, Mr. Ng? I should hope not, for you would be convicted by CFNC's own official organ, Chess in Action, in the summer issue of which, on page six, you are listed as having finished ninth out of twenty in the CFNC "A" Division of the 1968 Peninsula Open Chess Championship Tournament, held at Sunnyvale on the weekend of 27-28 April. But, you may say, "I was there, but you have no proof I negotiated separately with CFNC." You would be right, of course; I can not prove it per se, but how else do you explain the fact that tournament circulars listing you as tournament director of that Oakland tournament were distributed after that Sunnyvale tournament, but before, yes before, you had been appointed tournament director by the Oakland Chess Club's Board. You can easily check the back files of the San Francisco Chronicle and see that you were listed as tournament director in Mr. George Koltanowski's chess column before, yes once again before, the Oakland Chess Club's Board had appointed you tournament director. Check those back files, Mr. Ng; there you will find incontrovertable proof.

You claim that you did not dictate the prize list to the Oakland Chess Club's Board of Directors, but surely you do not deny that the prize list had been drawn up in advance of the Board meeting without any consultation whatever with the Board previously. I mean the Board, Mr. Ng--not you as self-appointed negotiator, nor any so-called "majority agreement" of three out of five Board members, arrived at in three separate conversations with three different sets of facts presented by you in each conversation. You know as well as I do that such agreements, reached outside of official meetings are invalid and can not bind the Board as a whole, let alone the entire Oakland Chess Club. Were you afraid to call a meeting, at which all five Board members were present and discuss with them all at one time the situation before it was de facto too late to change the prize list and the tournament directors, before the tournament circulars were sent out, before Mr. Koltanowski published the prize list in the Chronicle? In fact it was not you at all who eventually called the special meeting of the Oakland Chess Club's Board on 10 May; rather, it was Mr. Morrison, who hoped to preserve some semblance of order and some saving of face for the Oakland Chess Club. Would you yourself, Mr. Ng, have called a meeting if he had not?

No, technically the Board was not "forced to accept CFNC's terms" (that is indeed interesting; were they really CFNC's terms?); rather, they could accept CFNC's terms and share the profits from the tournament, or they could "go fly a kite." Do you really think that CFNC cared that much whether the Oakland Chess Club cosponsored their tournament? Do you really think they would have allowed the club to cosponsor their tournament if Mr. Lee had not contacted Mr. McGinley? They had arranged the tournament before your Board meeting, before your talk with them, even before Mr. Lee first called Mr. McGinley. It might interest you to know that Mr. Roy McCollough, a CFNC officer,

declared to me in front of several witnesses at the Concord Chess Club, long before your Board meeting at Oakland, that he himself suggested that the tournament be held at the Oakland YMCA, that he himself proposed that the tournament be held on the same date as a previously scheduled USCF tournament to be held at the Berkeley YMCA.

You also state in your letter that no Oakland Chess Club Board member voted against cosponsoring the tournament. Did not Mr. Meyers publicly state that he did not approve of the conflicting tournament; did not Mr. Morrison? In fact, Mr. Morrison says the Board gave him permission to cast his vote for the record after the Board meeting and that he then voted no. Even Mr. Theodore Anderson, your president, cryptically remarked in front of several witness at the recent Regional Open Chess Tournament at Berkeley that "the Oakland Chess Club would learn from its mistakes."

I think I have pretty clearly proved that CFNC de facto arranged the entire tournament. Now you say that the Oakland Chess Club was not forced "to run [the entire tournament] by itself." I must admit you have convinced me of that fact. I am now inclined to think that CFNC ran the entire tournament and simply stole the name of the Oakland Chess Club for it. Mr. McGinley made the room reservation, Mrs. McGinley did 80% of the registration, no tournament in which the Oakland Chess Club was involved has ever got so much play in Chess in Action and Mr. Koltanowski's chess column--three full pages in Chess in Action and at least two mentions per week for two months in the San Francisco Chronicle. Do you know how much play the Hayward Chess Festival got--that festival which gives a \$100 scholarship to a deserving chess player? One line (or was it none at all?).

You say I get my information second-hand. I believe I have shown you that it is primarily first-hand, based on printed records and personal conversations with the principals in front of witnesses.

In closing, Mr. Ng, let me say that I do not want to be unfriendly toward you; in fact, I highly regard your chess-playing abilities and tournament-directing skill. Rather, I pity you, for you were "duped" by CFNC, just as, I freely admit, I too was "duped" in the beginning of my relations with CFNC. I gradually realized, as I am sure that you too will soon realize, of what stuff CFNC is made. I glimpsed the marrow of CFNC when I, along with several other CFNC officers, was treated to an expensive dinner at an exclusive restaurant on the CFNC members! Yes, almost twenty CFNC members' dues for that year were literally "eaten up" in three hours.

I have learned, Mr. Ng, and I am sure that intelligent as you are, you too will soon learn. My sincerest good wishes to you.

JEROME LONG

President, Berkeley YMCA Chess Club,
Chairman, CCA

BOOK NOTE

By MARTIN MORRISON
Scaccic Voice Editor

SUPER GRANDMASTER CHESS TOURNAMENT: ST. PETERSBURG, RUSSIA 1895/96.

James Schroeder, editor and publisher. Privately published, March 1968. Pp. 24; index of openings. Price \$2.00. Order from James Schroeder, P. O. Box 5268, Cleveland, Ohio 44101.

This book is another in Mr. Schroeder's series of tournament books of the world's great chess tournaments. Four historically-famed grandmasters participated in this one: Emanuel Lasker, Wilhelm Steinitz, Harry Pillsbury, and Michael Tchigorin. Each game played is included, along with diagrams of crucial positions and commentary--36 in all. Three crosstables for ready reference are included: of individual game results, round-by-round results, and final standings. The booklet is aptly concluded with an index of openings. Mr. Schroeder is to be congratulated on his constant efforts in publishing booklets of this kind, the contents of which are unavailable elsewhere at such a low price. The booklet is handsomely covered and will be a worthwhile addition to every chess player's library.

USCF-CCCA RATINGS

The following list of ratings is the result of a motion introduced by Mr. Everett McNally at the 12 July meeting of the CCCA. The purpose of this rating list is to give every CCCA member a current rating for use in USCF-CCCA tournaments. Ratings are computed on the USCF standard that sixteen points, plus or minus 4 per centum of the difference in rating points between the opponent, are at stake in each game. Official USCF ratings will be adjusted in the interim between the quarterly publication of official USCF ratings in Chess Life, but these adjusted ratings will be reconciled to the official USCF listing each time it is published; thus, official USCF ratings are the backbone of this rating system, which is therefore called the USCF-CCCA rating system. All CCCA members' ratings will be adjusted in this system on the basis of their performance in USCF-CCCA tournaments. Players who have official USCF ratings will be given those ratings, which will be adjusted and reconciled as explained above. Nonmembers of USCF will be given an initial rating on the basis of whatever other ratings are available for them. As they play in USCF-CCCA tournaments, their ratings too will be adjusted.

It is hoped that in the future all CCCA members will become members of USCF, so that such a rating system as this will be unnecessary or so that everyone's USCF rating will need only minor adjustment in the interim between the quarterly publication of official USCF ratings in Chess Life.

For this first listing ratings were assigned using the first of the following systems in which a CCCA member had a rating:

- (1) USCF: no mark after the rating indicates an established rating; * indicates a provisional rating based on ten to twenty-four games (such ratings are less reliable than established ratings); # indicates a rating based on four to nine games (such ratings are highly unreliable).
- (2) CFNC: indicated by %.
- (3) Club: indicated by &.

Some of these ratings have already been adjusted on the basis of the CCCA's Regional Open Chess Tournament at Berkeley. Such adjusted ratings are indicated by \$. Ratings will be published bimonthly.

Expert	2000 to 2199	Class C ..	1400 to 1599
Class A	1800 to 1999	Class D ..	1200 to 1399
Class B	1600 to 1799	Class E ..	1199 and below
Alaimo, B. (M)	1534% Castellano, W.	(O)	1986
Alexander, C. (O)	1750& (H)	1626&	Fosaaen, J. (C) 1963
Anderson, L. (C)	1603% Chew, W. (O)	-----	Fotias, C. (S, V) 1655
Anderson, T. (O)	1419# Clapp, D. (C)	1795%	Frandy, M. (H) 1631&
Arnstein, P. (R)	1450% Claudio, D. (R)	1669%	Freeman, D. (A) 1632%
Ausmus, R. (H)	1747& Clipson, R. (C)	1657%	Friedman, J. (H,
Barnett, H. (L)	1060% Clipson, W. (C)	1384	0) 1658#
Bartholomew, E.	Collins, J. (C)	-----	Fung, D. (O) 1550
(H)	1586* Cook, F. (O)	1814%	Garnett, T. (C) 1529%
Bass, S. (W)	1420% Crossland, E. (O)	1462#	Gerhardt, J. (A,
Bauer, F. (O)	1500% Cuneo, R. (O)	1801\$	G) 1597%
Belcher, J. (A)	1562% DeGroot, M. (N)	1641%	Gerrand, J. (O) 1600%
Bentson, R. (H)	1613# Demasceno, S. (M)	1492%	Geymer, D. (N) 1677%
Betts, W. (M)	1551& Dennis, J. (O)	1648%	Glanville, D. (O) 1674#
Bigelow, G. (W)	1613% DeRosa, J. (C)	1521%	Goss, D. (C) 1513%
Borrego, C. (M)	1519& Dobin, L. (O)	-----	Greenwald, J. (M) 1691%
Britton, E. (O)	1485% Dorfman, J. (O)	1210#	Guzman, R. (C) 1395#
Brown, Jr., P.	Earl, W. (C)	1524%	Hale, J. (O) 1778#
(R)	1696% Ehmann, C. (H)	1674%	Hale, R. (O) 1633#
Burton, R. (R)	----- Eliason, J. (C)	1621%	Hall, A. (O) 1565*
Bush, J. (C)	1404\$ Elyson, E. (C)	1535%	Haller, O. (C) 1469
Campbell, D. (N)	1668\$ Evenson, M. (C)	1548&	Hansen, R. (O) 1788
Canciamilla, M.	Ewy, Sioux (C)	1550&	Harris, T. (C) 1550&
(M)	1506& Ewy, Stan (C)	1619%	Hayes, G. (C) 935#
Canfield, E. (H)	----- Fleuriot, R. (N)	1649%	Henderson, D. (C) 1507%
Carlson, P. (C)	1532& Forthoffer, D.		Henderson, J. (C) 1454&

Henderson, M. (C)	1563%	Morris, N. (C)	1511%	Schulman, S. (O)	-----
Hibbler, F. (O)	1643%	Morrison, M. (O)	1598%	Schwab, C. (R)	-----
Hirstio, V. (C)	-----	Notquin, S. (C)	1552%	Schwartz, E. (O)	-----
Hough, R. (O)	1825	Mujahed, S. (W)	1737%	Shearer, J. (L)	1620\$
Hutchinson, J. (H)	-----	Nace, R. (M)	1684%	Sherman, D. (M)	-----
Jacob, R. (W)	1585%	Nelson, S. (A)	1683%	Shorman, R. (H)	2012%
Jaramillo, J. (C)	1560%	Ng, R. (O)	1990*	Sletner, A. (O)	1621%
Jemison, W. (R)	-----	Norberg, T. (A)	-----	Sloane, M. (O)	1516#
Joshi, P. (R)	-----	Nordell, L. (O)	1621%	Smith, A. (R)	-----
Kilker, S. (W)	1662%	Norman, N. (R)	-----	Smith, E. (O)	1550%
Kitabayashi, S. (M)	1656%	Olander, L. (W)	1763%	Sobol, O. (A)	1711%
Klinkenburg, D. (A)	1759%	Olvera, Jr., F. (C)	1603%	Stevens, Jack (C)	1551%
Kuehl, L. (C)	1550%	Olvera, Sr., F. (C)	1602	Stevens, John (C)	1550%
Lamasney, P. (O)	1805%	Orr, G. (A)	1644%	Stocksdale, K. (O)	1641%
Lambert, W. (N)	1693%	Osternig, L. (H, O)	1667%	Sutton, L. (A)	-----
Lane, L. (O)	1348%	Oyler, M. (C)	1524%	Switzer, Sr., W. (N)	-----
Lanouette, R. (C)	1573*	Oyler, R. (C)	1705	Tobacco, L. (C)	-----
Lawless, K. (H)	-----	Parker, W. (O)	1661%	Tobacco, T. (C)	1536%
Lawry, D. (C)	1452%	Petersen, D. (M)	1512	Tabler, C. (O)	-----
Lechtaler, C. (N)	1481%	Petersen, J. (M)	1510%	Thompson, D. (C)	1739
Lee, R. (O)	1688%	Pico, R. A. (C)	1550%	Thompson, F. (R)	1440%
Lim, R. (C)	1591%	Pico, R. C. (C)	1550%	Thompson, L. (H)	1689%
Long, J. (C)	1798%	Plastrik, E. (M)	-----	Tresz, S. (O)	1837\$
Long, T. (C)	1518%	Pugh, J. (C)	1559%	Trottler, L. (R)	1585\$
Louie, D. (O)	1684%	Quintero, R. (M)	1733%	Turner, L. (C)	1697%
Love, R. (A)	1511%	Ramirez, A. (O)	1646*	Twigg, D. (N)	1650%
McClain, S. (C)	1550%	Rapoport, D. (O)	1995\$	Ulrich, F. (O)	1606\$
McCollough, C. (C)	1819	Reed, T. (M)	1631%	Underwood, K. (C)	1498%
McNally, E. (H)	1797\$	Reich, D. (C)	1611%	Vadnais, L. (H)	1644%
McNow, M. (W)	1628\$	Rivera, Jr., M. (C)	-----	Vail, C. (W)	1660*
McQuarry, M. (N)	-----	Rocklin, R. (C)	1514%	Virden, J. (C)	1550%
Marchand, S. (R)	-----	Ross, C. (C)	1538%	Waddell, E. (R)	-----
Marski, W. (O)	-----	Ross, T. (C)	1550%	Wait, D. (C)	1560%
Merriman, C. (C)	1504%	Roust, G. (L)	1693%	Wait, L. (C)	1609\$
Merriman, G. (C)	1504%	Rubtsamen, E. (O)	1522%	Weber, B. (O)	1797\$
Meyers, E. (O)	1848%	Salna, J. (O)	1871	Weber, M. (O)	1875%
Mitchell, D. (C, O)	1636	Salo, E. (H)	1605%	Weiler, J. (W)	1520
Mitchell, R. (O)	1851	Sargent, R. (C)	1504%	Weitzner, M. (M)	1533%
		Schiffer, D. (C)	1520%	Wells, A. (C)	1550%
				Werner, E. (M)	-----
				West, S. (C)	1531%
				Westcott, A. (N)	1650%
				Westerline, P. (C)	1658\$
				Wheeler, J. (H)	1568%
				Whitt, G. (N)	1679%
				Williams, R. (H)	-----
				Wong, H. (O)	-----

Club symbols used in parentheses after name:

A Alameda	L Livermore	R Richmond
B Berkeley YMCA	M Martinez	V Visalia
S College of the Sequoias	Y Monterey Peninsula	W Walnut Creek
C Concord	O Oakland	
H Hayward	N Orinda	

CLASSIFIED ADVERTIZEMENTS

(Rate: 7 1/2 cents per word per issue on any subject)

FOUND--Two knights from new sets at the 1968 CFNC Summer Chess Championship Tournament; one plastic, one wooden, both felted and weighted. King size probably 3 3/4 inches; Staunton design. Contact Jack Dennis, 233 1401 (Richmond).

EDITORIAL THANKS

The editors wish to express their deepest thanks to the following persons, without whom this photo-offset issue could not have been prepared: Robert Lauzon, Editor, Nostalgia (chess diagrams), Theodore Anderson (technical help), Ed Kirwin (layout), William Addison, Paul Westerline, Richard Lee, Jerome Long (moral support), the address-label type, who wishes to remain anonymous, The Walnut Creek, Concord, Oakland, and Martinez Chess Club, the advertizers, and the many readers who have expressed their good wishes for our venture and for lack of space, must go unnamed. Our thanks to you all.

turns simple developing moves into forceful continuations that give Black no pause.

18 . . . K-B1 20 Q-R6 K-K1 21 QxBP resigns
 19 RxR PxR

Double attack, Reuben Fine once noted, is the essence of combination. Here both rook and mate hang. White conceived a game as fresh and bubbly as sparkling Rhine wine.

*

GAME NO. 2: was played in the fourth round of the Oakland Chess Club's Fourth Annual Summer Tournament (23 July 1967). A fierce positional battle takes place, in which Black fails to play ...P-B3 to complete the common Boleslavsky Wall formation of the King's Indian, so White obtains a substantial positional superiority by occupying Q5. Black in severe time trouble, misses a couple of chances to complicate matters by keeping rooks on the board, and White achieves a won king and pawn ending.

White: Randall Hough Black: Van Fong

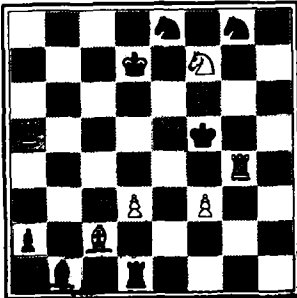
		King's Indian Defense			
1 P-Q4	N-KB3	16 BxN	B-K3	31 R-B6	Q-R2
2 N-KB3	P-KN3	17 N-Q5	NxN	32 K-N2	P-R5
3 P-B4	B-N2	18 BxB	KxB	33 P-QN4	R-N3
4 P-KN3	P-Q3	19 BPxN	B-Q2	34 R/1-QB1	RxR
5 B-N2	O-O	20 QR-B1	P-KB3	35 RxR	Q-N2
6 N-B3	QN-Q2	21 R-K3	Q-Q1	36 RxP	QxQ
7 O-O	P-K4	22 R/3-QB3	R-QB1	37 RxQ	RxR
8 P-K4	R-K1	23 Q-Q4	P-B4	38 PxR	K-B2
9 P-KR3	PxP	24 PxP e.p.	BxBP	39 K-B2	K-K2
10 NxP	N-B4	25 P-B3	Q-K2	40 K-K3	K-Q3
11 R-K1	P-QR4	26 B-B1	R-QR1	41 K-K4	P-B4ch
12 P-N3	N-K3	27 R-Q1	KR-Q1	42 K-Q4	P-R6
13 B-K3	B-Q2	28 B-B4	QR-N1	43 P-R4	P-R3
14 Q-Q2	Q-B1	29 B-Q5	BxB	44 P-N4	resigns
15 K-R2	NxN	30 QxB	P-QN4		

MATING MAZE

By RICHARD LEE

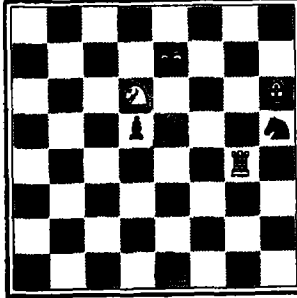
Scaccie Voice Problems Columnist

NO. 37



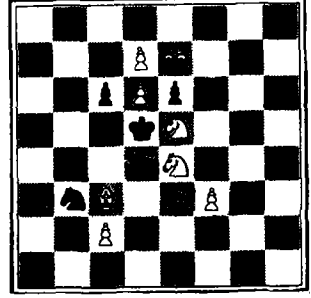
Mate in two.

NO. 38



Mate in two.

NO. 39



Mate in two.

*

SOLUTIONS TO PREVIOUS PROBLEMS: no. 34, B-N2; no. 35, N-Q3; no. 36, N-N7.

*

To those who like unusual and challenging chess problems: please read "Benko's Bafflers" appearing in Chess Life, the official magazine of the United States Chess Federation. The particular issue to look for is the February issue, in which international grandmaster Benko composed problems to form letters of the alphabet. He also initiated an unprecedented prize fund for a problem composing competition. The prize fund is \$500, entries to be mailed in by the end of the year. Please try to borrow a copy for rules, and enter your problem.

MINUTES OF THE CENTRAL CALIFORNIA CHESS ASSOCIATION

A regular meeting of the Central California Chess Association was held on Friday, 12 July 1968, in the Faculty Dining Room of Lincoln Elementary School, 225 Eleventh Street, Oakland (the Oakland Chess Club's quarters). The meeting was called to order at 8:20 p.m. by Martin Morrison, who served as chairman pro tempore in the absence of Jerome Long, CCCA Chairman.

The following members were present: Raymond Love (Alameda Chess Club); William L. Clipson, Michael Henderson, Leroy Turner, Paul Westerline (Concord Chess Club); Jerry Friedman, Luce Lopez, Everett McWalley, Louis Osternig, Richard Shorman (Hayward Chess Club); Donald H. Peterson, Ellis Plastrik, Rudy Quintero (Martinez Chess Club); Theodore E. Anderson, Richard Lee, Elwin C. Meyers, Martin E. Morrison, Raymond Ng (Oakland Chess Club); Leonard Trotter (Richmond Chess Club); Saleh Mujahed, Charles Vail (Walnut Creek Chess Club). The following visitors were present: Frank Harris, G. H. Rasmussen (Vallejo Chess Club).

By general consent it was adopted that all meetings of the CCCA be open to nonmembers, who shall have the same rights of debate as members.

It was moved by Mr. Meyers and adopted that the minutes of the last meeting be approved as published in the official organ.

It was moved by Mr. Meyers and adopted that the Hayward Chess Club be affiliated and that since it has been paying its assessments from the beginning of the CCCA, it be considered a charter affiliate.

It was adopted that the Visalia Chess Club and the College of the Sequoias Chess Club be affiliated.

The chairman read letters from the Bay Area Chess League, the Central California Chess League, two United States Chess Federation directors, and the San Quentin Chess Club, expressing their approval of the CCCA and wishing it success.

It was moved by Mr. Clipson and adopted that the Secretary write the Monterey Peninsula Chess Club regarding its non-payment of assessments and report back at the next meeting.

It was moved by Mr. Vail and adopted that the Secretary write the San Rafael and Mill Valley Chess Club regarding affiliation.

It was adopted that the Bay Area Chess Nuts Association be recognized as defunct and no longer an affiliate.

The following report was given by the Treasurer:
REPORT OF THE TREASURER OF THE CCCA
FOR THE PERIOD THROUGH 12 JULY 1968

Receipts.

Four months' assessments from nine affiliates*	\$ 90.00
Advertizing income for the organ to 14 June..	25.20
	<u>\$115.20</u>

Disbursements.

CCCA expenses (paper)	\$95.04
Bank service charges (two months)	1.71
Donation to Master Frank Thornally's trip to the US Open	5.00
Balance on hand 12 July 1968	13.45
Total	\$115.20

* Berkeley YMCA Chess Club (?); Alameda Chess Club (11), Concord Chess Club (68), Hayward Chess Club (17), Martinez Chess Club (16), Oakland Chess Club (50), Orinda Chess Club (12), Richmond Chess Club (13), Walnut Creek Chess Club (9). Total: 1967 members.

It was moved by Mr. Meyers that the report be adopted, including the emergency expenditure of \$5 for Master Frank Thornally's (Mechanics' Institute Chess Club) trip to the US Open.

The chairman, speaking as one of the CCCA editors, reported \$108.50 receipts from advertizing in the organ.

The following resolutions, recommended by the ad hoc Officers' Committee, were discussed and voted upon separately:

(I) That the Bylaws of the CCCA be amended as follows:

(A) Article VI, Section iv: by inserting after "at meetings of the CCCA," "each member shall have one vote. Any member, however, may order a vote by affiliates, which shall be final. In a vote by

affiliates . . ." Adopted.

(B) Article IV: by adding "The CCCA; by a two-thirds vote, may exempt an affiliate temporarily or permanently from paying part or all of its assessment." It was moved by Mr. Dennis and adopted to amend by striking out "or permanently." The amendment, as amended, was adopted.

(C) Article VI, Section ii: by striking out "majority" and inserting "25%." It was moved by Mr. Meyers and adopted to amend by adding "or one representative from four of the affiliates, which ever is greater." The amendment, as amended, was adopted.

(D) Article II, Section ii: by inserting after "club," "or organization." Adopted.

(E) By adding after Article VI another article "Executive Board. Section i. The officers of the CCCA shall constitute the Executive Board. Section ii. The Executive Board shall have general supervision of the affairs of the CCCA between meetings of the CCCA. It is subject to the orders of the CCCA, and none of its acts shall conflict with actions taken by the CCCA. Section iii. The officers of the CCCA shall ex officio be the officers of the Executive Board. Section iv. Meetings of the Executive Board may be called by its chairman and shall be called upon the request of one-third of the members of the Executive Board." It was moved by Mr. McNalley to amend by adding after section ii "The Executive Board is subordinate in any decision to the CCCA." The amendment, as amended, was adopted.

(F) Article VI, Section ii: by striking out "of the CCCA . . . to him" and inserting "or the Executive Board of the CCCA and shall be called upon the request of 5% of the members of the CCCA." Adopted.

By general consent Mr. Meyers was allowed to move at this time the adoption of the following amendment to the Bylaws, which failed: to strike out from Article VI, Section i "April, July, and October" and to insert "March, May, July, September, and November."

(II) (A) That Paul D. Shannon, Publicity Director for the West Bay Area, since his move to the East renders the performance of his duties impracticable, is virtually the abandonment of his office, and is equivalent to a resignation, be considered resigned and his office vacant." Adopted.

(B) That there be an office of Publicity Director for the North Bay Area and a Publicity Director for the South Bay Area, instead of the present areas. It was moved by Mr. Plastrik to amend by substituting "That there be as many Publicity Directors as there are counties represented by an affiliate in the CCCA, and that all county Publicity Directors be considered officers." It was moved by Mr. Quintero and adopted that the motion be tabled (with the amendment).

(C) That Richard Lee, present Publicity Director for the East Bay Area become Publicity Director for the South Bay Area, and that Jack Dennis or Charles Vail be elected to fill the vacancy for Publicity Director of the North Bay Area. It was moved by Mr. Clipson and adopted to amend by substituting "That at least temporarily Richard Lee become Publicity Director for the South Bay Area, and that a Publicity Director for the North Bay Area and a Publicity Director at large be elected." The substitute motion was adopted. It was also adopted that Mr. Shorman be elected Publicity Director for the South Bay Area, and Mr. Plastrik, at large.

(III) That auditors be chosen to audit the Treasurer's books. It was moved by Mr. McNalley and adopted that the motion be tabled.

Mr. Clipson, chairman of the ad hoc League Committee, reported for the committee and moved the adoption of the following resolution: That the team captains, under the chairmanship and at the call of the League Director, make the rules for the CCCA League, and that the League Director have the final say in the administration of the rules. Adopted.

Mr. Clipson reported for the Officers' Committee Subcommittee on Incorporation, which was directed to report directly to the CCCA. It was adopted that the subject be referred to the Executive Board, which should report back at the next CCCA meeting.

New business:

It was moved by Mr. Clipson that there be one League with two sections. It was moved by Mr. Love and adopted to amend by striking out "with two sections" and inserting "the composition of which shall

be determined at the team captain's meeting." The motion, as amended, was adopted.

It was moved by Mr. McNalley and adopted that any club or organization which fields a team for the League shall be affiliated with the CCCA before the first match, and that clubs or organizations which would have difficulty paying assessments because of this rule shall be granted leniency under Article IV of the CCCA Bylaws.

It was moved by Mr. McNalley that the CCCA set up an interclub rating system, based on USCF ratings, standardized and corrected to them at quarterly intervals, whereby those players with USCF ratings would be given those ratings and those without USCF ratings would be assigned ratings by the Rating Administrator on the basis of whatever information he had available, and that such provisional ratings would be so indicated, and that ratings would be corrected by the Rating Administrator between quarters on the basis of games played between CCCA members. It was moved by Mr. Westerline and adopted to amend by adding "and that the Executive Board take charge of the question." The motion, as amended, was adopted.

It was moved by Mr. McNalley that the CCCA define the boundaries of the organization. It was moved by Mr. Quintero and adopted that the motion be tabled.

It was moved by Mr. Plastrik that he attend as a CCCA observer the meeting of the Board of Directors of the Boys' Club regarding the set-up of a youth league, and that he report back to the October meeting of the CCCA.

It was moved by Mr. Meyers and adopted that when the CCCA adjourned, it adjourn to 16 August 1968, 8:00 p.m., at the Oakland Chess Club.

It was moved by Mr. Westerline and adopted that the Editors be complimented on their work with the organ, that they be encouraged to improve the method of reproduction of the paper, and that if the Editors needed funds from the general treasury, the Treasurer be ordered to disburse reasonable amounts.

The League Director announced the team captains' meeting for 9 August, 8:00 p.m., at the Oakland Chess Club.

It was adopted to adjourn cum die (to 16 August, 8:00 p.m., at the Oakland Chess Club).

*

Copies of the Bylaws as amended 12 July are available from the Editors. Please send twenty cents and a self-addressed, stamped envelope.

"THEY HAVE GOOD PLAYERS . . . , BUT NOT GOOD ORGANIZATION"

By EVERETT MCNALLY
Hayward

This quote from M. Botvinnik will introduce some proposals of mine for the organization of chess in this area which will be introduced at the next [16 August] meeting of the CCCA.

Amendment to the Bylaws of the CCCA: add after Article I, Section 1 another section, "Central California shall be defined as those twenty-six counties of California between the northern boundaries of Sonoma, Napa, Yolo, Sacramento, and El Dorado counties, and the southern boundaries of Monterey, Fresno, and Mono counties."

Proposed organization of chess tournaments: Berkeley, Concord, Hayward, Oakland, etc., City Championships to be played off in a CCCA Invitational Chess Championship, which, together with the Alameda, Contra Costa, etc., County Chess Championships, would be played off for the California State Championship, thence to major national tournaments. Each tournament should have all classes of players.

Controlling purposes of the proposed rating of CCCA to supplement USCF [adopted at the 12 July CCCA meeting]: (1) to rate all CCCA members; (2) to divide players into classes for competition; (3) to give an accurate comparison of ability between players; (4) to promote, reward, and record progress; (5) to provide rating system comparable to USCF; (6) to keep higher rated players in their class; (7) to keep accurate record of all players who are or have been CCCA members. Method: evaluation by a combination of factors, (1) all ratings available (weighed heavily); (2) ability shown in games (won or lost); (3) personal desire and information of person to be rated (if received before rating given).

Editors
Central California
Chess Association
c/o Post Office Box 1622
Oakland, California 94604
Telephone: (415) 444-9831
THIRD-CLASS MAIL
ADDRESS CORRECTION
REQUESTED



David Forthoffer (r.), 1968 Oakland Chess Club Champion, plays club member Allen Marks (l.), at the Oakland Chess Club's booth at the Oakland Hobby Show (7-9 June). David Glanville (r.), Seacolic Voice Games Columnist, exchanges comment with Raymond Ng, club Tournament Director.

*
ADJOURNED CCCA MEETING: 16 August, 8:00 p.m., Oakland Chess Club, Lincoln Elementary School, 225 Eleventh Street, Oakland. Everyone welcome.
CCCA LEAGUE TEAM CAPTAINS' MEETING: 9 August, 8:00 p.m., Oakland Chess Club (same address as above). Team captains, prospective team captains, members are welcome.

ADDRESSEE: NOTIFY THE EDITORS AS SOON AS POSSIBLE OF ANY CHANGE IN YOUR ADDRESS OR TELEPHONE NUMBER.
USCF MEMBERSHIPS AT 20% DISCOUNT: Send \$8 or \$4 (under 21) regularly \$10 and \$5---for new USCF memberships or renewals, to the CCCA Treasurer, whose address will be found infra.
NEXT AFFILIATE ASSESSMENT DUE: 5 August; club officers responsible should send 20 cents per club member and all addresses to the CCCA Treasurer.
NEXT USCF-CCCA CHESS TOURNAMENT: CCCA's Regional Open Chess Tournament at Concord, Concord Rec. Cen., 10-11 August.