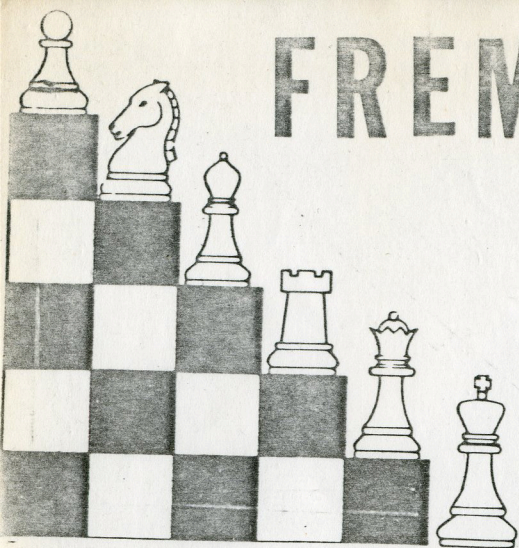


FREMONT CHESS CLUB

NEWSLETTER



FREMONT CHESS CLUB MEETS EVERY FRIDAY FROM 7 TO 11 PM. AT FREMONT COMMUNITY CHURCH (LEFT SIDE ENTRANCE), 39700 MISSION BLVD. NEAR STEVENSON.

MAILING ADDRESS: HANS POSCHMANN, 4621 SENECA PARK AVE. FREMONT, CALIFORNIA 94538
 EDITOR: DAN MCDANIEL JULY, 1982

KIDS GIVE NO RESPECT

Showing no respect for their elders, or the traditional values, Danny Miranda, Dan Brinkman and George Hahn scored stunning upsets in the first two rounds of the Fremont Chess Club Championships.

Victimized was Dan McDaniel and Paul Friedrich twice. Discussions were immediately held to see if the winning trio could be drafted by the Foreign Legion.

Ed Sheffield and Hans Poschmann lead after two rounds with two points apiece, followed closely by Brinkman with dos.

LAST MONTH'S PUZZLE SOLUTION

White: Pawns b2, b3, c2, d3, f2, g3 h3, Bg2, Bd6, Nc4, Ra1, Re4, Qf3, Kg1
 Black: Pawns a5, b7, c5, e6, f7, g6 h7, Ne7, Bc8, Bf6, Ra8, Rd8, Qb5, Kg7

19. Qf6, Kf6 20. Be5+ Kg5 (if Kf5 a mate in three by Rf4+ Kg5 22 Bf6+ Kh6 23 Rh4++) 21 Bg7 resigns. If 21 ...e5 22 h4+ Kh5 23 Bf3+ Bg4 24 Bg4++. Or 21 ...Nf5 22 f4+ Kg5 23 Ne5+ Kh5 24 Bf3++

games to laugh by

White: Paul Friedrich (1679)
 Black: Dan Brinkman (1265)

- | | | |
|----|-----|-----|
| 1) | e4 | e5 |
| 2) | Nf3 | Nc3 |
| 3) | d4 | ed |
| 4) | Nd4 | Nf6 |
| 5) | Nc6 | bc |
| 6) | Bd3 | Bc5 |
| 7) | O-O | O-O |
| 8) | Bg5 | Be7 |

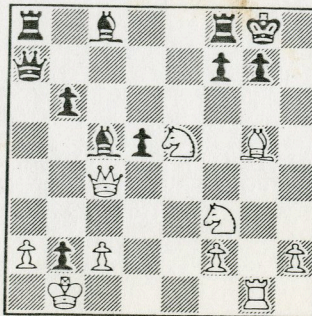
An unavoidable loss of tempo. H6 fails because of 9 e5 hg 10 ef Qf6 11 Nc6 and black has too many targets and is too far behind in development.

- | | | |
|-----|-----|-----|
| 9) | Nc3 | d5 |
| 10) | Bf4 | a5 |
| 11) | ed | cd |
| 12) | Nb5 | c6 |
| 13) | Nd4 | Qb6 |
| 14) | Nb3 | a4 |

White doesn't seem to know where he wants his pieces.

- | | | |
|-----|-----|---------------|
| 15) | Be3 | Qb7 |
| 16) | Nc5 | Qb2 (cont'd.) |

TRAPL vs PEREZ
 (Oberhausen, W. Germany 1961)



White to move and mate in five.

(Cont'd. from page 1)
Friedrich vs Brinkman

- | | | |
|-----|------|-----|
| 17) | Rb1 | Qa3 |
| 18) | Nb7 | Qa2 |
| 19) | Qd2 | Rb8 |
| 20) | Ba6? | Bb7 |

White has better chances if 20 Ra1
Qb2 21 Na5 and black loses the a or
c pawn because 21...Bb4 is refuted
by Rfb1!

- | | | |
|-----|-------|-----|
| 21) | Bb7 | Qc4 |
| 23) | Rb4?? | |

Indulging in the Oriental art of Hari
Kiri and resigning before black can
snatch everything in sight.

* * * * *

White: George Hahn (1536)
Black: Dan McDaniel (1590)

- | | | |
|----|-----|------|
| 1) | e4 | e6 |
| 2) | d4 | d5 |
| 3) | Nc3 | Bb4 |
| 4) | Bd2 | Ne7? |

Black should win a pawn by 4...Bc3
5 Bc3 de, then fight to hold his greed.

- | | | |
|----|-----|-----|
| 5) | Bd3 | c5 |
| 6) | a3 | cd |
| 7) | ab | dc |
| 8) | Bc3 | d4? |

A second mistake which loses a pawn
and the game. Black sees too late
that after 9 Bd4 the bishop is imm-
une because of 10 Bb5+, winning the
queen.

- | | | |
|-----|-----|------|
| 9) | Bd4 | O-0 |
| 10) | Bc3 | Nbc6 |
| 11) | Qg4 | e5 |
| 12) | Qg3 | Ng6 |
| 13) | Nf3 | Qc7 |

13...Re8 is better.

- | | | |
|-----|------|------|
| 14) | O-0 | f5 |
| 15) | b5 | f4 |
| 16) | Qg5 | Nd4 |
| 17) | Nd4 | ed |
| 18) | Qd5+ | Kh8 |
| 19) | Qd4 | Be6 |
| 20) | b6 | ab |
| 21) | Be2? | Rad8 |

Why not 21 Ra8 and keep the attack?

- | | | |
|-----|-----|------|
| 22) | Qb4 | f3!? |
| 23) | Bf3 | Rf3 |

And black begins to get counterchances

- | | | |
|-----|------|-----|
| 24) | gf | Qf7 |
| 25) | Bg7+ | Kg7 |
| 26) | Qc3+ | Kh6 |
| 27) | Qe3+ | Nf4 |
| 28) | Kh1 | Qc7 |

- | | | |
|-----|-----|-------|
| 29) | e5 | Rf8 |
| 30) | Ra4 | Qf7 |
| 31) | Rb4 | Kh4 |
| 32) | Rd1 | Nd5?! |

White finds the only correct reply
out of the many ways to go wrong.

- | | | |
|-----|--------|-----|
| 33) | Rh4+ | Kh4 |
| 34) | Qh6!!+ | Qh5 |
| 35) | Qf8 | Bf7 |
| 36) | Qe8+ | Kh3 |

Black gives white a last chance to
go wrong, hoping he'll take the rook,
in which case 37...Qf3+ gives black
his last gasp.

- | | | |
|-----|------|-----|
| 37) | Qe7+ | Kh5 |
| 38) | Rd4+ | Kg5 |
| 39) | Rg4+ | |

And black resigns.

* * * * *

Ed Sheffield finished with three
points in the A section at the
recent LERA tournament. Here are
two of his games.

White: James Stewart (1919)
Black: Ed Sheffield (1841)

- | | | |
|----|------|-----|
| 1) | Nf3 | Nf6 |
| 2) | d4 | d5 |
| 3) | Bg5 | e6 |
| 4) | e3 | Bd6 |
| 5) | Bd3 | h6 |
| 6) | Bh4 | Nc6 |
| 7) | c3 | Bd7 |
| 8) | Nbd2 | Qe7 |
| 9) | Qc2 | a6 |

Both sides are afraid to do anything

- | | | |
|-----|-----|-----|
| 10) | a3 | g5 |
| 11) | Bg3 | Bg3 |

Indulging in his favorite sport of
working against doubled pawns.

- | | | |
|-----|-------|-------|
| 12) | hg | O-O-O |
| 13) | O-O-O | Na7 |
| 14) | Ne5 | Bb5 |
| 15) | c4 | dc |
| 16) | Ndc4 | Ne7 |
| 17) | Ne7 | Be7 |
| 18) | Kb1 | Kb8 |
| 19) | Qb3 | Bb5 |
| 20) | Ne5 | Bd4+ |
| 21) | Rd4 | Re6 |

Trying to exchange everything in
sight and get to the endgame.

- | | | |
|-----|------|-----|
| 22) | Rc1 | Rb6 |
| 23) | Qa4 | Re8 |
| 24) | Rdc3 | Nb5 |

(Cont'd. next page)

(Cont'd. from page 2)
Stewart vs Sheffield

25) Rb3 f6
26) Nd3 Qd7
27) Nc5 Qd5
28) f3 Rdd6
29) Ne4 Rdc6

Desperately hoping to trade anything.

30) Rc6 Rc6
31) Nf6 Qf5+
32) Ne4 g4
33) Ka2 gf
34) gf Qf3
35) Nc5 Qg3
36) Qb4 Kc8
37) a4 Nd6
38) Ne6 Rb6

Black is holding on with his finger-nails despite his outside passed pawn.

39) Qc5 Rc6

If black captures the rook, then Qc7 mates.

40) Qa7 Kd7
41) d5! Rc4
42) Nc5+ Ke7
43) e4 Qf2
44) e5?

Whites natural looking move meets a suprising refutation.

44) Ra4+!!

White resigns as 45 Na4 loses the queen and 45 Ra3 Ra3+! 46 Ka3 Nb5+ forks the king and queen. A fine finish.

* * * * *

Black: Ed Sheffield (1841)

White: Irenos Cabang

1) Nf3 Nf6
2) Ng1!?

Profoundly influenced by the teachings of McDanlovich, white plays the dreaded Bozo Gambit, with a tempo in hand.

2) Ng8!!

Blacks who is a past master at this line of attack, reads white's mind and plays this fine preventive move.

3) Nc3 Nc6!

White decides to try the other wing but is thwarted at every turn by black.

4) Nbl

Attempting to lure black into a positional mistake, but...

4) Nb8!!

Leaving white without a target, and white is at sea and loses on time!

Also played at the LERA tournament was this game between two masters.

White: Jeremy Silman (2556)
Black: Kenny Fong (2221)

1) d4 Nf6
2) c4 e6
3) Nc3 Bb4

The Nimzoindian. Both sides fight for the e4 square and a share of the center.

4) e3 c5
5) Bd3 Nc6
6) Ne2

White wishes to prevent the doubled pawns, while preparing to castle. Spassky-Fischer, 5th match game, Reykjavik 1972 continued after a transposition of moves 6 Nf3 Bc3+ 7 bc d6 8 e4 e5 9 d5 Ne2 and Fischer won in 27 moves in the blockaded position.

6) cd
7) ed d5
8) O-O dc

Hoping to work against the isolated d pawn.

9) Bc4 O-O
10) a3 Be7

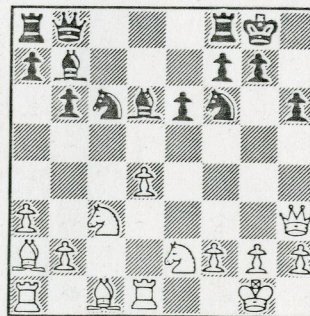
Correct. 10...Bc3 would just give black a bad bishop, less space and good chances to white.

11) Qd3 b6

The bishop must be developed.

12) Rd1 Bb7
13) Ba2 h6
14) Qh3 Bd6
15) Nf4 Qb8
16) Nfe2

And a grandmaster draw is agreed through mutual fear, just as the game gets interesting.



final position.