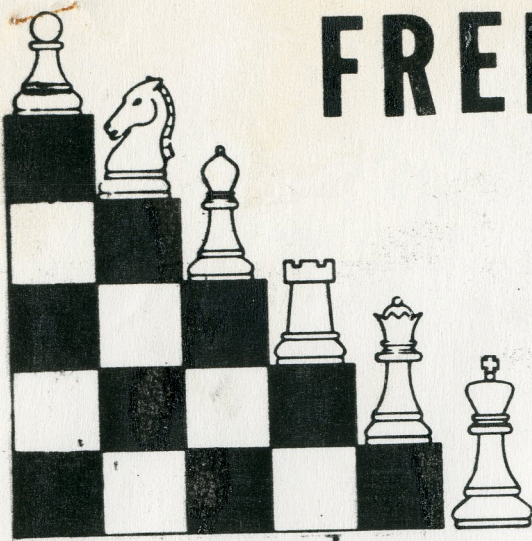


# FREMONT CHESS CLUB

## NEWSLETTER



FREMONT CHESS CLUB MEETS EVERY FRIDAY 7-11 pm.  
AT FREMONT COMMUNITY CHURCH (left side entrance)  
3970Q MISSION BLVD., NEAR STEVENSON BLVD.

MAILING ADDRESS: HANS POSCHMANN, 4621 SENECA  
PARK AVE. FREMONT, CALIFORNIA 94538  
EDITOR: DAN MC DANIEL

AN INTERNATIONAL NEWSLETTER

May 1984

### 3 draws Mar master

"I enjoyed it."

That was quoted by a number of players about the simultaneous chess exhibit by Senior Master Craig Mar at the Fremont Chess Club, including Mar himself.

Facing twenty-three hopeful opponents, Mar shot down twenty of them, while drawing only three in a session that lasted some four and a half hours.

The three heros of the night, were club regulars Nelson Espiritu (1770), Mike Stark (1642) and George Hahn (1491).

Mike's game was the shortest of the three, only 19 moves while Nelson's

was 53 moves, and George's 56.

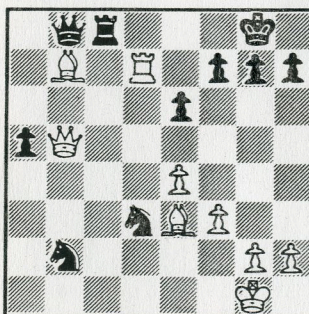
Of the 23 games, 13 players were brave enough to turn in score sheets. Since some of the games turned in were bad enough, we dread to think what the remaining ten games looked like.

The Fremont Argus managed to send a photographer around to cover the event, and I must say that it is difficult to concentrate with a flash going off in your face. Thank you Craig Mar, for a fun time.

### pay attention now

- Apr 20 - Gambit Night
- Apr 27 - Free Night
- May 4 - QUADRA CHESS NIGHT
- May 11 - Time Odds Night
- May 18 - Prepared Opening Night
- May 25 - BLINDFOLD NIGHT
- Jun 1 - Lecture Night
- Jun 8 - Free Night
- Jun 15 - Team Consultation Night
- Jun 22 - Team Consultation Night
- Jun 29 - Quads
- Jul 6 - Quads

FAIRHURST - RESHEVSKY  
Hastings 1938



Black to move, mate in seven.



Craig Mar - John Brand

1 e4 e5; 2 f4 d4; 3 ed e4; 4 d3 Nf6;  
5 Qe2 Bg4; 6 Nf3 Qe7; 7 de Qe4; 8 Nc3  
Bb4; 9 Bd2 Bc3; 10 Bc3 Bf3; 11 gf Qe2  
ch; 12 Be2 Nd5; 13 Bg7 Rg8; 14 Be5 c6;  
15 Bd3 h5; 16 Be4 Ne7; 17 Bh7 Rg2; 18  
Kf1 Rd2; 19 Bd3 Nd5; 20 Rel Kd8; 21  
Rg1 1-0.

Craig Mar - Nolan McDaniel

1 e4 e5; 2 f4 d6; 3 Nc3 c6; 4 d4 Nd7;  
5 Nf3 Be7; 6 de de; 7 fe Bb4; 8 Bc4  
Ne5; 9 Qd8 ch Kd8; 10 Ne5 Nh6; 11 Bh6  
Bc3 ch; 12 bc Re8; 13 Nf7ch Ke7; 14  
Bg7 Rg8; 15 Bd4 Be6; 16 Be6 Ke6; 17  
Nh6 Rg2; 18 0-0-0 Rg6; 19 Nf5 Rg4; 20  
Ng3 b6; 21 Rhf1 Rg6; 22 Rf5 c5; 23  
Be5 Ke7; 24 Rh5 Rg3; 25 hg Rh8; 26  
Bh8 1-0.

Craig Mar - Mike Stark

1 e4 c5; 2 Nf3 e6; 3 Nc3 Nc6; 4 g3  
d6; 5 Bg2 g6; 6 d4 cd; 7 Nd4 Nge7;  
8 N4b5 Bg7; 9 Qd6 Bc3ch; 10 bc 0-0;  
11 Bh6 Qd6; 12 Nd6 Rd8; 13 Rd1 e5; 14  
0-0 Be6; 15 a3 Rd7; 16 f4 Rad8; 17  
fe Ne5; 18 Bg5 Kf8; 19 Bh6ch Kg8  
 $\frac{1}{2} - \frac{1}{2}$ .

Craig Mar - Hans Poschmann

1 e4 c5; 2 Nf3 d6; 3 Bb5ch Bd7; 4 a4  
Nc6; 5 c3 Nf6; 6 Qe2 Qc7; 7 0-0 e6;  
8 d4 Be7; 9 Bg5 h6; 10 Bf6 Bf6; 11 d5  
Ne5; 12 de Nf3ch; 13 Qf3 fe; 14 Qh5  
ch Ke7; 15 Na3 a6; 16 Bd7 Qd7; 17 Nc4  
Qe8; 18 Qh3 b5; 19 Ne3 Qg6; 20 Rfel  
Be5; 21 Ng4 Bf4; 22 g3 h5; 23 Ne3 Kf7;  
24 Ng2 Bg5; 25 f4 Be7; 26 f5 Qh6; 27  
Nf4 e5; 28 Ng6 Rhd8; 29 Qf1 c4; 30 h4  
Bf6; 31 Qf2 d5; 32 ab de; 33 Ra6 e3;  
34 Qe3 Qe3; 35 Re3 Rab8; 36 Ne5 Be5;  
37 Re5 Rd1; 38 Kf2 Rd2; 39 Re2 Re2;  
40 Ke2 Rb5; 41 Rc6 Rb2; 42 Kf3 Rb1;  
43 Rc4 Kf6; 44 Rc5 Rf1; 45 Ke4 Rel;  
46 Kf3 Rcl; 47 Kf2 Rc2; 48 Kf3 Rcl;  
49 Ke4 Rel; 50 Kd4 Rg1; 51 Rc6 Kf5;  
52 Rc5 Kf6; 53 Rg5 g6; 54 Kc5 1-0.

Craig Mar - Rich Carlstadt

1 e4 e5; 2 f4 d6; 3 Nc3 c6; 4 d4 f6;  
5 Nf3 Bg4; 6 de Bf3; 7 Qf3 de; 8 fe  
h6; 9 Bc4 Bc5; 10 Qh5 Kd7; 11 e6 Kc7;  
12 Qc5 Ne7; 13 Bf4 Kc8; 14 Rd1 Qe8;  
15 Qd6 Qe8; 16 Qa3 Qe8; 17 0-0 a5; 18  
Na4 b5; 19 Nb6 Kb7; 20 Na8 a4; 21 Be2  
Ka8; 22 c4 Qc8; 23 cb cb; 24 Qe7 Qa6;  
25 Rd7 1-0.

Craig Mar - Nelson Espiritu

1 e4 c5; 2 Nf3 d6; 3 d4 cd; 4 Nd4  
Nf6; 5 Nc3 Nc6; 6 Bc4 g6; 7 Nc6 bc;  
8 e5 Ng4; 9 e6 f5; 10 0-0 Bg7; 11  
Qe2 0-0; 12 Bb3 Bb7; 13 h3 Nf6; 14  
Be3 Qc7; 15 Rb1 a6; 16 Na4 c5; 17  
c4 Qc6; 18 f3 Nh5; 19 Qd2 f4; 20 Bf2  
Be5; 21 Nc3 Qc8; 22 Nd5 Bd5; 23 cd  
Ng3; 24 Rel Rf5; 25 Ba4 Qf8; 26 Bc2  
Rg5; 27 Bd3 Qh6; 28 Kh2 Rh5; 29 Rbd1  
g5; 30 Bg3 fg; 31 Kgl Rf8; 32 Re5  
de; 33 Qe3 g4; 34 Qh6 Rh6; 35 hg Rf4;  
36 Be4 Rh4; 37 d6 ed; 38 Rd6 Kf8;  
39 Rd7 Re4; 40 fe Rg4; 41 Rh7 Re4;  
42 Kf1 Rf4; 43 Kel Rf2; 44 Rf7 Rf7;  
45 ef Kf7; 46 Ke2 Kf6; 47 Kf3 Kf5;  
48 Kg3 Ke4; 49 Kf2 Kd3; 50 g4 Ke4;  
51 Kg3 Kd3; 52 Kf2 Ke4; 53 Kg3  $\frac{1}{2} - \frac{1}{2}$

Craig Mar - Ken Walters

1 e4 c5; 2 Nf6 d6; 3 d4 cd; 4 Nd4  
Nc6; 5 c4 Nf6; 6 Nc3 e6; 7 g3 Be7;  
8 Bg2 a6; 9 0-0 Qc7; 10 b3 0-0; 11  
Bb2 Bd7; 12 Rcl Rac8; 13 Qd2 Nd4; 14  
Qd4 Bc6; 15 h3 Rfd8; 16 Kh1 e5; 17  
Qd3 Qb8; 18 Qe2 b5; 19 Nd5 Nd5; 20 ed  
Bd7; 21 f4 Bf6; 22 c5 Rc5; 23 Rc5 dc;  
24 fe Re8; 25 Rel Bf5; 26 d6 Qc8; 27  
Kh2 Qd7; 28 Qf2 Bd8; 29 Qc5 Ba5; 30  
Rcl Bd2; 31 Rd1 Rc8; 32 Qd4 Bh6; 33  
Rf1 Be6; 34 Rf2 Rf8; 35 Bc3 Bg5; 36  
Ba5 Bd8; 37 Bd8 Qd8; 38 Rc2 f6; 39  
Bd5 Bd5; 40 Qd5 Kh8; 41 e6 1-0.

Craig Mar - Carol McDaniel

1 e4 e5; 2 f4 ef; 3 d4 Nf6; 4 Nc3 d6;  
5 e5 g5; 6 h4 gh; 7 Bf4 Qe7; 8 Qe2  
Bg4; 9 Nf3 Nc6; 10 0-0-0 0-0-0; 11  
Qe3 Nb4; 12 d5 b6; 13 a3 Nc2; 14 Kc2  
h3; 15 Rh3 Bh3; 16 gh Rg8; 17 Ba6  
Kb8; 18 Nd4 Nd7; 19 Nc6 Ka8; 20 Ne7  
Be7; 21 Nb5 Rc8; 22 Bc8 Rc8; 23 Qc3  
Bd8; 24 Qc6 Kb8; 25 Qd7 f6; 26 ef Bf6;  
27 Kbl Kb7; 28 Bd6 a6; 29 Qc6 Kb8;  
30 Qb6 1-0.

Craig Mar - Allen Wong

1 e4 c6; 2 d4 d5; 3 Nc6 de; 4 Ne4 Nf6;  
5 Nf6 gf; 6 Ne2 Bf5; 7 Ng3 Bg6; 8 h4  
h5; 9 Be2 Nd7; 10 c3 Qa5; 11 b4 Qc7;  
12 Nh5 e5; 13 Ng3 Qb6; 14 h5 Bh7; 15  
d5 0-0-0; 16 Be3 c5; 17 Bg4 Rg8; 18  
Nf5 Kb8; 19 a3 Qb5; 20 Be2 Qb6; 21  
g4 Bf5; 22 gf Qc7; 23 b5 c4; 24 Qa4  
Nb6; 25 Bb6 Qb6; 26 Qc5 Rc8; 27 Qd3  
Bc5; 28 Qf3 Qa5; 29 Kf1 Rg5; 30 Rgl  
Bd6; 31 Rg5 fg; 32 c4 Qd2; 33 Rd1  
Qb2; 34 f6 e4; 35 Qe4 Qf6; 36 Bg4 Rh8;  
37 Rel Bc5; 38 Re2 Qal; 39 Kg2 f6;  
40 d6 Rd8; 41 Bf3 1-0.



Craig Mar - Paul Friedrich

1 e4 e5; 2 f4 ef; 3 Bc4 Qh4; 4 Kf1 d6;  
5 d4 Bg4; 6 Nf3 Qf6; 7 Nc3 Bf3; 8 gf  
c6; 9 h4 Nd7; 10 Ne2 g6; 11 Bf4 h6;  
12 Qd2 Rh7; 13 h5 g5; 14 Bg3 Qf3; 15  
Kgl Ngf6; 16 Rf1 Ne4; 17 Qd3 Qd3; 18  
Bd3 d5; 19 Be4 de; 20 Nc3 0-0-0; 21  
Ne4 f6; 22 c3 Rf7; 23 Rf5 Re8; 24 Nd2  
Re3; 25 Nf1 Re4; 26 Re2 Nb6; 27 Kg2  
Re6; 28 Kh2 Nd5; 29 Nc4 Be7; 30 Ne5  
Rh7; 31 Ng4 b5; 32 Kg2 Kb7; 33 Kf3  
a5; 34 Re2 Re2; 35 Ke2 a4; 36 Ne3 Ne3;  
37 Ke3 Rh8; 38 Kf3 Rd8; 39 Kg4 Rd7; 40  
Rf2 Rd5; 41 Rf5 Rd7; 42 Rf2 Rd6; 43  
Rf3 Rd5; 44 b3 ab; 45 ab Kc7; 46 c4  
bc; 47 bc Ra5; 48 c5 Kd7; 49 Kf5 Ra2;  
50 Kg6 Re2; 51 Kh6 Re4; 52 Kg7 g4; 53  
Rd3 f5; 54 h6 f4; 55 d5 cd; 56 Rd5 Kc6;  
57 Rh5 1-0.

Craig Mar - Dan McDaniel

1 e4 Nf6; 2 e5 Nd5; 3 d4 d6; 4 Nf3  
Bg4; 5 Be2 Nc6; 6 c4 Nb6; 7 ed ed; 8  
d5 Bf3; 9 Bf3 Ne5; 10 Be2 Be7; 11 Qc2  
0-0; 12 a4 Re8; 13 0-0 Bf6; 14 a5 Nbd7;  
15 Be3 b6; 16 Nc3 Ng6; 17 Nb5 a6; 18  
Nd4 Bd4; 19 Bd4 Nc5; 20 b4 Nb3; 21  
Qb3 Re2; 22 Rae8 Rel; 23 Rel ba; 24  
ba Rb8; 25 Qa4 Ne5; 26 Be5 de; 27 g3  
f6; 28 Rd1 Qd6; 29 Qc6 Qc6; 30 dc Kf8;  
31 Rd7 Rb4; 32 Rc7 Rc4; 33 Rb7 Rc6; 34  
Rb6 Rc2; 35 Ra6 Ra2; 36 Ra7 Kg8; 37 a6  
Kf8; 38 Kg2 Kg8; 39 g4 Kf8; 40 h4 Kg8;  
41 h5 g6; 42 h6 f5; 43 Rg7 Kh8; 44 a7  
fg; 45 Rb7 1-0.

Craig Mar - George Hahn

1 e4 e5; 2 f4 ef; 3 Bc4 Nc3; 4 Nf3  
Be7; 5 0-0 Nf6; 6 e5 Ng4; 7 d4 Ne3;  
8 Be3 fe; 9 Qe2 d5; 10 Bb5 Bd7; 11  
Qe3 0-0; 12 Nc3 Nb4; 13 Bd7 Qd7; 14  
Racl b6; 15 a3 Na6; 16 Qd3 Nb8; 17  
e6 fe; 18 Ne5 Qe8; 19 Rfe8 c5; 20 Ne2  
Nc6; 21 Nc6 Qcg; 22 b3 Qe8; 23 Qe3  
Bd6; 24 Rd1 Rf6; 25 Ng3 Qg6; 26 Re2  
Raf8; 27 Qd3 Qd3; 28 Rd3 Bg3; 29 hg  
Rf1; 30 Kh2 R8f6; 31 g4 Rlf2; 32 Rdd2  
Re2; 33 Re2 Kf7; 34 Kg3 Rg6; 35 Kf4  
h6; 36 Rd2 Ke7; 37 c3 Rf6; 38 Ke3 Kd6;  
39 a4 g5; 40 g3 a5; 41 c4 Rf1; 42 Rh2  
Rb1; 43 cd ed; 44 Rh6 Kc7; 45 Rh7 Kc6;  
46 Rh6 Kb7; 47 Rh7 Ka6; 48 Rd7 Rb3;  
49 Kd2 Rb4; 50 dc bc; 51 Rd6 Kb7; 52  
Rd5 Rd4; 53 Rd4 cd; 54 Kd3 Kc6; 55  
Kd3 Kd6  $\frac{1}{2}$ - $\frac{1}{2}$

Craig Mar - William Lull

1 e4 e5; 2 f4 ef; 3 Bc4 Nf6; 4 Nc3 d6;

5 d4 Be7; 6 Bf4 0-0; 7 Qf3 c5; 8  
Nge2 Bd7; 9 dc dc; 10 0-0-0 Qb6; 11  
Bb8 Rab8; 12 e5 Bc6; 13 ef Bf3; 14  
fe Bg2; 15 ef(Q) Kf8; 16 Rhgl Qh6;  
17 Kbl Qh2; 18 Rd3 Bc6; 19 Rf1 f6;  
20 Nf4 Re8; 21 Ne6 Ke7; 22 Ng7 Rh8;  
23 Nf5 Kf8; 24 Rd8 Be8; 25 Rel Qh5;  
26 Ree8 Qe8; 27 Re8 Ke8; 28 Ne4 Rf8;  
29 Nc5 b6; 30 Ne6 Rh8; 31 Nf4 Kd8;  
32 Nh5 Kc7; 33 Kcl Rf8; 34 Kd2 Re8;  
35 Bd3 Kc6; 36 Nf6 Rh8; 37 Nh6 Kc5;  
38 Nh7 b5; 39 Ng4 Kb4; 40 a3 Ka4;  
41 Nhf6 Rf8; 42 Nd5 a5; 43 Nf3 1-0.

Craig Mar - Mark Trombley

1 e4 d6; 2 d4 Nf6; 3 Nc3 g6; 4 f4  
Bg7; 5 Nf3 0-0; 6 e5 de; 7 fe Ne8;  
8 Bc4 Kh8; 9 0-0 f6; 10 ef Bf6; 11  
Bh6 Ng7; 12 Ne5 Be5; 13 de Bf5; 14  
g4 Bc2; 15 Qc2 Qd4; 16 Kh1 Nc6; 17  
Qe4 Qe4; 18 Ne4 Ne5; 19 Rf8 Rf8; 20  
Be2 b6; 21 h3 Kg8; 22 Kg2 Rd8; 23  
Rdl Rdl; 24 Bdl Nd3; 25 Bb3 Kh8; 26  
Ng5 Ne5; 27 Nf7 Nf7; 28 Bf7 1-0.

Craig Mar - Mike Sweeney

1 e4 c6; 2 d4 d5; 3 Nc3 de; 4 Ne4  
Nf6; 5 Nf6 gf; 6 Ne2 Bf5; 7 Ng3 Bg6;  
8 h4 h5; 9 Be2 e6; 10 c3 Bd6; 11  
Nh5 Bh5; 12 Bh5 Nd7; 13 Bf3 f5; 14  
h5 Qe7; 15 Qe2 Nb6; 16 Bd2 0-0-0;  
17 0-0-0 Qc7; 18 g3 Na4; 19 Qc4 Nb6;  
20 Qb3 Bf8; 21 Rhel c5; 22 Bg5 Bh6;  
23 Bh6 Rh6; 24 dc Rdl; 25 Qd1 Qc5;  
26 Qd2 Rh8; 27 Rdl Nd5; 28 Bd5 ed;  
29 h6 d4; 30 Qd4 Qd4; 31 Rd4 Rh6;  
32 Rf4 Rh5; 33 Rh4 Rg5; 34 Rh7 f4;  
35 gf Rf5; 36 Rh4 Rd5; 37 Rg4 Kc7;  
38 Rg5 Rd6; 39 Rf5 f6; 40 Kc2 Kc6;  
41 c4 b6; 42 Kc3 a6; 43 b4 Kd7; 44  
c5 bc; 45 bc Rc6; 46 Rd5 Kc7; 47 f5  
Kc8; 48 Kc4 Kc7; 49 a3 Kc8; 50 Rd6  
Kc7; 51 Kd5 Rd6; 52 cd Kd7; 53 a4  
a5; 54 f3 Kc8; 55 Ke6 1-0.

---

SOLUTION TO THE PUZZLE

1...Rcl; 2 Bcl Qa7; 3 Qb6 Qb6;  
4 Rd4 Qd4; 5 Kh1 Nf2; 6 Kgl  
Nh3; 7 K moves Qf2 mate.

---

MASTER GAME OF THE MONTH

What are you talking about? You  
just played through fourteen of  
them?