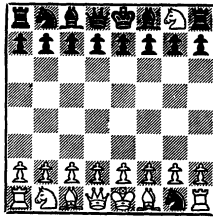


THE CALIFORNIA CHESS REPORTER

XII 5, 1963

EVANS WINS AT WESTCHESTER



FROM: 244 Kearny St. San Francisco 8

TO:

David Lawson
111 Montague Street
Brooklyn 2, New York

THE CALIFORNIA CHESS REPORTER

Vol. XII, No. 5

\$2 per year

February, 1963

THE CALIFORNIA CHESS REPORTER, 244 Kearny Street, San Francisco 8

Monthly except January, March, August, and October

Official Organ of the California State Chess Federation

Editor: Guthrie McClain

Associate Editors: Gordon S. Barrett, Los Angeles; Dr. Mark W. Eudey, Berkeley;

Neil T. Austin, Sacramento; Irving Rivise, Los Angeles

Games Editor: Robert E. Burger

Guest Annotator: Intl. Master Imre Konig

Second-class postage paid at San Francisco, California

CONTENTS

| | | | |
|-------------------------------|-----------|---------------------------|-----------|
| N-S Team Match 1963 Proposals | 69 | S. Parker, Van Nuys Champ | ... 75 |
| Larry Evans Wins Westchester | 70-72 | Game of the Month | ... 76-77 |
| Bay Area Team Matches | ... 72-73 | Editorial, Neil T. Austin | ... 78-80 |
| Addison Wins Sta. Monica Open | ... 74 | Games | ... 81-83 |
| L. Johnson, So. Bay Champ | ... 75 | Tasks | ... 84 |

THE 1963 NORTH-SOUTH TEAM MATCH

Herbert T. Abel of Santa Monica made the suggestion, reported on page 60 of last month's issue, that the annual North-South team match be held on a day which is not part of a three-day week end; in other words, save Memorial Day for a tournament and schedule the North-South match for an ordinary Sunday.

Opinions from widely-separated parts of California concur with this suggestion. Therefore, the 1963 match will be held earlier in May. The proponent of the change, Herb Abel, suggests May 12th because May 19th is Morphy Day in southern California.

It would seem that either May 12th or May 26th would be acceptable.

Now that the date is narrowed down, it seems appropriate to raise the old question of location. For a number of years the Californian Hotel at Fresno has held the North-South match. Every year the old timers on the North team have asked why not San Luis Obispo, and every year received the answer "because the accommodations were not satisfactory to the South." Since the South has lost five straight years, it might be that Southerners now would prefer San Luis Obispo to Fresno. Certainly, accommodations in San Luis Obispo have improved since our last match there, in 1955. What do our readers think?

LARRY EVANS WINS WESTCHESTER FIESTA

Larry Evans, who recently tied for third in the U. S. Championship, won the third annual Westchester Fiesta, held at Loyola University February 15-17, by the score $5\frac{1}{2}-\frac{1}{2}$. Evans allowed one draw to Emil Bersbach on the way to the title, the \$150 first prize and the trophy. Tied for second were four players: Irving Rivise, Bersbach, Walt Cunningham, and Rex Wilcox - all with 5-1.

In addition to the first prize of \$150 there were other prizes ranging from \$75 to \$15 including awards to the highest expert, Class A, Class B, Class C, and to the highest unrated player. The tournament was a six-round Swiss with one round on Friday, three rounds on Saturday and two rounds on Sunday. The director was Herbert T. Abel, who was assisted by Joe Kalivoda and Ray Snow.

WESTCHESTER FIESTA, FEBRUARY 15-16-17, 1963

| | 1 | 2 | 3 | 4 | 5 | 6 | Score |
|--------------------|-----|------|-----|-----|-----|-----|-----------------------------|
| 1. Evans, L. | W54 | W15 | W11 | D3 | W6 | W8 | $5\frac{1}{2}-\frac{1}{2}$ |
| 2. Rivise I. | W21 | W28 | D12 | D12 | W22 | W19 | 5 - 1 |
| 3. Bersbach, E. | W20 | W69 | W46 | D1 | W10 | D6 | 5 - 1 |
| 4. Cunningham, W. | W74 | D10 | W19 | W27 | D7 | W11 | 5 - 1 |
| 5. Wilcox, R. | W45 | L24 | W26 | W56 | W13 | W15 | 5 - 1 |
| 6. Henin, C. | W59 | W35 | W13 | W33 | L1 | D3 | $4\frac{1}{2}-1\frac{1}{2}$ |
| 7. Smith, P. | W48 | W61 | D8 | W14 | D4 | D16 | $4\frac{1}{2}-1\frac{1}{2}$ |
| 8. Weinberger, T. | W38 | W78* | D7 | W25 | W12 | L1 | $4\frac{1}{2}-1\frac{1}{2}$ |
| 9. Hanken J. | W42 | L13 | W38 | W35 | D24 | W25 | $4\frac{1}{2}-1\frac{1}{2}$ |
| 10. Kennedy, E. | W55 | D4 | W17 | W53 | L3 | D12 | 4 - 2 |
| 11. Jaffray, J. | W47 | W34 | L1 | W43 | W20 | L4 | 4 - 2 |
| 12. Standers, L. | W66 | W36 | D2 | W16 | L8 | D10 | 4 - 2 |
| 13. Kupersmith, L. | W72 | W9 | L6 | W55 | L5 | W24 | 4 - 2 |
| 14. Lessing, N. | W71 | D18 | W29 | L7 | W39 | D17 | 4 - 2 |
| 15. Straus | W50 | L1 | W59 | W42 | W33 | L5 | 4 - 2 |
| 16. Addison, W. | W43 | W56 | D25 | L12 | W27 | D7 | 4 - 2 |
| 17. Warner, E. | W76 | D29 | L10 | W46 | W30 | D14 | 4 - 2 |
| 18. Freeman, R. | W58 | D14 | L4 | D26 | W36 | W41 | 4 - 2 |
| 19. Quillen, P. | W52 | W57 | L33 | W28 | W23 | L2 | 4 - 2 |
| 20. McCartney, W. | L3 | W60 | W67 | W31 | L11 | W34 | 4 - 2 |
| 21. Warner, I. | L2 | D32 | W50 | D62 | W40 | W38 | 4 - 2 |
| 22. Almgren, S. | L57 | W41 | W76 | W34 | L2 | W42 | 4 - 2 |
| 23. Bliss, R. | W68 | L25 | W58 | W44 | L19 | W37 | 4 - 2 |
| 24. Leidner, M. | W40 | W5 | D53 | D2 | D9 | L13 | $3\frac{1}{2}-2\frac{1}{2}$ |

| Westchester Fiesta | 1 | 2 | 3 | 4 | 5 | 6 | Score |
|--------------------|-----|-----|------|------|------|------|-------|
| 25. Rubin, G. | W49 | W23 | D16 | L8 | W53* | L9 | 3½-2½ |
| 26. Jester, T. | W30 | D27 | L5 | D18 | W43 | D28 | 3½-2½ |
| 27. Binns, P. | W37 | D26 | W51 | L4 | L16 | W52 | 3½-2½ |
| 28. O'Neill, H. | W64 | L2 | W69 | L19 | W47 | D26 | 3½-2½ |
| 29. Sheridan, G. | W63 | D17 | L14 | W48 | L44 | W62* | 3½-2½ |
| 30. Castle | L26 | W66 | D39 | W51 | L17 | W33 | 3½-2½ |
| 31. Stani, K. | L33 | W65 | W37 | L20 | D52 | W51 | 3½-2½ |
| 32. Maillard, W. | L35 | D21 | W45 | L39 | W75* | W50 | 3½-2½ |
| 33. Rader, H. | W31 | W44 | W19 | L6 | L15 | L30 | 3 - 3 |
| 34. Johnson, L. | W60 | L11 | W61 | L22 | W62 | L20 | 3 - 3 |
| 35. Zwerdling, H. | W32 | L6 | W57 | L9 | L41 | W55 | 3 - 3 |
| 36. Geller, S. | W41 | L12 | L44 | W75 | L18 | W61* | 3 - 3 |
| 37. Swett, C. | L27 | W40 | L31 | W60 | W56 | L23 | 3 - 3 |
| 38. Cooper, M. | L8 | W75 | L9 | W73 | W61 | L21 | 3 - 3 |
| 39. Parker, S. | L53 | W70 | D30 | W32 | L14 | D45 | 3 - 3 |
| 40. Teal, W. | L24 | L37 | W65 | W49 | L21 | W46 | 3 - 3 |
| 41. Detrich, J. | L36 | L22 | W72 | W58 | W35 | L18 | 3 - 3 |
| 42. Haley, C. | L9 | W72 | W77 | L15 | W55 | L22 | 3 - 3 |
| 43. Rogosin, H. | L16 | W79 | W63 | L11 | L26 | W60 | 3 - 3 |
| 44. Hunnex, G. | W65 | L33 | W36 | L23 | W29 | - - | 3 - 3 |
| 45. Stumbrs, O. | L5 | D50 | L32 | W80* | W69 | D39 | 3 - 3 |
| 46. Uzgalis, W. | W73 | W80 | L3 | L17 | W67 | L40 | 3 - 3 |
| 47. Guilaroff, J. | L11 | W68 | L56 | W64 | L28 | W58 | 3 - 3 |
| 48. Sikes, H. | L7 | D54 | W81* | L29 | D57 | W63 | 3 - 3 |
| 49. Manderson, E. | L25 | L67 | W79 | L40 | W64* | W69* | 3 - 3 |
| 50. Pease, R. | L15 | D45 | L21 | W70 | W59 | L32 | 2½-3½ |
| 51. Oster, R. | D81 | W62 | L27 | L30 | W54 | L31 | 2½-3½ |
| 52. Kluz, R. | L19 | L55 | W70 | W63 | D31 | L27 | 2½-3½ |
| 53. Jacobs, R. | W39 | W77 | D24 | L10 | L25* | - - | 2½-3½ |
| 54. Rogosin, D. | L1 | D48 | L62 | W81* | L51 | D59 | 2½-3½ |
| 55. Kotz, R. | L10 | W52 | W80 | L13 | L42 | L35 | 2 - 4 |
| 56. Larsen, R. | W79 | L16 | W47 | L5 | L37 | L57 | 2 - 4 |
| 57. Schlosser, M. | W22 | L19 | L35 | D67 | D43 | W56 | 2 - 4 |
| 58. Rosenthal, S. | L18 | W71 | L23 | L41 | W72 | L47 | 2 - 4 |
| 59. Walker, D. | L6 | W64 | L3 | D69 | L50 | D54 | 2 - 4 |
| 60. Maedia, A. | L34 | L20 | W66 | L37 | W73 | L43 | 2 - 4 |
| 61. Berres, R. | W67 | L7 | L34 | W76 | L33 | L36* | 2 - 4 |
| 62. Thomas, G. | D80 | L51 | W54 | D21 | L52 | L29* | 2 - 4 |

| Westchester Fiesta | 1 | 2 | 3 | 4 | 5 | 6 | Score |
|--------------------|------|-----|------|------|------|-----|-------|
| 63. Cesare, A. | L29 | W74 | L43 | L52 | W71* | L48 | 2 - 4 |
| 64. Kleinick, A. | L28 | L59 | W74 | L47 | L49* | W71 | 2 - 4 |
| 65. Rains, S. | L44 | L31 | L40 | L71 | W79 | W72 | 2 - 4 |
| 66. Snow, R. | L12 | L30 | L60 | D79 | D70 | W74 | 2 - 4 |
| 67. Geyer | L61 | W49 | L20 | D57 | L46 | - - | 2 - 4 |
| 68. Rogosin, P. | L23 | L47 | L75 | ByW | L74 | W73 | 2 - 4 |
| 69. Newman, | W By | L3 | L28 | D59 | L45 | L49 | 1½-4½ |
| 70. Stremel, J. | L77 | L39 | L52 | L50 | D66 | W79 | 1½-4½ |
| 71. Peck, W. | L14 | L58 | L73 | W65 | L63* | L64 | 1 - 5 |
| 72. Clark, R. | L13 | L42 | L41 | W74 | L58 | L65 | 1 - 5 |
| 73. Young, H. | L46 | L76 | W71 | L38 | L60 | L68 | 1 - 5 |
| 74. Walt, H. | L4 | L63 | L64 | L72 | W68 | L66 | 1 - 5 |
| 75. Stolpe, J. | L78 | L38 | W68 | L36 | L32* | - - | 1 - 5 |
| 76. Bullockus, T. | L17 | W73 | L22 | L61 | - - | - - | 1 - 5 |
| 77. Hufnagel, F. | W70 | L53 | L42 | - - | - - | - - | 1 - 5 |
| 78. Restreppo, G. | W75 | L8* | - - | - - | - - | - - | 1 - 5 |
| 79. Murphy, J. | L56 | L43 | L49 | D66 | L65 | L70 | ½ -5½ |
| 80. Metz, F. | D62 | L46 | L55 | L45 | - - | - - | ½ -5½ |
| 81. Gordon, M. | D51 | - - | L48* | L54* | - - | - - | ½ -5½ |

*Forfeit

MECHANICS' INSTITUTE TAKES LEAD IN BAY AREA TEAM MATCHES

The powerhouse Mechanics' Institute team won its first two matches in the San Francisco Bay Area Chess League team matches for 1963, defeating a new team, the Oakland YMCA, 5-2 and Castle 5-2. Meanwhile, the strong Golden Gate team and a surprising University of California team kept pace by also winning the first two matches.

DIVISION A

Round 1, January, 1963

Round 2, January, 1963

| OAKLAND "Y" 2 | | MECH. INST. 5 | CASTLE 2 | | MECH. INST. 5 | | |
|----------------|---|---------------|----------|---------------|---------------|------------|---|
| 1. F Thornally | ½ | J Murray | ½ | 1. R Burger | ½ | J. Murray | ½ |
| 2. R Thacker | 0 | C. Bagby | 1 | 2. V Zemitis | ½ | C Bagby | ½ |
| 3. R Trenberth | 0 | J Schmitt | 1 | 3. G McClain | 0 | J Schmitt | 1 |
| 4. R Cuneo | 0 | Sutherland | 1 | 4. D Belmont | 0 | Sutherland | 1 |
| 5. Quinlivan | ½ | Bullwinkel | ½ | 5. R Hultgren | 0 | Bullwinkel | 1 |
| 6. B Forman | 0 | K Bendit | 1 | 6. Hendricks | 0 | K Bendit | 0 |
| 7. R Headrick | 1 | C Svalberg | 0 | 7. R Willson | 1 | M Sable | 0 |

| <u>GOLDEN GATE 4</u> | | | <u>REDWOOD 3</u> | <u>GOLDEN GATE 5</u> | | | <u>OAKLAND Y 2</u> | | |
|----------------------|---------------|--------------|------------------|--|---------------|-------------|--|--|--|
| 1. Pafnutieff | $\frac{1}{2}$ | R Hoppe | $\frac{1}{2}$ | 1. Pafnutieff | 1 | F Thornally | 0 | | |
| 2. H Gross | 1 | J Blackstone | 0 | 2. E Krestini | 0 | R Thacker | 1 | | |
| 3. E Krestini | $\frac{1}{2}$ | R Wilcox | $\frac{1}{2}$ | 3. C Capps | 1 | R Trenberth | 0 | | |
| 4. C Capps | 0 | M Wilkerson | 1 | 4. P Dahl | 1 | M Quinlivan | 0 | | |
| 5. P Dahl | 1 | V Radaikin | 0 | 5. J Kalisch | 1 | R Cuneo | 0 | | |
| 6. J Kalisch | $\frac{1}{2}$ | R Henry | $\frac{1}{2}$ | 6. E Simanis | 1 | B Forman | 0 | | |
| 7. E Simanis | $\frac{1}{2}$ | G Kane | $\frac{1}{2}$ | 7. A Palmin | 0 | R Headrick | 1 | | |
| <u>CASTLE 3</u> | | | <u>U. C. 4</u> | <u>REDWOOD 2$\frac{1}{2}$</u> | | | <u>U. C. 4$\frac{1}{2}$</u> | | |
| 1. N Falconer | 0 | G Soules | 1 | 1. R Wilcox | $\frac{1}{2}$ | G Soules | $\frac{1}{2}$ | | |
| 2. G McClain | 0 | R Ellis | 1 | 2. J Mortz | 0 | R Ellis | 1 | | |
| 3. W Hendricks | 0 | T Dorsch | 1 | 3. R Hoppe | $\frac{1}{2}$ | P Keleman | $\frac{1}{2}$ | | |
| 4. V Zemitis | 0 | P Keleman | 1 | 4. M Wilkerson | 1 | E Bogas | 0 | | |
| 5. D Belmont | 1 | E Bogas | 0 | 5. J Blackstone | 0 | T Dorsch | 1 | | |
| 6. R Willson | 1 | P Coffino | 0 | 6. R Henry | 0 | D Dean | 1 | | |
| 7. E Lien | 1 | D Dean | 0 | 7. L Allen | $\frac{1}{2}$ | S Sloan | $\frac{1}{2}$ | | |

In Division B, a section with only four teams, the Mechanics' Institute "Rooks" are in the lead after two rounds.

DIVISION B

| <u>Round 1, January , 1963</u> | | | | <u>Round 2, January , 1963</u> | | | |
|--|---------------|--|---------------|--|---------------|--|---------------|
| <u>M. I. ROOKS 4$\frac{1}{2}$</u> | | <u>GOLDEN G. 1$\frac{1}{2}$</u> | | <u>REDWOOD 2</u> | | <u>M. I. ROOKS 4</u> | |
| 1. M Ewell | 1 | H Dasteel | 0 | 1. F Cardenas | 0 | M Ewell | 1 |
| 2. H Branton | 1 | H King | 0 | 2. M Morris | 1 | H Branton | 0 |
| 3. A Ford | $\frac{1}{2}$ | G Lutz | $\frac{1}{2}$ | 3. S Wylie | 0 | K Laxson | 1 |
| 4. K Laxson | 1 | N Nielsen | 0 | 4. M Goodall | 0 | I Warner | 1 |
| 5. E Bogisch | 0 | C Huneke | 1 | 5. H Finley | 1 | Garcia | 0 |
| 6. Garcia | 1 | A Fishel | 0 | 6. Venable | 0 | E Bogisch | 1 |
| <u>REDWOOD 4</u> | | <u>M. I. PAWNS 2</u> | | <u>M. I. PAWNS 3$\frac{1}{2}$</u> | | <u>GOLDEN G. 2$\frac{1}{2}$</u> | |
| 1. F Cardenas | 0 | S Rubin | 1 | 1. S Rubin | 1 | H Rosenbaum | 0 |
| 2. Venable | 0 | Menaster | 1 | 2. F Schoene | 0 | B Gross, Dr. | 1 |
| 3. M Morris | 1 | Forfeit | 0 | 3. N McLeod | 1 | F Lutz | 0 |
| 4. V Jong | 1 | F Lutz | 0 | 4. D McLeod | $\frac{1}{2}$ | N Nielsen | $\frac{1}{2}$ |
| 5. S Genits | 1 | O Shank | 0 | 5. O Shank | 0 | C Huneke | 1 |
| 6. C Savery | 1 | L Soohoo | 0 | 6. R Black | 1 | A Fishel | 0 |

ADDISON WINS SANTA MONICA OPEN

Bill Addison added another title to his collection in December when he won the Santa Monica Open with six wins and two draws. Dr. Anthony Saily was knocked out of a first place tie in the last round by Paul Quillen.

SANTA MONICA OPEN, DECEMBER 1962

| | 1 | 2 | 3 | 4 | 5 | 6 | 7 | 8 | Score |
|---------------------|-----|-----|-----|------|------|------|------|------|-------|
| 1. Addison, W. | W32 | W13 | D24 | W26 | D3 | W4 | W5 | W8 | 7 - 1 |
| 2. Quillen, P. | L18 | W27 | W31 | W6 | D11 | W8 | D14 | W3 | 6 - 2 |
| 3. Saily, A. | W7 | W11 | W8 | D5 | D1 | W14 | W4 | L2 | 6 - 2 |
| 4. Jacobs, R. | W31 | W6 | D9 | W24 | W5 | L1 | L3 | W14 | 5½-2½ |
| 5. Rivise, I. | W29 | W15 | W26 | D3 | L4 | W11 | L1 | W12 | 5½-2½ |
| 6. Bullockus, T. | W23 | L4 | W34 | L2 | D16 | W21 | D11 | W18 | 5 - 3 |
| 7. Eglitis, A. | L3 | D23 | W21 | D22 | W29 | L10 | W16 | W15 | 5 - 3 |
| 8. Lessing, N. | W34 | W17 | L3 | W12 | W24 | L2 | W10 | L1 | 5 - 3 |
| 9. Palmer, G. | W19 | D22 | D4 | W18 | L14 | W13 | D12 | D11 | 5 - 3 |
| 10. Stani, K. | L22 | W30 | L18 | W15 | W25 | W7 | L8 | W17 | 5 - 3 |
| 11. Celle, O. | W20 | L3 | W27 | W16 | D2 | L5 | D6 | D9 | 4½-3½ |
| 12. Kennedy, E. | L14 | W25 | W13 | L8 | W26 | W23 | D9 | L5 | 4½-3½ |
| 13. Rasis, C. | W30 | L1 | L12 | W28 | W18 | L9 | D23 | W21 | 4½-3½ |
| 14. Weinberger, T. | W12 | L26 | W22 | W17 | W9 | L3 | D2 | L4 | 4½-3½ |
| 15. Geller, S. | W25 | L5 | L16 | L10 | W27 | W29 | W26 | L7 | 4 - 4 |
| 16. Pollard, B. | L17 | W20 | W15 | L11 | D6 | D24 | L7 | W27 | 4 - 4 |
| 17. Stern, C. | W16 | L8 | W32 | L14 | L21 | W28 | W24* | L10 | 4 - 4 |
| 18. Stumbrs, O. | W2 | L24 | W10 | L9 | L13 | W22 | W29 | L6 | 4 - 4 |
| 19. Tupanjanin, R. | L9 | L32 | L28 | W33 | W34* | W31 | L27 | W26 | 4 - 4 |
| 20. Whittemore, R. | L11 | L16 | L29 | L30* | W33 | W32 | W25 | W23 | 4 - 4 |
| 21. Jester, T. | L27 | W33 | L7 | W32 | W17 | L6 | D22 | L13 | 3½-4½ |
| 22. Kern, G. | W10 | D9 | L14 | D7 | L23 | L18 | D21 | W28 | 3½-4½ |
| 23. Thomas, G. | L6 | D7 | W33 | D27 | W22 | L12 | D13 | L20 | 3½-4½ |
| 24. Almgren, S. | W33 | W18 | D1 | L4 | L8 | D16 | L17 | - - | 3 - 5 |
| 25. Fagin, V. | L15 | L12 | W30 | W31 | L10 | L26 | L20 | W32 | 3 - 5 |
| 26. Metz, F. | W28 | W14 | L5 | L1 | L12 | W25 | L15 | L19 | 3 - 5 |
| 27. Piatigorsky, J. | W21 | L2 | L11 | D23 | L15 | D30 | W19 | L16 | 3 - 5 |
| 28. Warnach, J. | L26 | L34 | W19 | L13 | W32 | L17 | W30 | L22 | 3 - 5 |
| 29. Clark, R. | L5 | L31 | W20 | W34 | L7 | L15 | L18 | D30 | 2½-5½ |
| 30. Collins, S. | L13 | L10 | L25 | W20* | D31 | D27 | L28 | D29 | 2½-5½ |
| 31. Ramsey, C. | L4 | W29 | L2 | L25 | D30 | L19 | L32 | W By | 2½-5½ |
| 32. Stampers, T. | L1 | W19 | L17 | L21 | L28 | L20 | W31 | L25 | 2 - 6 |
| 33. Turner, J. | L24 | L21 | L23 | L19 | L20 | W By | - - | - - | 1 - 7 |
| 34. Wood, G. | L8 | W28 | L6 | L29 | L19* | - - | - - | - - | 1 - 7 |

*Forfeit

SOUTH BAY CLUB CHAMPIONSHIP, 1962

| | 1 | 2 | 3 | 4 | 5 | 6 | 7 | Score |
|--------------------|------|-----|-----|-----|------|------|------|-------|
| 1. Johnson, L. | W13 | W16 | W3 | W5 | W10 | W6 | D4 | 6½-½ |
| 2. Debeaubien, A. | D19 | W13 | W10 | W9 | L5 | W11 | W6 | 5½-1½ |
| 3. Bliss, R. | W11 | W20 | L1 | L6 | W8 | W9 | W5 | 5 - 2 |
| 4. Huffman, J. | L6 | W18 | D9 | W20 | W15* | W7 | D1 | 5 - 2 |
| 5. Bagley, R. | W21* | W6 | D15 | L1 | W2 | W10* | L3 | 4½-2½ |
| 6. Wallenhorst, E. | W4 | L5 | W12 | W3 | W7 | L1 | L2 | 4 - 3 |
| 7. Safonov, M. | W17 | L10 | W8 | W16 | L6 | L4 | W12 | 4 - 3 |
| 8. Harter, L. | L17 | W17 | L7 | W12 | L3 | W14 | W11 | 4 - 3 |
| 9. Fels, L. | L15 | W11 | D4 | L2 | W16* | L3 | W18 | 3½-3½ |
| 10. Kohloff | W14 | W7 | L2 | W15 | L1 | L5* | - - | 3 - 4 |
| 11. Gardner, M. | L3 | L9 | W13 | W14 | W17 | L2 | L8 | 3 - 4 |
| 12. Pugh, W. | W18 | L15 | L6 | L8 | W19 | W17* | L7 | 3 - 4 |
| 13. Pinkas, M. | L1 | L2 | L11 | W18 | L14 | W20 | W19* | 3 - 4 |
| 14. Abshear, R. | L10 | W19 | L16 | L11 | W13 | L8 | W20 | 3 - 4 |
| 15. Nusbaum, G. | W9 | W12 | D5 | L10 | L4* | - - | - - | 2½-4½ |
| 16. Larsen, R. | W8 | L1 | W14 | L7 | L9* | - - | - - | 2 - 5 |
| 17. Bishop, R. | L7 | L8 | W18 | W19 | L11 | L12* | - - | 2 - 5 |
| 18. Delacourt, R. | L12 | L4 | L17 | L13 | W20 | W19 | L9 | 2 - 5 |
| 19. Johnson, W. | D2 | L14 | W20 | L17 | L12 | L18 | L13* | 1½-5½ |
| 20. See, L. | By W | L3 | L19 | L4 | L18 | L13 | L14 | 1 - 6 |
| 21. Fether, R. | L5* | - - | - - | - - | - - | - - | - - | 0 - 7 |

VAN NUYS CLUB CHAMPIONSHIP, 1962

| | 1 | 2 | 3 | 4 | 5 | Score | Tie-Br. |
|------------------|-----|-----|-----|-----|-----|-------|---------|
| 1. Parker, S. | W11 | L4 | W8 | W3 | W6 | 4 - 1 | |
| 2. Smith, K. | W9 | L5 | W7 | D6 | W4 | 3½-1½ | 8 3/4 |
| 3. King, K. | W10 | D6 | W5 | L1 | W8 | 3½-1½ | 8 1/4 |
| 4. Levin, J. | D7 | W1 | D6 | W5 | L2 | 3 - 2 | 9 1/2 |
| 5. Levin, H. | W12 | W2 | L3 | L4 | W9 | 3 - 2 | 5 1/2 |
| 6. Myhro, R. | W8 | D3 | D4 | D2 | L1 | 2½-2½ | 6 1/2 |
| 7. Berez | D4 | W10 | L2 | L8 | W12 | 2½-2½ | 3 1/2 |
| 8. Friebergs, A. | L6 | W11 | L1 | W7 | L3 | 2 - 3 | 4 1/2 |
| 9. Snyder | L2 | W12 | L11 | W10 | L5 | 2 - 3 | 2 |
| 10. Lubin | L3 | L7 | W12 | L9 | W11 | 2 - 3 | 2 |
| 11. Steckel, R. | L1 | L8 | W9 | W12 | L10 | 2 - 3 | 2 |
| 12. Kaiser | L5 | L9 | L10 | L11 | L7 | 0 - 5 | |

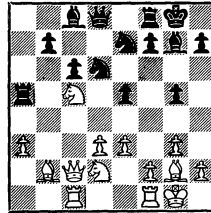
GAME OF THE MONTH

Sammy Reshevsky of Spring Valley, N. Y., took an early lead in the Inter-zonal Playoff being played this month at the Herman Steiner club in Hollywood. The playoff is for third place in the U. S. Championship in which Reshevsky, Larry Evans, and Bill Addison tied behind Bobby Fischer, first place, and Arthur Bisguier, second place. In the first round of the double-round playoff, Reshevsky beat Addison, drew with Evans, and Evans drew with Addison.

In the decisive game, Reshevsky obtained a positional advantage fairly early. Addison gave up a Pawn and then the Exchange hoping for counterplay. At the adjournment Addison had regained some ground and a draw looked possible. In the second session, however, Reshevsky bided his time until he arrived at an end game with two pawns plus and Queens on the board. He then played forcefully and accurately, marched his King up the board to put his opponent into a mating net, and Addison resigned after a total of nine hours of play.

| | <u>Game No. 731</u> | <u>English</u> |
|--------------|---------------------|----------------|
| | White | Black |
| S. Reshevsky | | W. Addison |
| 1. | P-QB4 | Kt-KB3 |
| 2. | Kt-QB3 | P-K4 |
| 3. | P-KKt3 | P-Q4 |
| 4. | PxP | KtxP |
| 5. | B-Kt2 | Kt-K2 |
| 6. | Kt-B3 | QKt-B3 |
| 7. | P-QKt4 | P-QR3 |
| 8. | 0-0 | P-KKt3 |
| 9. | P-QR3 | B-Kt2 |
| 10. | B-Kt2 | 0-0 |
| 11. | P-Q3 | Kt-B4 |
| 12. | P-K3 | Kt-Q3 |
| 13. | Q-B2 | B-B4 |
| 14. | Kt-KR4 | B-Q2 |
| 15. | Kt-R4 | P-KKt4 |
| 16. | Kt-KB3 | P-QR4 |
| 17. | PxP | PxP |
| 18. | Kt-B5 | B-B1 |

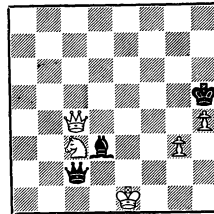
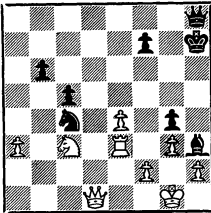
19. Kt-Q2 Kt-K2
20. QR-B1 P-QB3



21. Kt(2)-Kt3 R-R2
22. P-Q4 PxP
23. KtxQP P-Kt3
24. Kt-K4 KtxKt
25. BxKt P-QB4
26. BxPch K-R1
27. Kt-Kt5 BxB
28. QxBch KxB
29. KtxR B-R6

- 30. Q-K2 P-Kt5
- 31. Kt-Kt5 Kt-Kt3
- 32. KR-Q1 Q-R1
- 33. P-K4 Kt-K4
- 34. R-B3 R-Q1
- 35. R-K3 RxRch
- 36. QxR Q-R1
- 37. Kt-B3 Kt-B5

- 52. Kt-B3 QxP
- 53. KxP Q-B4ch
- 54. Q-B4 Q-Q6ch
- 55. Q-K3 B-Kt5ch
- 56. K-B2 Q-B7ch
- 57. K-K1 B-B4
- 58. Q-R7ch K-Kt3
- 59. Q-R6ch K-R4
- 60. QxP B-Q6



- 38. Q-Q7 KtxR
- 39. QxPch K-R3
- 40. Q-B4ch K-Kt3
- 41. QxKt Q-K4
- 42. P-R4 K-Kt2
- 43. Q-Q3 K-R3
- 44. P-B4 Pxp e. p.
- 45. K-B2 B-Kt5
- 46. Q-Q2ch K-Kt3
- 47. Kt-Q5 QxKP
- 48. KtxP B-K3
- 49. P-R5 P-B5
- 50. Kt-R4 Q-B4
- 51. P-R4 K-R2

- 61. Q-Q4 Q-B8ch
- 62. Kt-Q1 Q-R6
- 63. Q-K3 Q-R4ch
- 64. K-B2 B-R3
- 65. K-Kt1 K-Kt3
- 66. Kt-B2 Q-R8ch
- 67. K-R2 Q-R7
- 68. P-Kt4 K-Kt2
- 69. K-Kt3 Q-R8
- 70. Q-K7ch K-Kt1
- 71. Kt-K4 Q-Kt8ch
- 72. K-B4 Q-QB8ch
- 73. K-B5 Resigns

EDITORIAL

by Neil T. Austin, Associate Editor

When the California State Chess Federation was first formed several years ago, the writer strongly favored two separate groups with coordination at the top only. Reasoning that the two strong chess centers were 400 miles apart, with a great gap between where there was no organized chess, it was felt that this was the only practical way to proceed. After several years of harmonious operation, it seemed that this stand had been unduly pessimistic. Regrettably, it appears that the argument had no substance after all.

The present operation of the CSCF is faulty in many ways, but if one remembers the chess situation as recently as 15 years ago, it will be seen that we have come a long way. Previous to World War II, there were no organized leagues, no Open, and only an occasional State Championship. The North-South Match was practically the only common ground between the North and the South, and one either had to know Herman Steiner or be a member of Mechanics' Institute to be invited to this event.

The improvement in the organization of California Chess can be attributed to the CSCF. Of this there is little doubt. To say the least, it seems short-sighted to jettison the organization which has accomplished so much. It would seem better to recognize the faults of the present organization and make a conscientious effort toward improvement.

First, the State Open Championship. This has been a highly successful event, and most complaints have been of a minor nature. A split in the Federation would do more harm than good to this event. One possible improvement here might be to have a committee, including the Director, to examine complaints from the previous year, correcting them if possible.

Second, the North-South Match. Historically, this is the tie that binds the State. When there was no other contact, Northern and Southern players met here and ultimately developed a workable organization. This event would probably lend itself to a split organization better than any other, but only if the South will realize its responsibilities. Too often the North has left a better team at home and still won overwhelmingly. Does the South depend solely on its imported masters, or does it lack the players of "club" strength who are so important in this type of match? More probable is a lack of effort to get the good "club" player out. It would be tragic if the

combination of a Federation split and a few more South defeats should result in the demise of this historic event.

Third, the State Championship. Surprisingly, this event has usually produced a worthy Champion. Many think that this is purely by accident. The method of qualification is open to question, as many areas have no practical means to qualify an entry to the finals. The field in the finals is too large, making it necessary to play several games ahead of time. The North has been very remiss in sending its better players when the finals were held in Los Angeles. Qualification should be by areas rather than by leagues. Each area should be allowed a representative into a qualifying tournament, either semi-final or quarter-final. A small enough number should be qualified into the final event to assure its being played off at one time. This would allow the outlying areas a chance to qualify players without discriminating against the probable greater strength in the metropolitan areas. The old method of requiring that a player post a forfeit fee should be resumed.

Fourth, Membership. The membership is largely concentrated in the large centers, together with the cities whose clubs belong to leagues. No real effort has ever been made to attract players from other areas, such as industrial clubs, or smaller out-of-the-way cities, i. e. Eureka, Brawley, Bishop. An effort should be made to get a mailing list from Chess Review, together with a list of California members of USCF, with the idea of canvassing these players for Federation membership. Of course, a program must be offered, which will be attractive to members from these localities.

Fifth, Organization. This is the all-important point, and the area of present disagreement. The present organization is of a democratic type, with representation by leagues. The annual meeting, held before the North-South Match, is open to all. Unfortunately, non-league players do not join, and the annual meetings might be termed a farce. This meeting should be replaced by a Director's Meeting, which would accomplish more and consume less time. The Directors should be chosen by areas rather than by leagues. Tentatively, such a board might be chosen as follows:

Los Angeles Metropolitan (3), San Diego-Imperial (1), San Bernardino-Inyo (1), Santa Barbara-San Luis Obispo (1), Salinas-Monterey (1), Fresno-Tulare-Kern (1), Central Valley (1), North Coast (1), Northern Calif. (Redding) (1), Bay Area (2). These directors should be

elected by their own area players, not by the league as at present.

If the Southern group feels that better results will be attained by two autonomous federations, it could be accomplished by the formation of Northern and Southern associations. These associations would form the CSCF with three (3) directors each, at least one being from outside each metropolitan area. Complete domination by the metropolitan areas would be a step backward into the dark ages of California Chess.

Lastly, the Reporter. This organ has lasted longer than any previous California chess publication, largely because of the efforts of the present editor. If the Southern Californians believe that they can improve upon it for any length of time, the writer feels that they will be sadly mistaken. This is a labor of love, and an editor can be very easily discouraged. However, there should be definite publication dates; if nothing else, a program of future events should be published. This would require the cooperation of a great many league and tournament officials, together with Associate Editors of whom the writer is one.

To recapitulate briefly, there are 3 important events sponsored by the CSCF, none of which would be helped by the sacking of the State-wide organization. The Open needs little improvement, the North-South Match needs improvement but the effort must come from the South, and the State Championship should be revamped. There should be an effort to attract new members, and the organization can stand a complete overhaul, but to break it up would be short-sighted.

The President should appoint a committee of five (5) to consider complaints and to recommend changes in the present organization. Recommended for this committee are Henry Gross and Guthrie McClain from the North, and Irving Rivise and George Goehler from the South as men who have known California chess from the old days, together with Major Edmondson of Sacramento, who has had experience with the organization of Chess in Texas, and in his capacity as a USCF Vice President should be able to moderate the discussion.

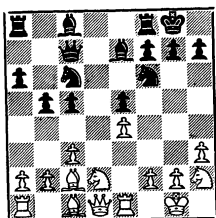
G A M E S

INTERZONAL PLAYOFF, 1963

Game No. 732 Ruy Lopez

White Black
L. Evans W. Addison

- | | | |
|-----|--------|--------|
| 1. | P-K4 | P-K4 |
| 2. | Kt-KB3 | Kt-QB3 |
| 3. | B-Kt5 | P-QR3 |
| 4. | B-Kt5 | Kt-B3 |
| 5. | 0-0 | B-K2 |
| 6. | R-K1 | P-QKt4 |
| 7. | B-Kt3 | P-Q3 |
| 8. | P-B3 | 0-0 |
| 9. | P-KR3 | Kt-QR4 |
| 10. | B-B2 | P-B4 |
| 11. | P-Q4 | Q-B2 |
| 12. | QKt-Q2 | Kt-B3 |
| 13. | PxBP | PxP |
| 14. | Kt-R2 | B-K3 |



- | | | |
|-----|-------|--------|
| 15. | QKt-B | KR-Q1 |
| 16. | Q-B3 | Kt-Q2 |
| 17. | Kt-K3 | Kt-Q5 |
| 18. | Q-Kt3 | KtxB |
| 19. | KtxKt | Kt-B1 |
| 20. | Kt-K3 | Kt-Kt3 |
| 21. | Kt-B5 | B-KB1 |

- | | | |
|-----|--------|-------|
| 22. | Kt-Kt4 | P-B3 |
| 23. | P-KR4 | K-R1 |
| 24. | P-R5 | Kt-K2 |
| 25. | KtxKt | QxKt |
| 26. | P-KB4 | Q-KB2 |
| 27. | P-R6 | PxBP |
| 28. | QxP | Q-Kt3 |
| 29. | PxPch | BxP |
| 30. | Kt-B2 | B-KB1 |
| 31. | B-K3 | B-Q3 |
| 32. | Q-B3 | B-K4 |
| 33. | KR-Q1 | Drawn |

Game No. 733 Ruy Lopez

White Black
L. Evans S. Reshevsky

(First 14 moves as in No. 732)

- | | | |
|-----|--------|--------|
| 14. | ... | Kt-Q1 |
| 15. | P-QR4 | R-Kt1 |
| 16. | PxP | PxP |
| 17. | QKt-B1 | Kt-K3 |
| 18. | Q-B3 | R-Q1 |
| 19. | Kt-Kt4 | KtxKt |
| 20. | PxKt | B-Kt2 |
| 21. | Kt-K3 | Kt-Kt4 |
| 22. | Q-K2 | P-Kt3 |
| 23. | QxP | BxP |
| 24. | Q-K2 | BxB |
| 25. | KtxB | Kt-K3 |
| 26. | P-KKt3 | B-Kt4 |
| 27. | Kt-K3 | Q-Kt2 |
| 28. | P-B3 | BxKtch |
| 29. | QxB | P-B5 |
| 30. | R-R7 | Q-Q4 |
| 31. | K-Kt2 | Q-B4 |
| 32. | R-K2 | R-Q8 |
| 33. | QxQ | KtxQ |

| | | |
|--------------|-------------|--------|
| 34. | B-Kt5 | K-Kt2 |
| 35. | B-K7 | Kt-Q6 |
| 36. | P-Kt5 | P-R4 |
| 37. | PxPe. p. ch | KxP |
| 38. | B-B6 | R-QKt8 |
| 39. | RxBP | R(8)xP |
| 40. | B-Kt7ch | K-Kt4 |
| 41. | RxR | RxRch |
| 42. | K-B | K-R4 |
| Draw agreed. | | |

| | | |
|----------------|---------|--------|
| 19. | QxKt | Q-Q5ch |
| 20. | Kt-B2 | QxP |
| 21. | Kt-Q2 | Q-Kt2 |
| 22. | Kt-B3 | B-Q2 |
| 23. | QR-Kt1? | QR-K1 |
| 24. | Q-Q2 | Kt-K6 |
| And Black won. | | |

| | | |
|--------------|--|----------|
| Game No. 735 | | K's Ind. |
| White | | Black |
| W. Addison | | R. Hoppe |

CALIF. CHAMPIONSHIP, 1962

| | | |
|--------------|--|---------------|
| Game No. 734 | | Vienna |
| White | | Black |
| S. Yarmak | | W. Cunningham |

1. P-K4 P-K4
 2. B-B4 Kt-QB3
 3. P-B4 PxP
 4. Kt-KB3 Kt-KB3
 5. P-K5 P-Q4
 6. B-Kt5 Kt-KR4

5. P-K5 and 6. B-Kt5 are only super-
 ficially attacking moves. Black gains
 equality because White must waste
 time regaining the Pawn.

| | | |
|-----|---------|---------|
| 7. | P-Q4 | B-K2 |
| 8. | 0-0 | 0-0 |
| 9. | Kt-K1 | P-KKt3 |
| 10. | B-K2 | Kt-Kt2 |
| 11. | BxP | P-KB3 |
| 12. | KKt-B3? | P-KKt4! |
| 13. | PxP | BxP |
| 14. | B-K5 | Kt-B4 |
| 15. | Q-Q2 | P-Kt5 |
| 16. | BxB | QxB |
| 17. | Kt-K5 | QKtxP |
| 18. | KtxP | KtxBch |

| | | |
|-----|----------|--------|
| 1. | P-Q4 | Kt-KB3 |
| 2. | P-QB4 | P-KKt3 |
| 3. | Kt-QB3 | B-Kt2 |
| 4. | P-K4 | P-Q3 |
| 5. | P-B3 | 0-0 |
| 6. | B-K3 | P-K4 |
| 7. | P-Q5 | P-B3 |
| 8. | Q-Q2 | PxP |
| 9. | BPxP | P-QR3 |
| 10. | 0-0-0 | P-QKt4 |
| 11. | K-Kt1 | QKt-Q2 |
| 12. | R-B1 | Kt-K1 |
| 13. | B-Q3 | Kt-B4 |
| 14. | B-QB2 | P-B4 |
| 15. | KKt-K2 | B-Q2 |
| 16. | P-QKt4!? | Kt-R5 |
| 17. | KtxKt | PxKt |
| 18. | B-Q3 | Kt-B3 |
| 19. | P-QR3 | PxP |
| 20. | PxP | Kt-Kt5 |
| 21. | Kt-B3 | KtxB |
| 22. | QxKt | B-KB3 |
| 23. | KR-B1 | B-Kt4 |
| 24. | RxRch | KxR |
| 25. | B-B1ch | K-Kt2 |
| 26. | Q-B2 | Q-B2! |
| 27. | Q-B7ch | K-R1 |

- | | | | |
|--------------------------|---------|-------------|----------|
| 28. KtxP | R-QB1 | 7. Kt-B2 | Q-Q2 |
| 29. Kt-Kt2 | B-Kt4 | 8. 0-0 | Kt-B3 |
| 30. QxQ | RxQ | 9. Kt-B3 | Kt-K4 |
| 31. P-QR4 | BxBch | 10. P-Kt3 | B-Q3 |
| 32. KtxB | R-B5 | 11. B-Kt2 | 0-0 |
| 33. P-Kt5 | PxP | 12. P-Q4 | PxPe. p. |
| 34. PxP | B-K6 | 13. PxP | P-B5 |
| 35. R-B6 | RxP | 14. P-Q4 | Kt-B2 |
| 36. RxQP | R-Q5 | 15. P-Q5 | Kt-Kt4 |
| 37. KtxP | R-Kt5ch | 16. Kt-Q4 | Q-B2 |
| 38. K-B2 | RxP | 17. Q-Q3 | Q-R4 |
| 39. R-Q7 | B-B5 | 18. P-KR4 | Kt-R6ch |
| 40. Kt-Kt4 | P-R4 | 19. K-R1 | KtxPch |
| 41. Kt-B6 | R-B5ch | 20. RxKt | PxP |
| 42. K-Q3 | R-B6ch | 21. R-B3 | QxPch |
| 43. KxR | B-K4ch | 22. K-Kt1 | B-KKt5 |
| 44. K-B4 | BxKt | 23. QKt-K2 | Q-R7ch |
| 45. R-KB7 and White won. | | 24. K-B1 | Kt-Q2 |
| | | 25. Kt-Kt1 | Kt-K4 |
| | | 26. Q-B3 | BxR |
| | | 27. Kt(4)xB | R-B2 |
| | | 28. Q-K3 | KtxKt |
| | | 29. KtxKt | QR-KB |
| | | 30. Q-K6 | B-B4 |
| | | 31. B-B6 | Q-R3 |
| | | 32. R-K1 | QxB |
| | | 33. QxQ | RxQ |
| | | 34. K-K2 | RxKt |
| | | 35. BxR | P-Kt7 |
| | | 36. BxP | R-B7ch |
| | | | Resigns |

HERMAN STEINER CLUB, 1963

| <u>Game No. 736</u> | <u>Reti</u> |
|---------------------|---------------|
| White | Black |
| J. Hanken | T. Weinberger |
| 1. P-KKt3 | P-KB4 |
| 2. P-QB4 | P-K4 |
| 3. B-Kt2 | Kt-KB3 |
| 4. Kt-KB3 | P-K5 |
| 5. Kt-Q4 | P-Q4 |
| 6. PxP | QxP |

THIRD ANNUAL HAMILTON A. F. B. OPEN

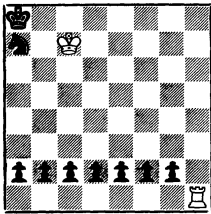
April 26-28, 1963

Entry Fee: \$10 Prizes: 1-\$125, 2-\$75, 3-\$50, plus "A", "B", "C" prizes. (Based on 40 entries)

Six-Round Swiss: Round 1, 7:30 P. M. April 26: 40 moves/1½ hours
 Rounds 2, 3, 4, April 27: 40 moves/1½ hours
 Rounds 5, 6 April 28: 50 moves/2 hours

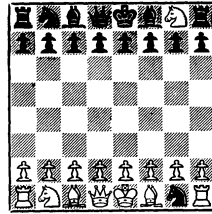
TASKS: In both problems the number of different series of moves has to be found. Series of moves are considered to differ when they differ from one another in some very small respect, e. g., in sequence of moves or promotion of pawns.

TASK No. 202
Olavi Riihimaa



Help stalemate in 7 moves.
How many different solutions?
(Black plays and helps White with his seventh move to stalemate Black.)

TASK No. 203
Eero Bonsdorff



How many different sequences are there of the shortest series of moves leading from the initial position to the diagram position, in which both sides have lost their right of castling on the Queen's side?

Mail solutions to: THE CALIFORNIA CHESS REPORTER
244 Kearny Street - 4th Floor
San Francisco 8, California