

THE CALIFORNIA CHESS REPORTER

Vol. XIII, No. 2

\$2 per year

September, 1963

THE CALIFORNIA CHESS REPORTER, 244 Kearny Street, San Francisco 8

Monthly except January, March, August, and October

Official Organ of the California State Chess Federation

Editor: Guthrie McClain

Associate Editors: Gordon S. Barrett, Los Angeles; Dr. Mark W. Eudey, Berkeley;

Neil T. Austin, Sacramento; Irving Rivise, Los Angeles

Games Editor: Robert E. Burger

Guest Annotator: Intl. Master Imre Konig

Second-class postage paid at San Francisco, California

CONTENTS

California Open.....	2-4	Amateur Tourney, So. Cal.	11
Southern Calif. Open.....	5	A Proposal on Draws.....	12
Bernard Oak Memorial.....	6	Pacific Southwest Open.....	13
Westchester Open.....	6	Game Of The Month.....	14
Central Calif. Open.....	7	Games.....	15
Southern Calif. Championship.	11	Tasks.....	16
New Books and Reviews on Problem Literature....		16	

SOUTHERN CALIFORNIA OPENS THE GUNS

As if the Piatigorsky Cup Tournament were not enough, the organizers of competitive chess in Southern California have opened the floodgates of chess activity during the Summer and Fall months of 1963. The tourney results in this issue are proof enough of the great enthusiasm of players and promoters in the South. Meanwhile, the North has produced only the customary qualifying tournaments and club championships.

Only the most partisan can deny that the swing is to the south. Even the North-South match is now a favorite of the "Angelinos" and former northern players are conspicuous by their activity in Southern California tournaments.

Possibly this burst of energy will also be reflected in the north, where younger tournament organizers are coming to the fore. Besides playing in almost every tournament going, Hoppe and Sutherland and Wilkerson and many others are now organizing. Youth will be served!

RIVISE NEW CALIFORNIA OPEN CHAMPION

One of California's most consistent players has again found his way to the top with a convincing victory in the "Open". The Labor Day weekend event was not the largest in its history, but one of the strongest, as such regulars as Almgren, Foley, Schmitt, Henry Gross, Loftsson, Weinberger, Ronnie Gross, Hoppe, and Blackstone were challenged by several new experts. Henin, who must be considered among the favorites in any event he enters in the state, was stopped by R. Walker and Max Wilkerson; Art Wang, back again in San Francisco after a stint in the Army, lost only to Thacker. The competition was strong enough to put a respectable $4\frac{1}{2}$ - $2\frac{1}{2}$ score in 24th place.

Going into the final round, Rivise had allowed only a draw, and was paired with Addison, who had given up 2 draws. Addison played aggressively, castling long on the White side of a Queen's Gambit, but Rivise freed his game effectively and had slightly the better of the ending when a draw was agreed to. Meanwhile, Weinberger and Loftsson drew level with Rivise by beating R. Walker and Schmitt, respectively. Three of Rivise's earlier victims, H. Gross, R. Gross, and Blackstone were winning their last round games for equal $5\frac{1}{2}$ - $1\frac{1}{2}$ scores, thus contributing to Rivise's tie-breaking total that made him the clear Champion.

There were no great surprises other than those mentioned above, and the excellent showing of Fred Metz, who tied at 9-11 with a 5-2 score. His USCF rating is 1799 — prior to the tournament!

Tournament Director Gordon Barrett reports that players were well pleased with conditions, including the outlawing of rapid transit in the tournament room, and a special analysis room for skittles. A Reserve Section was voted down, but the Reserves Trophy was awarded to Sleep on the basis of best score after Round 4, after a minus score. The competition of other events held on the same weekend did not diminish the number of participants appreciably, but the number can be improved. Prizes were distributed to 20 players, with \$133.33 going to each of the co-winners. Charles Savery was assistant tournament director.

PLAYER	CALIFORNIA OPEN, FRESNO 1963							SCORE	T-B
	1	2	3	4	5	6	7		
1. I. Rivise	W57	D20	W29	W8	W6	W5	D4	6-1	25
2. T. Weinberger	W35	W42	D8	W14	W15	D3	W9	6-1	23 $\frac{1}{2}$
3. J. Loftsson	W73	W77	W18	D13	W23	D2	W12	6-1	20

THE CALIFORNIA CHESS REPORTER

4. W. Addison	W38 W26 W25 D5 D13 W19 D1	$5\frac{1}{2}-1\frac{1}{2}$	$22\frac{1}{2}-32$
5. H. Gross	W45 W53 W28 D4 W9 L1 W14	$5\frac{1}{2}-1\frac{1}{2}$	$22\frac{1}{2}-31\frac{1}{2}$
6. J. Blackstone	D79 W31 W24 W12 L1 W27 W23	$5\frac{1}{2}-1\frac{1}{2}$	$21\frac{1}{2}$
7. A. Wang	W67 L17 W36 W41 W16 D18 W22	$5\frac{1}{2}-1\frac{1}{2}$	21
8. R. Gross	W44 W50 D2 L1 W54 W42 W18	$5\frac{1}{2}-1\frac{1}{2}$	$20\frac{1}{2}$
9. R. Walker	W84 W39 W33 W10 L5 W25 L2	5 - 2	22
10. C. Henin	W62 W27 W16 L9 L18 W43 W26	5 - 2	$20\frac{1}{2}$
11. F. Metz	W30 L14 W44 L26 W39 W33 W25	5 - 2	20
12. J. Schmitt	W34 W21 D14 L6 W28 W13 L3	$4\frac{1}{2}-2\frac{1}{2}$	23-33
13. R. Hoppe	W59 W37 W17 D3 D4 L12 D16	$4\frac{1}{2}-2\frac{1}{2}$	23-32
14. J. Mortz	W47 W11 D12 L2 W51 W40 L5	$4\frac{1}{2}-2\frac{1}{2}$	22
15. Batchelder	W52 W58 W20 D19 L2 L23 W30	$4\frac{1}{2}-2\frac{1}{2}$	$20\frac{1}{2}-29\frac{1}{2}$
16. V. Radaikin	W46 W43 L10 W35 L7 W47 D13	$4\frac{1}{2}-2\frac{1}{2}$	$20\frac{1}{2}-29\frac{1}{2}$
17. R. Thacker	W69 W7 L13 L25 W44 W31 D19	$4\frac{1}{2}-2\frac{1}{2}$	$20\frac{1}{2}-28\frac{1}{2}$
18. M. Wilkerson	W78 W82 L3 W59 W10 D7 L8	$4\frac{1}{2}-2\frac{1}{2}$	$20\frac{1}{2}-27\frac{1}{2}$
19. D. Foley	W86 D28 W54 D15 W26 L4 D17	$4\frac{1}{2}-2\frac{1}{2}$	20
20. M. Bedford	W56 D1 L15 W24 L40 W51 W46	$4\frac{1}{2}-2\frac{1}{2}$	19-28
21. Moore	W63 L12 D52 W34 W30 L22 W40	$4\frac{1}{2}-2\frac{1}{2}$	$19-26\frac{1}{2}$
22. S. Almgren	W68 D24 D51 D38 W50 W21 L7	$4\frac{1}{2}-2\frac{1}{2}$	$18\frac{1}{2}-26\frac{1}{2}$
23. B. Kakimi	D53 W45 W79 W77 L3 W15 L6	$4\frac{1}{2}-2\frac{1}{2}$	$18\frac{1}{2}-26$
24. Sleep	W85 D22 L6 L20 W78 W74 W42	$4\frac{1}{2}-2\frac{1}{2}$	16
25. E. Wicher	W72 W41 L4 W17 W29 L9 L11	4 - 3	22
26. R. Myhro	W83 L4 W56 W11 L19 W59 L10	4 - 3	$20\frac{1}{2}$
27. T. Lux	W48 L10 W46 D40 W32 L6 D34	4 - 3	20-20
28. T. Bullockus	W32 D19 L5 W52 L12 W67 D36	4 - 3	20-28
29. J. McIlrath	W31 W49 L1 W79 L25 D36 D32	4 - 3	$19\frac{1}{2}-27$
30. E. Warner	L11 W47 W70 W39 L21 W38 L15	4 - 3	$19\frac{1}{2}-27$
31. G. Castleberry	L29 L6 W64 W57 W35 L17 W59	4 - 3	$18\frac{1}{2}-27$
32. W. Adams	L28 D72 W45 W37 L27 W54 D29	4 - 3	$18\frac{1}{2}-24\frac{1}{2}$
33. S. Weinbaum	W61 W55 L9 D51 D38 L11 W41	4 - 3	18
34. B. Allen	L12 D63 W75 L21 W55 W58 D27	4 - 3	$17\frac{1}{2}$
35. Gish	L2 W81 W58 L16 L31 W79 W64	4 - 3	16
36. Carr	L50 W86 L7 W82 W62 D29 D28	4 - 3	15-21
37. G. Rasmussen	W80 L13 D50 L32 D52 W72 W61	4 - 3	$15-20\frac{1}{2}$
38. Levin	L4 W71 W60 D22 D33 L30 D48	$3\frac{1}{2}-3\frac{1}{2}$	19-27
39. Zangerle	W65 L9 W43 L30 L11 D52 W57	$3\frac{1}{2}-3\frac{1}{2}$	19-27
40. Barrios	L41 W68 W74 D27 W20 L14 L21	$3\frac{1}{2}-3\frac{1}{2}$	$19\frac{1}{2}-25\frac{1}{2}$
41. Robinson	W40 L25 W62 L7 D46 W53 L33	$3\frac{1}{2}-3\frac{1}{2}$	$18-26\frac{1}{2}$
42. MacCartney	W81 L2 D55 W53 W73 L8 L24	$3\frac{1}{2}-3\frac{1}{2}$	$18-25\frac{1}{2}$
43. Jester	W76 L16 L39 W61 W48 L10 D47	$3\frac{1}{2}-3\frac{1}{2}$	$18-24\frac{1}{2}$
44. Shields	L8 W85 L11 W69 L17 W60 D53	$3\frac{1}{2}-3\frac{1}{2}$	$18-24\frac{1}{2}$

THE CALIFORNIA CHESS REPORTER

Calif. Open	1	2	3	4	5	6	7	Score	T-B
45. Barlow	L5	L23	L32	W65	W66	D56	W74	3½-3½	17½
46. Miller	L16	W76	L27	W74	D41	W50	L20	3½-3½	17
47. H. Rader	L14	L30	W80	W85	W70	L16	D43	3½-3½	15½
48. Rains	L27	L51	W86	W60	L43	W70	D38	3½-3½	14½
49. T. Byrne	D54	L29	W72	L50	L53	W78	W67	3½-3½	13½
50. W. Sanders	L22	L40	W65	L67	D80	W55	W81	3½-3½	13½-19
51. H. Byrne	W36	L8	D37	W49	L22	L46	D63	3 - 4	20½
52. H. Edelstein	D64	W48	D22	D33	L14	L20	D55	3 - 4	19½
53. T. Layfield	L15	W66	D21	L28	D37	D39	D58	3 - 4	19
54. Goodall	D23	L5	W82	L42	W49	L41	D44	3 - 4	18½
55. R. Freeman	D49	W64	L19	W55	L8	L32	D56	3 - 4	18
56. A. Wicher	L20	W57	L26	L62	W84	D45	D54	3 - 4	16½-22
57. L. Post	L1	L56	W83	L31	W69	W63	L39	3 - 4	16-23
58. E. Lien	W66	L15	L35	D78	W75	L34	D52	3 - 4	16-22
59. Gaylor	L13	W80	W84	L18	W77	L26	L31	3 - 4	15½
60. Dr. B. Gross	L55	W61	L38	L48	W71	L44	W75	3 - 4	15-21
61. C. Ulrich	L33	L60	W85	L43	W79	W62	L37	3 - 4	15-20
62. R. Cuneo	L10	W83	L41	W56	L36	L61	W82	3 - 4	14½-20½
63. W. Irwin	L21	D34	D73	W84	D67	L57	D50	3 - 4	14½-20
64. Tait	D51	L54	L31	D72	W86	W73	L35	3 - 4	14
65. W. Allen	L39	L84	L68	L45	W76	W82	W73	3 - 4	10½-15
66. Clark	L58	L52	L78	W86	L45	W83	W72	3 - 4	10½-14½
67. J. Zizda	L7	L69	W81	W68	D63	L28	L49	2½-4½	15½
68. Sword	L17	W67	L77	L44	L57	W85	D70	2½-4½	13½-19
69. Andreini	L82	W78	L30	W71	L47	L48	D69	2½-4½	13½-18½
70. L. O'Doan	L74	L38	W76	L70	L60	D75	W83	2½-4½	11
71. Jaeger	L25	D32	L49	D64	W82	L37	L66	2 - 5	17½
72. Bobo	W60	L33	D42	L54	L34	L68	D51	2 - 5	16½-23
73. D. Walker	L3	D75	D63	W80	L42	L64	L65	2 - 5	14½-21½
74. C. Wilson	W71	L79	L40	L46	W83	L24	L45	2 - 5	14½-20
75. Mongan	L77	D73	L34	W81	L58	D71	L60	2 - 5	12½
76. Ray Walker	L43	L46	L71	L83	L65	W86	W78	2 - 5	11½
77. G. Rubin	W75	L3	W69	L23	L59	---	---	2 - 5	10
78. Enrione	L18	L70	W66	D58	L24	L49	L76	1½-5½	17½
79. Salter	D6	W74	L23	L29	L61	L35	---	1½-5½	15½
80. D. Mortz	L37	L59	L47	L73	D68	L81	W85	1½-4½	12½
81. McKenzie	L42	L35	L67	L75	D85	W80	L68	1½-4½	11½
82. L. Legler	W70	L18	L53	L36	L72	L65	L62	1 - 6	15½
83. C. Fotias	L26	L62	L57	W76	L74	L66	L71	1 - 6	13½
84. W. Rebold	L9	W65	L59	L63	L56	---	---	1 - 6	9
85. Renck	L24	L44	L61	L47	D81	L69	L80	½ - 6½	
86. Orem	L19	L36	L48	L66	L64	L76	---	0 - 7	

BENKO WINS SOUTHERN CALIFORNIA OPEN, SANTA MONICA, 1963

Needing only a draw to clinch first place, Grandmaster Pal Benko got it from Steve Matzner in the last round for the Trophy and \$225. Unfortunately, six rounds were not sufficient for more than 2 of the top 6 to meet Benko, but the victory was well-deserved. An even 100 participated. Plus scores:

PLAYER	1	2	3	4	5	6	SCORE
1. P. Benko	W59	W25	W9	W7	W5	D2	5½-½
2. Matzner	W64	W37	W21	W6	D3	D1	5 - 1
3. Addison	W86	W65	W11	D4	D2	W24	5 - 1
4. Weinberger	W57	W38	W12	D3	D22	W17	5 - 1
5. Lessing	W47	W76	W56	W29	L1	W22	5 - 1
6. Rivise	W55	W49	W23	L2	W43	W20	5 - 1
7. Loftsson	W27	W26	W17	L1	D16	W38	4½-1½
8. Simon	W51	D19	W48	D22	W25	D12	4½-1½
9. Hanken	W84	W50	L1	W21	D34	W31	4½-1½
10. Schmitt	W46	W30	L22	D38	W52	W23	4½-1½
11. E. Wicher	W28	W72	L3	W49	D31	W30	4½-1½
12. Almgren	W71	W68	L4	W76	W28	D8	4½-1½
13. Coles	W69	W77	L29	D40	D55	W62	4 - 2
14. G. Gross	W74	L31	W72	L62	W59	W50	4 - 2
15. Jacobs	W35	D48	D31	W26	L17	W44	4 - 2
16. Kennedy	W88	D20	W86	D31	D7	D32	4 - 2
17. Kupersmith	W54	W75	L7	W18	W15	L4	4 - 2
18. Larsen	W92	L23	W60	L17	W75	W43	4 - 2
19. Lux	W80	D8	L20	D63	W77	W42	4 - 2
20. Martin	W63	D16	W19	D52	W62	L6	4 - 2
21. Moore	W53	W24	L2	L9	W74	W52	4 - 2
22. Mortz	W94	W61	L10	D8	D4	L5	4 - 2
23. Noland	W42	W18	L6	W50	W29	L10	4 - 2
24. Quillen	W33	L21	W46	W37	W44	L3	4 - 2
25. Radakin	W78	L1	W57	W75	L8	W47	4 - 2
26. Restreppo	W91	L7	W33	L15	W63	W55	4 - 2
27. H. Rogosin	L7	W93	L49	W79	W56	W65	4 - 2
28. Salter	L11	W53	W66	W65	L12	W49	4 - 2
29. Sholomson	W83	W41	W13	L5	L23	W34	4 - 2

At 3½-2½:

Alza, Currie, R. Gross, Katzl, Kempner, Maron, Mego, Miltner, and Wilkerson.

CONWIT WINS BERNARD OAK MEMORIAL - CITY TERRACE, 1963

Needing a victory in the last round to overtake the leader, Dave Conwit turned the trick to post an undefeated score of 6-1. Yarmak's last round loss dropped him to a second-place tie with Lazos, $\frac{1}{2}$ point behind. An interesting feature of the tournament was the last-round game between Katzl and N. Hultgren, which was adjourned after $8\frac{1}{2}$ of play (!), later won by Katzyl to give him the "A" Prize. The plus scores:

PLAYER	1	2	3	4	5	6	7	SCORE
1. D. Conwit	W26	W7	W27	D4	D9	W6	W2	6 - 1
2. S. Yarmak	W24	<u>W23</u>	W18	D8	W5	W4	L1	$5\frac{1}{2}-1\frac{1}{2}$
3. J. Lazos	D27	W21	L5	<u>W16</u>	W24	W8	W10	$5\frac{1}{2}-1\frac{1}{2}$
4. S. Matzner	W17	W19	W15	D1	W8	L2	D5	5 - 2
5. T. Saidi	D30	W20	W3	W10	L2	W15	D4	5 - 2
6. A. Troy	W22	W12	L8	W14	W7	L1	W11	5 - 2
7. R. Katzl	W13	L1	W30	W18	L6	W23	W15	5 - 2
8. G. Barrett	W25	W9	W6	D2	L4	L3	W16	$4\frac{1}{2}-2\frac{1}{2}$
9. E. Barrios	W11	L8	W12	W23	D1	L10	W18	$4\frac{1}{2}-2\frac{1}{2}$
10. C. Marin	D20	W30	W17	L5	W19	W9	L3	$4\frac{1}{2}-2\frac{1}{2}$
11. H. Keeseey	L9	W25	W33	L27	W14	W12	L6	4 - 3
12. R. Gish	W28	L6	L9	W25	W31	L11	W17	4 - 3
13. Dr. J. Marin	L7	L26	L25	W35	W32	W31	W23	4 - 3
14. J. Kovac	L36	W35	W28	L16	L11	W27	W26	4 - 3

WESTCHESTER CLUB CHAMPIONSHIP, 1963

R. Larsen met his nearest rivals head-on, winning from J. Huffman and Dr. Bullockus and drawing with W. Maillard for a $5\frac{1}{2}-\frac{1}{2}$ winning score in the annual 6-round Club Tournament. Twenty players competed in the Swiss event. Huffman was a clear second at 5-1; Maillard third at $4\frac{1}{2}-1\frac{1}{2}$; and fourth to seventh place were Dr. T. Bullockus, Wildschutz, Stempel, Stolpe at 4-2. Maillard also won the handicap prize.

FRED HAEGER

Fred Haeger had retired from chess activities in recent years, but his accomplishments are well-remembered by California players throughout the state.

Fred was an Officer of the State Federation in its infancy and participated in every major state event. In Southern California he is best known for his leadership of the San Gabriel Chess Club. He will be remembered not only as a chessplayer and organizer, but as friend and gentleman.

CENTRAL CALIFORNIA OPEN

A grand total of 84 entrants converged on Sacramento, September 13-15, to break all previous records for this 5-round Swiss event.

The Central California Chess League, with the concurrence of the California State Chess Federation, made their tournament an Open for the first time. The highest-finishing California resident qualified to play in the State Championship; a liberal prize fund was guaranteed, with awards slated for players of all classes; entry fees varied according to strength; and entrants who signed up at least two weeks in advance were given first-round pairings against opponents who lived near them, thereby saving Friday night travel problems and possibly a night's hotel expense. Whether these innovations encouraged success or whether people are just eager to play chess, we don't know -- but a heck of a gang was in attendance and most of them had fun!

Three players had four wins and a draw and tied for the Open Championship. They were (in order of tie-break) Duncan Suttles, Reno, Nevada; Max Wilkerson, San Francisco; and Serge von Oettingen, Davis. Wilkerson qualified to play in the State Championship, with von Oettingen as alternate. Each of the three received \$80 in prize money.

Close behind with 4-1 scores were (in tie-break order) Mark Eucher, Berkeley; Henry Gross, San Francisco; John Blackstone, Saratoga; Lt. Edward Silverbush, McClellan Air Force Base; Roy Hoppe, Novato; George Kirby, Crystal Bay, Nevada; George Kane, Redwood City; Arthur Wang, Berkeley; Dr. J. K. Walters, Berkeley; and Ostap Bender, Sacramento. The three Juniors -- Blackstone, Hoppe, and Kane -- split \$41.25, while the others pocketed \$11.25 each.

In every one of the five rounds, a special \$10 award went to the underdog who scored the biggest upset win (based upon pre-tournament rating point spreads). Round 1 saw the biggest upset of the entire tournament when Robert Oyler of Antioch downed Frank Olvera, Pittsburg; in Round 2, Tom Harris of Reno surprised Capt. Chris Velasaron, McClellan AFB; Round 3 saw Mike Goodall of San Rafael pull a swifty against Ervin Underwood, Palo Alto; and Oyler came through again in the last two rounds against Marshall McLellan, Burlingame, and Bud Eaton, Vallejo!

These upset awards are great incentives to the under-rated player or to the tournament newcomer who is on the upgrade. This was only the third rated event for Bob Oyler, who had previously scored two draws, seven losses, and no wins in the Hamilton and Chickamauga Opens. Bob said that previously it seemed he just barely lost his games; at Sacramento, for a happy change, he found the shoe on the other foot and just barely won three big ones.

In addition to the \$410 in cash prizes, engraved chess clocks went to: Class A Champion - Dr. Alexander Janushkowsky, Sacramento. Class B, C, and Unrated Champion from within the Central California Chess League - Tommy Byrne (a 12-year old), Sacramento. Class B, C, and Unrated Champion, non-member of the League - Moshe Shifrine, Davis. Upset Champion - Robert Oyler, Antioch.

A greatly encouraging feature was the participation of 28 unrated players, many of them absolutely new to organized chess. All fought like very devils against their rated opponents. Especially tough newcomers were Paul Hubbard, Tommy Byrne, Moshe Shifrine, and Bob Willson, each with 3 points; Lionel Wolfson, Wing Chong, Dennis Saccuzzo, and Leslie Marjay, each with $2\frac{1}{2}$.

It's also interesting to note that 42 -- exactly half -- of the 84 entries were from Central California Chess League clubs. Of the 42, 29 were from Sacramento and 13 from the other cities in the League. There were 35 players from elsewhere in California, 6 from Nevada, and 1 from Utah.

Tournament Directors Ed Edmondson and Neil Austin really had their hands full with 84 players and 5 rounds. They take this opportunity to thank all contestants for the wonderful cooperation which made the whole thing possible.

Hope to see you at next year's Central California Open and Qualifying Tournament!

CENTRAL CALIFORNIA OPEN, SACRAMENTO 1963

Player	1	2	3	4	5	Score
1. D. Suttles	W72	W11	W50	W5	D6	$4\frac{1}{2}-1\frac{1}{2}$
2. M. Wilkerson	W21	W29	D37	W22	W15	$4\frac{1}{2}-1\frac{1}{2}$
3. S. von Oettingen	W52	D28	W30	W37	W14	$4\frac{1}{2}-1\frac{1}{2}$
4. M. Eucher	W56	D15	W17	W16	D7	4 - 1
5. H. Gross	W71	W12	W26	L1	W23	4 - 1
6. J. Blackstone	W36	W34	W31	D14	D1	4 - 1
7. Lt. E. Silverbush	W58	W9	D39	W18	D4	4 - 1

THE CALIFORNIA CHESS REPORTER

Central Calif.	Open	1	2	3	4	5	Score
8.	R. Hoppe	W84*	D18	W28	D10	W26	4 - 1
9.	G. Kirby	W35	L7	W24	W27	W22	4 - 1
10.	G. Kane	W59	D17	W38	D8	W25	4 - 1
11.	A. Wang	W27	L1	W49	W54	W29	4 - 1
12.	Dr. J. Walters	W33	L5	W51	W48	W42	4 - 1
13.	O. Bender	L51	W71	W79	W32	W21	4 - 1
14.	R. Wilcox	W47	W43	W23	D6	L3	3½-1½
15.	O. Celle	W60	D4	W40	W39	L2	3½-1½
16.	A. Troy	D38	W42	W19	L4	W46	3½-1½
17.	I. Rivise	W63	D10	L4	W61	W39	3½-1½
18.	Dr. A. Janushkowsky	W68	D8	W41	L7	W48	3½-1½
19.	J. Fisher	W79	D40	L16	W66	W45	3½-1½
20.	J. McIlrath	L49	W58	D66	W38	W37	3½-1½
21.	M. Shifrine	L2	W33	W34	W55	L13	3 - 2
22.	T. Byrne	W53	W54	W32	L2	L9	3 - 2
23.	G. Rasmussen	W57	W24	L14	W50	L5	3 - 2
24.	R. Oyler	W25	L23	L9	W49	W57	3 - 2
25.	F. Olvera	L24	W56	W35	W62	L10	3 - 2
26.	S. Rubin	W62	W51	L5	W53	L8	3 - 2
27.	W. Cornwall	L11	W52	W43	L9	W66	3 - 2
28.	F. Thornally	W78	D3	L8	D40	W59	3 - 2
29.	Dr. P. Shelton	W76	L2	W72	W31	L11	3 - 2
30.	W. Rebold	W48	D41	L3	D44	W52	3 - 2
31.	T. Harris	W70	W77	L6	L29	W55	3 - 2
32.	G. Wren	W81	W55	L22	L13	W50	3 - 2
33.	F. Weinberg	L12	L21	W80	W73	W53	3 - 2
34.	A. Rich	W74	L6	L21	W79*	W58	3 - 2
35.	P. Hubbard	L9	W80	L25	W77*	W61	3 - 2
36.	R. Willson	L6	L48	W75	W71	W54	3 - 2
37.	L. Wolfson	W64	W61	D2	L3	L20	2½-2½
38.	C. Singleton	D16	W45	L10	L20	W69	2½-2½
39.	H. Edelstein	W83	W49	D7	L15	L17	2½-2½
40.	M. Mattingly	W67	D19	L15	D29	D44	2½-2½
41.	D. Saccuzzo	W44	D30	L18	L46	W67	2½-2½
42.	R. Henderson	D45	L16	W76	W64	L12	2½-2½
43.	G. Barrett	W66	L14	L27	W56	D47	2½-2½
44.	W. Chong	L41	W81	D46	D30	D40	2½-2½
45.	L. Marjay	D42	L38	W63	W60	L19	2½-2½
46.	J. Morton, Sr.	W73	L50	D44	W41	L16	2½-2½

Central Calif. Open	1	2	3	4	5	Score
47. D. Olmsted	L14	L72	W70	W65	D43	2½-2½
48. A. DiMilo	L30	W36	W73	L12	L18	2 - 3
49. M. McLennan	W20	L39	L11	L24	W73	2 - 3
50. E. Bogisch	W69	W46	L1	L23	L32	2 - 3
51. M. Holgerson	W13	L26	L12	L52	W76	2 - 3
52. A. Benson	L3	L27	W83*	W51	L30	2 - 3
53. W. Bakken	L22	W75	W57	L26	L33	2 - 3
54. W. Sanders	W80	L22	W65	L11	L36	2 - 3
55. S. Sloan	W75	L32	W69	L21	L31	2 - 3
56. L. Trottier	L4	L25	W68	L43	W75	2 - 3
57. L. C. Eaton	L23	W59	L53	W74	L24	2 - 3
58. S. McCarter	L7	L20	W81	W78	L34	2 - 3
59. P. Vayssie	L10	L57	W82	W72	L28	2 - 3
60. A. Olson	L15	W63	L67	L45	W79	2 - 3
61. J. Barlow	W82	L37	W74	L17	L35	2 - 3
62. J. Kaneko	L26	W68	W77	L25	- -	2 - 3
63. G. B. Oakes	L17	L60	L45	W81	W72	2 - 3
64. E. Underwood	L37	W67	L71	L42	W74	2 - 3
65. T. Toleno	L77	W84*	L54	L47	W71	2 - 3
66. W. D. Curdy	L43	W82	D20	L19	L27	1½-3½
67. R. Christian	L40	L64	W60	D69	L41	1½-3½
68. J. Jacino	L18	L62	L56	D70	W81	1½-3½
69. J. Arguijo	L50	W70	L55	D67	L38	1½-3½
70. G. M. Wilson	L31	L69	L47	D68	W80	1½-3½
71. M. Goodall	L5	L13	W64	L36	L65	1 - 4
72. M. Sanders	L1	W47	L29	L59	L63	1 - 4
73. J. Bush	L46	W83	L48	L33	L49	1 - 4
74. P. Lincecum	L34	W78	L61	L57	L64	1 - 4
75. E. Reynolds	L55	L53	L36	W82*	L56	1 - 4
76. C. Parcels	L29	D79	L42	D80	L51	1 - 4
77. Capt. Velasaron	W65	L31	L62	L35*	- -	1 - 4
78. A. M. Smith	L28	L74	Bye	L58	- -	1 - 4
79. J. Lovejoy III	L19	D76	L13	L34*	L60	½ -4½
80. N. Wilcox Jr.	L54	L35	L33	D76	L70	½ -4½
81. J. Wells	L32	L44	L58	L63	L68	0 - 5
82. K. Swatsenbarg	L61	L66	L59	L75	- -	0 - 5
83. J. Hayward	L39	L73	L52	- -	- -	0 - 5
84. P. Mongan	L8*	L65*	- -	- -	- -	0 - 5

RAY MARTIN RETURNS TO WIN COLUMN

Ray Martin, who was the terror of Southern California Chess in the '50's, has again made his presence felt in an important tournament. He was undefeated in the 8-round tourney at City Terrace, allowing draws to Matzner, Cunningham and Rodemich. Matzner lost to E. Warner. While the 20 entries were lower than last year's (28), there was considerable strength: M. Gordon, J. Mego, F. Hufnagel, E. Warner and others. Joe Mego ran into a rocky road and withdrew after round six; Frank Hufnagel was called away on business and had to retire from the tourney after 3.

SOUTHERN CALIFORNIA CHAMPIONSHIP, 1963

PLAYER	1	2	3	4	5	6	7	8	Score
1. R. Martin	W11	W4	D2	W5	W10	D3	W6	D8	6½-1½
2. S. Matzner	W14	W19	D1	W3	W5	W4	W10	L6	6½-1½
3. Cunningham	W12	D6	W20	L2	W11	D1	W5	D4	5½-2½
4. Kupersmith	W10	L1	W14	W6	W8	L2	W9	D3	5½-2½
5. M. Gordon	W9	W12	W16	L1	L2	W8	L3	W10	5 - 3
6. E. Warner	W13	D3	W11	L4	D16	D10	L1	W2	4½-3½
7. P. Gulick	L8	W15	W19	L10	W18	L11	D13	W17	4½-3½
8. E. Rodemich	W7	L14	W18	W16	L4	L5	D11	D1	4 - 4
9. S. Geller	L5	L18	W17	L11	W12	W16*	L4	W15	4 - 4
10. R. Moore	L4	W13	W15	W7	L1	D6	L2	L5	3½-4½
11. O. Stumbrs	L1	W17	L6	W9	L3	W7	D8	L12	3½-4½
12. R. Gish	L3	L5	L13	W17	L9	W14	L15	W11	3 - 5
13. Fk Frilling	L6	L10	W12	D18	L14	L17	D7	W By	3 - 5
14. R. Katzl	L2	W8	L4	W15	W13	L12	- -	- -	3 - 5
15. Fd Frilling	L16	L7	L10	L14	W17	D18	W12	L9	2½-5½
16. J. Mego	W15	W20	L5	L8	D6	L9*	- -	- -	2½-5½
17. D. Littrell	L19	L11	L9	L12	L15	W13	W18*	L7	2 - 6
18. D. Weil	L20	W9	L8	D13	L7	D15	L17*	- -	2 - 6
19. McCartney	W17	L2	L7	- -	- -	- -	- -	- -	1 - 7
20. F. Hufnagel	W18	L16	L3	- -	- -	- -	- -	- -	1 - 7

SLOAN TOPS 67 IN AMATEUR TOURNEY

Sam Sloan of San Francisco proved the best of the 67 participants in the Southern California Amateur Championship, scoring 7-1 to win the trophy and \$300 first prize.

Sloan was defeated in the 3-rd round by Dan Amneus, but won all his remaining games, including his final 4 last weekend at Santa Monica.

Amneus had been in the lead up to the last round, compiling a 6½-½ score. He lost to J. Gilbert in the final game, however, tying with the latter for second and third with 6½-1½.

A SERIOUS PROPOSAL ON PREMATURE DRAWS

Isaac Kashdan, State Federation President, has made an original proposal regarding "Grandmaster" draws. Although tradition is always hard to upset, we believe that a Grandmaster's suggestions be given serious attention -- especially when that Grandmaster is also a major chess organizer. We quote from Kashdan's remarks:

Early agreed draws in tournament play... has been a problem for years for players, directors and promoters of chess tournaments. It is clearly unfair to spectators, particularly where an admission fee is charged, for masters to sit down, run through a few moves and then agree to a draw.

True, each player loses half a point, as compared to the one who wins his game. Then there are, of course, such things as legitimate draws. The question is whether a rule can be enforced, depending on 30 moves or any particular number, that must be played before a draw is declared.

If two masters are paired, and each believes that it is to his best interest not to lose, then they will draw, whether it requires 20, 30 or 50 moves to satisfy any arbitrary rule. The director can hardly forfeit both players in such circumstances.

We have given this matter considerable thought and believe there is another approach that promises greater success. This is to provide additional incentive to play for a win, by a change in the scoring procedure.

Our proposal is that in each game played to a finish, the winner receive four points and the loser one point. In a drawn game each player will receive two points.

The present universal scoring is one point for a win, nothing for a loss and half a point for a draw. The new proposal would still allot twice as much for a win as for a draw, but a win and loss would earn a total of five points, whereas two draws would total only four points.

What would happen in practice? Suppose a player had a certain draw, perhaps by perpetual check. This would net him two points. He has good prospects for a win, but may overlook something and lose. He can gain two points by a win as against a draw, and he risks only one point should he finally lose the game.

Frequently players agree to a draw when both are in time pressure, for fear of a blunder. With twice as much to gain as to lose, the tendency will be to continue such games, and many more wins will result.

Should a player be unable to play for any reason and be forfeited, the winner will still receive four points, but the loser will not score. The one point would be awarded for games actually played and lost.

PACIFIC SOUTHWEST OPEN, 1963

Out of 9 players who were in the running for the big money in the last round 4 were ex-San Franciscans J. Loftsson, R. Currie, J. Schmitt, and W. Addison. The important last round results were: Evans won from Weinberger, Simon lost to Addison, Schmitt lost to Currie, Barlai (who won the N. Calif. Championship one year) won from Loftsson, Henin (who was out of the running) won from Kupersmith. White is listed first in the above games. The only undefeated players were Evans & Addison who drew with each other. Addison's other draw was with Loftsson.

Pacific SW Open	1	2	3	4	5	6	Score
1. L. Evans	W22	W18	W4	W8	D3	W12	5½ - ½
2. I. Barlai	W44	W16	W11	L10	W15	W9	5 - 1
3. W. Addison	W48	W23	W14	D9	D1	W8	5 - 1
4. R. Currie	W49	W28	L1	W22	W19	W10	5 - 1
5. I. Rivise	W37	L13	W28	W16	D18	W24	4½ - 1½
6. R. Gross	W57	W34	L8	D21	W25	W18	4½ - 1½
7. C. Henin	W32	L19	W30	D31	W21	W11	4½ - 1½
8. L. Simon	W61	W17	W6	L1	W20	L3	4 - 2
9. J. Loftsson	W36	W24	W19	D3	D10	L2	4 - 2
10. J. Schmitt	W55	W15	D41	W2	D9	L4	4 - 2
11. L. Kupersmith	W38	W12	L2	W30	W31	L7	4 - 2
12. T. Weinberger	W29	L11	W35	W32	W13	L1	4 - 2
13. R. Freeman	W51	W5	D31	W41	L12	D19	4 - 2
14. R. Martin	W59	W25	L3	L20	W50	W34	4 - 2
15. Gross	W60	L10	W48	W33	L2	W28	4 - 2
16. Zwerdling	W53	L2	W44	L5	W48	W31	4 - 2
17. E. Kennedy	W52	L8	L36	W57	W32	W35	4 - 2
18. D. Conwit	W33	L1	W45	W36	D5	L6	3½ - 2½
19. S. Almgren	W46	W7	L9	W49	L4	D13	3½ - 2½
20. D. Benge	W54	L31	W29	W14	L8	D23	3½ - 2½
21. T. Bullockus	L31	W46	W39	D6	L7	W37	3½ - 2½
22. A. Kempner	L1	W60	W46	L4	W49*	D27	3½ - 2½
23. A. Spiller	W39	L3	L32	W27	W45*	D20	3½ - 2½
24. R. Laver	W26	L9	D37	W42	W41*	L5	3½ - 2½
25. Rodemich	W40	L14	D42	W37	L6	W39	3½ - 2½

At 3-3:

R. Clark, Eglitis, Fisher, Geiler, J. Gilbert, M. Gordon, T. Jester, Pollard, C. Rasis, S. Sloan, and O. Stumbrs.

GAME OF THE MONTH

Larry Evans is writing the new edition of MCO and has just finished two large, important sections on the King's Indian and the Sicilian. Rated a Grandmaster by FIDE, he was paired against former San Franciscan Bob Currie in an interesting King's Indian in the 3rd round of the Pacific Southwest Open.

Notes by R. Currie.

PACIFIC & SOUTHWEST OPEN
Santa Monica, 1963

White	Black
R. Currie	L. Evans
1. P-Q4	Kt-KB3
2. P-QB4	P-KKt3
3. P-KKt3	B-Kt2
4. B-Kt2	0-0
5. P-K4	P-Q3
6. Kt-K2	Kt-B3
7. 0-0	P-K4
8. P-KR3	PxP
9. KtxP	R-K1
10. KtxKt	PxKt
11. Q-B2	R-Kt1
12. Kt-Q2	Q-K2

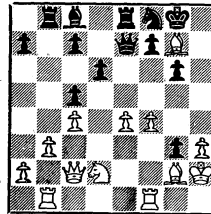
These notes are just thoughts that occurred during the game. Closer analysis may find them in error.

Black might have tried 12... P-Q4;. It leaves him with structural weaknesses but frees his game and gives his pieces great scope.

13. K-R2	P-B4
14. R-Kt1	P-KR4
15. P-Kt3	Kt-Q2
16. P-B4	Kt-B1
17. B-Kt2	P-R5
18. BxB	...

Maybe P-KKt4 is best here. I chose BxB to get my Q over to the King side fast.

18. ... Pxpch



19. K-R1 ...
K-Kt1 is best I think. Then if 19... KxB; 20. Q-B3ch, Q-B3; 21. QxP and Black's check Q-Q5 is nothing.

19. ...	KxB
20. Q-B3ch	Q-B3
21. QxP	Kt-K3
22. P-K5	...

Evans asked me at this point, "Are you playing for a win or do you want a draw?" I declined.

22. ...	Q-B4
23. PxP	...

The consequences of 19. K-R1 are clear now. White can't play 23. B-K4 because 23... B-Kt2.

23. ...	PxP
24. Kt-K4	R-Kt3

25. Q-B3ch ...
 If 25. QR-Q1, Kt-Q5; and White
 can't sacrifice.

- 25. ... Kt-Q5
- 26. QR-K1 B-Q2
- 27. Kt-Kt3 Q-B7
- 28. QxQ KtxQ
- 29. RxR BxR
- 30. R-B2 Kt-Q5
- 31. P-B5 ...

For the remaining moves I had
 only a few minutes. Still I should
 have made the time limit. The
 situation reminds one of a mouse
 and snake!

- 31. ... P-B3
- 32. PxP BxP
- 33. Kt-K2 Kt-B7
- 34. Kt-B4 Kt-Kt5
- 35. KtxB KxKt
- 36. B-K4ch K-B2
- 37. K-Kt2 R-Kt1
- 38. R-Q2 K-K3
- 39. B-Q5ch KtxB
- 40. RxKt P-R4
- 41. K-B3 P-R5
- 42. R-Q3 PxP
- 43. PxP R-QR1
- 44. R-K3ch K-B4
- 45. R-Q3

and White's flag fell.
 It's a draw except for the clock.

The following game was the
 first loss by the new California
 Open Champion:

CENTRAL CALIFORNIA OPEN 1963

	White	Black
	M. Eucher	I. Rivise
1.	P-K4	P-K4
2.	P-KB4	PxP
3.	Kt-KB3	P-Q4
4.	PxP	Kt-KB3
5.	P-B4	P-B3
6.	P-Q4	PxP
7.	BxP	Kt-B3
8.	Kt-B3	B-QKt5
9.	P-QR3	B-K2
10.	P-B5	0-0
11.	B-QKt5	Kt-KR4
12.	Q-Q2	Kt-QB4
13.	Q-K3	KtxB?
14.	QxKt	B-K3
15.	0-0	R-B1
16.	P-QKt4	Kt-B3
17.	QR-K1	B-B3
18.	P-KR4	P-KR3
19.	P-KKt3	Q-B2
20.	Kt-K5	KtxKt
21.	PxKt	B-K2
22.	Kt-K2	P-QKt3
23.	P-B6	P-QR4
24.	Kt-Q4	B-R6
25.	R-B2	PxP
26.	PxP	BxP
27.	Q-B3	B-K3
28.	Q-R5	Q-K2
29.	K-Kt2	PxP
30.	PxP	K-Kt2
31.	B-Q3	R-B2
32.	R-KB1	B-K5
33.	R-B6	B-QB1
34.	P-K6	QxP(Kt5)
35.	RxBch	Resigns.

