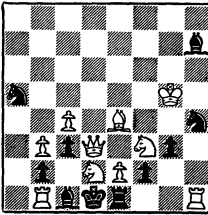


# THE CALIFORNIA CHESS REPORTER

NOVEMBER - DECEMBER, 1966

VOLUME XVI, NUMBER 3

"A Sound Problem"  
(Sherlock Holmes)



Mate in 2

FROM:  
244 Kearny Street, San Francisco, CA 94108

TO

David Lawson  
111 Montague Street  
Brooklyn 2, New York 10002

# THE CALIFORNIA CHESS REPORTER

Vol. XVI, No. 3

\$2 per year

November-December 1966

THE CALIFORNIA CHESS REPORTER, 244 Kearny Street, San Francisco 94108

Published Bi-monthly

Official Organ of the California State Chess Federation

Editor: Guthrie McClain

Associate Editors: Gordon S. Barrett, Los Angeles; Dr. Mark W. Eudey, Atherton;  
Neil T. Austin, Sacramento; Irving Rivise, Los Angeles

Games Editor: William G. Addison

Guest Annotator: Intl. Master Imre Konig

Reporter Tasks: Robert E. Burger

Second-class postage paid at San Francisco, California

## CONTENTS

California State Champ.....	50	Castle Club Champ .....	58
American Open.....	51-54	El Segundo Champ .....	58-59
S. F. Bay Area Championship	54-55	Atomics International Champ.	59-60
Riverside Open .....	55-56	Game of the Month.....	60-61
Golden Gate Club .....	56-57	Who Was Makovetz? .....	61-63
San Gabriel Valley Open....	57-58	Games .....	64-71
		Tasks .....	72

## HENIN CALIFORNIA CHAMPION

The windup of the 1966 chess year in California was the finals of the State Championship. It was San Francisco's turn to hold the tournament, and by preference of the players it was held December 30 - January 2. Charles Henin of Sherman Oaks won the title.

Earlier, in November, a larger and perhaps more prestigious event was held in Santa Monica - the American Open. Lawrence Kaufman of MIT tied with Robion Kirby of UCLA and won the American Open title on tie-breaking points. (First prize at Santa Monica was \$600 and the State Championship at San Francisco was worth only \$150. The American Open had 128 contestants and the State Championship only 9. But here is a point: The State Championship finalists qualified through tournaments which had a total of more than 400 contestants!)

It was a big year in California chess, and as winter came again there was the usual cutback in individual tournaments and preparations for the team tournaments. Of this, more in our next issue.

HENIN WINS CALIFORNIA STATE CHAMPIONSHIP

Charles Henin of Sherman Oaks won the State Championship at the Mechanics' Institute Chess Club in San Francisco, held December 30-January 2, by the close margin of  $5\frac{1}{2}$  points over the 5 points scored by Erik Osbun of San Jose. Henin had qualified to the finals with a first-place finish in the Southern California Championship, scored two points in the preliminary rounds in southern California, and made the best score at San Francisco with  $3\frac{1}{2}-\frac{1}{2}$ .

The ten finalists were the Open Champion, Irving Rivise, the first four from the Southern California Championship, the Central California Northern California, San Francisco Bay Area, and Chess Friends of Northern California champions, and a substitute for last year's champion, Don Sutherland (who was in the East playing in the inter-collegiates). Oddly enough, it was the substitute Erik Osbun, who finished second to the champion.

There were five players from each part of the State, who played four games each in the preliminaries before meeting in San Francisco. As the finals began, Borel Menas of Berkeley, the Northern California champion, was compelled to withdraw because of illness. Menas had lost to Osbun and Thornally, had drawn with Schutt, and had an adjourned game with Grey which may have been a draw. All results were cancelled for purposes of scoring the tournament (although the games actually played were included in the rating report to the USCF).

The prizes were: Henin \$150; Osbun \$100; Eberlein and Schutt \$42.50 each; Kirby and Rivise \$29 each; Thornally \$23; Grey \$19; and Hanken \$15. The Tournament was sponsored by the California State Chess Federation and the Mechanics' Institute Chess Club and was directed by Carroll M. Capps.

CALIFORNIA STATE CHAMPIONSHIP, SAN FRANCISCO 1966-67

	1	2	3	4	5	6	7	8	9	Score
1. C. Henin	X	1	1	1	1	0	$\frac{1}{2}$	1	0	$5\frac{1}{2}-2\frac{1}{2}$
2. E. Osbun	0	X	$\frac{1}{2}$	1	$\frac{1}{2}$	1	$\frac{1}{2}$	$\frac{1}{2}$	1	5 - 3
3. P. Eberlein	0	$\frac{1}{2}$	X	0	1	$\frac{1}{2}$	1	1	$\frac{1}{2}$	$4\frac{1}{2}-3\frac{1}{2}$
4. R. Schutt	0	0	1	X	1	1	$\frac{1}{2}$	0	1	$4\frac{1}{2}-3\frac{1}{2}$
5. R. Kirby	0	$\frac{1}{2}$	0	0	X	$\frac{1}{2}$	1	1	1	4 - 4
6. I. Rivise	1	0	$\frac{1}{2}$	0	$\frac{1}{2}$	X	$\frac{1}{2}$	$\frac{1}{2}$	1	4 - 4
7. F. Thornally	$\frac{1}{2}$	$\frac{1}{2}$	0	$\frac{1}{2}$	0	$\frac{1}{2}$	X	$\frac{1}{2}$	1	$3\frac{1}{2}-4\frac{1}{2}$
8. P. Grey	0	$\frac{1}{2}$	0	1	0	$\frac{1}{2}$	$\frac{1}{2}$	X	$\frac{1}{2}$	3 - 5
9. J. Hanken	1	0	$\frac{1}{2}$	0	0	0	0	$\frac{1}{2}$	X	2 - 6

KAUFMAN WINS AMERICAN OPEN AT SANTA MONICA

Lawrence Kaufman of MIT came to California from Boston and stayed long enough to win the American Open Trophy in a tie break over Robion Kirby of UCLA. Both players scored 7-1. Kaufman lost a game (to Dr. Anthony Saïdy), and Kirby drew twice (with Paul Perillo and Patrick Eberlein). When the sums of the opponents were calculated, Kaufman had 4½ and Kirby had 4½. The \$600 first prize and the \$300 second prize were shared equally, however. Third prize was \$175 and fourth prize was \$125.

John Blackstone won the Expert Trophy, Steve Hohensee the "A" trophy, Norman Lessing the "over 50" trophy, C. Whitman the "B" trophy, B. Reynolds the "under 18" trophy, R. Taylor the "C" trophy, V. Tokareff the unrated trophy, Lena Grumette the women's trophy, and A. Gojich the "under 14" trophy.

There were 128 contestants and the tournament director was grandmaster Isaac Kashdan.

AMERICAN OPEN SANTA MONICA NOVEMBER 24-27, 1966

	1	2	3	4	5	6	7	8	Score
1. L. Kaufman	W67	W20	W58	L7	W44	W9	W10	W8	7 - 1
2. R. Kirby	W46	W79	W42	W14	D26	D18	W11	W7	7 - 1
3. P. Benko	W36	W19	W17	D8	W28	L5	W23	W13	6½-1½
4. R. Jacobs	W66	W22	W31	L9	W19	W26	W18	D5	6½-1½
5. J. Blackstone	W69	D21	W45	W81	W48	W3	D7	D4	6½-1½
6. W. Cunningham	W94	W59	W44	D28	L8	W43	W16	W14	6½-1½
7. A. Saïdy	W49	W11	W41	W1	W9	D8	D5	L2	6 - 2
8. J. Hanken	W96	W32	W107	D3	W6	D7	W35	L1	6 - 2
9. P. Quillen	W84	W61	W47	W4	L7	L1	W36	W24	6 - 2
10. T. Weinberger	W90	L33	W66	W57	W42	W24	L1	W27	6 - 2
11. S. Hohensee	W37	L7	W122	W76	W87	W64	L2	W26	6 - 2
12. W. Maillard	D92	W50	W106	W33	L18	D56	W30	W28	6 - 2
13. R. Gross	W68	D106	L43	W50	W21	W79	W41	L3	5½-2½
14. N. Lessing	W82	W34	W62	L2	W58	D23	W37	L6	5½-2½
15. J. Gibson	D70	D92	W69	L35	W90	W45	W56	D18	5½-2½
16. L. Enequist	W99	L81	W108	D107	W65	W46	L6	W49	5½-2½
17. M. Leidner	W100	W119	L3	L48	W91	W47	D51	W58	5½-2½
18. P. Perillo	W109	D52	W65	W96	W12	D2	L4	D15	5½-2½
19. E. Gabuyo	W118	W3	W98	W119	L4	D22	W76	W51	5½-2½
20. R. Kempner	W123	L1	W73	W111	L24	W96	D38	W40	5½-2½
21. J. Mortz	W128	D5	L23	W85	L13	W53	W70	W41	5½-2½
22. G. Schain	W112	L4	W127	L42	W54	D19	W39	W38	5½-2½
23. I. Rivise	D50	W70	W21	W43	D67	D14	L3	D35	5 - 3

## AMERICAN OPEN (continued)

	1	2	3	4	5	6	7	8	Score
24. R. Martin	W114	L58	W91	W59	W20	L10	W44	L9	5 - 3
25. H. Mayer	W48	L42	W92	D62	L35	W81	D63	W58	5 - 3
26. P. Eberlein	W93	D45	W52	W87	D2	L4	W34	L11	5 - 3
27. J. Mego	W95	L62	W67	W61	L37	W60	W64	L10	5 - 3
28. C. Harman	W98	W63	W76	D6	L3	D51	W61	L12	5 - 3
29. W. Stewart	W51	L47	L96	D71	W84	W50	W65	D37	5 - 3
30. K. R. Jones	W117	L76	W71	L65	W92	W48	L12	W61	5 - 3
31. S. Geller	W110	W68	L4	L37	L93	W115	W92	W64	5 - 3
32. D. Cotten	W102	L8	W95	D53	L51	D67	W68	W63	5 - 3
33. S. Rubin	W124	W10	L87	L12	W68	L36	W93	W60	5 - 3
34. B. Pollard	W71	L14	L74	W98	W82	W87*	L26	W54	5 - 3
35. M. Goodall	W101	D38	L40	W15	W25	W39	L8	D23	5 - 3
36. C. Whitman	L3	L73	W118	W122	W40	W33	L9	W56	5 - 3
37. B. Reynolds	L11	W117	W63	W31	W27	D41	L14	D29	5 - 3
38. A. Spiller	W83	D35	W64	W70	D45	W58	D20	L22	4½-3½
39. R. Laver	W85	W88	D81	L64	W62	L35	L22	W82	4½-3½
40. I. Szafir	W115	D64	W35	D80	L36	D66	W62	L20	4½-3½
41. A. Kanamori	W72	W80	L7	W47	W107	D37	L13	L21	4½-3½
42. P. Forsee	W108	W25	L2	W22	L10	L61	W67	D45	4½-3½
43. M. Kerfenevich	W77	D65	BYE	L23	W53	L6	L52	W83	4½-3½
44. J. Tarjan	W126	W54	L6	W74	L1	W93	L24	D47	4½-3½
45. T. Bullockus	W104	D26	L5	W115	D38	L15	W96	D42	4½-3½
46. S. Katona	L2	W82	L53	W101	W94	L16	D86	W85	4½-3½
47. H. Edelstein	W127	W29	L9	L41	W86*	L17	W78	D44	4½-3½
48. R. Eagles	L25	W101	W116	W17	L5	L30	D105	W86	4½-3½
49. P. Shuey	L7	D85	L111	W116	W109	W55	W79	L16	4½-3½
50. D. Oshana	D23	L12	W75	L13	W105	L29	W116	W79	4½-3½
51. R. Taylor	L29	W126	D56	W106	W31	D28	D17	L19	4½-3½
52. V. Tokareff	W89	D18	L26	L56	W83	W107	W43	L17	4½-3½
53. J. Kolkey	L57	W100	W46	D32	L43	L21	W91	W80	4½-3½
54. E. Osbun	W91	L44	W90	L58	L22	W94	W66	L34	4 - 4
55. F. McReynolds	W97	L107	D83	D94	D66	L49	W84	D65	4 - 4
56. K. Stani	L119	W110	D51	W52	W81	D12	L15	L36	4 - 4
57. L. Grumette	W53	L87	W86	L10	D67	D70	D82	D73	4 - 4
58. D. Fritzinger	W105	W24	L1	W54	L14	L38	W100	L25	4 - 4
59. R. Stork	W74	L6	W121	L24	L96	W90	D73	D76	4 - 4
60. G. Buckendort	L76	L83	W117	W72	W74	L27	W75	L33	4 - 4
61. N. Kurtz	W103	L9	W125	L27	W119	W42	L28	L30	4 - 4
62. H. Singleton	W73	W27	L14	D25	L39	W111	L40	D74	4 - 4
63. R. Henstaedter	W75	L28	L37	W100	D76	W110	D25	L32	4 - 4
64. S. Salter	W121	D40	W38	W39	D23	L11	L27	L31	4 - 4
65. B. Gross	W111	D43	L18	W30	L16	W71	L29	D55	4 - 4
66. J. Mathis	L4	W102	L10	W73	D55	D40	L54	W98	4 - 4
67. G. Davis	L1	W77	L27	W120	D57	D32	L42	W96	4 - 4

## AMERICAN OPEN (continued)

	1	2	3	4	5	6	7	8	Score
68. W. Dockery	L13	L31	W102	W127	L33	W121	L32	W100	4 - 4
69. B. Figueroa	L5	W72	L15	L86	W103	L78	W117	W97	4 - 4
70. A. Gojich	D15	L23	W104	L38	W85	D57	L21	W105	4 - 4
71. L. Mulinex	L34	W103	L30	D29	D75	L65	W121	W92	4 - 4
72. S. Markman	L41	L69	W126	L60	W120	L73	W113	W108	4 - 4
73. B. Mueller	L62	W36	L20	L66	W104	W72	D59	D57	4 - 4
74. G. Boehm	L59	W93	W34	L44	L60	D91	W81	D62	4 - 4
75. W. Gottschalk	L63	D84	L50	W114	D71	W113	L60	W94*	4 - 4
76. W. Howeth	W60	W30	L27	L11	D63	W80	L19	D59	4 - 4
77. B. Kohn	L43	L67	W97	L93	W98	L92	W115	W95	4 - 4
78. R. Walmisley	L81	W97	L80	L82	W95	W69	L47	W93	4 - 4
79. S. Almgren	W116	L2	D94	W83	W80	L13	L49	L50	3½-4½
80. R. Pease	W125	L41	W78	D40	L79	L76	W110	L53	3½-4½
81. M. Thomason	W78	W16	D39	L5	L56	L25	L74	W110	3½-4½
82. P. McCarthy	L14	L46	W123	W78	L34	W119	D57	L39	3½-4½
83. V. Fagin	L38	W60	D55	L79	L52	W125	W106*L43		3½-4½
84. J. Hughey	L9	D75	L85	W104	L29	W102	L55	W106*	3½-4½
85. P. Razien	L39	D49	W84	L21	L70	W114	W88	L46	3½-4½
86. R. Vance	L106	W99	L57	W69	L47*	W88	D46	L48	3½-4½
87. C. Henin	W113	W57	W33	L26	L5	L34*	-	-	3 - 5
88. C. Henderson	W120	L39	L119	D110	W125	L86	L85	D91	3 - 5
89. T. Dean	L52	L98	L110	W102	W101	L100	L96	W118	3 - 5
90. R. McCullough	L10	W105	L54	W95	L15	L59	W99	-	3 - 5
91. M. Pedersen	L54	W112	L24	W121	L17	D74	L53	D88	3 - 5
92. P. Donahoe	D12	D15	L25	W103	L30	W77	L31	L71	3 - 5
93. J. Jennings	L26	L74	W124	W77	W31	L44	L33	L78	3 - 5
94. G. Olsson	L6	W124	D79	D55	L46	L54	W101	L75*	3 - 5
95. J. Jiron	L27	W123	L32	L90	L78	W118	W119	L77	3 - 5
96. S. Vigneau	L8	W89	W29	L18	W59	L20	L45	L67	3 - 5
97. A. Epstein	L55	L78	L77	W124	L121	W126	W125	L69	3 - 5
98. C. Fotias	L28	W128	L19	L34	L77	W122	W89	L66	3 - 5
99. C. Judd	L16	L86	L103	L126	W128	W120	L90	W121*	3 - 5
100. J. H. Wilson	L17	L53	W128	L63	W127	W89	L58	L68	3 - 5
101. W. Singleton	L35	L48	W101	L46	L89	W112	L94	W114	3 - 5
102. A. Bullockus	L32	L66	L68	L89	W123	L84	W127	W113	3 - 5
103. M. Brody	L61	L71	W99	L92	L69	L117	W120	W116	3 - 5
104. S. Spurgin	L45	D109	L70	L84	L73	W123	D114	W119	3 - 5
105. G. Wood	L58	L90	D114	W118	L50	W108	D48	L70	3 - 5
106. D. Anderson	W86	D13	L12	L51	L110	W109	L83*	L84*	2½-5½
107. S. Sternlich	W122	W55	L8	D16	L41	L52	-	-	2½-5½
108. H. D. Rader	L42	W118	L16	D125	L111	L105	W109	L72	2½-5½
109. W. McGrann	L18	D104	L120*W123	L49	L106	L108	W126		2½-5½
110. G. Gill	L31	L56	W89	D88	W106	L63	L80	L81	2½-5½
111. E. Jaaska	L65	D116	W49	L20	W108	L62	-	-	2½-5½

## AMERICAN OPEN (continued)

	1	2	3	4	5	6	7	8	Score
112. F. Jay Jr.	L22	L91	L115	D117	L114	L101	W128	W124	2½-5½
113. A. Schultz	L87	L122	L101	W128	W126	L75	L72	L102	2 - 6
114. G. Fennell	L24	L125	D105	L75	W112	L85	D104	L101	2 - 6
115. J. Fosaaen	L40	L121	W112	L45	W122	L31	L77	-	2 - 6
116. W. Judd	L79	D111	L48	L49	D117	W127	L50	L103	2 - 6
117. W. Clipson	L30	L37	L60	D112	D116	W103	L69	-	2 - 6
118. B. Herschensohn	L19	L108	L36	L105	W124	L95	W122	L89	2 - 6
119. J. Baker	W56	L17	W88	L19	L61	L82	L95	L104	2 - 6
120. Benjamin	L88	L127	W109*	L67	L72	L99	L103	W125	2 - 6
121. D. Krumholz	L64	W115	L59	L91	W97	L68	L71	L99*	2 - 6
122. J. Manley	L107	W113	L11	L36	L115	L98	L118	W127	2 - 6
123. B. Murdock	L20	L95	L82	L109	L102	L104	BYE	W128	2 - 6
124. T. Judd, Jr.	L32	L94	L93	L97	L118	W128	D126	L112	1½-6½
125. T. Holst	L80	W114	L61	D108	L88	L83	L97	L120	1½-6½
126. W. Mohawk	L44	L51	L72	W99	L113	L97	D124	L109	1½-6½
127. Roberts	L47	W120	L22	L68	L100	L116	L102	L122	1 - 7
128. R. Wood	L21	L98	L100	L113	L99	L124	L112	L123	0 - 8

## THORNALLY SAN FRANCISCO CHAMPION

Frank Thornally became the last finalist for the State Championship when he won the San Francisco Bay Area Championship in November. Thornally's 4½-½ score beat out Erik Osbun of San Jose by half a point. The tournament was held at the Mechanics' Institute. Alan W. Bourke directed.

## SAN FRANCISCO BAY AREA CHAMPIONSHIP, November 12-13, 1966

	1	2	3	4	5	Score
1. F. Thornally	W26	W9	W19	W5	D2	4½-½
2. E. Osbun	W15	D11	W18	W8	D1	4 - 1
3. Z. Baroudi	W12	L8	W9	W17	W6	4 - 1
4. J. Gutierrez	W18	W23	L5	W16	W12	4 - 1
5. E. Syrett	W7	W17	W4	L1	D8	3½-1½
6. D. Blohm	W16	W10	D8	W11	L3	3½-1½
7. P. Grey	L5	W13	W26	D10	W20	3½-1½
8. N. Wood	W27	W3	D6	L2	D5	3 - 2
9. R. Goudswaard	W14	L1	L3	W22	W16	3 - 2
10. M. Goodall	W13	L6	W24	D7	D11	3 - 2
11. M. Wilkerson	W21	D2	W23	L6	D10	3 - 2
12. G. Pickler	L3	W27	W14	W19	L4	3 - 2
13. R. Trenberth	L10	L7	W21	W24	W17	3 - 2
14. R. Clipson	L9	W26	L12	D15	W19	2½-2½
15. J. Salna	L2	L24	W25	D14	W23	2½-2½

## SAN FRANCISCO BAY AREA CHAMPIONSHIP (continued)

	1	2	3	4	5	Score
16. B. Gross	L6	W25	W20	L4	L9	2 - 3
17. R. Menaster	W25	L5	W22	L3	L13	2 - 3
18. R. Wheeler	L4	W21	L2	L20	W24	2 - 3
19. R. Rowland	BYE	W20	L1	L12	L14	2 - 3
20. A. T. Lee	W24	L19	L16	W18	L7	2 - 3
21. L. O'Doan	L11	L18	L13	W23	BYE	2 - 3
22. J. Cornwell	L23	BYE	L17	L9	W25	2 - 3
23. L. A. Post	W22	L4	L11	L21	L15	1 - 4
24. R. Hansen	L20	W15	L10	L13	L18	1 - 4
25. G. Surian	L17	L16	L15	BYE	L22	1 - 4
26. J. Mathis	L1	L14	L7	-	-	0 - 5
27. G. S. Wren	L8	L12	-	-	-	0 - 5

## KUPERSMITH WINS RIVERSIDE OPEN TROPHY

Leo Kupersmith emerged first on tie-breaking points in a triple tie at the Riverside Open in November, edging out Steve Hohensee and Chuck Whitman by one Solkoff point. The three top men beat out Arthur Spiller and Bill Maillard in the last round.

There was a triple tie for the Under 2000 prize (Jim Tarjan, Karl Stani and Elliot Stearns). Ted Kemmerer and H. D. Rader tied for the Under 1800 prize and Chris Fotias won the Under 1600 prize.

## RIVERSIDE OPEN NOVEMBER 4 - 6, 1966.

	1	2	3	4	5	6	Score
1. L. Kupersmith	W10	W15	W3	W23	L4	W7	5 - 1
2. S. Hohensee	W9	W13	L8	W15	W11	W5	5 - 1
3. C. Whitman	W20	W12	L1	W19	W6	W4	5 - 1
4. A. Spiller	W27	W17	W7	D5	W1	L3	4½-1½
5. W. Maillard	W18	W11	W6	D4	W8	L2	4½-1½
6. J. Tarjan	W14	W28	L5	W10	L3	W13	4 - 2
7. K. Stani	W21	W24	L4	W9	W14	L1	4 - 2
8. E. Stearns	W26	L19	W2	W13	L5	W14	4 - 2
9. T. Kemmerer	L2	W22	W19	L7	W23	W16	4 - 2
10. H. Rader	L1	W30	W25	L6	W19	W24	4 - 2
11. R. Gosline	W22	L5	W28	W20	L2	D12	3½-2½
12. D. Cotten	W16	L3	L14	W28	W18	D11	3½-2½
13. C. Fotias	W23	L2	W17	L8	W15	L6	3 - 3
14. G. Fennell	L6	W25	W12	W24	L7	L8	3 - 3
15. Dr. Schlosser	W30	L1	W20	L2	L13	W26	3 - 3



## RIVERSIDE OPEN (continued)

	1	2	3	4	5	6	Score
16. L. Noel	L12	L20	W30	W27	W17	L9	3 - 3
17. M. Thomason	W29	L4	L13	W21	L16	W27	3 - 3
18. L. Cantafio	L5	W26	L24	W29	L12	W23	3 - 3
19. S. Skrypzak	W25	W8	L9	L3	L10	D20	2½-3½
20. R. Pawley	L3	W16	L15	L11	W29	D19	2½-3½
21. V. Fagin	L7	L23	W22	L17	D25	W30	2½-3½
22. T. Devine	L11	L9	L21	D25	W30	W29	2½-3½
23. W. Teal	L13	W21	W29	L1	L9	L18	2 - 4
24. A. Schultz	BYE	L7	W18	L14	L26	L10	2 - 4
25. S. Vigneau	L19	L14	L10	D22	D21	W28	2 - 4
26. D. Choate	L8	L18	L27	W30	W24	L15	2 - 4
27. D. Reeb	L4	L29	W26	L16	W28	L17	2 - 4
28. B. Mueller	W31	L6	L11	L12	L27	L25	1 - 5
29. K. Ogden	L17	W27	L23	L18	L20	L22	1 - 5
30. R. Allen	L15	L10	L16	L26	L22	L21	0 - 6
31. R. Stoutenboro	L28	-	-	-	-	-	0 - 6

## WILCOX GOLDEN GATE CLUB CHAMPION

Rex Wilcox won handily in the 1966 Golden Gate Club Championship, an 8 round Swiss held at the Broadmoor Hotel in San Francisco during October and November. Wilcox swept through his opposition and finished 1½ points ahead of second place Frank Thornally. The tournament was directed by Alan W. Bourke.

## GOLDEN GATE CLUB CHAMPIONSHIP, 1966

	1	2	3	4	5	6	7	8	Score
1. R. Wilcox	W14	W5	W7	W3	W2	W6	D4	W8	7½ - ½
2. F. Thornally	W13	W11	W6	D7	L1	W5	W10	D4	6 - 2
3. P. Dahl	D6	W10	W15	L1	W8	L4	W5	W9	5½-2½
4. H. Gross	W8	L7	W9	L5	W14	W3	D1	D2	5 - 3
5. L. Stevens	W9	L1	W14	W4	W7	L2	L3	W6	5 - 3
6. N. Nielsen	D3	W17*	L2	W11	W13	L1	W7	L5	4½-3½
7. A. Palmin	W12	W4	L1	D2	L5	D8	L6	W16	4 - 4
8. C. Huneke	L4	D15	W10	W12	L3	D7	W16	L1	4 - 4
9. C. Wilson	L5	W13	W4	W17*	W10	L14	W12	L3	4 - 4
10. M. Goodall	W17*	L3	L8	BYE	L9	W11	L2	W14	4 - 4
11. R. Freeman	W16	L2	D12	L6	W15	L10	W14	D13	4 - 4
12. G. Lutz	L7	BY	D11	L8	L16	W13	L9	W15	3½-4½
13. I. Frank	L2	L9	BYE	W16	L6	L12	W15	D11	3½-4½
14. B. Gross	L1	W16	L5	W15	L4	W9	L11	L10	3 - 5

## GOLDEN GATE CLUB CHAMPIONSHIP, 1966 (Continued)

	1	2	3	4	5	6	7	8	Score
15. D. Nason	BYE	D8	L3	L14	L11	W16	L13	L12	2½-5½
16. H. Cusack	L11	L14	D17	L13	W12	L15	L8	L7	1½-6½
17. R. Blakemore	L10*	L6*	D16	L9*	WITHDREW				½-7½

## TROY WINS SAN GABRIEL VALLEY OPEN

Allan Troy made a perfect 6-0 score at Pasadena in the Fall to win the \$50 first prize in The San Gabriel Valley Open. Trophies were won by Ben Kakimi, Neilen Hultgren, A. Carpenter, R. Killgrove and A. Vineck. The tournament was directed by Leslie Simon. According to Gordon Barrett this tournament in its 19th year, is the oldest regional event in southern California.

## 19TH SAN GABRIEL VALLEY OPEN

	1	2	3	4	5	6	Score
1. A. Troy	W32	W11	W8	W9	W3	W4	6 - 0
2. B. Kakimi	W21	W17	W6	L3	W13	W9	5 - 1
3. N. Hultgren	W22	W18	D7	W2	L1	D5	4 - 2
4. A. Carpenter	W13	W19	L9	W31	W6	L1	4 - 2
5. R. Killgrove	L29	W23	W24	D18	W14	D3	4 - 2
6. A. Vinock	W12	W27	L2	W11	L4	W17	4 - 2
7. J. Earnest	W31	W16	D3	W14	L9	D8	4 - 2
8. S. Morford	W30	W29*	L1	D27	W22	D7	4 - 2
9. A. Larsen	W36	W28	W4	L1	W7	L2	4 - 2
10. D. Young	D15	L14	D33	W32	W27	W19	4 - 2
11. M. Thomason	W38	L1	W30	L6	W24	W22	4 - 2
12. S. Katona	L6	W38	W26	L22	W28	W18	4 - 2
13. J. Tindall	L4	W36	W29	W28	L2	W20	4 - 2
14. B. McClure	D26	W10	W25	L7	L5	W16	3½-2½
15. R. Potts	D10	L25	L22	W36*	W26	W28	3½-2½
16. E. Adams	W23	L7	L18	W26	W31	L14	3 - 3
17. R. Wilson	W37	L2	L31	W30	W23*	L6	3 - 3
18. G. Boehm	W35	L3	W16	D5	D19	L12	3 - 3
19. C. Chrones	W20	L4	D27	W25	D18	L10	3 - 3
20. R. Cohan	L19	L31	W38	W34	W25	L13	3 - 3
21. M. Cook	L2	L24	L32	W38*	W34	W27	3 - 3
22. B. Davidson	L3	W35*	W15	W12	L8	L11	3 - 3
23. R. Peterson	L16	L5	W36	W29*	L17*	W33	3 - 3
24. H. Rader	L28	W21	L5	W33	L11	W31	3 - 3
25. R. Walmisley	D33	W15	L14	L19	L20	W30*	2½-3½
26. R. Kotz	D14	W33	L12	L16	L15	W32	2½-3½
27. D. Eilmes	W34	L6	D19	D8	L10	L21	2 - 4

## 19TH SAN GABRIEL VALLEY OPEN (continued)

	1	2	3	4	5	6	Score
28. T. Mishler	W24	L9	W34	L13	L12	L15	2 - 4
29. G. Olsson	W5	L8*	L13	L23*	L30*	W34	2 - 4
30. E. Nilsson	L8	W32	L11	L17	W29*	L25*	2 - 4
31. G. Chan	L7	W20	W17	L4	L16	L24	2 - 4
32. M. Cowdrey	L1	L30	W21	L10	W33	L26	2 - 4
33. G. Bottlik	D25	L26	D10	L24	L32	L23	1 - 5
34. R. Williams	L27	W37*	L28	L20	L21	L29	1 - 5
35. W. Thornton	L18	L22*	-	-	-	-	0 - 6
36. M. Scott	L9	L13	L23	L15*	-	-	0 - 6
37. D. Hoier	L17	L34*	-	-	-	-	0 - 6
38. R. Margolin	L11	L12	L20	L21*	-	-	0 - 6

## GROSS WINS 1966 CASTLE CLUB CHAMPIONSHIP

Henry Gross added another Castle Chess Club Championship to his collection in 1966. His  $8\frac{1}{2}$ - $\frac{1}{2}$  score led the field by  $2\frac{1}{2}$  points. Gross now has his name on the perpetual trophy 11 times! There was a battle for second place between Guthrie McClain, Chet Stamer and Bob Burger, and with four games undecided in December, some unplayed and some adjourned, the membership voted to call them all draws. The cross table:

## CASTLE CHESS CLUB CHAMPIONSHIP, 1966

	1	2	3	4	5	6	7	8	9	10	Score
1. H. Gross	X	$\frac{1}{2}$ *	1	1	1	1	1	1	1	1	$8\frac{1}{2}$ - $\frac{1}{2}$
2. G. McClain	$\frac{1}{2}$ *	X	$\frac{1}{2}$ *	$\frac{1}{2}$ *	$\frac{1}{2}$	1	1	$\frac{1}{2}$	1	$\frac{1}{2}$	6 - 3
3. C. Stamer	0	$\frac{1}{2}$ *	X	$\frac{1}{2}$ *	1	1	0	1	1	1	6 - 3
4. R. Burger	0	$\frac{1}{2}$ *	$\frac{1}{2}$ *	X	1	1	$\frac{1}{2}$ *	1	0	1	$5\frac{1}{2}$ - $3\frac{1}{2}$
5. R. Freeman	0	$\frac{1}{2}$	0	0	X	$\frac{1}{2}$	1	$\frac{1}{2}$	0	1	$3\frac{1}{2}$ - $5\frac{1}{2}$
6. L. Talcott	0	0	0	0	$\frac{1}{2}$	X	1	$\frac{1}{2}$	1	$\frac{1}{2}$	$3\frac{1}{2}$ - $5\frac{1}{2}$
7. S. Van Gelder	0	0	1	$\frac{1}{2}$ *	0	0	X	1	1	0	$3\frac{1}{2}$ - $5\frac{1}{2}$
8. C. Wilson	0	$\frac{1}{2}$	0	0	$\frac{1}{2}$	$\frac{1}{2}$	0	X	1	1	$3\frac{1}{2}$ - $5\frac{1}{2}$
9. G. Farly	0	0	0	1	1	0	0	0	X	1	3 - 6
10. Dr. R. Hultgren	0	$\frac{1}{2}$	0	0	0	$\frac{1}{2}$	1	0	0	X	2 - 7

## TAYLOR EL SEGUNDO CHAMPION FOR 1966

Robin Taylor of Los Angeles won the El Segundo title in November by a  $5\frac{1}{2}$ - $\frac{1}{2}$  score. Don Wildschutz of Gardena was second 5 - 1 and William Neel (Hawthorne), Jack Kliger (Los Angeles) and Henry Walpuski (El Segundo) tied for third place. The tournament was directed by Henry Shipin.

## EL SEGUNDO CHAMPIONSHIP, 1966

	1	2	3	4	5	6	Score
1. R. Taylor	W5	W14	W7	D2	W3	W6	5½-½
2. D. Wildschutz	W9	W3	W6*	D1	D4	W8	5 - 1
3. W. Neel	W17	L2	W11	W16	L1	W12	4 - 2
4. J. Kliger	W10	L16	W12	D7	D2	W9	4 - 2
5. H. Walpuski	L1	W22	D9	W14	D6	W13	4 - 2
6. L. Buote	W18	W8	L2*	W20	D5	L1	3½-2½
7. C. Whitman	W12	W11	L1	D4	L9	W16	3½-2½
8. H. Cillers	W21	L6	D14	W18	W16	L2	3½-2½
9. J. Baldwin	L2	W10	D5	W15	W7	L4	3½-2½
10. J. Strauss	L4	L9	L18	W19	W22	W17	3 - 3
11. J. Nanassy	W20	L7	L3	W22	L13	W15	3 - 3
12. A. Vorderstrasse	L7	W13	L4	W17	W14	L3	3 - 3
13. J. Porter	L14	L12	W19	W21	W11	L5	3 - 3
14. R. Kondel	W13	L1	D8	L5	L12	W18	2½-3½
15. H. Shipin	D22	L20	W17	L9	D18	L11	2 - 4
16. E. Fagan	W19	W4	L20	L3	L8	L7	2 - 4
17. A. Dahm	L3	W19	L15	L12	W21	L10	2 - 4
18. D. Swander	L6	D21	W10	L8	D15	L14	2 - 4
19. B. Glazer	L16	L17	L13	L10	BYE	W22	2 - 4
20. J. Barnard	L11	W15	W16	L6	-	-	2 - 4
21. B. McGrann	L8	D18	L22	L13	L17	BYE	1½-4½
22. Z. Zadrozny	D15	L5	W21	L11	L10	L19	1½-4½

## ALLEN WINS ATOMICS INTERNATIONAL TITLE

Bill Allen won a convincing victory in the Atomics International Club championship, held in October and November. Allen was 1½ points ahead of his nearest competition.

## ATOMICS INTERNATIONAL CHAMPIONSHIP, 1966

	1	2	3	4	5	6	7	Score
1. W. Allen	W9	W18	W8	W5	W7	W2	D4	6½-½
2. H. Kolin	W17	D6	D5	W13	W3	L1	W7	5 - 2
3. T. Lajcik	W13	W19	D7	D6	L2	W12	W8	5 - 2
4. F. Marshall	L5	W9	W19	D12	W16	W6	D1	5 - 2
5. C. Warner	W4	W15	D2	L1	L12	W13	W10	4½-2½
6. M. Ek	W16	D2	W15	D3	D8	L4	W12*	4½-2½
7. G. Barrett	W23	W11	D3	W10	L1	D8	L2	4 - 3
8. J. Gysbers	W14	W10	L1	W11	D6	D7	L3	4 - 3
9. J. Freibergs	L1	L4	W22	W24	W15	L10	W18*	4 - 3
10. W. Gehman	W22	L8	W18	L7	W17	W9	L5	4 - 3
11. R. McKisson	W24	L7	W21	L8	L14	W19	W15	4 - 3
12. W. Thomson	L15	W23	W16	D4	W5	L3	L6*	3½-3½

## ATOMICS INTERNATIONAL CHAMPIONSHIP, 1966 (continued)

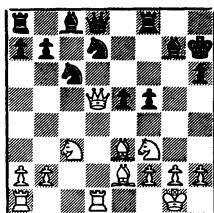
	1	2	3	4	5	6	7	Score
13. W. Hall	L3	D20	W17	L2	W21	L5	W19	3½-3½
14. W. Korst	L8	L21	W24	D19	W11	L15	W20	3½-3½
15. P. Romo	W12	L5	L6	W21	L9	W14	L11	3 - 4
16. Eichelberger	L6	W24	L12	W20	L4	L18	W22*	3 - 4
17. L. Wheeler	L2	W22	L13	W18	L10	L20	W23	3 - 4
18. J. Armstrong	W20	L1	L10	L17	W23	W16	L9*	3 - 4
19. K. Forrest	W21	L3	L4	D14	W20	L11	L13	2½-4½
20. H. Pearlman	L18	D13	W23	L16	L19	W17	L14	2½-4½
21. L. Bulgier	L19	W14	L11	L15	L13	L22	W24	2 - 5
22. J. Godwin	L10	L17	L9	L23	W24	W21	L16*	2 - 5
23. Joe Armstrong	L7	L12	L20	W22	L18	L24	L17	1 - 6
24. J. Mastous	L11	L16	L14	L9	L22	W23	L21	1 - 6

GAME OF THE MONTH

The score table of a tournament has a certain finality which is not reflected in the actual play. In the last round of the Central California Championship - which qualified one player to the State Championship - Ray Schutt had to win his game in order to take first prize. Early in the game, this looked easy. After the 16th move Q-Q5, a neat centralizing idea, Black's position seemed on the verge of collapse. White soon won material, but, as usually happens the resulting loss of time allowed Black to build up a serious counter-attack. Baroudi was typically resourceful - in the 2nd diagramed position, White had to cope with several threats. He managed to do this by opening up the K-side and, in a hair-raising finish, managed to make his material superiority felt. It was all worth it.

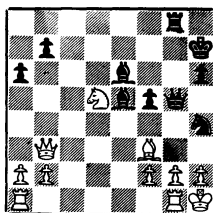
CENTRAL CALIFORNIA OPEN, OCTOBER 30, 1966Game No. 958 - Sicilian Defense

White	Black		
R. Schutt	Z Baroudi		
1. Kt-KB3	P-KKt3	9. B-KKt5	P-KR3
2. P-K4	P-QB4	10. B-KB4	Kt-Q2
3. P-B3	B-Kt2	11. Q-Q2	K-R2
4. P-Q4	PxP	12. KR-Q1	P-K4
5. PxP	P-Q3	13. B-K3	P-B4
6. Kt-B3	Kt-QB3	14. KPxP	KtPxP
7. B-K2	Kt-B3	15. PxP	PxP
8. 0-0	0-0	16. Q-Q5	



- |           |         |
|-----------|---------|
| 16. ...   | Kt-K2   |
| 17. Q-Kt5 | P-R3    |
| 18. Q-Kt3 | Kt-KKt3 |
| 19. Kt-Q5 | P-K5    |
| 20. B-Kt6 | KtxB    |
| 21. KtxKt | Q-B3    |
| 22. KtxR  | PxKt    |
| 23. BxBP  | Kt-R5   |
| 24. Kt-B7 | Q-Kt4   |
| 25. K-R1  | B-K4    |
| 26. Kt-Q5 | R-Kt1   |
| 27. R-Kt1 | B-K3    |

Black's position looks well worth the loss of material, but White manages to find the answer time after time.



- |             |         |
|-------------|---------|
| 28. Q-K3    | KtxB    |
| 29. PxKt    | Q-R4    |
| 30. Kt-B4   | BxKt    |
| 31. QxB4    | R-Q1    |
| 32. QR-Q1   | RxR     |
| 33. RxR     | K-Kt3   |
| 34. R-Kt1ch | K-B3    |
| 35. Q-Q4ch  | K-B2    |
| 36. Q-Kt7ch | K-K1    |
| 37. Q-Kt6ch | QxQ     |
| 38. RxQ     | BxP     |
| 39. RxKRP   | B-Q4    |
| 40. K-Kt2   | K-Q2    |
| 41. K-Kt3   | B-K3    |
| 42. K-B4    | K-Q3    |
| 43. P-R4    | P-Kt4   |
| 44. P-R5    | P-R4    |
| 45. R-R8    | Resigns |

#### WHO WAS MAKOVETZ? by Irving Rivise

Recently while browsing in "The Year Book of Chess" for 1910 I noticed a section entitled "Scores in the Chief International Tournaments from 1851 to 1909."

As my eyes idly ran down the various cross tables and results I warmly remembered some of my old old favorites - Anderssen, Louis Paulsen, Steinitz, Tarrasch, Lasker and a host of other chess immortals as they claimed victory after victory and yet the Graz Tournament of 1890 was headed by the name "Makovetz" with a score of 5-1 (two draws vs. Bauer and Berger), ahead of Lasker, Marco and Albin.

On the very next page the Dresden 1892 tournament showed Tarrasch the winner with 12 points followed by Makovetz and Porges tied for second with 10½ ahead of (to name a few greats) Marco, Bardeleben, Blackburne, Mises, etc.

Nowhere else did Makovetz's name appear but still these two results showed he must have had something on the ball but I have never heard of him before - have you?

Steinitz in reporting the result of the Graz Tournament writes in his ICM "Herr J. Makowetz of Budapest, who has hitherto been unknown as a strong player, obtained chief honors."

That is all. So now then bibliophiles and historians -- who the devil was Makovetz?

White	Black		
<u>J. Makovetz</u>	<u>E. Lasker</u>	28. Kt-B1	Kt-K2
1. P-K4	P-K4	29. Kt-Q2	K-B2
2. Kt-KB3	Kt-QB3	30. Kt-Kt3	K-Kt3
3. B-B4	P-Q3	31. Q-KKt1	R-R1
4. P-B3	Q-B3	32. P-B5	KPxP
5. P-Q3	P-KR3	33. KPxP	Kt-B1
6. P-KR3	KKt-K2	34. P-B6	R-QKt1
7. O-O	P-KKt4	35. Q-KB1	K-R3
8. Kt-R2	Kt-Kt3	36. PxP	RxQKtP
9. Kt-R3	B-Q2	37. R-B6	Kt-K2
10. P-QKt4	P-KR4	38. P-R6	R-QKt3
11. P-B3	Kt-B5	39. RxBP	Kt-B4
12. Kt-Kt5	QR-B	40. RxR	QxR
13. Kt-R3	B-Kt2	41. Q-Q3	Kt-R6
14. Kt-B2	Kt-K2	42. Kt-B6	B-K2
15. P-Q4	R-Q	43. KtxRF	B-R5
16. P-QR4	Kt(2)-Kt3	44. Kt -B8	Q-Kt6
17. R-R2	Kt-R5	45. Q-K2	RxKtP
18. BxKt	KtxB	46. Kt-Q2	R-B4
19. R(1)-B2	R-R3	47. R-R1	RxKt
20. K-R	R-Kt3	48. P-R7	Q-Kt1
21. P-Kt5	B-K3	49. Kt-B1	R-B7
22. BxB	PxB	50. QxR	KtxQ
23. P-Q5	R-Q2	51. P-R8(Q)	QxQ
24. Kt-QKt4	R-Q	52. RxQ	Kt-K6
25. P-R5	B-B	53. KtxKt	PxKt
26. P-B4	R-Kt2	54. R-R2	K-Kt4
27. R(B2)-B2	Kt-Kt3	55. K-R2	B-B7
		56. P-Kt3	F-R5

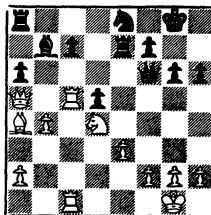
- 57. P-Kt4 B-K8
- 58. K-Kt2 B-B6
- 59. R-QB2 B-Q5
- 60. K-B1 K-B5
- 61. K-K2 P-K5
- 62. PxP KxP
- 63. R-B7 KxP
- 64. R-KR7 K-K5
- 65. RxRP Resigns

- 31. P-QKt4 P-Kt3
- 32. B-B2 R-Q2
- 33. B-R4 R-K2
- 34. B-B6
- 34. BxKt,QRxB; 35. RxP, RxR;
- 36. RxR, QxKt!; 36. QxR, R-QB!
- 34. ... BxB
- 35. RxB Q-Kt4
- 36. Kt-B3 Q-Kt5
- 37. QxQP R-Kt1
- 38. P-QR3 R-Kt3
- 39. R(6)-B4 Q-B1
- 40. P-KR3 R-Q2
- 41. Q-K5 R-K3
- 42. Q-B3 Q-Q1
- 43. Kt-Q4 R(3)-Q3
- 44. K-R2 Q-B3
- 45. Kt-B3 Q-K3
- 46. Q-K5 QxQ
- 47. KtxQ R(2)-K2
- 48. Kt-B6 R(K2)-Q2
- 49. Kt-Q4 K-B1
- 50. R-B5 R-KB3
- 51. K-Kt1 R(3)-Q3
- 52. P-B3 K-K2
- 53. R-K5ch K-B1
- 54. R(K)-QB5 R-Q1
- 55. K-B2 R(1)-Q2
- 56. R(1)-B2 R-K2
- 57. Kt-K2 R-Q6
- and drew on move 73

Dresden Tournament

White	Black
<u>S. Tarrasch</u>	<u>J. Makovetz</u>
1. P-Q4	P-Q4
2. P-QB4	P-K3
3. Kt-QB3	Kt-KB3
4. B-Kt5	B-K2
5. Kt-B3	P-QKt3
6. QR-B1	B-Kt2
7. P-K3	O-O
8. B-Q3	QKt-Q2
9. O-O	P-QR3
10. Q-K2	Kt-K5
11. B-B4	B-Q3
12. BxB	KtxB
13. PxP	PxP
14. Q-B2	P-KR3
15. Q-Kt3	Kt-B3
16. Kt-QR4	Kt-Q2
17. Kt-B3	Kt-B3
18. Kt-QR4	Kt-Q2
19. Kt-B3	Kt-B3
20. Kt-QR4	Kt-Q2
21. Kt-B5	PxKt
22. PxP	KtxP
23. RxKt	Q-K2
24. R-B2	KR-Kt1
25. Q-R3	K-B1
26. KR-B1	Kt-K1
27. Q-R5	K-Kt1
28. Kt-Q4	Q-B3
29. P-QKt3	R-Q1
30. R-B5	R-Q3

Position after 33. ... R-K2





CALIFORNIA STATE CHAMPIONSHIP, 1966

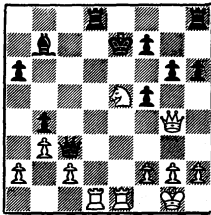
Game No. 959	- Ruy Lopez	30. RxQ	R-K1
White	Black	31. K-B1	R-K3
<u>E. Osbun</u>	<u>I. Rivise</u>	32. K-K2	P-Kt4
1. P-K4	P-K4	33. K-Q1	B-Kt2
2. Kt-KB3	Kt-QB3	34. R-Q8ch	K-R2
3. B-Kt5	P-QR3	35. R-QB8	Kt-R4
4. B-R4	Kt-B3	36. R-B5	Kt-B3
5. O-O	B-K2	37. Kt-Q2	K-Kt3
6. R-K1	P-QKt4	38. KtxP	P-B4
7. B-Kt3	O-O	39. P-B3	P-KR4
8. P-QR4	...	40. R-Q5	P-Kt5
This constitutes an "anti-		41. R-Q6	RxRch
Marshall" (8. P-B3, P-Q4).		42. KtxR	PxKP
8. ...	B-Kt2	43. PxKP	B-B1
9. P-Q3	...	44. Kt-B5	PxP
If 9. Kt-B3, Kt-Q5!		45. PxP	Kt-R4
9. ...	P-Q3	46. K-B2	K-B2
9. Kt-QR4 gives Black a good game		47. K-Q3	B-R6
after 10. KtxP, KtxB; 11. PxKt,		48. B-Kt6	Kt-Kt6
P-Q4- and Black also gets an		49. B-K3	Kt-R4
edge after 10. B-R2, P-Q3; 11.		50. P-B4	Kt-Kt2
P-B3, P-B4; 12. QKt-Q2, Q-B2;		51. B-Kt6	B-B1
13. Kt-B1, P-B5!		52. Kt-K3	B-Q3
10. Kt-B3	P-Kt5	53. Kt-Q5	K-Kt3
11. Kt-Q5	KtxKt	54. Kt-B7	P-R4
12. BxKt	Kt-R4	55. Kt-K6	K-B3
13. BxB	KtxB	56. Kt-Q8	B-B4
14. P-B3	P-QB4	57. KtxKt	BxB
15. P-Q4	Q-B2	58. P-B5	B-B2
16. B-K3	KtPxP	59. P-R4	K-K3
17. KtPxP	B-B3	60. K-B4	K-Q2
18. R-Kt1	Kt-R4	61. K-Q5	K-B1
19. PxBP	PxP	62. Kt-Q6ch	K-Q2
20. Q-Q5	QR-B1	63. Kt-B7	K-B1
21. KR-Q1	KR-Q1	64. KtxP	Resigns
22. Q-R2	RxRch		
23. RxR	R-Q1		
24. R-Q5	P-B5		
25. Q-Q2	R-Kt1		
26. P-R3	Kt-Kt6		
27. Q-Q1	P-R3		
28. R-Q7	Q-B3		
29. Q-Q5	QxQ		

It isn't often that the veteran master Rivise is saddled with a weakness (19. PxBP, PxP; 20. Q-Q5) and eventually succumbs with virtually no counterplay.

Game No. 960 - Sicilian Defense

White	Black
<u>R. Schutt</u>	<u>R. Kirby</u>
1. P-K4	P-QB4
2. Kt-KB3	P-K3
3. P-Q4	PxP
4. KtxP	P-QR3
5. Kt-QB3	P-QKt4
6. B-Q3	B-Kt2
7. O-O	Kt-K2
8. Q-R5	QKt-B3
9. Kt-B3	P-Kt3
10. Q-R3	P-R3
11. B-KB4	P-Kt5
12. Kt-QR4	Q-R4
13. P-QKt3	B-Kt2
14. QR-Q1	Kt-K4
15. BxKt	BxB
16. KtxB	QxKt
17. Kt-Kt6	R-Q1
18. Kt-B4	Q-B2
19. P-K5	Kt-B1
20. KR-K1	K-B1
21. Q-Kt4	P-Q4
22. PxP e.p.	KtxP
23. Q-Q4	K-K2
24. Kt-K5	Q-B6
25. Q-Kt4	Kt-B4
26. BxKt	KPxB

If 26. ... KtPxP; 27. Q-Kt7 wins quickly.

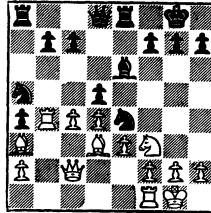


27. Kt-Q7ch	QxRch
28. RxQch	KxKt
29. QxQKtP	Resigns

SF BAY AREA CHAMPIONSHIP, 1966

Game No. 961 - Queen's Gambit

White	Black
<u>M. Wilkerson</u>	<u>L. O'Doan</u>
1. P-Q4	Kt-KB3
2. P-QB4	P-Q4
3. Kt-KB3	P-K3
4. Kt-QB3	B-Kt5
5. Q-Kt3	BxKtch
6. PxB	O-O
7. B-R3	R-K1
8. P-K3	P-QR4
9. B-Q3	P-R5
10. Q-B2	Kt-B3
11. PxP	PxP
12. O-O	Kt-K5
13. P-B4	B-K3
14. QR-Kt1	Kt-R4
15. R-Kt4	



15. ...	P-QB4
16. QPxP	KKtxQBP
17. BxPch	K-R1
18. R-Kt5	Kt-K5
19. BxKt	PxB
20. QxKP	P-B4
21. RxBP!	BxP
22. QxB	Q-B3
23. Q-QKt5	Q-B2?
24. Kt-Kt5	QxP
25. Q-KB5	Q-R5
26. P-Kt3	Resigns

Game No. 961 - French Defense

White	Black
<u>L. O'Doan</u>	<u>R. Trenberth</u>

- |            |        |
|------------|--------|
| 1. P-Q4    | P-K3   |
| 2. P-K4    | P-Q3   |
| 3. Kt-KB3  | P-KKt3 |
| 4. B-QB4   | P-KB3  |
| 5. O-O     | Q-K2   |
| 6. R-K1    | Q-Kt2  |
| 7. P-QKt3  | P-K4   |
| 8. PxP     | QPxP   |
| 9. B-Kt2   | Kt-B3  |
| 10. Kt-B3  | B-Q2   |
| 11. Kt-Q5  | O-O-O  |
| 12. P-QR4  | P-KKt4 |
| 13. Q-K2   | P-KR4  |
| 14. B-R3   | Kt-R3  |
| 15. Kt-K3  | P-Kt5  |
| 16. Kt-R4  | Kt-Q5  |
| 17. Q-B1   | BxB    |
| 18. RxB    | Q-Kt4  |
| 19. P-KKt3 | Kt-B6+ |
| 20. KtxKt  | PxKt   |
| 21. P-R4   | Q-Kt3  |
| 22. Kt-Q5  | QR-K1  |
| 23. R-K3   | P-B3   |
| 24. Kt-B3  | P-KB4  |
| 25. RxP    | PxP    |
| 26. R-K3   | B-B4   |
| 27. Q-Kt2  | Kt-Kt5 |
| 28. R-K1   | Kt-B3  |
| 29. P-QKt4 | R-Q1   |
| 30. P-Kt5  | P-B4   |
| 31. P-R5   | R-Q7   |
| 32. P-Kt6  | P-R3   |
| 33. B-Kt3  | KR-Q1  |
| 34. QR-R1  | QR-Q5  |
| 35. Kt-K2  | R-Q7   |
| 36. P-QB3  | P-K6   |
| 37. B-Q1   | Kt-K5  |
| 38. PxP    | KR-Q6  |
| 39. Q-B3   | Q-Kt5  |
| 40. R-KB1  | RxB    |
| 41. QxQ    | RxR+   |
| 42. RxR    | BxQ    |
| 43. R-B8+  | K-Q2   |

- |           |       |
|-----------|-------|
| 44. R-B7+ | K-K3  |
| 45. RxP   | R-Q8+ |
| 46. K-Kt2 | R-Q7  |
| 47. R-R7  | RxKt+ |
| 48. K-B1  | KtxP+ |
| 49. K-Kt1 | B-B6  |
| 50. RxP   | R-Kt7 |
|           | MATE  |

A good example of Trenberth's unorthodox style.

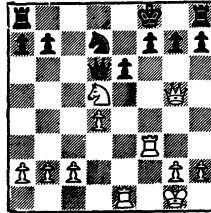
Game No. 962 - Caro Kann

White	Black
<u>G. Pickler</u>	<u>R. Rowland</u>

- |           |       |
|-----------|-------|
| 1. P-K4   | P-QB3 |
| 2. P-Q4   | P-Q4  |
| 3. Kt-QB3 | PxP   |
| 4. P-KB3  |       |

Transposing to the Blackmar-Diemer Gambit.

- |           |        |
|-----------|--------|
| 4. ...    | PxP    |
| 5. KtxP   | B-Kt5  |
| 6. B-QB4  | P-K3   |
| 7. O-O    | Kt-B3  |
| 8. B-KKt5 | B-K2   |
| 9. Q-Q2   | BxKt   |
| 10. RxB   | QKt-Q2 |
| 11. QR-K1 | Kt-Q4? |
| 12. BxB   | QxB    |
| 13. BxKt  | BPxB   |
| 14. KtxP  | Q-Q3   |
| 15. Q-Kt5 | K-B1   |



- |            |       |
|------------|-------|
| 16. RxPch  | KxR   |
| 17. R-B1ch | Kt-B3 |
- If 17. ... K-K1, then 18. QxP, R-KB1

19. RxRch, KtxR (not 19. ...QxR because of 20. Kt-B7ch, K-Q1; 21. KtxPch etc.) 20.. Kt-B7ch, K-Q1  
 21. KtxR, K-B1; 22.. Kt-B7! and White should win.

- 18. RxKtch! PxP
- 19. QxPch K-K1

A sad necessity. On 19. ...K-Kt1 follows 20. Kt-K7ch.

- 20. QxRch K-Q2
- 21. QxR ...

If Kt-B6ch, K-B3 with at least a draw.

- 21. ... QxKt
- 22. QxRP Q-K5
- 23. Q-R4ch K-K2
- 24. Q-Kt4ch K-B2
- 25. Q-Q2 K-Kt3

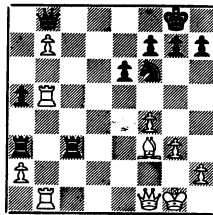
Even though Black's position is lost, he could have kept his hopes alive by avoiding the exchange of Queens.

- 26. Q-Q3 K-B4
- 27. P-Kt4ch K-B5
- 28. QxQch KxQ
- 29. P-B3 P-Kt4
- 30. K-B2 P-Kt5
- 31. P-QR4 PxP
- 32. FxP K-Q6
- 33. P-R5 KxP
- 34. P-R6 KxP
- 35. P-R7 P-K4
- 36. P=Q P-K5
- 37. Q-R7ch K-Q6
- 38. Q-K3ch K-B5
- 39. QxPch K-B4
- 40. QxP K-Q4
- 41. P-Kt5 K-K3
- 42. P-Kt6 K-B3
- 43. P-Kt7 K-B2
- 44. P=Qch K-B3

Resigns

Game No. 963 - Catalan System

	White	Black
E. Syrett		R. Menaster
1.	P-Q4	P-Q4
2.	Kt-KB3	P-QB4
3.	P-KKt3	Kt-KB3
4.	B-Kt2	B-B4
5.	O-O	P-K3
6.	P-B4	B-K2
7.	QPxP	BxKt
8.	RxB	BxP
9.	P-QKt4	B-K2
10.	Kt-K5	O-O
11.	B-K3	Kt-B3
12.	KtxKt	PxKt
13.	P-B4	P-QR3
14.	Q-B2	P-QR4
15.	P-Kt5	BPxP
16.	PxKtP	R-B1
17.	Q-Q3	Kt-Kt5
18.	B-Q4	B-B4
19.	BxB	RxB
20.	P-Kt6	Q-Kt1
21.	R-Kt5	R1-B1
22.	B-B3	Kt-B3
23.	R1-Kt1	Kt-Q2
24.	P-K4	R-B6
25.	Q-B1	PxP
26.	BxP	Kt-B3
27.	B-B3	R-R6
28.	P-Kt7	R1-B6



29. Q-B2 RxB

30. Q-B5	RR-B6	33. Q-K2	K-B1
31. RxP	RxQ	34. Kt-Kt2	Kt-B3
32. RxR	Kt-K1	35. P-Kt4	Q-B6
33. R-B8	Q-R2+	36. Q-QB2	QxQ
34. K-R1	R-B8+	37. BxQ	K-K2
35. K-Kt2	R-B7+	38. P-KR4	Kt-Q2
36. K-R3	K-B1	39. Kt-K3	Kt-Kt3
37. P-Kt8-Q	Q-Q2	40. P-B5	Kt-R4
38. R-Q1	Q-R5	41. B-Q3	Kt-Q2
39. RxKt+	Resigns.	42. K-B4	Kt-K4
		43. B-K2	P-R3
		44. B-B1	K-Q2
		45. P-B6	K-B2
		46. P-R5	Kt-Kt2
		47. Pxp	Pxp
		48. P-Kt5	P-KR4
		49. B-R3	K-Kt3
		50. B-K6	Kt-Q1
		51. Kt-Kt2	K-R4
		52. Kt-R4	K-Kt5
		53. B-Kt8	KxP
		54. B-R7	KxP
		55. KtxP	Kt-K3+
		56. K-B5	Kt-Q5+
		57. K-B4	Kt-K3+
		58. K-B5	Kt-Q5+
		59. K-B4	KtxKt+
		60. BxKt	K-K3
		61. BxP	P-B5
		62. K-K3	Kt-B3
		63. B-Kt4+	K-B2
		64. B-B3	Kt-K4
		65. B-Q5+	K-Kt3
		66. K-Q4	KxP
		67. P-B7	Kt-Q2
		68. BxP	K-B3

Game No. 964 - Kings Indian

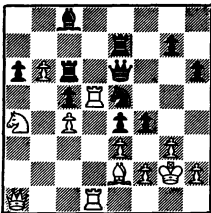
White		Black	
<u>N. Wood</u>	<u>D. Blohm</u>		
1. P-QB4	P-KKt3	46. P-R5	Kt-Kt2
2. Kt-KB3	Kt-KB3	47. Pxp	Pxp
3. P-KKt3	B-Kt2	48. P-Kt5	P-KR4
4. B-Kt2	0-0	49. B-R3	K-Kt3
5. 0-0	P-Q3	50. B-K6	Kt-Q1
6. P-Q4	Kt-B3	51. Kt-Kt2	K-R4
7. P-Q5	Kt-QR4	52. Kt-R4	K-Kt5
8. QKt-Q2	P-B4	53. B-Kt8	KxP
9. P-K4	P-QR3	54. B-R7	KxP
10. R-Kt1	P-QKt4	55. KtxP	Kt-K3+
11. P-Kt3	B-Kt5	56. K-B5	Kt-Q5+
12. P-KR3	BxKt	57. K-B4	Kt-K3+
13. BxB	R-Kt1	58. K-B5	Kt-Q5+
14. Q-B2	PxP	59. K-B4	KtxKt+
15. Pxp	RxR	60. BxKt	K-K3
16. QxR	Q-B2	61. BxP	P-B5
17. Q-B2	R-Kt1	62. K-K3	Kt-B3
18. B-K2	Kt-Q2	63. B-Kt4+	K-B2
19. P-B4	Kt-Kt3	64. B-B3	Kt-K4
20. K-Kt2	P-K3	65. B-Q5+	K-Kt3
21. R-B3	PxP	66. K-Q4	KxP
22. KPxP	R-K1	67. P-B7	Kt-Q2
23. Kt-B1	Kt-Q2	68. BxP	K-B3
24. B-Kt2	BxB		
25. QxB	Q-Kt3		
26. Q-B2	Q-Kt5		
27. K-B2	Kt-B3		
28. R-K3	RxR		
29. KtxR	Q-B6		
30. B-Q3	Q-Q5		
31. K-B3	Kt-R4		
32. Q-Q2	Kt-QKt2		

DRAW AGREED

GOLDEN GATE CHAMPIONSHIPGame No. 965 - Polish

White		Black	
<u>A. Palmin</u>		<u>H. Gross</u>	
1. P-QKt4		P-R4	
2. B-Kt2		P-Q3	
3. P-QB4		P-KB4	
4. P-K3		Kt-KB3	

- 5. Kt-KB3 B-K2
- 6. P-Q4 F-K5
- 7. KKt-Q2 O-O
- 8. Kt-QB3 F-B3
- 9. P-QR4 QKt-Q2
- 10. Q-Kt3 K-R1
- 11. B-K2 Q-K1
- 12. P-R5 Q-Kt3
- 13. R-KKt1 F-B4
- 14. QPxP PxP
- 15. P-Kt5 B-Q3
- 16. P-Kt3 B-B2
- 17. Q-R3 P-Kt3
- 18. PxP BxP
- 19. Kt-R4 B-Kt2
- 20. Kt-Kt3 KR-B1
- 21. B-QB3 Kt-Kt5
- 22. Kt-R5 BxKt
- 23. BxB KKt-K4
- 24. R-Q1 Q-K3
- 25. B-QB3 P-QR3
- 26. P-Kt6 R-B3
- 27. Q-R1 R-K1
- 28. K-B1 P-R3
- 29. K-Kt2 R-K2
- 30. BxKt KtxB
- 31. R-Q8ch K-R2
- 32. KR-Q1 B-B1
- 33. QR-Q5 P-B5



- 34. RxKt P-B6ch
- 35. K-Kt1 QxR
- 36. QxQ RxQ
- 37. B-B1 R-K2
- 38. R-Q5 R-Kt2
- 39. P-R4 K-Kt3

- 40. K-R2 K-B3
- 41. B-R3 BxB
- 42. KxB P-Kt4
- 43. K-Kt4 PxP
- 44. PxP K-Kt3
- 45. P-R5ch K-Kt2
- 46. K-B4 R-K2
- 47. R-K5 R(3)-K3
- 48. RxR RxR
- 49. F-K7 R-K1
- 50. Kt-B6?! ..

In this desperate position Black allows his opponent to make a move even better than the rules allow. However, after 50. KtxP, R-QKt1; 51. KxP followed by K-Q5 and B6 it's all over.

- 50. ... P-R4
- 51. P-Kt8(Q) RxQ
- 52. KtxR Resigns

Game No. 966 - Robatsch Defense

White	Black
<u>I. Frank</u>	<u>F. Thornally</u>
1. P-Q4	P-KKt3
2. P-QB4	B-Kt2
3. Kt-QB3	F-Q3
4. P-K4	Kt-QB3
5. B-K3	P-K4
6. KKt-K2	Kt-R3
7. P-B3	P-B4
8. P-Q5	Kt-K2
9. P-KKt3	O-O
10. B-Kt2	Kt-B2
11. Q-Q2	P-B4
12. P-QR3	B-Q2
13. O-O	R-B1
14. QR-B1	K-R1
15. K-R1	Kt-Kt1
16. PxP	PxP
17. P-B4	Kt-B5
18. FxP	KtxKP
19. Kt-Kt5(?)	KtxBP
20. RxKt	BxKt
21. R-KR4	Kt-Kt5
22. B-Kt5	Q-K1

23. R-K1 Kt-B7+  
 24. K-Kt1 Kt-Q6  
 25. R-Kt1 Q-Kt3  
 26. B-B3 P-KB5!  
 27. Kt-B3 B-Q5+  
 28. K-Kt2 Kt-K4  
 29. BxP BxKt  
 30. QxB RxB  
 31. R-K1 RxB  
 Resigns

Game No. 967 - Grunfeld

White	Black
<u>R. Wilcox</u>	<u>H. Gross</u>
1. P-Q4	Kt-KB3
2. P-QB4	P-KKt3
3. Kt-QB3	P-Q4
4. PxP	KtxP
5. P-K4	KtxKt
6. PxKt	B-Kt2
7. B-QB4	P-QB4
8. Kt-K2	0-0
9. 0-0	Kt-B3
10. B-K3	PxP
11. PxB	Kt-R4
12. B-Q3	P-Kt3
13. Q-Q2	B-Kt2
14. B-R6	Q-Q3
15. BxB	KxB
16. P-B4	Kt-B3
17. B-Kt5	KR-Q
18. QR-Q	Q-Kt5
19. Q-Q3	P-QR3
20. R-Kt	Q-R4
21. B-B4	QR-B
22. P-Q5	K-Kt
23. K-R	Kt-Kt
24. P-B5	Kt-Q2
25. PxB	RPxP
26. B-Kt3	Kt-B3
27. Q-KB3	R-B
28. QR-Q	QR-Q
29. P-Q6!	BxB
30. PxB?	BxQ
31. RxB	R-K
32. RxB	Q-K8ch

33. Kt-Kt QxP  
 34. RxRch KtxR  
 35. RxP QxR  
 36. Kt-B3 Kt-Q3  
 37. Kt-K5 QxB  
 38. PxB K-Kt2  
 39. K-Kt Kt-K5  
 40. Kt-B4 P-Kt4  
 41. Kt-R5 K-B3  
 42. K-B K-K4  
 43. K-K2 K-Q5  
 44. Kt-B6ch K-B4  
 45. K-K3 KxKt  
 46. KxKt K-B4  
 47. P-R4 P-R4  
 48. P-KKt4 P-R5  
 49. PxB PxP  
 DRAW

Game No. 968 - King's Indian Rev.

White	Black
<u>F. Thornally</u>	<u>R. Freeman</u>
1. P-K4	P-K3
2. P-Q3	P-Q4
3. Kt-Q2	P-QB4
4. KKt-B3	Kt-QB3
5. P-KKt3	B-K2
6. B-Kt2	PxB
7. PxB	Kt-B3
8. 0-0	0-0
9. Q-K2	P-K4
10. P-B3	Q-B2
11. Kt-B4	B-Kt5
12. Kt-K3	QR-Q1
13. KtxB	KtxKt
14. B-R3	Kt-B3
15. Kt-R4	KR-K1
16. Kt-B5	B-B1
17. B-Kt5	Kt-K2
18. Kt-R6ch	PxKt
19. BxKt	R-R1
20. P-KB4	B-Kt2
21. Q-Kt4	Kt-Kt3
22. BxB	KxB
23. P-B5	P-KR4
24. QxB	Kt-B1

25. P-B6ch K-R1  
 26. Q-R6 Kt-K3  
 27. B-B5 RESIGNS

CASTLE CLUB CHAMPIONSHIP 1966Game No. 969 - Sicilian Defense

White		Black	
<u>H. Gross</u>		<u>R. Hultgren</u>	
1. P-K4		P-QB4	
2. Kkt-B3		Kt-QB3	
3. P-Q4		PxP	
4. KtxP		P-Q3	
5. B-B4		Kt-B3	
6. QKt-B3		P-KKt3	
7. KtxKt		PxKt	
8. P-K5		PxP	
9. Bxpch		RESIGNS	

Game No. 970 - Sicilian Defense

White		Black	
<u>H. Gross</u>		<u>R. Freeman</u>	
1. P-K4		P-QB4	
2. Kt-KB3		Kt-QB3	
3. P-Q4		PxP	
4. KtxP		P-K4	
5. Kt-Kt3		Kt-B3	
6. Kt-B3		P-QR3	
7. B-Q3		B-K2	
8. B-K3		P-Q4	
9. PxP		KtxP	
10. KtxKt		QxKt	
11. O-O		O-O	
12. Bxpch		RESIGNS	

Game No. 971 - Sicilian Defense

White		Black	
<u>R. Burger</u>		<u>Dr. Hultgren</u>	
1. P-K4		P-QB4	
2. Kt-KB3		Kt-QB3	
3. P-Q4		PxP	
4. KtxP		P-Q3	
5. P-QB4		P-KKt3	
6. QKt-B3		B-Kt2	
7. B-K3		Kt-B3	
8. B-K2		O-O	
9. P-B3		B-Q2	
10. Q-Q2		R-E1	
11. R-QB1		P-QR3	

12. O-O KtxKt  
 13. BxKt B-K3  
 14. P-QKt3 Q-R4  
 15. KR-Q1 KR-Q1  
 16. K-R1 Kt-Q2  
 17. Kt-Q5 QxQ  
 18. KtxPch K-B1  
 19. BxBch KxB  
 20. RxQ R-B4  
 21. RxP RESIGNS

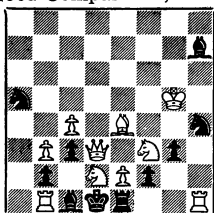
Game No. 972 - Ruy Lopez

White		Black	
<u>G. Farly</u>		<u>R. Burger</u>	
1. P-K4		P-K4	
2. Kt-KB3		Kt-QB3	
3. B-Kt5		P-QR3	
4. B-R4		Kt-B3	
5. O-O		P-QKt4	
6. B-Kt3		P-Q3	
7. R-K1		B-Kt5	
8. P-QB3		Q-Q2	
9. P-Q3		B-K2	
10. B-K3		Kt-KR4	
11. OKt-Q2		P-Kt4	
12. P-Q4		Kt-B5	
13. P-QR4		P-Kt5	
14. Q-B2		KR-Kt1	
15. BPxP		B-R6	
16. P-Kt5		Kt-Kt5	
17. Q-B4		P-Q4	
18. KPxP		BxP	
19. P-Q6		BxP	
20. PxBP		B-B1	
21. Kt-K4		R-Kt3	
22. Kt-B6 ch		RxKt	
23. PxR		BxKt	
24. BxKtch		K-Q1	
25. KR-Q1		B-Q3	
26. BxB		Kt-O4	
27. B-K7 ch		K-B1	
28. RxBKt		Q-R6	
29. RxP		K-Kt2	
30. R-QB1		R-B1	
31. PxBch		K-R1	
32. R-Kt3		Q-B4	
33. RxB		RESIGNS	



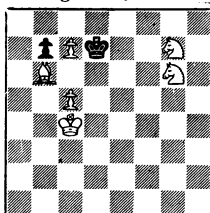
TASKS:

No. 255  
Murray Marble  
Good Companions, 1914



Mate in 2

No. 256  
Lasker's Chess  
Magazine, 1906



Mate in 2

We are indebted to Fritz Leiber and Dean Dickensheet (of the Baker Street Irregulars) for No. 255 and to Irving Rivise for No. 256 and also for the solution to No. 255.

No. 255 appears in *The Adventure of the Strange Sound*, by Alain C. White. The story concerns Sherlock Holmes, who asks his client: "And what sort of a problem is it?"

"A very poor one... this problem isn't even 'sound.'" Holmes lay back in his chair and laughed convulsively. "You must look again, Mr. Tappin; you have been favored with one of the World's great problems. Believe me, it is quite sound, yes, it is strangely sound..."

No. 256 appears at the end of a humorous story entitled "Fatal Chess Problem" which appeared on pp. 167-169 of the February, 1906, issue of *Lasker's Chess Magazine*.

Both are "catch" problems. No. 255 was in the April 1st issue of the magazine, and is based upon an old rule which was in force in Sherlock Holmes' day. No. 256 specifically refers to Rule XXI in Staunton's Handbook.