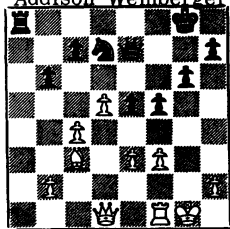


THE CALIFORNIA CHESS REPORTER

JULY - AUGUST, 1969
VOLUME XIX, NUMBER 1

Addison-Weinberger



With 20. P-Q6, White
won a difficult ending.

FROM: 244 Kearny Street, 4th Floor
San Francisco, Calif. 94108

TO:

* * *

TOURNAMENT ANNOUNCEMENTS

* * *

EL SEGUNDO AMATEUR OPEN

Date: August 16-17, 1969 (5-Round Swiss)
Place: Recreation Park Clubhouse, 300 East Pine Ave., El Segundo
Entry Fee: \$7.50; Juniors, \$4.00.
Director: Douglas Linn
Schedule: Round 1: 10 am Saturday; Round 2: 2 pm Saturday;
Round 3: 7 pm Saturday (45 moves in 2 hours); Round 4:
10 am Sunday; Round 5: 3 pm Sunday (40 moves in 2 hours)

CALIFORNIA OPEN

Date: August 30-September 1, 1969 (7-Round Swiss)
Place: Casa Munras Garden Hotel, Monterey
Entry Fee: \$15 (\$13 if mailed by August 25)
Prizes: \$1,500 Total: 1-\$500, 2-\$250, 3-\$150, Six Class Prizes
of \$100 each: Expert, A, B, C, D and unrated, & Junior.
Schedule: Final Registration 8:30-9:30 am August 30; Round 1 10 am.
3 rounds August 30, 2 rounds August 31 and September 1.
Rate of play: 45 moves in 1½ hours for the first two rounds,
45 moves in 2 hours for the last five rounds.

Tournament

Director: Michael Goodall

Inquiries &

Registration: Col. Charles J. Daly
c/o P. O. Box 261
Monterey, CA 93940

Reservations: The Casa Munras will hold rooms until 10 pm Friday night
for reservations made through Col. Daly or the Chess
Reporter. Otherwise, a deposit will be necessary. Rates
begin at \$10 single and \$15 double (twin beds).

NOTE: IN BOTH THESE TOURNAMENTS ADJOURNED GAMES WILL BE
CONSIDERED WON BY BOTH PLAYERS FOR PAIRING PURPOSES.

THE CALIFORNIA CHESS REPORTER

Vol. XIX, No. 1

\$2 per year

July-August, 1969

THE CALIFORNIA CHESS REPORTER, 244 Kearny Street, San Francisco 94108

Published Bi-monthly

Official Organ of the California State Chess Federation

Editor: Guthrie McClain

Associate Editors: Gordon S. Barrett, Los Angeles; Dr. Mark W. Eudey, Berkeley;

Neil T. Austin, Sacramento; Irving Rivise, Los Angeles

Games Editor: Jude F. Acers

Guest Annotator: I. M. William G. Addison

Reporter Tasks: Robert E. Burger

Second-class postage paid at San Francisco, California

CONTENTS

California Junior Championship..	2- 3	Expert Candidates.....	12
Long Beach Classic.....	3- 5	Davis Championship.....	13
A. B. Stamer Memorial.....	5- 7	Game of the Month.....	13-15
Central California Qualifying.....	8	CSCF Questionnaire.....	15-17
Pacific Southwest.....	9-11	Games.....	17-23
Mechanics Institute.....	11-12	Tasks.....	24

THE REPORTER'S NINETEENTH YEAR

Fifteen years ago there appeared in this space, "With this issue The Reporter embarks upon its fourth year. We feel like patting ourselves on the back for having lasted this long. . ." As our nineteenth year begins we feel that we have lasted a long time, indeed. Sometimes we have wanted to quit, but there wasn't anyone willing to take the responsibility. In 18 years no one of the many good men who have worked on The Reporter has wanted this unpaid job.

Let us explore the possibility of paying to have the work done. An editor would probably cost the CSCF around \$800 per year and articles and annotations might run another \$300 or so. To raise the money we might raise dues from \$2.50 to \$5. On our present membership of about 300, that's \$750. So we would need another 70 members. So far, it looks good; in past years we have often had more than 400 members. We might even do better and raise enough extra funds to afford decent prizes in the State Championship!

ANTMAN TIES JONES, WINS CALIFORNIA JUNIOR CHAMPIONSHIP ON TIE-BREAKS

Bruce Antman of Montebello is the new California Junior Champion, having outpointed Albyn Jones of Porterville and Los Angeles on tie-breaking points, 21 to 20½. Both players scored 5½-½. The tournament was sponsored by the Piatigorsky Foundation and the Los Angeles schools, and was directed by international grandmaster Isaac Kashdan.

CALIFORNIA JUNIOR CHAMPIONSHIP, JUNE 28-29, 1969

	1	2	3	4	5	6	Score
1. B. Antman	D29	w16	W23	W11	W10	W9	5½-½
2. A. Jones	W33	W21	D6	W26	W7	W4	5½-½
3. S. Schwartz	W23	W27	L9	W13	W24	W7	5 -1
4. K. Commons	W19	D26	W29	W6	W5	L2	4½-1½
5. A. Levi	W17	W12	D11	W20	L4	W16	4½-1½
6. R. Myers	W31	W14	D2	L4	D21	W20	4 -2
7. R. Neustaedter	W24	W13	W10	W9	L2	L3	4 -2
8. R. Stoutenborough	W32	W15	L26	D19	W29	D11	4 -2
9. T. Devine	W41	W20	W3	L7	W27	L1	4 -2
10. B. Alexander	W38	W22	L7	W15	L1	W24	4 -2
11. R. Newbold	W34	W25	D5	L1	W19	D8	4 -2
12. D. Levy	W36	L5	W32	L24	W35	W22	4 -2
13. D. Berry	W39	L7	W17	L3	W31	W21	4 -2
14. S. Telingator	W35	L6	L24	W38	D18	W29	3½-2½
15. E. Bohanan	W43	L8	W33	L10	D17	W31	3½-2½
16. R. Fisher	D42	L1	W22	W34	W26	L5	3½-2½
17. M. Ventriglia	L5	W36	L13	W30	D15	W27	3½-2½
18. S. Valentine	L26	L23	W43	W32	D14	W28	3½-2½
19. B. Petersen	L4	W37	W25	D8	L11	W26	3½-2½
20. L. Schlueter	W30	L9	W41	L5	W34	L6	3 -3
21. J. McCaffrey	W40	L2	W30	D27	D6	L13	3 -3
22. B. Murdock	W44	L10	L16	W33	W25	L12	3 -3
23. E. Simon	L3	W18	L1	L35	W37	W32	3 -3
24. B. Burton	L7	W40	W14	W12	L3	L10	3 -3
25. R. Snyder	W28	L11	L19	W41	L22	W35	3 -3
26. R. Melniker	W18	D4	W8	L2	L16	L19	2½-3½
27. L. Christensen	W37	L3	W31	D21	L9	L17	2½-3½
28. J. Wilson	L25	D34	W42	L29	W38	L18	2½-3½
29. C. Davidson	D1	W42	L4	W28	L8	L14	2½-3½
30. C. Strong	L20	W38	L21	L17	D33	W39	2½-3½
31. D. Kristofferson	L6	W35	L27	W36	L13	L15	2 -4
32. D. Martin	L8	W43	L12	L18	W36	L23	2 -4
33. D. Toy	L2	W39	L15	L22	D30	D34	2 -4
34. R. Jones	L11	D28	W37	L16	L20	D33	2 -4
35. S. Shapero	L14	L31	W39	W23	L12	L25	2 -4

	1	2	3	4	5	6	Score
36. K. Roach	L12	L17	W40	L31	L32	Bye	2 -4
37. A. Meshnik	L27	L19	L34	W39	L23	D38	1½-4½
38. R. Kenny	L10	L30	Bye	L14	L28	D37	1½-4½
39. P. Mangone	L13	L33	L35	L37	W42	L30	1 -5
40. P. Garrick	L21	L24	L36	W42	---	---	1 -5
41. C. Shipe	L9	W44	L20	L25	---	---	1 -5
42. J. Beebe	D16	L29	L28	L40	L39	---	½-5½
43. K. Richey	L15	L32	L18	---	---	---	0 -6
44. R. Guerrero	L22	L41	---	---	---	---	0 -6

PRUNER WINS LONG BEACH CLASSIC

Earl Pruner won the Classic title at Long Beach in June by winning four straight games and drawing his last game with Jude Acers (who tied for second place with Tibor Weinberger). A Class A & B section was won by Ross Stoutenborough, 5½-½. Allan Pollard was second, 5-1, ahead of three players with 4½-1½ scores. A third section was won by David Rubinsky and David Quarve, who tied with 5-1 scores. Rubinsky won the title on tie-breaking points. There were 94 contestants. William Bragg directed.

SECOND ANNUAL LONG BEACH CLASSIC, JUNE 27-29, 1969SECTION 1

	1	2	3	4	5	Score
1. E. Pruner	W12	W8	W5	W4	D3	4½-½
2. T. Weinberger	W7	L5	D13	W11	W6	3½-1½
3. J. Acers	W13	W11	L4	W10	D1	3½-1½
4. W. Kennedy	W16	W6	W3	L1	L5	3 -2
5. J. Loftsson	W9	W2	L1	L6	W4	3 -2
6. C. Henin	W10	L4	W9	W5	L2	3 -2
7. T. Lux	L2	L9	W12	W14	W13	3 -2
8. E. Kennedy	W14	L1	L10	W15	W11	3 -2
9. L. Corbin	L5	W7	L6	W13	D10	2½-2½
10. K. Commons	L6	W16	W8	L3	D9	2½-2½
11. A. Spiller	W15	L3	W14	L2	L8	2 -3
12. G. Hunnex	L1	L14	L7	Bye	W15	2 -3
13. R. Reynolds	L3	W15	D2	L9	L7	1½-3½
14. H. James	L4	W12	L11	L7	L17	1 -4
15. B. Hall	L11	L13	Bye	L8	L12	1 -4
16. I. Lyon	---	---	---	---	W14	1 -4
17. M. Siero	L4	L10	---	---	---	0 -5

SECTION 2

	1	2	3	4	5	6	Score
1. R. Stoutenborough	W29	W12	W6	D2	W4	W8	5½-½

Long Beach Classic: Section 2 (cont.)

	1	2	3	4	5	6	Score
2. A. Pollard	W11	W15	W27	D1	W3	D5	5 -1
3. A. Sacks	W22	W17	W14	D4	L2	W10	4½-1½
4. R. Myers	W18	W20	W8	D3	L1	W9	4½-1½
5. L. Nezhni	W34	L8	W10	W27	W14	D2	4½-1½
6. K. Valdma	W21	D9	L1	D11	W19	W17	4 -2
7. R. Hough	L31	D22	D17	W25	W26	W13	4 -2
8. W. Howeth	W25	W5	L4	W26	D11	L1	3½-2½
9. L. Christiansen	W16	D6	W24	L14	W12	L4	3½-2½
10. J. Wilson	W33	D24	L5	W16	W15	L3	3½-2½
11. S. Levine	L2	W30	W33	D6	D8	D12	3½-2½
12. R. DeLaura	W19	L1	W18	D15	L9	D11	3 -3
13. A. Cohen	D17	L14	W21	D24	W18	L7	3 -3
14. M. Thomason	W28	W13	L3	W9	L5	---	3 -3
15. D. Cotten	W26	L2	W31	D12	L10	D16	3 -3
16. R. Klein	L9	D21	W22	L10	W20	D15	3 -3
17. T. Lydersen	D13	L3	D7	W33	W27	L6	3 -3
18. D. Parker	L4	W29	L12	W23	L13	W25	3 -3
19. H. Rogosin	L12	W25	L26	W31	L6	W23	3 -3
20. D. Zes	W30	L4	W34	---	L16	W21	3 -3
21. D. Berry	L6	D12	L13	W22	W32	L20	2½-3½
22. D. Linn	L3	D7	L16	L21	W30	D28	2 -4
23. L. Piliavin	L24	L33	W29	L18	W31	L19	2 -4
24. S. Sawyer	W23	D10	L9	D13	---	---	2 -4
25. R. Uchizono	L8	L19	W28	L7	W34	L18	2 -4
26. P. Perillo	L15	W28	W19	L8	L7	---	2 -4
27. F. Borges	W32	W31	L2	L5	L17	---	2 -4
28. D. Fram	L14	L26	L25	D30	D29	D22	1½-4½
29. D. Bragg	L1	L18	L23	---	D28	W32	1½-4½
30. J. Surlow	L20	L11	L32	D28	L22	Bye	1½-4½
31. V. Miliasukas	W7	L27	L15	L19	L23	---	1 -5
32. J. Batchelder	L27	L34	W30	---	L21	L29	1 -5
33. G. Miller	L10	W23	L11	L17	---	---	1 -5
34. L. Pritchard	L5	W32	L20	---	L25	---	1 -5

SECTION 3

	1	2	3	4	5	6	Score
1. D. Rubinsky	W31	W30	D5	W13	D6	W3	5 -1
2. D. Quarve	W19	W20	W18	D3	W12	D4	5 -1
3. J. Brady	W28	W9	W17	D2	W4	L1	4½-1½
4. R. Rogers	W37	W14	W7	W8	L3	D2	4½-1½
5. G. Schweger	W15	W16	D1	L12	W29	W9	4½-1½
6. D. Crawford	L30	W24	W21	W18	D1	W12	4½-1½
7. J. Nishani	W42	W40	L4	W19	D8	W13	4½-1½
8. S. Katona	W34	D10	W29	L4	D7	W25	4 -2

	1	2	3	4	5	6	Score
9. A Basner	W27	L3	W41	W26	W14	L5	4 -2
10. R. Korte	W39	D8	L12	W22	W28	D14	4 -2
11. W. Myers	L16	L15	W24	W38	W33	W26	4 -2
12. D. Hill	W43	D32	W10	W5	L2	L6	3½-2½
13. J. Gish	D29	W23	W32	L1	W15	L7	3½-2½
14. P. Brestyansky	W36	L4	W39	W17	L9	D10	3½-2½
15. J. Garrett	L5	W11	W25	D28	L13	W31	3½-2½
16. G. Hargrove	W11	L5	D20	D33	D31	W30	3½-2½
17. T. Myer	W24	W21	L3	L14	D19	W29	3½-2½
18. E. Simon	W33	W41	L2	L6	D32	W28	3½-2½
19. V. Custer	L2	W31	W36	L7	D17	D23	3 -3
20. D. Denbow	Bye	L2	D16	L29	D22	W35	3 -3
21. K. Thomsen	W25	L17	L6	L34	W39	W32	3 -3
22. D. Martin	L41	D33	W35	L10	D20	W34	3 -3
23. J. Fox	L35	L13	W38	W32	D30	D19	3 -3
24. H. Rosa	L17	L6	L11	Bye	W41	W36	3 -3
25. P. Rogosin	L21	Bye	L15	W39	W34	L8	3 -3
26. D. Franks	L32	W43	W40	L9	W35	L11	3 -3
27. J. VanLeeuwen	L9	L28	L34	W37	W40	W33	3 -3
28. R. Denuse	L3	W27	W30	D15	L10	L18	2½-3½
29. C. Davidson	D13	W35	L8	W20	L5	L17	2½-3½
30. J. Pyle	W6	L1	L28	W40	D23	L16	2½-3½
31. L. Sovring	L1	L19	W37	W36	D16	L15	2½-3½
32. R. Gerlich	W26	D12	L13	L23	D18	L21	2 -4
33. O. Root	L18	D22	W42	D16	L11	L27	2 -4
34. V. Ahmed	L8	L39	W27	W21	L25	L22	2 -4
35. C. Fotias	W23	L29	L22	W41	L26	L20	2 -4
36. T. Yee	L14	W37	L19	L31	W38	L24	2 -4
37. J. Drehs	L4	L36	L31	L27	Bye	W40	2 -4
38. M. Noriega	L40	D42	L23	L11	L36	W39	1½-4½
39. W. Metsker	L10	W34	L14	L25	L21	L38	1 -5
40. D. Abrigo	W38	L7	L26	L30	L27	L37	1 -5
41. R. Seville	W22	L18	L9	L35	L24	---	1 -5
42. D. Narikawa	L7	D38	L33	---	---	---	½-5½
43. J. Skratulia	L12	L26	---	---	---	---	0 -6

PRUNER WINS A. B. STAMER MEMORIAL

Earl Pruner of Los Angeles added another title to his collection over the 4th of July weekend when he scored 6½-½ at the Mechanics' Institute. John Grefe of Berkeley and Jim Schmitt of San Francisco tied for second, 6-1. There were 83 contestants and the prize fund was an even thousand dollars. The tournament director was Michael Goodall. The cross-table follows.

6th ANNUAL ARTHUR B. STAMER MEMORIAL, JULY 4-6, 1969

	1	2	3	4	5	6	7	Score
1. E. Pruner	W38	D15	W49	W22	W46	W4	W2	6 $\frac{1}{2}$ - $\frac{1}{2}$
2. J. Grefe	W61	W23	W39	W16	W5	W8	L1	6 -1
3. J. Schmitt	W73	W62	W67	L5	W21	W23	W9	6 -1
4. W. Bills	W22	W26	W37	D8	W10	L1	W14	5 $\frac{1}{2}$ -1 $\frac{1}{2}$
5. B. Menas	W70	W61	W9	W3	L2	W18	D7	5 $\frac{1}{2}$ -1 $\frac{1}{2}$
6. M. Burkett	W43	D49	W28	W15	L8	W19	W31	5 $\frac{1}{2}$ -1 $\frac{1}{2}$
7. M. Morris	W59	L37	W52	W38	W51	W27	D5	5 $\frac{1}{2}$ -1 $\frac{1}{2}$
8. W. Addison	W52	W31	W14	D4	W6	L2	D17	5 -2
9. A. Baisley	W24	W33	L5	W39	W16	W30	L3	5 -2
10. P. Grey	W25	W71	W58	D17	L4	D32	W45	5 -2
11. C. Capps	L71	D25	W68	D34	W36	W28	W33	5 -2
12. R. Henry	W75	L22	L38	W81	W24	W54	W23	5 -2
13. B. Lainson	W53	L58	W71	D42	D50	W29	W32	5 -2
14. D. Dean	W44	W45	L8	D19	W37	W41	L4	4 $\frac{1}{2}$ -2 $\frac{1}{2}$
15. A. Raymond	W64	D1	W34	L6	D42	W50	D18	4 $\frac{1}{2}$ -2 $\frac{1}{2}$
16. A. Lavergne	W66	W51	W17	L2	L9	D21	W43	4 $\frac{1}{2}$ -2 $\frac{1}{2}$
17. C. Harmon	W57	D39	L16	D10	W52	W34	D8	4 $\frac{1}{2}$ -2 $\frac{1}{2}$
18. N. Wood	W74	W55	D22	W26	D27	L5	D15	4 $\frac{1}{2}$ -2 $\frac{1}{2}$
19. T. Kurosaki	L51	W66	W53	D14	W56	L6	W42	4 $\frac{1}{2}$ -2 $\frac{1}{2}$
20. J. Iwashita	W76	L21	D24	L43	W68	W37	W41	4 $\frac{1}{2}$ -2 $\frac{1}{2}$
21. H. Bradley	W30	W20	L46	W31	L3	D16	D26	4 -3
22. R. Freeman	L4	W12	D18	L1	D47	W62	W49	4 -3
23. S. Kornher	W82	L2	W40	W58	W29	L3	L12	4 -3
24. A. Eydal	L9	W56	D20	D49	L12	W53	W55	4 -3
25. G. Wong	L10	D11	W72	D28	D26	W63	D35	4 -3
26. J. Montgomery	W80	L4	W64	L18	D25	W44	D21	4 -3
27. F. Thornally	W36	W35	W32	D46	D18	L7	---	4 -2
28. A. Di Milo	D50	W72	L6	D25	W53	L11	W51	4 -3
29. D. Blohm	L37	W75	W63	W54	L23	L13	W30	4 -3
30. D. Amkraut	L21	W76	W60	W59	W44	L9	L29	4 -3
31. M. Schemm	W83	L8	W74	L21	W38	W40	L6	4 -3
32. M. Wilkerson	W41	W60	L27	D37	W43	D10	L13	4 -3
33. S. Sawyer	W56	L9	L44	W71	W59	W51	L11	4 -3
34. B. Heneghan	D72	W68	L15	D11	W77	L17	W50	4 -3
35. R. Menaster	W40	L27	W81	L51	W60	D42	D25	4 -3
36. G. Weber	L27	L40	W83	W64	L11	W75	W54	4 -3
37. D. Obstfeldt	W29	W7	L4	D32	L14	L20	W65	3 $\frac{1}{2}$ -3 $\frac{1}{2}$
38. J. Veguilla	L1	W83	W12	L7	L31	D59	W68	3 $\frac{1}{2}$ -3 $\frac{1}{2}$
39. G. Lee	W78	D17	L2	L9	W79	L43	W59	3 $\frac{1}{2}$ -3 $\frac{1}{2}$
40. G. Veverka	L35	W36	L23	D60	W49	L31	W52	3 $\frac{1}{2}$ -3 $\frac{1}{2}$
41. G. Rey	L32	W47	D54	W62	W67	L14	L20	3 $\frac{1}{2}$ -3 $\frac{1}{2}$
42. M. Peach	L63	Bye	W55	D13	D15	D35	L19	3 $\frac{1}{2}$ -3 $\frac{1}{2}$
43. E. H. Mueller	L6	D69	W79	W20	L32	W39	L16	3 $\frac{1}{2}$ -3 $\frac{1}{2}$

	1	2	3	4	5	6	7	Score
44. A. Saguisag	L14	W82	W33	D67	L30	L26	W78	3½-3½
45. R. Gribble	W79	L14	D77	L50	W72	W65	L10	3½-3½
46. R. Hoppe	W81	W63	W21	D27	L1	---	---	3½-1½
47. S. Gee	L55	L41	L66	W83	D22	W76	W60	3½-3½
48. E. Prodinge	L67	L52	L65	D80	W83	W79	W63	3½-3½
49. C. Wilson	W65	D6	L1	D24	L40	W61	L22	3 -4
50. K. Lawless	D28	L54	W70	W45	D13	L15	L34	3 -4
51. L. Gardella	W19	L16	Bye	W35	L7	L33	L28	3 -4
52. M. Gazse	L8	W48	L7	W66	L17	W74	L40	3 -4
53. R. Fitzsimmons	L13	W57	L19	W61	L28	L24	W73	3 -4
54. R. Cuneo	D68	W50	D41	L29	W75	L12	L36	3 -4
55. J. Hope	W47	L18	L42	L75	W76	W57	L24	3 -4
56. E. Ipsen	L33	L24	W73	W57	L19	L60	W74	3 -4
57. R. Swanson	L17	L53	W69	L56	W64	L55	W72	3 -4
58. Z. Baroudi	L60	W13	L10	L23	W81	W73	---	3 -3
59. D. Betanco	L7	W65	W62	L30	L33	D38	L39	2½-4½
60. E. Lien	W58	L32	L30	D40	L35	W56	L47	2½-4½
61. C. Huneke	L2	L5	W78	L53	W82	L49	D64	2½-4½
62. S. Tresz	W69	L3	L59	L41	W71	L22	D66	2½-4½
63. B. Gross	W42	L46	L29	W76	D65	L25	L48	2½-4½
64. W. McKaig	L15	W73	L26	L36	L57	W71	D61	2½-4½
65. J. Corig	L49	L59	W48	W74	D63	L45	L37	2½-4½
66. M. McNow	L16	L19	W47	L52	L73	W82	D62	2½-4½
67. R. Anderson	W48	W77	L3	D44	L41	---	---	2½-2½
68. R. Feliciano	D54	L34	<u>L11</u>	<u>W70</u>	L20	W77	L38	2½-4½
69. J. C. Evans	L62	D43	L57	L72	L74	W80	W79	2½-4½
70. D. Lieberman	L5	D79	L50	L68	W80	D72	D77	2½-4½
71. F. Berry	W11	L10	L13	L33	L62	L64	W82	2 -5
72. S. L. Shapiro	D34	L28	L25	W69	L45	D70	L57	2 -5
73. A. Gach	L3	L64	L56	W78	W66	L58	L53	2 -5
74. P. Vayssie	L18	W78	L31	L65	W69	L52	L56	2 -5
75. R. Astle	L12	L29	W80	W55	L54	L36	---	2 -4
76. L. O'Doan	L20	L30	W82	L63	L55	L47	W81	2 -5
77. E. Yeung	Bye	L67	D45	L79	L34	L68	D70	2 -5
78. A. Gullmes	L39	L74	L61	L73	Bye	W81	L44	2 -5
79. R. Morris	L45	D70	L43	W77	L39	L48	L69	1½-5½
80. Gary Wong	L26	L81	L75	D48	L70	L69	Bye	1½-5½
81. M. E. Mattingly	L46	W80	L35	L12	L58	L78	L76	1 -6
82. J. Lieberman	L23	L44	L76	Bye	L61	L66	L71	1 -6
83. L. Mancini	L31	L38	L36	L47	L48	---	---	0 -5

AMKRAUT CCCA FINALIST IN CALIFORNIA STATE CHAMPIONSHIP

David Amkraut of Palo Alto won first place in the Central California Chess Association championship and qualifying tournament held at Concord July 19-20, 1969, and will represent the association in the State Finals to be held late this year in Los Angeles. Amkraut drew in the first round (with Guillermo Rey of San Francisco) and then won four straight games for a $4\frac{1}{2}$ - $\frac{1}{2}$ score. Tied for second were Zaid Baroudi of San Francisco and Phil D. Smith of Fresno, who had two draws each and won first and second CCCA prizes. Stephen Kornher of Rohnert Park won the "A" prize.

There were ten winners of prizes in the Reserve Division of 45 contestants, headed by Rod Bobo of Fresno, first "B" with 5-0, and Walter Stuart of Fresno, first "C" with 4-1. The Junior Division crowned Dennis Myers of San Jose, ages 15-16, and Kevin Fong of San Francisco together with Matthew Krueger of San Jose, first and second in the under-14 category. There were 71 contestants in all. Tournament directors were Jerome Long and Martin Morrison.

CENTRAL CALIFORNIA CHESS ASSOCIATION QUALIFYING TOURNAMENT

	1	2	3	4	5	Score
1. D. Amkraut	D8	W11	W7	W12	W6	$4\frac{1}{2}$ - $\frac{1}{2}$
2. Z. Baroudi	W18	W10	D6	W4	D7	4 -1
3. P. D. Smith	W13	W17	D4	D6	W9	4 -1
4. G. Pickler	W5	W3	D6	L2	W10	$3\frac{1}{2}$ - $1\frac{1}{2}$
5. S. Kornher	L4	W9	D11	W16	W12	$3\frac{1}{2}$ - $1\frac{1}{2}$
6. M. Appleberry	W14	W15	D2	D3	L1	3 -2
7. M. Morris	D11	W8	L1	W10	D2	3 -2
8. G. Rey	D1	L7	L9	W18	W14	$2\frac{1}{2}$ - $2\frac{1}{2}$
9. J. Montgomery	D15	L5	W8	W11	L2	$2\frac{1}{2}$ - $2\frac{1}{2}$
10. G. Wilson	W12	L2	W17	L7	L4	2 -3
11. R. Cuneo	D7	L1	D5	L9	W16	2 -3
12. R. Mitchell	L10	W14	W13	L1	L5	2 -3
13. M. Gazse	L3	W16	L12	L14	W18	2 -3
14. C. Maddigan	L6	L12	D18	W13	L8	$1\frac{1}{2}$ - $3\frac{1}{2}$
15. K. Lawless	D9	L6	L16	Bye	LF	$1\frac{1}{2}$ - $3\frac{1}{2}$
16. R. Flink	L17	L13	W15	L5	L11	1 -4
17. A. Benson	W16	L3	L10	LF	LF	1 -4
18. M. Peach	L2	L4	D14	L8	L13	$\frac{1}{2}$ - $4\frac{1}{2}$

FOUR TIE FOR FIRST IN PACIFIC SOUTHWEST CLIFFHANGER - KENNEDY CHAMPION

Ed Kennedy of Santa Monica tied with Tibor Weinberger, Keykhosro Kahyai and Ivars Dahlberg and was declared the winner of the Pacific Southwest Championship on tie-breaking points. But the award was not made until Norman Lessing and Stewart Schwartz completed a third-round adjourned game (which resulted in a draw but which could have added another player to the four who were already tied for first place). It was the tightest finish in the history of the annual Pacific Southwest tournament.

There were 109 contestants and the tournament director was William Bragg. The cross-table:

PACIFIC SOUTHWEST OPEN, SANTA MONICA, JULY 1969

	1	2	3	4	5	6	7	Score
1. E. Kennedy	W90	W39	W11	W21	D5	W17	D46	6 -1
2. T. Weinberger	W52	L20	W70	W14	W15	W21	W5	6 -1
3. K. Kahyai	W61	W14	W83	L5	W55	W10	W11	6 -1
4. I. Dalberg	W75	W107	W51	W13	D17	W19	D1	6 -1
5. K. Commons	W81	W96	W10	W3	D1	W18	L2	5½-1½
6. N. Lessing	W104	W16	D9	L8	W31	W20	W36	5½-1½
7. C. Henin	W37	D24	W41	L12	W28	W40	W19	5½-1½
8. O. Stumbrs	W53	D82	W33	W6	L19	W22	W18	5½-1½
9. S. Schwartz	W67	W66	D6	L18	W44	W29	W17	5½-1½
10. C. Pilnick	W89	W36	L5	W39	W23	L3	W25	5 -2
11. F. Alonso	W68	W44	L1	W38	W34	W32	L3	5 -2
12. L. Nezhni	W97	D29	W24	W7	L18	W49	D13	5 -2
13. R. Reynolds	W77	W46	W47	L4	D36	W50	D12	5 -2
14. D. Cotten	W79	L3	W81	L2	W85	W35	W30	5 -2
15. A. Pollard	W71	W50	L17	W64	L2	W56	W33	5 -2
16. B. Hall	W92	L6	W85	L49	W45	W62	W42	5 -2
17. A. Kanamori	W62	W31	W15	W22	D4	L1	L9	4½-2½
18. R. Martin	W86	W26	D23	W9	W12	L5	L8	4½-2½
19. D. Bicknell	W63	W38	D20	W29	W8	L4	L7	4½-2½
20. J. Kent	W78	W2	D19	D23	D22	L6	W34	4½-2½
21. P. Quillen	W84	W48	W25	L1	W43	L2	D26	4½-2½
22. J. Loftsson	W70	W27	W30	L17	D20	L8	W49	4½-2½
23. E. Wicher	W101	W55	D18	D20	L10	D41	W50	4½-2½
24. E. Faelten	W35	D7	L12	W100	L32	W81	W60	4½-2½
25. R. Hough	W65	W99	L21	W67	D30	W51	L10	4½-2½
26. K. Morrissey	W109	L18	L29	W106	W63	W54	D21	4½-2½
27. A. Wicher	W85	L22	W84	L35	W64	D37	W57	4½-2½
28. S. Vihon	D66	L67	W99	W98	L7	W96	W52	4½-2½
29. J. Adamson	W73	D12	W26	L19	W39	L9	D41	4 -3

Pacific Southwest Open (cont.)

	1	2	3	4	5	6	7	Score
30. Wollschlager	W91	W100	L22	W33	D25	D36	L14	4 -3
31. W. Thomson	W57	L17	W69	D42	L6	W58	D37	4 -3
32. E. Bohanan	W106	L83	W54	D40	W24	L11	D43	4 -3
33. M. Cotter	W49	W108	L8	L30	W65	W47	L15	4 -3
34. D. Berry	W74	L51	W65	W47	L11	W55	L20	4 -3
35. M. Ventriglia	L24	W73	W96	W27	L40	L14	W64	4 -3
36. A. Sacks	W98	L10	W104	W93	D13	D39	L6	4 -3
37. J. Woodward	L7	W78	W76	L51	W74	D27	D31	4 -3
38. V. Jovanovic	W59	L19	W53	L11	W72	L42	W71	4 -3
39. P. Klimek	W72	L1	W58	L10	L29	W87	W69	4 -3
40. R. DeLaura	D82	W103	D43	D32	W35	L7	D44	4 -3
41. S. Salter	D50	W94	L7	W82	D42	D23	D29	4 -3
42. G. Hunnex	L103	W45	W86	D31	D41	W38	L16	4 -3
43. J. Varis	D99	<u>W106</u>	D40	W62	L21	D52	D32	4 -3
44. D. Fram	W105	L11	W66	D83	L9	W88	D40	4 -3
45. W. Potts	D56	L42	D88	W53	L16	W78	W73	4 -3
46. R. Ervin	W54	L13	L67	D57	W82	D71	W62	4 -3
47. P. Perillo	W94	W64	L13	L34	W86	<u>L33</u>	W76	4 -3
48. D. Sefton	W87	L21	L62	W68	L54	W72	W67	4 -3
49. R. Lalazarian	L33	W68	W52	W16	D51	L12	L22	3½-3½
50. R. Joseph	D41	L15	W61	W60	W83	L13	L23	3½-3½
51. B. Antman	W93	W34	L4	W37	D49	L25	---	3½-3½
52. P. Razien	L2	W71	L49	W69	W67	D43	L28	3½-3½
53. B. Murdock	L8	W75	L38	L45	W92	W63	D56	3½-3½
54. J. Gish	L46	W91	L32	<u>W108</u>	W48	L26	D59	3½-3½
55. F. Galvin	W88	L23	W103	<u>W63</u>	L3	L34	D58	3½-3½
56. S. Levine	D45	L65	D98	W76	W93	L15	D53	3½-3½
57. T. De Shionno	L31	L63	W91	D46	W100	W97	L27	3½-3½
58. C. Davidson	L83	W87	L39	W89	W96	L31	D55	3½-3½
59. L. Mann	L38	L81	L68	W95	W101	W84	D54	3½-3½
60. J. Zelmer	L100	D61	W90	L50	W98	<u>W83</u>	L24	3½-3½
61. J. Pyle	L3	D60	L50	L66	W94	<u>W98</u>	W81	3½-3½
62. M. Mills	L17	W89	W48	L43	W70	L16	L46	3 -4
63. C. Fotias	L19	W57	W107	L55	L26	L53	W88	3 -4
64. D. Bragg	W95	L47	<u>W108</u>	L15	L27	W74	L35	3 -4
65. D. Rubinsky	L25	W56	L34	D81	L33	<u>W104</u>	D77	3 -4
66. P. Pedersen	D28	L9	L44	W61	L81	D77	W85	3 -4
67. H. James	L9	W28	W46	<u>L25</u>	L52	W86	L48	3 -4
68. J. Andrews	L11	L49	W59	<u>L48</u>	L73	W102	W89	3 -4
69. V. Ahmed	L108	W102	L31	L52	W90	W70	L39	3 -4
70. L. Mulinex	L22	W92	L2	W80	L62	L69	W97	3 -4
71. E. Simon	L15	L52	W102	D90	W106	D46	L38	3 -4
72. J. Garrett	L39	L84	W75	W107	L38	L48	W92	3 -4
73. N. Valenti	L29	L35	W92	L84	W68	W85	L45	3 -4

	1	2	3	4	5	6	7	Score
74. H. Rosas	L34	L93	W95	W104	L37	L64	W90	3 -4
75. J. Batchelder	L4	L53	L72	L99	<u>W109</u>	W82	W87	3 -4
76. C. Sutton	L96	W101	L37	L56	<u>W102</u>	W89	L47	3 -4
77. B. Collins	L13	L98	L87	W79	W88	D66	D65	3 -4
78. B. Burton	L20	L37	W105	<u>L85</u>	W103	L45	W84	3 -4
79. S. Cunningham	L14	L104	L101	<u>L77</u>	W95	<u>W106</u>	W91	3 -4
80. W. Meyers	---	W105	L93	L70	L89	<u>W103</u>	W86	3 -4
81. P. Wise	L5	W59	L14	D65	W66	L24	L61	2½-4½
82. L. Gilbert	D40	D8	D100	L41	L46	L75	W98	2½-4½
83. G. Gean	W58	W32	L3	D44	L50	L60	---	2½-4½
84. A. Caldwell	L21	W72	L27	<u>W73</u>	<u>L99</u>	L59	L78	2 -5
85. D. Rader	L27	W109	L16	<u>W78</u>	L14	L73	L66	2 -5
86. H. Sanders	L18	W95	L42	<u>W87</u>	L47	L67	L80	2 -5
87. M. Noriega	L48	L58	W77	L86	<u>W107</u>	L39	L75	2 -5
88. T. Myer	L55	D90	D45	W103	L77	L44	L63	2 -5
89. D. Linn	L10	L62	W109	L58	W80	L76	L68	2 -5
90. R. Andrews	L1	D88	L60	D71	L69	W101	L74	2 -5
91. T. Twaiten	L30	L54	L57	L97	W105	W94	L79	2 -5
92. J. Buonocore	L16	L70	L73	<u>W109</u>	L53	<u>W99</u>	L72	2 -5
93. P. Bronson	L51	W74	W80	L36	L56	---	---	2 -5
94. A. Patsch	L47	L41	L106	W105	L61	L91	W102	2 -5
95. D. Abrigo	L64	L86	L74	L59	L79	W105	W101	2 -5
96. R. Andreini	W76	L5	L35	W101	L58	<u>L28</u>	---	2 -5
97. T. Masters	L12	---	---	W91	W104	<u>L57</u>	L70	2 -5
98. R. Stewart	L36	W77	D56	L28	L60	L61	L82	1½-5½
99. P. Brestyansky	D43	L25	L28	W75	<u>L84</u>	<u>L92</u>	---	1½-5½
100. K. Leonhardt	W60	L30	D82	L24	<u>L57</u>	---	---	1½-5½
101. O. Higgins	L23	L76	W79	L96	L59	L90	L95	1 -6
102. V. Schiff	L107	L69	L71	Bye	L76	L68	L94	1 -6
103. D. Kristofferson	W42	L40	L55	L88	L78	<u>L80</u>	---	1 -6
104. S. Racz	L6	W79	L36	L74	L97	<u>L65</u>	---	1 -6
105. C. Strong	L44	L80	L78	L94	L91	L95	Bye	1 -6
106. F. Racz	L32	<u>L43</u>	W94	L26	L71	<u>L79</u>	---	1 -6
107. B. Hernandez	W102	L4	L63	L72	<u>L87</u>	---	---	1 -6
108. T. Lux	W69	L33	L64	L54	---	---	---	1 -6
109. D. Carrasco	L26	L85	L89	L92	L75	---	---	0 -7

BOURKE WINS MECHANICS' INSTITUTE JUNE RATING TOURNAMENT

Alan Bourke, the new director of the Mechanics' Institute Chess Room in San Francisco, directed and won first place in the first of a new series of rating tournaments. The tournament was a round robin of four-man sections with a playoff between sections.

MECHANICS' INSTITUTE, JUNE 14-15, 1969

	1	2	3	4	Score
1. Alan Bourke	W4	W6	W7	D2	3½-1½
2. Jude Acers	D5	W8	W3	D1	3 -1
3. Kenneth Fitzgerald (Rochester, N.Y.)	W8	W5	L2	W4	3 -1
4. James Gibbs (Chicago)	L1	W7	W6	L3	2 -2
5. Stephen Gee	D2	L3	W8	D6	2 -2
6. Rick Swanson	W7	L1	L4	D5	1½-2½
7. Al Raymond	L6	L4	L1	W8	1 -3
8. Takashi Kurosaki	L3	L2	L6	L7	0 -4

EXPERT CANDIDATES TOURNAMENT SEASON IN SOUTHERN CALIFORNIA

J. Barnard won the El Segundo Section of the annual Expert Candidates Tournament of Southern California with a perfect score of 5-0. R. Taylor finished second, 4-1. R. Hough and V. Lopez tied for third with 3½-1½ scores. The cross-table:

EXPERT CANDIDATES - EL SEGUNDO SECTION

	1	2	3	4	5	Score
1. J. Barnard	W10	W11	W5	W8	W6	5 -0
2. R. Taylor	W4	L8	W12	W5	W7	4 -1
3. R. Hough	W12	L5	W11	D6	W10	3½-1½
4. V. Lopez	L2	D9	W13	W14	W8	3½-1½
5. D. Sefton	W15	W3	L1	L2	W11	3 -2
6. A. Gojich	W14	W7	D8	D3	L1	3 -2
7. D. Linn	W13	L6	W10	W9	L2	3 -2
8. R. Ervin	W9	W2	D6	L1	L4	2½-2½
9. M. Gojich	L8	D4	W16	L7	W14	2½-2½
10. N. Morrison	L1	W15	L7	W12	L3	2 -3
11. J. Strauss	W16	L1	L3	W13	L5	2 -3
12. A. Caldwell	L3	W16	L2	L10	W15	2 -3
13. Z. Zadrozny	L7	W14	L4	L11	W16	2 -3
14. H. Shipin	L6	L13	W15	L4	L9	1 -4
15. B. Glazer	L5	L10	L14	W16	L12	1 -4
16. H. Nellor	L11	L12	L9	L15	L13	0 -5

PICKLER DAVIS CHAMPION FOR 1969

Gary Pickler is the 1969 Davis Champion, defeating Stephen Sosnick by a full point in the finals. Serge von Oettingen, 1968 champ, directed.

DAVIS CHAMPIONSHIP FINALS, APRIL-JUNE, 1969

CHAMPIONSHIP

	1	2	3	4	Score
1. G. Pickler	X	1-0	1-½	1-1	4½-1½
2. S. Sosnick	0-1	X	½-1	0-1	3½-2½
3. A. Estilai	0-½	½-0	X	1-1	3 -3
4. M. El Sayed	0F	1F	0-0	X	1 -5

SECTION B

	1	2	3	4	Score
1. R. Hansen	X	1-1	1-1	1-0	4½-1½
2. G. Lee	½-0	X	1-1	1-1	4½-1½
3. D. Olmsted	0-0	0-0	X	1-1	2 -4
4. D. Jacobson	0-1	0-0	0-0	X	1 -5

SECTION C

	1	2	3	4	5	6	7	Score
1. F. Garosi	X	0	1	1	1	1	1	5-1
2. S. Rubenstein	1	X	0	1	1	1	1	5-1
3. L. Balics	0	1	X	1	1	1	F	4-2
4. M. Langhans	0	0	0	X	1	1	0	2-4
5. F. Leffingwell	0	0	0	0	X	1	1	2-4
6. J. Fennell	0	0	0	0	F	X	1	1-5
7. E. Restrepo	0	0	F	1	0	0	X	1-5
8. T. Gerlach	0	-	0	-	0	-	-	0-3

GAME OF THE MONTH

by John Blackstone

The following game was played in the last round of the John Gilbreth Memorial when I was leading Jim Lazos, Jerry Hanken and Bill Maillard by half a point. To make sure of first place I had to win the game. (Lazos actually did beat Hanken.)

Before my first move I spent about six minutes wondering what to play. I did not want to play 1. P-K4 because Maillard plays the French and therefore why should I let him play something he knows and feels comfortable in? I decided to play a slow positional game. It does not contain a lot of fireworks and brilliant points, but it was the best game I played at the Gilbreth.

JOHN GILBRETH MEMORIAL, 1969

<u>Game No. 1089 - Reti</u>	
<u>White</u>	<u>Black</u>
<u>J. Blackstone</u>	<u>W. Maillard</u>
1. P-KKt3	Kt-KB3
2. B-Kt2	P-Q4
3. Kt-KB3	P-KKt3
4. P-QKt3	B-Kt2
5. B-Kt2	0-0

6. P-B4 P-B3

At this point I decided to treat the opening as a Reti. My main concern was whether my Q4 square would be weak or strong after I played P-K4. I didn't see any way for him to take immediate advantage of it so I decided to go ahead with the Reti setup.

7. 0-0 QKt-Q2
 Better for Black is 7... B-Kt5 as several recent games have shown. The idea is to play BxKt followed by either P-K3 or K4; Black has been able to eliminate his "bad" Q8.

8. Q-B2
 I spent a few minutes looking at Q-B1 instead of the text. This would support the QB1-KR6 diagonal but would not help in playing P-K4 -- so the text.

8. ... P-QKt3
 This does not conform to the position. Black should strive for P-K4 so he should play R-K1.

9. P-Q3 B-Kt2
 10. P-K4
 With White's last he has carried out his entire opening plan and Black has yet to form one.

10. ... Kt-B4
 A better try is either R-B1 or R-K1. With the text it looks as though Black is obtaining some play, but that is an illusion.

11. R-Q1
 This move is forced but it does several things: 1) Indirectly protects his KP; 2) Overprotects his Q3 & Q4 squares. Black's last has the idea of placing his QKt on K3 where it would cover a few vital squares in the center.

11. ... Q-B1
 Now K3 is ruled out for the Knight so White's reply of B-KR3 is very uncomfortable for Black. 11. ... Q-B2 had to be tried.

12. Kt-B3
 Black was threatening KtxQP; RxKt. PxF.

12. ... P-K3
 13. B-QR3

This has the threat of 14. P-K5; 15. P-Q4 winning the exchange. Mail-mentioned that 14. BxKt was also a threat, leaving him without any play on the Q-side and then proceeding with a King-side attack by White.

This idea occurred to me but only after Black had exchanged in the center, not before. The difference is that White then has his K4 available for his pieces.

13. ... R-Q1
 14. P-K5 Kt-Kt2

I was expecting Kt-Kt5 for which I had worked out a line giving White excellent winning chances: 1) 15. P-Q4, Kt-Q2; 16. B-R3, Kt-R3; 17. PxF, BPxP; 18. QR-B1, Kt-KB4; 19. P-KKt4, Kt-R3; 20. Q-Kt2, R-K1; 21. Kt-QKt5 and wins at least the exchange.

2). 15. P-Q4, Kt-QR3; 16. B-R3, Kt-R3; 17. PxF, BxFxP; 18. QR-B1, Q-Q2; 19. Q-Kt2, QR-B1; 20. R-B2, R-B3; 21. R1-QB1, R1-QB1; 22. P-QKt4 at which point White wins control of the QB file at least.

Admittedly these lines are long and complicated and there may be improvements on both sides, but they give an example of how White should play the position.

15. P-Q4 Kt-R3
 16. Q-K2

White must protect his K5 square, as 16. ... PxF; 17. PxF, P-B4 is threatened. I would prefer to play 16. Q-Q2 but this loses his KP.

16. ... PxF
 17. PxF P-QB4

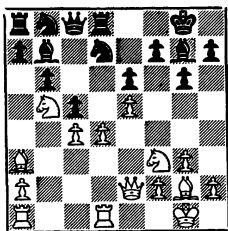
This is Black's best practical chance of obtaining counter-play. He could have chosed Kt-B2 with a passive defense, but White could proceed with a K-side attack while

Black just waits.

18. Kt-QKt5 Kt3-Kt1

Black's best chance consisted of

18. ... B-QB3. White still maintains his edge by 19. Kt-Q6, Q-B2; 20. P-Q5, B-R5 (not 20. ... KtxP; 21. KtxKt, QxKt and White wins two pieces for a Rook by 22. KtxB); 21. PxB, BxR; 22. RxB, PxP; 23. Kt-KKt5; 24. KtxP, Q-K2; 25. BxR, RxB (25. ... , RxKt; 26. RxR, QxR; 27. KtxB followed by B-QKt2 wins); 26. KtxB followed by B-Kt2 wins.



19. Kt-Q6 Q-B2
 20. Kt-QKt5 Q-B1
 21. Kt-Q6 Q-B2

White was only gaining some time on the clock.

22. KtxB QxB
 23. Kt-Kt5 Kt-QB3
 24. Q-B3 Kt2-Kt1
 25. PxP RxxRch

Black's last few moves have been forced. 25. ... R-QB1 was better

but White still maintains his edge by 26. Q-K3.

26. RxR BxP

This ends the game quicker than expected. During the game I was not sure how I would continue after 26. ... P-KR3; 27. Kt-K4, BxP; 28. Kt-B6ch, K-Kt2 (not 28. ... BxKt, as after 29. QxB and 30. B-Kt2 Black has to be mated or lose a piece); 29. Kt-K8ch but could not see a win. Later it occurred to me that I could win a piece by 29. Kt-Q7, KtxKt (what else); 30. QxKt, QxQ; 31. BxQ, winning a piece. If 26. ... , Q-B2; 27. R-Q6 wins two pieces for a Rook and a win in the long run.

27. R-Q8ch K-Kt2

If 27. ... , KtxR; 28. QxQ, KtxQ; 29. BxKt, White regains his Rook and comes out a piece to the good.

28. KtxPch Resigns

Black has his choice of deaths: 28. ... , PxKt; 29. Q-B8 mate, and if 28. ... , K-R3; 29. Q-K3ch followed by an eventual Q-Kt5(xP) mate. It is rather strange to note that Black in this last variation is mated on the same diagonal (QB1-KR6) that I was worried about in the opening.

CSCF QUESTIONNAIRE (CONTINUED)
 CALIFORNIA OPEN AND STATE CHAMPIONSHIP

There were 89 replies to the questionnaire mailed with the November-December issue of The Reporter. The replies for Section A, dealing with the North-South Team Match, were summarized in the March-April issue. A report on Section B (the California Open) and Section C (the State Championship) follows.

The questions concerning the California Open were: Are you satisfied or dissatisfied? If not satisfied, is it because of location, accommodations, program, or for other reasons? We also asked if the person answering was active statewide or local only.

Of the 89 replies, 37 were satisfied, 32 were not satisfied, and 20 did not say. There were 25 who were not satisfied because of the location, 5 because of some deficiency in the prizes, and a few who mentioned faulty publicity, something wrong with the program, or some fault of the tournament director. As we did with our report on Section A, we divided the responses into three areas: S.F. Bay Area, Southern California, and Central California. Each area showed different patterns. S.F. was 5 satisfied to 14 not satisfied, Southern California 19 to 7, and Central California 13 to 11.

The questions concerning the State Championship were: Would you change the qualifying system (and specifically by an Open tournament)? Would you increase prizes (specifically by entry fees, by the USCF, or by other means)?

There were 25 replies which favored changing the qualifying system, of which 19 favored an Open for the championship, 2 an Open restricted to top-rated players, and 4 favored some other change. This left 64 non-committal replies, of which some wanted nothing changed and some simply did not have an opinion. There were 21 who favored higher prizes, with 9 having the CSCF pay the difference and 8 raising the funds by entry fees. A few recommended a combination of ways to raise the prize money, with a tax on regional and local tournaments being mentioned twice. As was the case with the replies concerning the California Open, things like insufficient publicity and tournament directing faults were mentioned in a few instances.

The questionnaire concluded with a request for preference for location of all three events. The results were: Central 28, So. Cal.-No. Cal 14, L.A.-S.F. 17, and 30 not stating preference. As might be expected, Central California voted 14 for the central area to 5 for L.A.-S.F. and 3 for So. Cal.-No. Cal. Southern California voted 10 for L.A.-S.F. to 7 for a central location and 4 for So. Cal.-No. Cal. The S.F. Bay Area voted 7 central, 7 So. Cal.-No. Cal. and 2 for L.A.-S.F.

What conclusions can we draw from these answers? Apart from the fact that only 25% of the membership answered (which may mean that the other 75% did not have anything to say) a part of the answers received did not express opinions on many of the questions. If we assume that this means some kind of approval for present procedures, then the votes for various changes represent a small minority, and the majority would leave matters as they are.

It appears that those in charge should examine the replies for good ideas, rather than look at the replies as directives of some kind. This would be the job of the Board of Directors, the elected officers, and the Tournament Committee.

GAMES

ERNEST SHIELDS OPEN, 1969
Game No. 1090 - Dutch Defense

White	Black
<u>W. Addison</u>	<u>T. Weinberger</u>
1. P-Q4	P-KB4

Black has defeated many strong masters with this opening system.

- | | |
|-----------|------|
| 2. P-QB4 | P-K3 |
| 3. Kt-QB3 | |

Slightly better than this order of moves is 3. P-K3, Kt-KB3; 4. P-KB4, P-QKt3; 5. Kt-KB3, B-QKt2; 6. B-Q3 which is equal, according to MCO-10, after 6... P-B4; if 7. P-Q5, PxP; 8. BxP, PxP busts white. White's line is typical of his patient and extremely dangerous, wear-em-into-the-ground technique.

- | | |
|----------|--------|
| 3. ... | Kt-KB3 |
| 4. P-K3 | P-QKt3 |
| 5. P-B4 | B-Kt2 |
| 6. Kt-B3 | B-Kt5! |
| 7. B-Q2 | 0-0 |

Or the easy 7... BxKt; 8. BxB, Kt-K5, with a comfortable game. (9. B-Kt4, P-B4; 10. B-R3, P-Q3.)

- | | |
|------------|-------|
| 8. B-Q3 | P-Kt3 |
| 9. 0-0 | Q-K2 |
| 10. P-QR3 | BxKt |
| 11. BxB | P-Q3 |
| 12. P-QR4? | |

A lemon. White seeks exchanges, a pointless opening of the rook file. 12. P-QKt4 is best.

- | | |
|---------|---------|
| 12. ... | QKt-Q2? |
|---------|---------|

A mechanical move. 12... P-QR4!

secures b4 for Black with Kt-R3-Kt5 etc. later.

- | | |
|------------|-------|
| 13. P-R5?! | Kt-K5 |
| 14. BxKt | BxB |
| 15. PxP | RPxP |
| 16. RxR | |

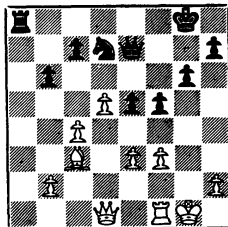
Hardly better is 16. Q-K2. Although Addison disagrees, I consider Black slightly better here.

- | | |
|----------|------|
| 16. ... | RxR |
| 17. P-Q5 | BxKt |

If 17... P-K4; 18. Kt-Kt5, PxP; 20. Q-Q4, Q-K4; 21. PxP, QxQ; 22. BxQ, B-Q6; 23. R-K1! and Black is cooked alive.

- | | |
|----------|------|
| 18. PxB! | P-K4 |
| 19. PxP | PxP |

Conceding his spatial and positional advantage? Not really, for on 19... KtxP? 20. Q-Q4! wins.



- | | |
|-----------|-----|
| 20. P-Q6! | QxP |
| 21. QxQ | PxQ |

22. R-Q1 K-B2

23. RxP K-K1!

Not 23... K-K2; 24. B-Kt4, K-Q1;
25. R-K6 and White zooms into the
vacated King side pawns.

24. BxP! R-R5!

Black is lost after 24. KtxB,
25. R-K6ch, K-Q2; 26. RxKt, R-R5;
27. R-Kt5, RxP; 28. RxP, K-B2;
29. R-Kt3.

25. P-Kt3 R-Kt5

26. B-Q4 RxKtP

The position is drawn. How is
Black going to find the correct
losing method?

27. K-B2 K-K2

Preparing to lose. 27... R-Kt8!
with threats to keep an interna-
tional master honest should draw
easily. Black would neutralize
the QBP with R-QB8 and harass
White's King side pawns if he at-
tempted to advance his King to
R6. So White must try 28. R-B8ch,
K-K2; 29. R-KR8, P-R4! (not A)
29... R-QB8; 30. RxPch, K-K3; 31.
R-Kt7, or (B) 29... Kt-B1; 30.
P-B5!); 30. R-R7ch, K-K3; 31.
R-Kt7, Kt-B1; 32. P-B5 (what else?
33... R-QB8 is threatened, draw-
ing easily), PxP; 33. BxP, Kt-Q2!!
and if 34. RxPch, K-B2; 35. R-B6,
R-QB8; 36. R-B7, K-K3; or 34. B-Q4,

Kt-B1 drawing. Instead White is
handed a vicious, passed meat clea-
ver. It shall go forth.

28. R-QB6 P-QKt4??

27... R-QKt8 is absolutely neces-
sary and should draw as before. The
text just loses.

29. P-B5 P-B5

30. R-B8! PxPch

31. K-K2 Kt-B3

32. R-B7ch K-Q1

A piece goes after 33... K-K3;
34. R-B6ch, K-Q4; 35. R-Q6ch,

33. R-B7 Kt-Q4

34. P-B6

Winning by force. White is deadly
in pawn promotion or win of mater-
ial positions. It is called techn-
ique, good reader!

34. ... K-B1

35. B-K5!

Resigns

After 36... Kt-B6ch; 37. KxP,
Kt-Q4ch; 38. K-Q4 nothing remains
for Black to play for; one slip
and boom!

SIXTH ARTHUR B. STAMER MEMORIAL TOURNAMENT

Game No. 1091 - Ruy Lopez

White Black
J. Grefe W. Addison

1. P-K4

P-K4

2. Kt-KB3

Kt-QB3

3. B-Kt5

P-QR3

4. B-R4

P-Q3

5. P-B3 P-KKt3

6. P-Q4 B-Q2

7. 0-0 B-Kt2

8. PxP PxP

9. B-KKt5 Kt(1)-K2

10. Q-B1 P-R3

11. B-K3 P-Kt3

12. R-Q1	Q-B1	16. O-0	Kt-K2
13. Kt-K1	Q-Kt2	17. P-KKt4	B-QR3
14. Kt-Q2	O-0-0	18. K-Kt2	R-QKt1
15. P-QKt4	P-B4	19. QR-QKt1	Q-B2
16. P-B3	P-B5	20. Kt-Kt3	P-QB4
17. B-KB2	P-KKt4	21. KR-Q1	Kt-B3
18. B-QKt3	P-Kt5	22. KtPxP	KtPxP
19. Kt-B4	PxP	23. Kt-R3	PxP
20. KtxKBP	B-Kt5	24. PxP	R-Kt5
21. P-QR4	Kt-Kt3	25. Kt-B4	KtxKP
22. P-R5	P-Kt4	26. Kt(4)xRP	P-B3
23. Kt-Kt2	Kt(B3)-K2	27. B-B4	KtxBP
24. Q-B2	RxRch	28. BxQ	KtxQ
25. RxR	R-Q1	29. KtxBch	K-B2
26. RxRch	KxR	30. RxKt	P-B6
27. Kt-Q2	B-B3	31. BxP	PxR
28. Kt-Q3	Q-B3	32. BxR	KxKt
29. Kt-B5	B-R5	33. P-R5	R-QKt
30. Q-Q3ch	K-K1	34. B-B3	B-B5
31. P-Kt3	PxP	35. R-Q	BxP
32. PxP	B-Kt4	36. RxP	K-R3
33. B-K3	Q-B3	37. K-B3	K-Kt4
34. BxB	PxB	38. R-K2	R-K1
35. Q-B1	QxQch	39. B-Q2ch	Resigns
36. KxQ	B-B1		
37. B-K6	Resigns		

Game No. 1093 - French

<u>Game No. 1092 - Robatsch</u>		<u>White</u>		<u>Black</u>	
<u>White</u>	<u>Black</u>	<u>J. Grefe</u>	<u>S. Kornher</u>		
<u>E. Pruner</u>	<u>J. Grefe</u>				
1. P-Q4	P-KKt3	1. P-K4	P-K3		
2. P-K4	B-Kt2	2. P-Q4	P-Q4		
3. Kt-QB3	P-Q3	3. Kt-QB3	Kt-KB3		
4. B-K3	P-QB3	4. PxP	KtxP		
5. Q-Q2	Kt-Q2	5. Kt-B3	KtxKt		
6. P-B3	P-QKt4	6. PxKt	P-QB4		
7. Kt-Q1	Kt-Kt3	7. B-Q3	Kt-QB3		
8. Kt-B2	B-Kt2	8. O-0	B-K2		
9. P-B3	P-QR4	9. R-K1	Q-B2		
10. P-KR4	P-R4	10. Kt-K5	KtxKt		
11. B-Q3	Kt-B5	11. PxKt	B-Q2		
12. BxKt	PxB	12. Q-Kt4	P-KKt3		
13. Kt-K2	P-Q4	13. B-KR6	O-0-0		
14. P-K5	P-K3	14. Q-B3	B-K1		
15. B-Kt5	Q-Kt3	15. KR-Kt1	B-B1		
		16. B-KKt5	B-K2		

17. . BxB	QxB
18. B-R6!	R-Q2
19. RxP!	RxR
20. R-Kt1	Q-B2
21. RxR	QxR
22. QxQch	K-Q1
23. Q-Kt8ch	K-K2
24. Q-Q6mate	

Game No. 1094 - Alekhine

White		Black	
<u>W. Bills</u>		<u>D. Dean</u>	
1. P-K4		Kt-KB3	
2. P-K5		Kt-Q4	
3. P-Q4		P-Q3	
4. Kt-KB3		B-Kt5	
5. B-QB4		PxP	
6. PxP		P-K3	
7. P-KR3		BxKt	
8. QxB		P-QB3	
9. O-O		Kt-Q2	
10. R-K1		Q-B2	
11. B-B4		Kt(2)-Kt3	
12. B-QKt3		KtxB	
13. QxKt		B-K2	
14. Kt-Q2		O-O	
15. Kt-B3		Kt-Q4	
16. Q-KKt4		KR-Q1	
17. P-KR4		B-B1	
18. P-B4		Kt-K2	
19. B-B2		P-KKt3	
20. P-R5		B-Kt2	
21. PxP		RPxP	
22. Q-R3		Kt-B4	
23. BxKt		KPxB	
24. Kt-Kt5		Q-K2	
25. Q-R7ch		K-B1	
26. P-K6		P-B3	
27. Kt-B7		R-Q5	
28. Kt-R8		Resigns	

Game No. 1095 - Nimzoindian

White		Black	
<u>W. Addison</u>		<u>M. Burkett</u>	
1. P-Q4		Kt-KB3	
2. P-QB4		P-K3	
3. Kt-QB3		B-Kt5	
4. P-K3		O-O	
5. B-Q3		P-Q4	
6. Kt-B3		PxP	
7. BxP		P-B4	
8. O-O		Kt-B3	
9. P-QR3		BxKt	
10. PxB		Q-B2	
11. B-Kt2		P-K4	
12. B-K2		R-Q1	
13. Q-B2		P-K5	
14. Kt-Q2		B-B4	
15. Kt-Kt3		PxP	
16. BPxP		Kt-Q4	
17. KR-B1		Q-K2	
18. Q-Q1		Q-Kt4	
19. K-R1		R-Q3	
20. P-QR4		R-K1	
21. B-R3		R-R3	
22. Kt-B5		B-B1	
23. Q-Kt1		K-R1	
24. QR-Kt1		Q-K2	
25. R-Kt3		Q-B2	
26. R-Kt5		P-QKt3	
27. KtxP		KtxP	
28. Kt-Q6		RxKt	
29. BxR		QxB	
30. PxKt		B-R3	
31. R-K5		KtxR	
32. PxKt		RxP	
33. BxB		P-R4	
34. B-Kt5		Q-Q7	
35. R-K1		Q-B6	
36. P-R3		Q-B1	
37. Q-B1		Resigns	

Game No. 1096 - English

White	Black
<u>W. Addison</u>	<u>W. Bills</u>
1. P-QB4	P-KB4
2. P-KKt3	Kt-KB3
3. B-Kt2	P-KKt3
4. Kt-QB3	B-Kt2
5. P-Q3	0-0
6. B-Q2	P-K4
7. Q-B1	P-B3
8. B-KKt5	Kt-R3
9. Kt-KR3	Kt-B2
10. P-B4	P-Q3
11. 0-0	Kt-K3
12. B-R4	Q-Kt3ch
13. K-R1	B-Q2
14. Q-Q2	R/R-K1
15. R/R-K1	Kt-Kt5
16. P-K4	Kt-Q5
17. Kt-B2	B-R3
18. KtxKt	PxKt
19. B-Kt5	BxB
20. PxB	Kt-B6
21. BxKt	PxB
22. R-K3	B-Kt5
23. R-B2	R-B7
24. P-KR3	BxP
26. R3xP	RxR
27. RxR	B-Kt5
28. R-B6	R-KB1

Drawn by agreement.

Game No. 1097 - French

White	Black
<u>D. Blohm</u>	<u>S. Kornher</u>
1. P-K4	P-K3
2. P-Q4	P-Q4
3. Kt-Q2	Kt-KB3
4. P-K5	KKt-Q2
5. QKt-B3	P-QB4
6. P-QB3	Kt-QB3
7. B-Q3	Q-Kt3
8. KKt-K2	PxP
9. PxP	P-KB3
10. PxP	KtxP

11. 0-0	B-Q3
12. B-KB4	BxB
13. KtxB	0-0
14. Q-Q2	Q-B2
15. KR-K1	Kt-KKt5
16. P-KKt3	P-KKt3
17. Kt-Kt5	KtxQP
18. BxP	Kt-B6ch
19. KtxKt	PxB
20. Kt-Kt5	R-B3
21. P-KR3	Kt-K4
22. QR-B1	

The State Champion misses a trick here: 22. KtxQP, PxKt; 23. QxPch, Kt-B2; 24. R-K8ch, K-Kt2; 25. Kt-K4 and Black is lost.

22. ...	Q-Q3
23. Q-Q4	R-B4
24. Kt-K4	Kt-B6ch
25. K-Kt2	KtxRch
26. RxKt	Q-B1
27. KtxKtP	Q-Kt2
28. QxQch	KxQ
29. Kt-Q7	R-K4
30. R-QB1	RxKt
31. KtxB	R-QB5
32. RxR	PxR
33. Kt-Q6	P-QKt4
34. KtxKtP	R-QKt1
35. KtxRP	RxKtP
36. K-B1	P-B6
37. Resigns	

Monterey International July 1969Game No. 1098 - Budapest

White	Black
<u>W. Addison</u>	<u>T. Lux</u>
1. P-Q4	Kt-KB3
2. P-QB4	P-K4
3. PxP	Kt-K5?!
4. P-QR3!	
Reshevsky's bust.	
4. ...	P-QKt3
5. Kt-KB3	...

If 5. Q-Q5, Kt-B4; 6. QxR, B-Kt2;
7. QxRP, Kt-B3 and she goes. Very
interesting is Acers-Burger, San
Francisco, 1969 which went 5.
Kt-Q2, B-Kt2; 6. Q-B2, KtxKt; 7.
BxKt, B-QB4; 8. P-K3 (8. P-QKt4?
BxPch; 9. KxB, Q-R5ch; 10. P-Kt3,
Q-Q5ch; 11. P-K3, QxR), P-QR4;
9. 0-0-0, Q-R5; 10. B-B3, B-K5.

5. ... B-Kt2
6. P-K3 P-Q3
7. QKt-Q2?!

White's idea is basically correct
and he should now consolidate
with the simple 7. PxP, BxP;
8. B-K2, and with care by White
Black's lead in development means
nothing. Now Black has enter-
prising counterplay and a king
in the shooting gallery - all
for a pawn!

7. ... PxP
8. KtxKt?!

Both 8. KtxP and 8. B-K2 seem
better, but they are not.

8. ... QxQch
9. KxQ BxKt
10. KtxP B-Q3
11. Kt-Q3 Kt-B3
12. P-B3 B-Kt3
13. B-Q2 0-0-0
14. K-K1 KR-K1!

14... BxKRP is a waste of time.

15. R-Q1

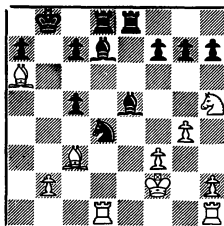
15. P-K4, P-B4!

15. ... BxQRP

This wins!

16. P-K4 B-Q3
17. P-B5 PxP
18. Kt-B4 BxKP!

19. B-R6ch K-Kt1
20. K-B2 B-B4
21. P-KKt4 B-Q2
22. Kt-R5 B-K4
23. B-B3 Kt-Q5



The critical position. Black
threatens to dominate the board with
B-QB3. If 24. P-Kt4, KtxP!; 25.
PxP, B-QB3. It seems that 22. Kt-R5
was a bad idea, since now Kt-Kt3
offers the only chance.

24. P-B4? BxKtP
25. PxB BxR

Better than winning a full piece
back with BxKt, because of the
Pawn.

26. RxB RxP
27. Kt-Kt3

If 27. KtxP, R-Kt4!; 28. R-KKt1,
RxR; 29. KxR, R-Kt1 kills.

27. ... R-Q3
28. B-B4 R-K1
29. R-K1 RxR
30. KxR R-KR3
31. BxP RxP
32. K-B1 R-R5
33. K-Kt2 R-Kt5
34. K-R3 R-B5
35. B-Kt8 P-Kt4!
36. K-Kt2 P-KR3
37. B-R7 K-Kt2
38. B-Q3 K-Kt3

- 39. Kt-K2 KtxKt
- 40. BxKt P-QR4
- 41. B-Kt7 R-KR5
- 42. K-Kt3 P-R5
- 43. B-Kt4 K-Kt4

Resigns.

Very enterprising use of gambit spirits by fierce Mr. Tom Lux! (He won this event 5-0.)

Game No. 1099 - Sicilian

White	Black
<u>T. Lux</u>	<u>R. Hammie</u>
1. P-K4	P-QB4
2. Kt-KB3	P-Q3
3. P-Q4	PxP
4. KtxP	Kt-KB3
5. Kt-QB3	P-QR3
6. B-KKt5	P-K3
7. Q-B3	P-R3?!
8. B-R4	

8. BxKt leaves White little better in the endgame; 8. ... QxB; 9. QxQ, PxQ or 8. ... KtPxB; 9.0-0-0. But Lux plays for mate!

- 8. ... QKt-Q2
- 9. 0-0-0 B-K2
- 10. K-Kt1 P-KKt3?
- 11. BxKt! BxB
- 12. Q-Kt3! Q-Kt3?!

Black's position is very bad. I would have tried 12. ... B-K4; 13. P-B4, BxKt; 14. RxB, Q-K2; and much praying.

- 13. KtxP! PxKt
- 14. RxP Q-B4
- 15. RxPch K-B2
- 16. P-K5! KxR

16...BxP; 17. White mates in 2 and 16... KtxP loses to 17.RxBch.

- 17. PxB K-B2

Horrible is 17... KtxP; 18.QxP!, R-KKt1; 19. QxKtch. (Unclear is 19. B-B4ch, QxB; 20. R-Klch, K-Q2; 21. QxKt, K-B2.)

- 18. Kt-K4! Q-Q5
- 19. B-B4ch K-K1
- 20. Kt-Q6ch K-B1
- 21. R-K1 QxP(3)
- 22. Kt-K8! Q-B3
- 23. Kt-Q6!

Sealing Black's Queen from defense.

- 24. ... Kt-Kt3
- 25. QxP B-K3
- 26. Q-B6ch K-Kt1
- 27. BxBch K-R2
- 28. Q-B7mate

Sunnyvale Qualifier, 1968

Game No. 1100 - French

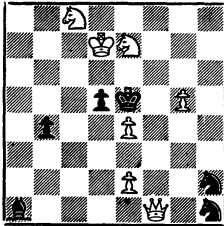
White	Black
<u>J. Acers</u>	<u>W. Bills</u>
1. P-K4	P-K3
2. P-Q4	P-Q4
3. Kt-QB3	B-Kt5
4. P-K5	P-QB4
5. P-QR3	BxKtch
6. PxB	Kt-QB3
7. Kt-KB3	Kt-K2
8. P-QR4	Q-R4
9. Q-Q2	B-Q2
10. B-QR3	P-QKt3?!
11. B-Kt5	P-QR3?
12. B-Q3	P-B5
13. B-Kt4	Resigns

TASKS:

No. 287

J. G. Martin, Brazil

First Prize, Ex Equo, BCF, 1968

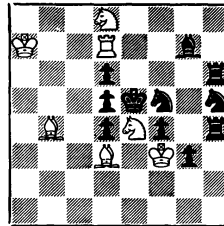


Mate in 3

No. 288

Toow Hian Bwee, Germany

Third Prize, Ex Equo, BCF, 1968



Mate in 3

The British Chess Federation holds an annual composing tourney that has a unique record in the chess field, games or problems. Unruffled by the gradual erosion of interest in chess composition, as evidenced by the disappearance of problems from newspaper columns and magazines, this eminent group continues to sponsor and elicit the support of the world's composers and solvers.

The two problems above give evidence that this rear-guard effort is worthwhile!

SOLUTIONS:

- No. 257 (Taffs): 1. Se6, Kd3; 2. Qel. 1. Sa6?, Kd3!
 No. 258 (Knotek): 1. Sc6, Pd4; 2. Sxd4ch. 1... Kf7; 2. Se5ch.
 1... Kf5; 2. Qh6.
 No. 259 (Knotek): 1. Rd7, Pxd4; 2. Qb5ch. 1... Sxd4 and Sa7;
 2. Qxe5ch. 1... Kc8 and Ka8; 2. Rd8ch.
 No. 260 (Barnes): 1. Qe6! 1. Qa3?, Bc5! 1. Qxf6?, Sc4!
 1. Qxb6?, Qf8!
 No. 269 (ten Cate): 1. Sf3. (1) SxP. (2) 1. Se5. (3) 1. Sf1.
 (4) 1. Sf3.
 No. 270 (Dimitrov): 1. Rg1, Kf2; 2. Qa1, Pe2; 3. Qa7mate! etc.
 No. 271 (Soukup-Bardon) 1. Kh5, Ke6; 2. fSe3, Pb3; 3. Kg4!, Ph5+;
 4. Kh4, Kd7; 5. Sd1 followed by Sd2.

* * *

TOURNAMENT ANNOUNCEMENTS

* * *

MECHANICS' INSTITUTE AMATEUR CHAMPIONSHIP

Date: September 12-13-14, 1969
5-Round Swiss, for players rated below Expert
Place: Mechanics' Institute Chess Room, 57 Post Street,
San Francisco
Registration: Alan W. Bourke, Director, Mechanics' Chess Room

CENTRAL CALIFORNIA OPEN AND QUALIFYING TOURNAMENT

Date: October 17-18-19, 1969 (5-Round Swiss)
Place: YWCA, 1122 - 17th Street, Sacramento
Entry Fee: \$10 and membership in USCF and CSCF
Registration to: O. Bender, 2549 Rio De Oro Way, Sacramento 94826
Registration closes at 8:00 pm, October 17th.

Entrants who live outside the Sacramento area and who do not wish to come to Sacramento for the first round should register early. It may be possible to arrange first round game with another entrant from your area.

Schedule: Round 1: 8 pm Friday; Round 2: 9 am Saturday;
Round 3: 3 pm Saturday; Round 4: 10 am Sunday;
Round 5: 4 pm Sunday. (40 moves in 2 hours)

NORTHERN CALIFORNIA CHAMPIONSHIP & QUALIFYING TOURNAMENT

Date: November 14-15-16, 1969 (5-Round Swiss)
Place: Mechanics' Institute Chess Room, 57 Post Street,
San Francisco
Entry Fee: \$10 plus USCF and CSCF membership
Payable to: Alan W. Bourke, Director, Mechanics' Institute Chess
Room, 57 Post Street, San Francisco, CA 94104