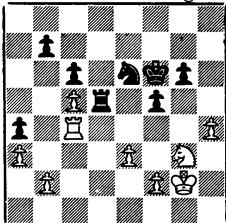


# THE CALIFORNIA CHESS REPORTER

VOLUME XX, NUMBER 1

July-August 1970

Addison-Weinberger



33...KtxP; 34. P-K4  
and now the "touch  
move" rule required  
Black to play 34...  
PxP; whereupon White  
won a piece with 34.  
RxKt.

FROM: 244 Kearny Street, 4th Floor  
San Francisco, Calif. 94108

TO:

George M. Farly  
12425 Filera Rd.  
San Diego, CA 92128

# THE CALIFORNIA CHESS REPORTER

Vol. XX, No. 1

\$4 per year

July-August 1970

THE CALIFORNIA CHESS REPORTER, 244 Kearny Street, San Francisco 94108

Published Bi-monthly

Official Organ of the California State Chess Federation

Editor: Guthrie McClain

Associate Editors: Gordon S. Barrett, Los Angeles; Dr. Mark W. Eudey, Berkeley;

Neil T. Austin, Sacramento; Irving Rivise, Los Angeles

Games Editor: Jude F. Acers

Guest Annotator: I. M. William G. Addison

Reporter Tasks: Robert E. Burger

Second-class postage paid at San Francisco, California

## CONTENTS

California Junior Championship...2-3	CCCA Open at San Jose.....9-10
Pacific Southwest Open.....3-5	Whittier Spring Fever Open.13-14
Monterey International Open.....6-8	Game of the Month.....14-16
Mechanics' Institute Invitational...8	Games.....16-19
Cafe Figaro Open.....9-10	Tasks.....20

## THE REPORTER IN TWENTIETH YEAR

With this issue The California Chess Reporter enters its twentieth year. We are happy to have lasted this long, and as we reflect upon the events of past years we realize that it was all useful and productive. We have delayed publication on numerous occasions but our readers realize that we have to make a living also, and have been tolerant. We have put out every issue eventually, although we sometimes take more time.

The Reporter was started by Dr. H. J. Ralston and Guthrie McClain in August, 1951. The sponsor was the Northern California Chess Association. The second volume carried on its masthead, "Official Organ of the California State Chess Federation", a new organization. Dr. Ralston withdrew from the magazine in 1953 for reasons of health and the present Editor has done both editing and printing from that time on.

There have been many changes since the early days. At first, it was easy to print complete tournament tables because there were fewer tournaments and not so many players. Now it has become necessary to trim tournament reports to less than half-size. Look at the tournaments reported in this issue! California Junior Championship, 64 players; Pacific Southwest Open, 158; Monterey International Open, 156; Cafe Figaro Open, 97; Central California Chess Association, 112. Only ten years ago a similar group of tournaments averaged only 33 players! As a further sign of progress,

MORRISEY CALIFORNIA STATE JUNIOR CHAMPION

Kenneth Morrisey of North Hollywood won the State Junior Championship in June with a score of  $5\frac{1}{2}-\frac{1}{2}$ , one-half point ahead of Jeff Kent, Roy Ervin, Roger Myers, Larry Nezhni and Robert Newbold, all with 5 points. The tournament was held at the Memorial Building of Los Angeles High School.

The tournament was sponsored by the Piatigorsky Foundation and was directed by international grandmaster Isaac Kashdan. There were 64 contestants.

CALIFORNIA JUNIOR CHAMPIONSHIP, JUNE 1970

	1	2	3	4	5	6	Score
1. K. Morrisey	W41	W25	W23	W7	W9	D4	$5\frac{1}{2}-\frac{1}{2}$
2. J. Kent	W32	W17	W14	D8	D3	W13	5 - 1
3. R. Ervin	W47	W18	D22	W15	D2	W9	5 - 1
4. R. Myers	D31	W42	W43	W22	W8	D1	5 - 1
5. L. Nezhni	W40	W24	L27	W25	W14	W21	5 - 1
6. R. Newbold	L27	W58	W31	W17	W20	W11	5 - 1
7. C. Barnes	W48	W26	D11	L1	W24	W22	$4\frac{1}{2}-1\frac{1}{2}$
8. S. Schwartz	W30	W21	W20	D2	L4	W35	$4\frac{1}{2}-1\frac{1}{2}$
9. G. Brinkley	W50	W35	W13	W27	L1	L3	4 - 2
10. A. S. Levi	W38	L22	W51	D24	W35	D12	4 - 2
11. D. Berry	D42	W46	D7	W28	W27	L6	4 - 2
12. R. Smith	D46	D31	W38	D18	W29	D10	4 - 2
13. J. Kolkey	W64	W51	L9	W30	W16	L2	4 - 2
14. K. Leonhardt	W62	W55	L2	W49	L5	W28	4 - 2
15. D. A. Levy	W57	D43	W19	L3	D18	W30	4 - 2
16. R. Basich	L55	W45	W32	W23	L13	W33	4 - 2
17. R. Gordon	W34	L2	W33	L6	W31	W32	4 - 2
18. B. Petersen	W59	L3	W48	D12	D15	W27	4 - 2
19. P. Koploy	W39	D23	L15	W47	L22	W41	$3\frac{1}{2}-2\frac{1}{2}$
20. C. Davidson	W60	W49	L8	W52	L6	D25	$3\frac{1}{2}-2\frac{1}{2}$
21. R. Hamilton	W44	L8	D40	W42	W43*	L5	$3\frac{1}{2}-2\frac{1}{2}$
22. D. Kristofferson	W53	W10	D3	L4	W19	L7	$3\frac{1}{2}-2\frac{1}{2}$
23. B. Dickinson	W61	D19	L1	L16	W42	W52	$3\frac{1}{2}-2\frac{1}{2}$
24. M. Saylor	W56	L5	W57	D10	L7	W47	$3\frac{1}{2}-2\frac{1}{2}$
25. B. Weiner	W54	L1	W50	L5	W51	D20	$3\frac{1}{2}-2\frac{1}{2}$
26. P. B. Grad	W63	L7	D47	L43	W57	W39	$3\frac{1}{2}-2\frac{1}{2}$
27. R. Melniker	W6	W33	W5	L9	L11	L18	3 - 3
28. Y. Kupree	L43	W60	W53	L11	W52	L14	3 - 3
29. J. Williams	W37	--	D35	W41	L12	D45	3 - 3
30. S. Shapero	L8	W61	W56	L13	W55	L15	3 - 3

	1	2	3	4	5	6	Score
31. R. Fisher	D4	D12	L6	W53	L17	W55	3 - 3
32. M. Crane	L2	W62	L16	W48	W36	L17	3 - 3
33. M. Vargas	W36	L27	L17	W46	W49	L16	3 - 3
34. C. Winzer	L17	L56	W54	L36	W53	W49	3 - 3
<u>2½ Points:</u>	35. J. Birkel, 36. J. McCaffrey, 37. B. Murdock, 38. D. Myers, 39. G. MacLeon, 40. G. Eding, 41. M. Keown, 42. L. L. Smith, 43. A. Carlson, 44. T. Martin, 45. G. Smith, 46. W. Denman, 47. R. Flacco, 48. S. Maurer.						
2 Points:	49. A. Meshnik, 50. G. Fitzgerald, 51. D. Kapley, 52. F. Mangone, 53. T. Eum, 54. K. Bauer, 55. A. Martin, 56. D. Mikuni.						
1½ Points:	57. R. Johnson, 58. D. Hartman, 59. A. Kaufman.						
1 Point:	60. D. Hassalevris, 61. M. Brower, 62. R. Sully, 63. M. Conley.						
0 Points:	64. J. VanCuren.						

#### COMMONS AND TASEV TIE FOR FIRST IN PACIFIC SOUTHWEST OPEN

Kim Commons of Huntington Beach and Miroslav Tasev of Toronto tied for first place in the Pacific Southwest Open, held at Santa Monica in July. Commons, a talented junior player, and Tasev, a visitor from Canada, did not play one another, and each had six wins and one draw for  $6\frac{1}{2}-\frac{1}{2}$ . Harry Mayer of Los Angeles and Tibor Weinberger of Santa Monica tied for third and fourth places with 6-1 scores. There were 158 contestants. William Bragg directed.

#### NINTH ANNUAL PACIFIC SOUTHWEST OPEN, SANTA MONICA, JULY 2-5, 1970

	1	2	3	4	5	6	7	Score
1. M. Tasev	W52	W33	W41	D6	W13	W23	W9	$6\frac{1}{2}-\frac{1}{2}$
2. K. Commons	W89	W44	D18	W68	W3	W36	W16	$6\frac{1}{2}-\frac{1}{2}$
3. H. Mayer	W53	W32	W15	W4	L2	W19	W11	6 - 1
4. I. Weinberger	W125	W22	W14	L3	W15	W73	W12	6 - 1
5. J. Hanken	W61	D92	W65	W40	L36	W68	W28	$5\frac{1}{2}-1\frac{1}{2}$
6. L. Kupersmith	W116	W17	W45	D1	L9	W40	W38*	$5\frac{1}{2}-1\frac{1}{2}$
7. J. Loftsson	W114	W107	D40	D12	D42	W46	W25	$5\frac{1}{2}-1\frac{1}{2}$
8. C. Schain	D133	W31	W77	W47	L19	W72	W23	$5\frac{1}{2}-1\frac{1}{2}$
9. R. Martin	W72	W158*W46	D13	W6	W11	L1	L1	$5\frac{1}{2}-1\frac{1}{2}$
10. B. Lainson	D93	W147	W154	L23	W47	W42	W17	$5\frac{1}{2}-1\frac{1}{2}$
11. W. Cunningham	W58	W100	W25	W29	W26	L9	L3	5 - 2
12. P. Shuey	W109	W49	D23	D7	W45	W26	L4	5 - 2

	1	2	3	4	5	6	7	Score
13. E. Wicher	W131	W86	W35	D9	L1	W78	D18	5 - 2
14. D. Setterlee	W97	L64	L4	W49	L17	W45	W48	5 - 2
15. R. Pease	W75	W54	L3	W89	L4	W88	W30	5 - 2
16. P. Velliotes	W99	W135	W76	L26	W104	W43	L2	5 - 2
17. G. Brooks	W153	L6	W99	W125	W14	W27	L10	5 - 2
18. J. Grinblat	W96	W70	D2	D104	D86	W76	D13	5 - 2
19. R. Furman	L90	W130	W52	W87	W8	L3	W54	5 - 2
20. K. Hense	D83	W66	W91	D28	L24	W92	W44	5 - 2
21. E. Fernandez	L86	W71	D56	D31	W115	W87	W41	5 - 2
22. R. DeLaura	W120	L4	L89	W126	W79	W49	W60	5 - 2
23. R. Gauntt	W111	W87	D12	W10	W28	L1	L8	4½-2½
24. A. Kraus	W130	L29	W105	W56	W20	L38	D35	4½-2½
25. M. Rubin	W113	W90	L11	D34	W65	W32	L7	4½-2½
26. M. Siero	W141	W98	W78	W16	L11	L12	D42	4½-2½
27. E. Bersbach	W69	D62	W57	D73	W44	L17	D33	4½-2½
28. S. Geller	W134	W81	W43	D20	L23	W77	L5	4½-2½
29. I. Atkins	W71	W24	W42	L11	L73	W107	D37	4½-2½
30. L. Jacobsen	L55	W110	D58	W114	W51	W82	L15	4½-2½
31. G. Mann	D57	L8	W121	D21	W75	D94	W73	4½-2½
32. R. Snyder	W146	L3	W102	W88	D38	L25	W82	4½-2½
33. D. Zes	W103	L1	W51	W37	W41	-	D27	4½-2½
34. J. Horning	W148	L46	W55	D25	L40	W91	W152	4½-2½
35. S. Weinbaum	W124	W67	L13	W135	L43	W86	D24	4½-2½
36. G. Henin	D101	W83	W92	W84	W5	L2	-	4½-2½
37. E. Hildreth	W142	L85	L72	W106	W125	W90	D29	4½-2½
38. G. Hunnex	D91	W139	D75	W148	D32	W24	L6*	4½-2½
39. S. Vihon	W115	L43	D53	L77*	W140	W117	W72	4½-2½
40. D. Berry	W126	W80	D7	L5	W34	L6	D59	4 - 3
41. I. Nezhni	W102	W48	L1	W54	L33	W64	L21	4 - 3
42. D. Kendall	W118	W88	L29	W61	D7	L10	D26	4 - 3
43. J. Blackstone	W63	W39	L28	W48	W25	L16	-	4 - 3
44. P. McCarthy	W94	L2	W131	W59	L27	W104*	L20	4 - 3
45. A. Wicher	W119	W60	L6	W99	L12	L14	W97	4 - 3
46. R. Plock	W105	W34	L9	D93	W63	L7	D62	4 - 3
47. M. McSorley	W108	D104	W144	L8	L10	W89	D52	4 - 3
48. L. Piliavin	W151	L69	W96	L43	W74	W80	L14	4 - 3
49. W. Potts	W149	L12	W74	L14	W108	L22	W94	4 - 3
50. C. Davidson	W74	L76	D114	D53	W133	D59	D58	4 - 3
51. R. LaBre	L60	W119	L33	W95	L30	W103	W92	4 - 3
52. D. Slechta	L1	D63	L19	W139	W138	W85	D47	4 - 3
53. J. Williams	L3	W127	D39	D50	L80	W118	W100	4 - 3
54. P. Grad	W137	L15	W67	L41	W128	W95	L19	4 - 3
55. R. Singerman	W30	L78	L34	L79	W152	W131	W88	4 - 3
56. B. Bowe	W73	L95	D21	L24	W103	W75	D74	4 - 3

	1	2	3	4	5	6	7	Score
57. D. Rubinsky	D31	W140	L27	L91	W113	W96	D68	4 - 3
58. L. Hunt	L11	W129	D30	L85	W83	W84*	D50	4 - 3
59. S. Rabinowitz	L88	W155	W128	L44	W84	D50	D40	4 - 3
60. D. Roy	W51	L45	D117	W116	D92	W98	L22	4 - 3
61. L. Wolfley	W145	D27	L104	W138	L82	W116	D46	4 - 3
62. M. Hoyt	L5	W156	W100	L42	L87	W106	W98	4 - 3
63. D. Bragg	L43	D52	W153	W144*L46		D100	W95	4 - 3
64. A. Koopal	W122	L14	W134	L76	W124	W41	W102	4 - 3
65. D. Levy	D139	W121	L5	W101	L25	D102	W105	4 - 3
66. M. Saylor	D144	L20	D94	L124	W145	W99	W77	4 - 3
67. R. Downing	W127	L35	L54	W109	L98	W141	W90	4 - 3
68. W. Belke	W110	D77	W138	L2	W93	L5	D57	4 - 3
69. B. Collins	L27	W145	L87	L74	W122	W115	W86	4 - 3
70. B. Myers	W112	L18	L88	W129	L72	W126	W108	4 - 3
71. L. Mulinex	L29	L21	L132	W152	W129	W124	W87	4 - 3

- 3½ Points: 72. D. Gosiewski, 73. C. Novitski, 74. J. Adams, 75. F. Schwarz, 76. S. Sholomson, 77. J. Dinan, 78. R. Ervin, 79. D. Zechiel, 80. V. Jovanovic, 81. B. Hamilton, 82. G. Gean., 83. D. Hinrichsen, 84. K. Stani, 85. J. Walter.
- 3 Points: 86. M. Mills, 87. D. Cotten, 88. E. Sculman, 89. S. Cunningham, 90. F. Borges, 91. R. Fisher, 92. E. Faelten, 93. E. Futh, 94. C. Strong, 95. A. Fogel, 96. G. Fitzgerald, 97. D. Krystall, 98. W. Thomson, 99. D. Nystrom, 100. C. Olson, 101. R. Walmisley, 102. J. Buonocore, 103. T. Dean, 104. E. Kennedy, 105. Kristofferson, 106. A. Basner, 107. J. Denton, 108. A. Beck, 109. C. Fotias, 110. O. Higgins, 111. E. Staples, 112. M. Vargas.
- 2½ Points: 113. J. Wilson, 114. P. Razien, 115. T. DeGhionno, 116. D. Sefton, 117. H. Askwith, 118. M. Fitzgerald, 119. E. Briggs, 120. A. Patsch, 121. R. Howard, 122. G. Schweger, 123. V. Saporito.
- 2 Points: 124. L. Roberts, 125. J. Varis, 126. R. Goldie, 127. H. Boushell, 128. P. Pedersen, 129. N. Kravitz, 130. H. Buddeberg, 131. R. Joseph, 132. S. Maurer, 133. N. Valenti, 134. V. Ahmed, 135. R. Rogers, 136. R. Schain, 137. G. Sisson, 138. M. Noriega, 139. J. Hikado.
- 1½ Points: 140. N. Regan, 141. G. Leeman, 142. R. Davis, 143. M. Zachary, 144. C. Pilnick.
- 1 Point: 145. M. Grant, 146. V. Hooper, 147. R. Brooks, 148. B. Kohn, 149. D. Weikel, 150. B. Harris, 151. C. Budd.
- ½ Point: 152. C. Preis, 153. A. Carlson
- 0 Points: 154. E. Gardos, 155. D. Landis, 156. W. Mohawk, 157. R. Newbold, 158. R. Johnson.

KAPLAN, EVANS, THORNALLY TIE FOR FIRST AT MONTEREY OPEN

Former world junior champion Julio Kaplan tied for first place with grandmaster Larry Evans and U. S. master Frank Thornally and won the Monterey trophy by one-half tie-breaking point. The cash was divided three ways - \$142 each. Because of the record attendance, 156, and the five rounds of the tournament, the three top players did not meet.

A total of \$1,053.50 was distributed in prizes. Ted Yudacufski directed.

SIXTH ANNUAL MONTEREY INTERNATIONAL OPEN, JUNE 27-28, 1970

	1	2	3	4	5	Score
1. J. Kaplan	W52	W13	W92	W42	W21	5 - 0
2. L. Evans	W79	W127	W48	W12	W9	5 - 0
3. F. Thornally	W66	W71	W90	W15	W11	5 - 0
4. C. Capps	D26	W34	W83	W29	W23	4½ - ½
5. M. Goodall	W50	D67	W120	W25	W37	4½ - ½
6. R. Brent	W156*	W96	W35	D10	W22	4½ - ½
7. D. Fritzingier	W16	W47	W49	L11	W44	4 - 1
8. B. Wolf	W41	W24	W73	D23	D10	4 - 1
9. J. Tarjan	W55	W38	W76	W36	L2	4 - 1
10. A. Suhobeck	W78	W44	W89	D6	D8	4 - 1
11. J. Wallen	W98	W95	W45	W7	L3	4 - 1
12. D. Waterman	W46	W136	W69	L2	W47	4 - 1
13. R. Hammie	W80	L1	W110	W41	W53	4 - 1
14. J. Farwell	L42	W26	W61	W93	W54	4 - 1
15. G. B. Jones	W72	W65	W88	L3	W39	4 - 1
16. A. Gates	L7	W94	W113	W60	W35	4 - 1
17. E. Syrett	L34	W57	W105	W80	W40	4 - 1
18. D. Reynolds	L65	W75	W96	W51	W43	4 - 1
19. R. Bobc	W155	L42	W103	W69	W36	4 - 1
20. V. Jovanovic	L67	W50	W131	W88	W38	4 - 1
21. D. Blohm	W31	W33	W60	D37	L1	3½ - 1½
22. J. Mondragon	D28	W30	W66	W67	L6	3½ - 1½
23. J. Grefe	W115	W129	W68	D8	L4	3½ - 1½
24. B. Sredanovic	W43	L8	D40	W82	W65	3½ - 1½
25. G. Ramirez	D39	W28	W122	L5	W72	3½ - 1½
26. H. Edelstein	D4	L14	W125	W123	W34	3½ - 1½
27. R. Hoppe	W53	D40	L39	W122	W77	3½ - 1½
28. R. Pease	D22	L25	W98	W121	W74	3½ - 1½
29. F. Peterson	W101	D122	W136*	L4	W92	3½ - 1½
30. D. Obstfeld	D37	L22	W97	W126	W76	3½ - 1½
31. Dr. F. Gamboa	L21	W133	W102	D49	W73	3½ - 1½
32. R. Alexander	W112	L88	W107	D71	W70	3½ - 1½
33. G. Wilson	W133	L21	W114	D76	W85	3½ - 1½

	1	2	3	4	5	Score
34. F. Berry	W17	L4	W144*	W56	L26	3 - 2
35. A. Sacks	W57	W70	L6	W59	L16	3 - 2
36. L. Christiansen	W75	W59	W56	L9	L19	3 - 2
37. R. Wilcox	D30	W58	W100	D21	L5	3 - 2
38. M. Wilkerson	W51	L9	W95	W45	L20	3 - 2
39. G. Lee	D25	D66	W27	W100	L15	3 - 2
40. J. Hurt	W106	D27	D24	W68	L17	3 - 2
41. R. Bustamente	L8	W55	W86	L13	W91	3 - 2
42. B. Menas	W14	W19	W91	L1	-	3 - 2
43. M. Quinlivan	L24	W64	W111	W89	L18	3 - 2
44. S. Kornher	W82	L10	W139	W48	L7	3 - 2
45. M. Gazse	W103	W63	L11	L38	W118	3 - 2
46. A. DiMilo	L12	W62	D81	W120	D49	3 - 2
47. A. Raymond	W94	L7	W99	W90	L12	3 - 2
48. D. Haynes	W81	W121	L2	L44	W10	7 3 - 2
49. V. Pope	W117	W130	L7	D31	D46	3 - 2
50. R. Gribble	L5	L20	W132	W103	W93	3 - 2
51. E. Hamm	L38	W52	W101	L18	W95	3 - 2
52. Fred Crofut	L1	L51	W141	W111	W89	3 - 2
53. B. Gross	L27	W106	W137	W91	L13	3 - 2
54. D. Rogosin	L70	W109	W108	W92	L14	3 - 2
55. B. Garrett	L9	L41	W142	W98	W96	3 - 2
56. J. Maneely	W143	W74	L36	L34	W106	3 - 2
57. D. Draper	L35	L17	W150	W102	W100	3 - 2
58. H. Guadarrama	W64	L37	L93	W139	W90	3 - 2
59. D. Sewell	W138	L36	W119	L35	W101	3 - 2
60. W. Stuart	W154	W124	L21	L16	W109	3 - 2
61. K. Burnett	L68	W135	L14	W133	W126	3 - 2
62. G. Oakes	L136	L46	W151	W104	W99	3 - 2
63. K. Burns	W132	L45	L71	W130	W94	3 - 2
64. A. Eydal	L58	L43	W152	W131	W88	3 - 2

- 2½ Points: 65. T. Taylor, 66. M. Ewell, 67. J. Wollschlager, 68. C. J. Daly, 69. F. Penoyer, 70. G. Newmann, 71. G. Rey, 72. C. Singleton, 73. D. Rail, 74. G. Temme, 75. G. Winrod, 76. E. Staples, 77. H. Rogosin, 78. R. Santigiago, 79. H. Rosenbaugh, 80. F. Crofut, 81. P. Rosogin, 82. D. Campbell, 83. K. Bach, 84. C. Nystrom, 85. B. Lanson, 86. D. Oppedal, 87. D. Tucker.
- 2 Points: 88. R. Osborn, 89. R. Pina, 90. F. McEntire, 91. C. Fotias, 92. R. Feliciano, 93. D. Henry, 94. J. Ets-Hokin, 95. J. Phillips, 96. T. Montemurro, 97. T. Reese, 98. B. Kennedy, 99. J. Williams, 100. R. Smith, 101. M. Lein, 102. D. Anderson, 103. A. Hanson, 104. G. Boer, 105. L.



2 Points:	Bonsock, 106. B. Meyer, 107. M. Vatcher, 108. R. Atkinson, (contl.) 109. H. Mattingly, 110. B. DeWolfson, 111. R. Korte, 112. D. Pearce, 113. F. Mills, 114. C. O'Brien, 115. H. Mohrmann, 116. J. Gerstl, 117. M. Grant, 118. B. Mills, 119. J. Vatcher.
1½ Points:	120. B. Jansen, 121. W. McClintock, 122. G. Wren, 123. M. Costa, 124. R. Mullins, 125. C. Strong, 126. L. O'Doan, 127. V. Radaikin, 128. A. Gross, 129. J. Davidian.
1 Point:	130. K. Roberson, 131. T. Jackson, 132. C. Lamb, 133. T. Mishler, 134. R. Hyatt, 135. D. Vatcher, 136. L. Jones, 137. S. Lowe, 138. F. Flores, 139. G. Clark, 140. W. Burgess, 141. J. Anderson, 142. P. Grover, 143. J. Purvis, 144. S. Axinn, 145. M. Mehdy, 146. K. Grover, 147. G. Moon, 148. S. Gales.
½ Point:	149. G. Badker, 150. B. Boer, 151. S. Hand.
0 Points:	152. K. Fox, 153. L. Lane, 154. M. DaRosa, 155. J. Gutierrez, 156. A. Olson.

#### BURGER WINS MECHANICS' INSTITUTE INVITATIONAL:

Robert E. Burger won a good victory in the Mechanics' Institute Invitational tournament held last Fall, edging out Frank Thornally and Jude Acers. Burger ran up an insurmountable lead in the first half of the tournament, as he played gambits on everyone. In the second half, Burger played draws but almost failed to win because of a rash of forfeits. At the last moment, a possible forfeit from Blohm to Thornally was ruled a "no-play" instead of a point - and meanwhile, an adjourned game between Burger and Baisley was forfeited by reason of Baisley's illness. Alan Bourke was the tournament director.

#### MECHANICS' INSTITUTE INVITATIONAL, OCTOBER, 1969 - JANUARY 1970

	1	2	3	4	5	6	7	8	9	10	11	Score
1. R. Burger	X	½	1	½	1	½	½	1	1	1	1	8 - 2
2. F. Thornally	½	X	½	-	1	½	1	1	1	1	½	7 - 2
3. J. Acers	0	½	X	1	1	1	½	1	½	1	1	7½-2½
4. B. Blohm	½	-	0	X	0	-	1	1	1	1	0	4½-3½
5. G. Kane	0	0	0	1	X	½	1	0	1	½	1	5 - 5
6. A. Benson	½	½	0	-	½	X	1	½	0	0	1	4 - 5
7. K. Fitzgerald	½	F	½	F	0	0	X	½	1	1	½	4 - 6
8. M. Burkett	0	0	0	0	1	½	½	X	1	0	½	3½-6½
9. A. Baisley	F	0	½	0	0	1	0	0	X	1	1	3½-6½
10. W. Bills	0	0	0	0	½	1	0	1	0	X	1	3½-6½
11. J. Grefe	0	½	F	1	F	F	½	½	0	F	X	2½-7½

ADDISON WINNER OF CAFE FIGARO OPEN

International master Bill Addison of San Francisco won first place in a new event, The Cafe Figaro Open, by a perfect 6 - 0 score. Jim Tarjan was second,  $5\frac{1}{2}-\frac{1}{2}$  and four players tied for third with 5-1 scores: Tibor Weinberger, Dennis Fritzingler, Ed Kennedy, and Ross Stoutenborough.

Addison and Weinberger met in the last round. On the 34th move Addison claimed that Weinberger touched his Pawn at KB4 and should be forced to play PxP. Weinberger denied touching the Pawn and the tournament director, international grandmaster Isaac Kashdan was called upon to make a ruling. After consulting the players and about 30 spectators, Kashdan ruled in favor of Addison's claim. The forced move PxP lost a piece for Weinberger.

The tournament was sponsored by television star Bill Cosby. There were cash prizes and trophies, although there was no entry fee. Games were played at the rate of one per day. Carl Budd, President of the Santa Monica Bay Chess Club, handled organizational details. The Cafe Figaro is located at 9010 Melrose Avenue and it is reported that there will be more tournaments there.

CAFE FIGARO OPEN, LOS ANGELES, JUNE 9-14, 1970

	1	2	3	4	5	6	Score
1. W. Addison	W44	W18	W6	W17	W4	W3	6 - 0
2. J. Tarjan	W90	D19	W70	W16	W10	W15	$5\frac{1}{2}-\frac{1}{2}$
3. T. Weinberger	W52	W36	W29	W21	W5	L1	5 - 1
4. D. Fritzingler	W46	W31	W30	W40	L1	W14	5 - 1
5. E. Kennedy	W80	W78	W20	W39	L3	W18	5 - 1
6. R. Stoutenborough	W62	W51	L1	W41	W40	W13	5 - 1
7. J. Acers	W53	L30	W26	W20	W21	D11	$4\frac{1}{2}-1\frac{1}{2}$
8. J. Blackstone	W45	W22	L11	D30	W31	W32	$4\frac{1}{2}-1\frac{1}{2}$
9. J. Loftsson	W60	L40	W46	D31	W51	W33	$4\frac{1}{2}-1\frac{1}{2}$
10. A. Pollard	W47	W43	D37	W11	L2	W39	$4\frac{1}{2}-1\frac{1}{2}$
11. R. Newboid	W92	W83	W8	L10	W28	D7	$4\frac{1}{2}-1\frac{1}{2}$
12. E. W. Pruner	W25	L17	W79	W36	W35	-	4 - 2
13. C. C. Henin	W59	D70	D32	W37	W17	L6	4 - 2
14. H. Mayer	W88	W42	L39	W24	W23	L4	4 - 2
15. L. Kupersmith	W61	W41	L40	W42	W39	L2	4 - 2
16. J. Mego	W63	D50	W73	L2	D44	W40	4 - 2
17. A. Sacks	W82	W12	W56	L1	L13	W41	4 - 2
18. O. Stumbrs	W64	L1	W63	W53	W34	L5	4 - 2
19. G. Barrett	W65	D2	D44	L28	W59	W43	4 - 2
20. R. Hammie	W74	W34	L5	L7	W45	W44	4 - 2

## CAFE FIGARO OPEN (continued)

	1	2	3	4	5	6	Score
21. F. Shuey	W75	W77	W57	L3	L7	W50	4 - 2
22. G. Rubin	W67	L8	W83	L23	W61	W49	4 - 2
23. H. Pollard	W49	L56	W76	W22	L14	W29	4 - 2
24. R. Neustaedter	W96	L57	W85	L14	W63	W35	4 - 2
25. D. Steers	L12	W82	L34	W83	W30	W37	4 - 2
26. R. Melniker	L34	W65	L7	W84	W36	W38	4 - 2
27. S. Schwartz	W81	L39	D53	W73	L33	W55	3½-2½
28. R. Oster	W72	D32	W50	W19	L11	-	3½-2½
29. J. Hanken	W91	W58	L3	W43	D32	L23	3½-2½
30. P. Kopley	W94*	W7	L4	D8	L25	W51	3½-2½
31. J. Barnard	W85	L4	W67	D9	L8	W53	3½-2½
32. R. Ervin	W97	D28	D13	W58	D29	L8	3½-2½
33. I. Ruzic	L42	W47	D51	W50	W27	L9	3½-2½
34. J. Grefe	W26	L20	W25	W38	L18	-	3 - 3
35. E. Bershach	D73	D37	W62	W61	L12	L24	3 - 3
36. C. B. Jones	W66	L3	W68	L12	L26	W61	3 - 3
37. B. Antman	W48	D35	D10	L13	W46	L25	3 - 3
38. M. Tupas	L83	W64	W66	L34	W60	L26	3 - 3
39. R. Klein	W84	W27	W14	L5	L15	L10	3 - 3
40. K. Morrisey	W89	W9	W15	L4	L6	L16	3 - 3
41. W. Blackmore	W86	L15	W84	L6	W62	L17	3 - 3
42. L. Neuton	W33	L14	W86	L15	L49	W63	3 - 3
43. R. Pease	W87	L10	W69	L29	W68	L19	3 - 3
44. D. Argall	L1	W75	D19	W70*	D16	L20	3 - 3
45. P. McCarthy	L8	W49	L58	W67	L20	W68	3 - 3
46. S. Smoak	L4	W95	L9	BYE	L37	W62	3 - 3
47. P. B. Grad	L10	L33	L49	W64	W69	W74	3 - 3
48. J. Porter	L37	L73	L71	W97	W87	W59	3 - 3
49. S. Goodgold	L23	L45	W47	W80	W42	L22	3 - 3

2½ Points: 50. H. Weitz, 51. C. Jasmin, 52. D. Lither, 53. G. Hoover, 54. J. Birkei, 55. M. Norris.

2 Points: 56. R. Gauntt, 57. P. Quillen, 58. D. Waterman, 59. B. Hamilton, 60. T. Miller, 61. R. Johnson, 62. P. S. Grad, 63. G. Fitzgerald, 64. J. Adams, 65. A. W. Patsch, 66. H. Young, 67. Y. Dupree, 68. E. Staples, 69. A. Willheim.

1½ Points: 70. G. Gean, 71. S. Salter, 72. A. Baker, 73. G. Castleberry, 74. T. Rock, 75. G. Carbajal, 76. A. Carlson.

1 Point: 77. R. Schutt, 78. M. Thomason, 79. R. Lozado, 80. D. Starr, 81. F. Guti, 82. E. Briggs, 83. J. Beckerman, 84. H. Godskesen, 85. J. Legradi, 86. C. Namson, 87. K. Tanner.

½ Point: 88. R. Joseph, 89. A. Kaufman

0 Points: 90. F. Hufnagel, 91. S.P. Cunningham, 92. N. Valenti, 93. A. Viqar, 94. J. Bowen, 95. J. Joseph, 96. D. Ristow, 97. L. Ross

ACERS, JONES TIE FOR FIRST IN CCGA SAN JOSE TOURNAMENT

Jude Acers and C. Bill Jones divided the two top places at San Jose in July. (C. Bill is from Dallas, recently won the Hawaiian championship, and is going to stay in the Bay Area for a while.) The Class A prize in the first section was also a tie: Horst Mohrmann and Alan LaVergne.

The Class B section was also shared: Roger Bonilla and Robert Sferra. The third section was Class C, divided between David Bloomquist and Dennis Myers, and Classes D and E, which was divided between Christopher Black and Alfred Hansen.

This was the biggest tournament ever held in San Jose, with 112 contestants. The tournament directors were Martin E. Morrison and Elwin C. Meyers. The place was the San Jose Central YMCA.

CENTRAL CALIFORNIA CHESS ASSOCIATION OPEN, SAN JOSE, JULY 18-19, 1970

MASTER-EXPERT-CLASS A SECTION					
	1	2	3	4	Score
1. J. Acers	D7	W28	W12	W4	3½ - ½
2. W. Jones	W14	W23	D6	W10	3½ - ½
3. S. von Oettingen	W19	L11	W15	W17	3 - 1
4. J. Iwashita	W15	W18	W9	L1	3 - 1
5. G. Rey	W17	D20	D7	W13	3 - 1
6. A. LaVergne	W25	W29	D2	D8	3 - 1
7. H. Mohrmann	D1	W30	D5	W21	3 - 1
8. E. Osburn	L12	W16	W14	D6	2½-1½
9. B. Lainson	W24	W13	L4	D11	2½-1½
10. J. Spingarn	W16	D12	W11	L2	2½-1½
11. M. Eweil	W27	W3	L10	D9	2½-1½
12. C. W. Barnes	W8	D10	L1	W19	2½-1½

2 Points: 13. G. Boer, 14. R. Santiago, 15. R. Roubal, 16. D. Ultch, 17. S. Malek

1½ Points: 18. L. Hill, 19. H. Radke, 20. C. Pardini, 21. P. Yen.

1 Point: 22. W. T. Adams, 23. J. Walian, 24. E. H. Mueller, 25. J. Weisickie, 26. R. Eldridge, 27. Dr. D. Lieberman, 28. C. Larsen, 29. R. Holloway.

½ Point: 30. W. Garrett.

0 Points: 31. B. Sredanovic.

## CLASS B SECTION

	1	2	3	4	Score
1. R. Bonilla	W17	W8	W11	W4	4 - 0
2. R. Sferra	W12	W22	W6	W5	4 - 0
3. E. Hamm	W32	L13	W15	W16	3 - 1
4. R. Gordon	W15	W20	W7	L1	3 - 1
5. B. Mills	W16	W24	W13	L2	3 - 1
6. M. Gazse	W18	W21	L2	W19	3 - 1
7. R. Howard	W33	W9	L4	W11	3 - 1
8. S. Flowerdew	W28	L1	W30	W24	3 - 1
9. E. Shields	W14	L7	W20	D10	2½-1½
10. J. Bikulcius	L22	W29	W25	D9	2½-1½

2 Points: 11. F. Crofut, 12. H. Barnett, 13. Dr. K. Bach, 14. L. Sourcing, 15. K. Burns, 16. E. Yeung, 17. G. Temme, 18. W. Stuart, 19. F. Pennoyer, 20. K. Burnett, 21. B. Jansen.

1½ Points: 22. C. Whelan, 23. E. Silva, 24. C. Lamb, 25. K. Trigger,  
1 Point: 26. W. Dickinson, 27. R. Weisickle, 28. R. Feliciano, 29. R. Pina, 30. M. Carney.

0 Points: 31. L. Prink, Jr. 32. J. Marks, 33. Julia Malek.

## CLASSES C, D, AND E SECTION

	1	2	3	4	Score
1. D. Myers	W28	W21	W23	W9	4 - 0
2. D. Bloomquist	W15	W25	W4	W6	4 - 0
3. J. Peterson	W48	D10	W13	W16	3½- ½
4. A. Barocio	W38	W22	L2	W20	3 - 1
5. T. Heaton	W26	L20	W38	W27	3 - 1
6. D. Lischinsky	W27	W33	W20	L2	3 - 1
7. K. Fujishin	L11	W48	W21	W28	3 - 1
8. E. J. Rosenthal	W46	W32	L9	W17	3 - 1
9. S. Fujishin	W31	W35	W8	L1	3 - 1
10. D. Harker	W19	D3	D15	W18	3 - 1
11. D. Harris	W7	L16	W22	W25	3 - 1
12. C. Black	L25	W34	W43	W23	3 - 1
13. A. Hansen	W36	W14	L3	W24	3 - 1
14. L. Kohi	D43	L13	W42	W33	2½-1½
15. M. Maloney	L2	W47	D10	W32	2½-1½
16. A. Mock	W30	W11	D17	L3	2½-1½
17. J. M. Watson III	W34	W24	D16	L8	2½-1½

2 Points: 18. M. Lein, 19. W. Martenay, 20. F. Hyatt, 21. F. Pinard,  
22. M. Vasquez, 23. M. Johnson, 24. J. Purvis, 25. K. Weins,  
26. C. O'Brien, 27. R. Benson, 28. M. Schynert, 29. W. Hardy,  
30. M. Tomey, 31. K. Habeeb.

1½ Points: 32. D. Driedger, 33. R. Mullins.

1 Point: 34. R. Allen, 35. R. Merritt, 36. R. Richey, 37. J. Wu,  
38. J. Nitzberg, 39. D. Pearce, 40. K. Guertner, 41.

D. Gordon, 42. P. Freier.  
 $\frac{1}{2}$  Point: 43. T. Beverly.  
 0 Points: 44. A. Yingling, 45. V. Scardino, 46. J. Fagundes,  
 47. B. Boer, 48. G. Tordoff.

KOPLOY WINS WHITTIER SPRING FEVER TOURNAMENT

Paul Koploy won first place in the Open Division at Whittier with a score of  $5\frac{1}{2}-\frac{1}{2}$ . There were three sections and the total to play was 72.

WHITTIER SPRING FEVER TOURNAMENT, 1970

OPEN DIVISION							
	1	2	3	4	5	6	Score
1. P. Koploy	W19	W8	W13	D2	W3	W6	$5\frac{1}{2}-\frac{1}{2}$
2. D. Bicknell	W7	W3	W4	D1	D6	W8	5 - 1
3. W. Dunkin	W12	L2	W10	W4	L1	W9	4 - 2
4. R. Snyder	W9	W6	L2	L3	W13	W10	4 - 2
5. H. Guadarrama	L8	W19	L7	W17	W16	W11	4 - 2
6. J. Barnard	W15	L4	W8	W16	D2	L1	$3\frac{1}{2}-1\frac{1}{2}$
7. R. Henderson	L2	W12	W5	D11	L10	W15	$3\frac{1}{2}-1\frac{1}{2}$
3 Points:	8. Fred Frilling, 9. H. Keesey, 10. W. Thornton, 11. T. Quackenbush, 12. L. Young.						
$2\frac{1}{2}$ Points:	13. C. Olson, 14. D. Argall, 15. J. Pyle.						
2 Points:	16. J. McCaffray, 17. P. Roa, 18. I. Besen.						
$1\frac{1}{2}$ Points:	19. T. Mishler.						
$\frac{1}{2}$ Point:	20. R. Mendoza.						

DIVISION B							
	1	2	3	4	5	6	Score
1. J. Surlow	W8	L7	W14	W9	D4	W3	$4\frac{1}{2}-1\frac{1}{2}$
2. A. Nicoll	W14	W5	L3	D16	W15	W7	$4\frac{1}{2}-1\frac{1}{2}$
3. R. Ford	D16	W4	W2	D7	W6	L1	4 - 2
4. C. Larson	W9	L3	W10	W5	D1	D8	4 - 2
5. D. Hill	W13	L2	W11	L4	W10	W14	4 - 2
6. J. Clifton	W17	W11	L7	W13	L3	W9	4 - 2
7. Frank Frilling	W12	W1	W6	D3	L9	L2	$3\frac{1}{2}-2\frac{1}{2}$
8. J. Salanka	L1	L10	W12	W11	W13	D4	$3\frac{1}{2}-2\frac{1}{2}$
3 Points:	9. H. Gandara, 10. R. Davis.						
$2\frac{1}{2}$ Points:	11. W. McGrann, 12. J. Masamitsu.						
2 Points:	13. N. Tsilides, 14. K. Weichinger, 15. A. Baker, 16. J. Skratulia.						
1 Point:	17. W. Padilla.						
0 Points:	18. J. Brady.						

		DIVISION C						
		1	2	3	4	5	6	Score
1.	R. R. Basich	W31	W29*	W3	W2	W6	D4	5½-½
2.	R. Williams	W29	W4	W7	L1	W9	W6	5 - 1
3.	J. Wilson	W18	W24	L1	W21	W7	W11	5 - 1
4.	C. Faber	W26	L2	W13	W12	W8	D1	4½-1½
5.	E. Hernandez	L7	W28	W24	W10	D11	W17	4½-1½
6.	D. Sassoon	W14	W13	W21	W8	L7	L2	4 - 2
7.	W. Murray	W5	W25	L2	W14	L3	W19	4 - 2
8.	R. Ladd	W10	W11	W15	L6	L4	W22	4 - 2
9.	R. Bonilla	L12	W26	W25	W15	L1	W16	4 - 2
10.	J. Augustine	L8	W33	W32	L5	W29	W15	4 - 2
11.	J. Thomas	W33	L8	W18	W17	D5	L3	3½-2½
12.	R. Perry	W9	L15	W19	L4	D22	W21	3½-2½
13.	M. Hanon	W18	L6	L4	W20	D21	W23	3½-2½

3 Points: 14. P. Doyle, 15. E. Salcido, 16. R. Barton, 17. C. Cantong,  
18. J. Dunkin, 19. G. Benike, 20. S. Pyle.

2½ Points: 21. Rod Basich, 22. R. Koehler, 23. R. Vanover.

2 Points: 24. P. Tiloff, 25. E. Stepp, 26. R. Hand, 27. J. Crandall,  
28. S. Barata.

1½ Points: 29. J. VanInderstine, 30. T. Mealer, 31. N. Lewis.

1 Point: 32. J. Perry, 33. C. Feuchter, 34. D. Crawford.

#### GAME OF THE MONTH

The Cafe Figaro Open was a surprise to regular chess circles. Many of the arrangements were unorthodox, but the tournament was successful and there was a strong field of contestants. There was a thrilling finish, in which international master William G. Addison of San Francisco defeated Tibor Weinberger of Santa Monica. (The finish was disputed, and perhaps there would have been a cloud over the whole affair, except for the fact that Isaac Kashdan was the tournament director. Kashdan is not only an International Grandmaster, but he is also an International Arbiter. The tournament organizers' foresight in obtaining Kashdan to run the Cafe Figaro Open is commendable.)

The tournament had \$1,000 in prizes (first, \$500, second \$300, third \$200) and yet there was no entry fee. Rounds were played daily at 3 P.M. There were six rounds, beginning Monday and ending Saturday. The time limit was 45 moves in the first 1½ hours, then a half-hour for the remainder of the game.

The Cafe Figaro is located at 9010 Melrose Avenue, near Doheny Drive, in West Hollywood. It is reported that owner, Tom Ziegler, hopes to make the Cafe Figaro a metropolitan chess center ala the Chess Center in London, the old Cafe de la Regence in Paris, etc.

CAFE FIGARO OPEN, JUNE 1970

Game No. 1134 - Q.Gambit De

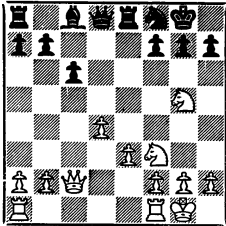
<u>White</u>	<u>Black</u>
W. Addison	T. Weinberger
1. P-QB4	Kt-KB3
2. Kt-QB3	P-K3
3. Kt-B3	P-Q4
4. P-Q4	P-B3
5. PxP	KPxP
6. B-Kt5	B-K2
7. Q-B2	00

Better is 7...P-KKt3 and 8...B-KB4.

8. P-K3	R-K1
9. B-Q3	QKt-Q2
10. 0-0	Kt-K5?

An old lemon which should lose a clear pawn and the game, 10...Kt-B1 is an oldie but goodie.

11. BxRt	PxB
12. KtxP	BxB
13. QKtxB	Kt-B1



14. KR-K1

I would have played 14.Kt-K4, B-B4; 15. Kt3-Q2, Q-K2; 16. P-B3, B-Kt3; 17. QR-K1 with a certain win. What Addison plans with the KR is not clear as the K file is useless, P-K4 being out of the question.

14. ... Q-K2!

15. Q-QB5

Another lemon, but if for instance 15. QR-B1, P-KR3; 16. Kt-R3, BxKt; 17. PxB, Q-K3, Weinberger is at his

trappy best here. 15. KR-B1 or even 15. Kt-R3 are best but Black stands well in all cases here.

15. ... QxQ

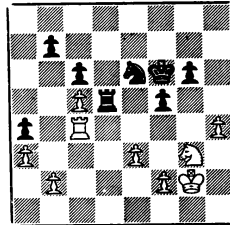
White now has nothing!

16. PxQ	P-B3!
17. Kt-R3	BxKt
18. PxB	Kt-K3!
19. QR-B1	

Hoping for a miracle.

19. ...	KR-Q1
20. R-B4	R-Q4
21. R1-QB1	R1-Q1
22. K-Kt2	K-B2
23. P-KR4	R1-Q2
24. R1-B2	P-KKt3
25. Kt-Kt1	R-Q7
26. Kt-K2	RxR
27. RxR	P-QR4!
28. P-QR3	R-R5
29. Kt-Kt3	P-B4
30. P-R5	K-B3
31. PxB	PxP
32. P-R4	R-Q4
33. R-B4!	

Addison sets up a fantastic cheapo.



33. ... KtxP

34. P-K4

In this position pandemonium broke loose: Addison screamed for witnesses that Weinberger touched Black's KBP after removing White's KP from the board. \$500 was at stake. At least 5 witnesses



claimed Weinberger did barely nudge his KBP. Grandmaster Isaac Kashdan, deeply concerned that this incredible situation should wreck this and all projected professional master tourneys, free to any player in the world, was most careful in questioning numerous spectators about the board. Whereupon, Kashdan ruled that Weinberger's 34th move must be

34. ... Pxp??

After 34...KtxP Black actually has the better rook and pawn ending though a draw is likely.

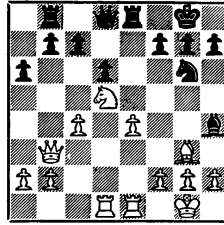
35. RxKt Forfeit.

### GAMES

#### MONTEREY OPEN, JUNE 1970

##### Game No. 1135 - Ruy

White	Black
<u>J. Kaplan</u>	<u>D. Blohm</u>
1. P-K4	P-K4
2. Kt-KB3	Kt-QB3
3. B-Kt5	Kt-B3
4. O-O	P-Q3
5. P-Q4	B-Q2
6. Kt-B3	B-K2
7. R-K1	PxP
8. KtxP	KtxKt
9. QxKt	BxB
10. KtxB	O-O
11. B-B4	P-QR3
12. Kt-B3	Kt-Q2
13. Kt-Q5	B-B3
14. Q-Kt4	R-Kt1
15. QR-Q1	R-K1
16. B-Kt3	Kt-K4
17. P-QB3	Kt-Kt3
18. Q-B4	R-QB1
19. Q-Kt3	R-Kt1
20. P-QB4	B-R5



- |              |         |
|--------------|---------|
| 21. P-B5     | BxB     |
| 22. QxB      | R-K3    |
| 23. P-B4     | Kt-K2   |
| 24. P-B5     | R-K4    |
| 25. P-KB6    | Kt-Kt3  |
| 26. Kt-K7 ch | K-B1    |
| 27. PxQP     | PxQP    |
| 28. Kt-B5    | Q-Kt3ch |
| 29. K-R1     | PxP     |
| 30. RxP      | Q-Kt5   |
| 31. P-QR3    | Q-B5    |
| 32. Q-K3     | R-B1    |
| 33. RxP      | RxP     |
| 34. Q-R6ch   | K-K1    |
| 35. RxRch    | Resigns |

#### MECHANICS' INSTITUTE, 1969

##### Game No. 1136 - QP Counter Gambit

White	Black
<u>J. Grefe</u>	<u>R. Burger</u>

(Notes by Bob Burger)

- |           |      |
|-----------|------|
| 1. P-K4   | P-K4 |
| 2. Kt-KB3 | P-Q4 |

A last minute decision based on the fact that Grefe out-played me easily in a Ruy Lopez at the California Open.

3. PxP

Also 3. KtxP, B-Q3; (Botvinnik) 4. P-Q4, PxP; 5. B-QB4, BxKt; 6. Q-R5 is good for White.

3. ... P-K5

Black could try 3...QxP; 4. Kt-QB3,

Q-QR4 or, gambit-style, 3...B-Q3;

4. P-Q4, F-K5.

4. Q-K2 Kt-KB3

5. Kt-QB3

Theoretically, 5. P-Q3 followed by Kkt-Q2 is best.

5. ... B-K2

6. KtxP 0-0

7. KtxKtch BxKt

8. Q-Q1 R-Klch

9. B-K2 Q-K2

Objectively, 9...QxP gives better prospects, a pawn down with an open game.

10. P-Q4 B-B4

11. P-QR3?

White could now try to hold both pawns with 11.P-B3, since ...Kt-Q?

is answered easily by 12. B-K3, Kt-Kt3; 13. P-B4. Black would have

played 11. P-B3, B-K5; 12. 0-0, BxP; 13. B-Q3, Kt-B3; 14. B-KB4.

11. ... B-K5

12. 0-0 BxP

13. B-K3 Kt-B3

14. P-B3

If White is to make his pawn count, he should be prepared to play more aggressively. Now Black has adequate play on the Queenside.

14. ... P-KR3?

15. P-R3?

Black's Knight must be kept out by P-Qkt4.

15. ... Kt-QR4

Of course, it should have been played on the 14th move.

16. Kt-Q2 B-Kt4

17. BxB QxB(K7)

18. B-K3??

An unfortunate oversight. 18. B-B4 still preserves winning chances.

18. ... RxB

Resigns.

Game No. 1137 - French Def.

White

Black

J. Acers

G. Kane

1. P-K4

P-K3

2. P-Q4

P-Q4

3. Kt-QB3

B-Kt5

4. P-K5

Kt-K2

4...P-QB4 is better.

5. B-Q2

This variation was prepared for over a year as a result of some analysis by California Expert

Peter Grey in the March-April

1968 issue of the California Chess Reporter. The critical question in

theory is the variation 5...P-QB4;

6. Kt-B3, QKt-B3; 7. B-Q3, PxB!;

8. Kt-Qkt5, B-B4! In my opinion this is the only way to combat

White's efforts to build a center

bind and control d6. The illustrative game Grey-Ulrich is full

of ideas: 5...P-QB4; 6. Kt-B3, QKt-B3; 7. B-Q3, 0-0?; 8. P-B3, B-R4;

9. B-Q3 (not 9.PxB, Kt-Kt3; 10. Q-K2, B-B2; 11. Kt-Q6, P-Kt3; 12. P-Qkt4, PxB; 13. PxB, P-B3 --Grey)

9. ...PxB; 10. BxPch, KxB; 11. Kt-Kt5ch, K-Kt3; 12. P-KR4 (12. Q-Kt4?

KtxP), PxB; 13. P-R5ch, K-R3 and here Grey could have won with 14. PxB! instead of 14. KtxBP?; db1ch

as played. White's center pawns must be attacked immediately according to Grey. Home analysis

convinced me of this. My opponents 4th, 5th, 7th and 9th moves are

all wastes of time.

5. ...

0-0?

Loses by force. After the game I discovered that I had worked the

winning line out to White's 13th move in home analysis. Correct

is transposition into note above with 5... P-QB4; 6. Kt-B3, QKt-B3

etc. with a good game.

6. Kt-B3 P-QB4  
Not an effective undermining of White's center bind. If 6...P-KB4; 7. P-QR3 (or Q-K2) with a King side attack by 0-0-0, QR-KKt1, P-KKt4, etc.

7. B-Q3 P-B3  
8. P-KR4 Q-K1  
9. Kt-QKt5

The crusher, I already visualized the game continuation to move 20.

9. ... BxBch  
10. QxB

I considered 10. KxB?! for half an hour, but after 10...P-B5; 11.Kt-Q6, Q-R4!; 12. P-KKt4, QxKtP; 13. BxPch, K-R1 (not 13...KxB; 14. Kt-Kt5ch, PxKt; 15. QxQ) White loses. For instance 14. R-Kt1, Q-R4 winning a piece. Other variations are no better.

10. ... P-B5  
11. Kt-Q6 Q-B3

Of course avoids 11...Q-R4; 12. B-K2 winning.

12. ExFch!

A pretty two-piece sacrifice which is absolutely sound.

12. ... KxB  
13. Kt-Rt5ch K-Kt1

If 13...FxB; 14. PxBch and (1) 14...K-Kt3; 15. Q-K2 (2) 14...K-Kt1; 15. Q-K2, P-KKt3; 16. Q-Kt4 etc.

14. Q-K2 Kt-R4!

Very fine. I analyzed this position quickly and I did not understand the idea Kane had in mind.

15. KtxKt, KPxB; 16. Q-R5, PxKt; 17. RxB, R-K1; 18. P-Kt6, K-B1; 19. Q-Kt5 and (1) 19...K-Kt1; 20. 0-0-0, R-K3; 21. R-R5, RxB; 22. Q-Q8ch, K-B2; 23. R-R8 winning; or (2) 19...B-K3; 20. 0-0-0 (forced, if 20. R-R8ch, B-Kt1; 21. QxPch, Q-B3 wins.) 20...Kt-Q2; 21.

R-R8ch, B-Kt1; 22. QxPch and now (a) 22...K-K2; 23.RxB, RxB; 24. Q-B7ch winning; (b) 22...Kt-B3; 23. R(1)-R1 etc. with a murderous attack.

15. KtxKt?

I played moves 13-15 quickly, unaware that a flaw exists in my line. Steve Brandwein pointed out a simple conclusion to the combination: 15. Q-R5!, Kt-R3; 16. Q-Kt6, PxKt; 17. PxB with the threat of 18. RxB; 19. 0-0-0 and 20. R-R8ch with mate in two.

15. ... KPxB  
16. Q-R5 PxKt  
17. PxB R-K1  
18. P-Kt6 K-B1  
19. Q-Kt5 B-K3

If 19...K-Kt; 20. 0-0-0 wins.  
20. 0-0-0 B-Kt1!

A nasty shock. I expected 20...Kt-Q2; 21. R-R8ch, B-Kt1; 22. QxPch winning. Kane's problem-like resource is an interesting example of moving an already developed piece rather than bringing another to "aid" the defense.

21. R-R8 Q-K3!  
22. R(1)-R1 Kt-B3  
23. R(1)-R7 KtxKP!  
24. PxB

If 24. RxB, Kt-Q6ch; 25. PxKt, Q-K8ch forcing mate. Now I decided to prepare a swindle before resigning.

24. ... QxKF  
25. R-R1 Q-B3??

If 25... Q-K2; 26. RxBch, KxB; 27. R-R8ch, KxB; 28. Q-R5ch, K-Kt1; 29. Q-R7ch, K-B1; 30. Q-R8 mate. A recurring theme. But Black should win with 25...R-QB1-B3 (Brandwein) or 25. P QRt4-Kt5 (Acers).

26. QxQch PxQ  
27. R(1)-R7

Threatens mate in one, if 27...R(K)  
 -Q1 White mates in two.  
 27. ... R-K2  
 28. RxBch KxR  
 29. RxR P-Q5  
 30. RxP RESIGNS  
 30...R-K1; 31. K-Q2; P-QR4; 32. R-  
 KB7, R-KB1; 33. RxRch, KxR; 34. P-  
 QKt3. A theoretically important  
 game; a great fight despite blunders;  
 the most interesting game I have ex-  
 amined in years.

ERNEST SHIELDS OPEN, 1970

Game No. 1138 - English

White	Black
<u>L. Christiansen</u>	<u>R. Martin</u>
1. P-Q84	Kt-KB3
2. P-KKt3	P-KKt3
3. E-Kt2	B-Kt2
4. Kt-QB3	O-O
5. Kt-B3	P-Q4
6. PxP	KtxP
7. O-O	P-QB4
8. Q-Kt3	Kt-Kt3
9. P-Q3	B-K3
10. Q-Kt5	Kt-R3
11. Kt-Kt5	B-Q2
12. Q-R5	R-Kt
13. B-K3	Kt-R5
14. QxQ	KRxQ
15. KtxKt	BxKt
16. QR-B1	P-Kt3
17. P-Kt3	B-K
18. P-B4	Kt-Kt5
19. P-QR3	Kt-R7
20. R-B2	Kt-B6
21. Kt-B3	P-QR4
22. Kt-K5	Kt-Q4
23. B-Q2	P-R5
24. P-Kt4	P-B3
25. Kt-B4	PxP
26. BxKt ch	RxB
27. BxP	R-Q2
28. KR-B1	K-B2
29. Kt-Q2	P-K3

30. Kt-K4	K-Kt
31. R-B8	R-Q
32. RxRQ	RxR
33. B-K7	R-Q2
34. BxP	K-B2
35. BxBch	KxB
36. Kt-Kt5	R-K2
37. R-B7	RxR
38. KtxPch	K-B3
39. KtxR	B-B3
40. Kt-R6	K-K3
41. Kt-Kt4	K-Q3
42. K-B2	K-B4
43. KtxB	KxKt
44. K-K3	P-QKt4
45. K-Q2	Resigns

Game No. 1139 - Sicilian

White	Black
<u>D. Carrasco</u>	<u>R. Flacco</u>
1. P-K4	P-QB4
2. Kt-KB3	P-Q3
3. P-Q4	PxP
4. KtxP	Kt-KB3
5. Kt-QB3	P-QR3
6. B-K3	P-K4
7. Kt-Kt3	B-K2
8. P-KR3	O-O
9. P-Kt4	P-QKt4
10. Kt-Q5	QKt-Q2
11. KtxB	QxKt
12. B-Q3	B-Kt2
13. Q-B3	P-Q4
14. Kt-Q2	PxP
15. KtxP	KtxKt
16. BxKt	Q-Kt5 ch
	Resigns

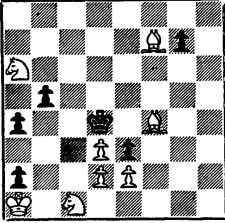
Game No. 1140 - Queens Gambit

White	Black
<u>D. Berry</u>	<u>W. Addison</u>
1. P-Q4	P-Q4
2. P-QB4	P-QB3
3. Kt-QB3	Kt-KB3
4. B-Kt5	Kt-K5
5. KtxKt	PxKt
6. P-B3	B-B4
7. PxP	BxP
8. P-K3	Q-R4ch
	Resigns

No. 299

V. Savchenko  
1968

U.S.S.R. Championship

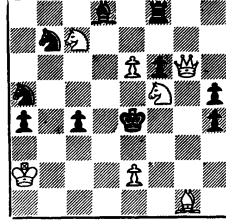


Mate in 6

No. 300

V. Golyubik  
1968

U.S.S.R. Championship



Mate in 4

In England and in Russia there is a tradition of "national championships" of composing, conducted by the simple device of bringing together the best problems from each of several tourneys. The above two problems were seventh and first, respectively, in the most recent Soviet championship for "more-movers".

I place the six-mover first because it is chronologically and artistically an "earlier" problem. Sam Loyd would have traded a pair of his best three-movers for it. It's well worth spending the time to solve.

Golyubik's four-mover is an amazing example of the more modern theme of self-blocks at a distance from the King. It will be noticed that checks from the battery in the initial setting allow the King to flee successfully. The key is the most innocuous-looking move on the board. Work it out!