

Berkeley's Walter Browne is New US Chess Champion

By ALAN BENSON

International Grand Master Walter Shawn Browne won the 1974 U.S. Chess Championship, played at the La Salle Hotel, Chicago, Illinois, July 12-August 1, 1974. He outdistanced his nearest rivals by an incredible one and one half points! The single round robin involved 14 of the top 27 players in the country (5 Grandmasters, 3 International Masters) competing for \$8,500 in prizes by the United States Chess Federation and the American Chess Foundation.

Complete Results were: 1st Walter Browne (2554) Berkeley, 9½-3½ (\$2,250); 2nd-3rd Pal Benko (2515) Jersey City NJ and Larry Evans (2513) Reno NV, 8-5 (\$1,425 each); 4th Anthony Saïdy (2430) Santa Monica, 7½-5½ (\$800); 5th-8th John Grefe (2506), Berkeley, Ken Rogoff (2490), NY Arthur Bisguier (2464), Rock Hill NY, and Samuel Reshevsky (2542) Spring Valley NY, 7-6 (\$422.50 each); 9th Norman Weinstein (2471) Allston MA 6-7 (\$200); 10th-11th Andy Soltis (2443) New York NY and Benard Zuckerman (2427) New York NY 5½-7½ (\$167.50 each); 12th Kim Commons (2430) Los Angeles 5-8 (\$150); 13th Andrew Karklins (2424) Chicago Ill., 4½-8½ (\$125); 14th Larry Gilden (2409) Takoma Park MD,

3½-9½ (\$100).

The most brilliant game of the tournament came in the 9th round, July 25 between Browne and Bisguier. Over the board Walter Browne found a move overlooked by Grand Masters and theoreticians for over 40 years. Look at the diagram and see if you can guess what Browne's 14th move is.

White: Walter Browne

Black: Arthur Bisguier
Petroff's Defense

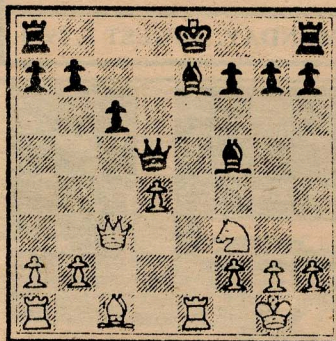
- | | |
|----------|-------|
| 1 P-K4 | P-K4 |
| 2 N-KB3 | N-KB3 |
| 3 N x P | P-Q3 |
| 4 N-KB3 | N x P |
| 5 P-Q4 | P-Q4 |
| 6 B-Q3 | B-K2 |
| 7 O-O | N-QB3 |
| 8 P-B4 | N-N5 |
| 9 P x P | N x B |
| 10 Q x N | Q x P |
| 11 R-K1 | B-KB4 |
| 12 N-B3 | |

According to Keres, White stands a bit better after 12 N-K5 P-KB3 13 Q-B3

- | | |
|----------|-------|
| 12. . . | N x N |
| 13 Q x N | P-QB3 |

(See diagram)

In the game Yates vs Kashdan (Hastings 1931-32) continued 14 B-Q2 P-KR3 (Fine gives 14 . . . B-K3 15 R-



K5 Q-B5 16 Q-K3 Q-B7! as equal) 15 R-K5 Q-Q2 16 QR-K1 B-K3 and now 17 P-Q5 P x P 18 R x B P x R 19 Q x P wins according to Sharp, but after 19 . . . O-O-O the situation remains unclear. Fine also cites 14 R-K5 Q-Q2 15 P-Q5 O-O (Another uncertain line runs 15 . . . P x P 16 R x B ch Q x R 17 Q x P) 16 P x P P x P with equality.

14 B-R6!!

I talked with Walter right after the game and he told me that Reshevsky's eyes literally popped out of their sockets when he saw this move. Accepting the piece 14 . . . P x B loses to 15 R-K5 Q-Q2 16 QR-K1 B-K3 17 P-Q5 P x P 18 R x B P x R 19 Q x R ch

B-B1 20 Q-B6 while declining with 14 . . . B-K5 fails to 15 B x P R-KN1 16 R x B Q x R 17 R-K1 Q-N3 (If 17 . . . Q x R ch 18 Q x Q R x B 19 Q-K5 followed by penetration on the queenside with 20 Q-B7) 18 Q-N4 O-O-O 19 R x B Q-N8 ch 20 N-K1 R-Q2 21 R x R K x R 22 Q x P ch.

14. . . R-KN1

Having spent 45 minutes calculating the above variations, Bisguier plays the only move.

- | | |
|----------|------|
| 15 R-K5 | Q-Q2 |
| 16 QR-K1 | B-K3 |
| 17 N-N5! | |

If Bisguier didn't need shock treatment after Browne's 14th move he certainly needs it now!

17. . . O-O-O

Considering 17 . . . P x B 18 N x B P x N 19 R x P R-N2 20 P-Q5 K-B1 21 Q x R ch! or 17 . . . B x N 18 B x B P-KR3 19 B-R4 P-KN4 20 B-N3 O-O-O 21 P-Q5! B x P 22 Q-K5. Bisguier decides that it's time to leave the center now!

18 N x BP!

Much better than 18 N x B P x N 19 R x P B-B3 with pressure on the Queen's pawn

- | | |
|----------|-------|
| 18. . . | B x N |
| 19 R x B | Q x P |
| 20 R x B | Q x Q |
| 21 P x Q | P x B |

Finally!

22 R-N1!

The combination now over, Browne proceeds to win the game with fine endgame technique. But it's very fast technique with three minutes left on Browne's clock.

- | | |
|----------|------|
| 22. . . | R-N4 |
| 23 P-KR4 | |

Precise play! Bisguier would retain undeserved counter chances after 23 R(7) x NP R-N4 24 R(7) x R P x R.

- | | |
|-----------|---------|
| 23. . . | R-N4 |
| 24 R x R | P x R |
| 25 R x RP | R-Q8 ch |
| 26 K-R2 | R-Q7 |
| 27 R x RP | R x RP |
| 28 P-R5! | |

Closing to within three squares of queening the Rook's pawn is well worth the King's bishop pawn.

- | | |
|------------|-------|
| 28. . . | R x P |
| 29 R-R8 ch | K-B2 |
| 30 P-R6 | K-N3 |

Avoiding the future possibility of R-QB8 ch K x R and P-R8=Q.

- | | |
|----------|-------|
| 31 K-R3 | P-R4 |
| 32 P-N4 | P-N5 |
| 33 P x P | P x P |
| 34 R-K8! | |

Timely defense, ready to answer 34 . . . P-N6 35 R-K3 P-N7 36 R-N3 ch followed by advancing the Kingside pawn.

- | | |
|-----------|----------|
| 34. . . | R-B8 |
| 35 K-N2 | R-B2 |
| 36 P-N5 | R-B4 |
| 37 P-R7 | R x P ch |
| 38 K-B3 | R-KR4 |
| 39 P-R8=Q | R x Q |
| 40 R x R | |

Browne's flag is tetering but has not fallen, Bisguier resigns with time control over.

INDEPENDENT BERKELEY STUDENT PUBLISHING COMPANY, INC. Copyright, 1974

Publication Office:
2490 Channing Way,
Suite 300

Berkeley, California, 94704

Telephones:

Editorial: 548-8300

Display Advertising:
548-8080

Classified Advertising:
48-8405

President: Steve Mott
Business Manager:
Ed Cassidy

This publication is not an official publication of the University of California, but is published by an independent corporation using the name "The Daily Californian" pursuant to a license granted by the Regents of the University of California.

Advertisements appearing in The Daily Californian reflect the views of the advertisers only. They are not an expression of editorial opinion or of the views of the staff.