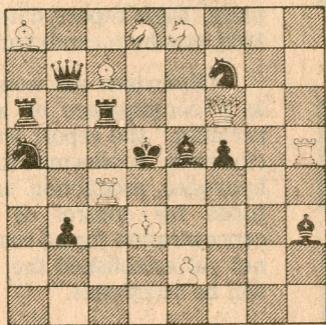


Chess

By George Koltanowski

PROBLEM

By A. Gurevitch, Israel



White to play and mate in two moves.



California State at Hayward hosted a Mexican touring chess group in April this year. The match, organized by Greg Humphrey, against a team from the Instituto Politecnico Nacional of Mexico City, ended in a lopsided victory for the home team of 29½-4½. The visitors did win on the two topboards. Here's the game played on Board One.

White: Alfonso Ferriz, Mexico (2250).
Black: Leonid Stolyarov (2375).

1.P-K4	P-K4	24.R-R3	QxR
2.N-KB3	N-QB3	25.PxQ	N-K4
3.B-N5	P-KN3	26.K-R1	RxP
4.O-O	B-N2	27.Q-B1	R-R4
5.P-B3	P-Q3	28.Q-N2	P-B3
6.P-Q4	B-Q2	29.R-KN1	R-N4
7.R-K1	N1-K2	30.Q-K4	K-K2
8.N-R3	O-O	31.RxR	PxR
9.B-N5	P-KR3	32.Q-QN4	P-N3
10.BxNQB6	BxB	33.K-N2	R-KB1
11.B-R4	PxP	34.Q-QR4	RxP
12.NxP	B-Q2	35.QxRPch	N-Q2
13.P-KB4	P-KN4	36.Q-R8	P-B4
14.PxP	N-N3	37.Q-R8	R-K4
15.PxP	QxB	38.K-B3	P-B5
16.PxB	KxP	39.P-KR4	P-N5ch
17.N-B5ch	BxN	40.KxP	N-B3ch
18.PxB	N-K4	41.K-B3	R-QN4
19.Q-Q4	Q-R4	42.Q-QB8	R-QB5
20.N-B4	P-KB3	43.Q-N7ch	N-Q2
21.R-K3	R-R1	44.K-N4	K-K3
22.Q-B4	NxN	45.Q-K4ch	Resigns
23.R-N3ch	K-B1		

The advance of the free pawn will decide the game — a tough game for Black to lose.

SOLUTION to Problem: 1.B-Q6.