

The Team Tournament was reduced to very small dimensions in comparison with what was originally expected. There were only 4 teams competing, Mexico winning with a score of $8\frac{1}{2}$ to California's $7\frac{1}{2}$.

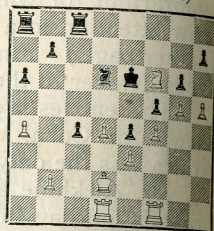
The first game to hand from this congress is one in which the World Champion, after some anxious moments, succeeded in defeating J. J. Araiza, champion of Mexico. The game is as follows:—

GAME No. 6,885.—*Queen's Pawn*. White: J. J. ARAIZA.
Black: A. ALEKHINE.

- | | | | |
|-------------|-----------|--------------|------------|
| 1 P—Q 4 | Kt—K B 3 | 22 P—K Kt 4 | P—K Kt 3 |
| 2 Kt—K B 3 | P—Q 4 | 23 Q R—Q 1 | K—Q 2 |
| 3 P—K 3 | P—B 4 | 24 P—R 3 | K—B 3 |
| 4 P—B 3 | Kt—B 3 | 25 P—Q R 4 | K—Q 2 |
| 5 B—Q 3 | B—Kt 5 | 26 P—Kt 5 | P—Q R 3 |
| 6 P—K R 3 | B × Kt | 27 Kt—B 3 | B—Q 1 |
| 7 Q × B | P—B 5 | 28 P—R 4 | Kt—Q 3 |
| 8 B—B 2 | P—K 4 | 29 P—K R 5 | B—R 4 |
| 9 P × P | Kt × P | 30 Kt—Q 5 | K—K 3 |
| 10 B—R 4 ch | K—K 2 | 31 Kt—B 6 | B × B |
| 11 Q—Q 1 | Kt—Q 6 ch | 32 K × B | P—Kt 4 |
| 12 K—K 2 | Kt—B 5 | | |
| 13 R—B 1 | P—B 4 | 33 P—Q 5 ch | K—K 2 |
| 14 B—B 2 | Kt—K 4 | 34 Kt × R P | Q Kt P × P |
| 15 P—B 4 | Kt—B 2 | 35 P × P | Q R—Kt 1 |
| 16 B × Kt | Q P × B | 36 Kt—B 6 | P—B 6 ch |
| 17 Q—Q 4 | Q × Q | 37 K—K 1 | P × P |
| 18 B P × Q | K—K 3 | 38 R—K R 1 | P—Kt 8 (Q) |
| 19 Kt—B 3 | B—Kt 5 | 39 R—R 7 ch | Kt—B 2 |
| 20 Kt—Kt 5 | K R—Q B 1 | 40 R × Kt ch | K—Q 3 |
| 21 B—Q 2 | B—K 2 | 41 R—Q 7 ch | K—B 4 |

(See Diagram)

Position after 32 K × B.
BLACK (ALEKHINE)



WHITE (ARAIZA)

- | | |
|------------|----------|
| 42 R × Q | R × R ch |
| 43 K—B 2 | P—R 6 |
| 44 R—Q R 7 | K—Kt 3 |
- and White resigned.

A decidedly adventurous opening. Araiza apparently aimed at getting one of the Colle variations, but Alekhine gave the game quite a different twist.