

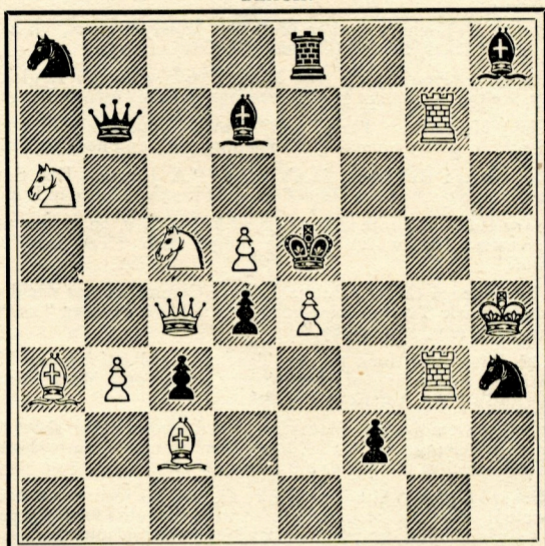
# THE CHESS-PLAYER.

[All communications for this department should be addressed to "Chess Editor Argonaut, 213 Dupont Street, San Francisco, Cal."]

**Problem No. 114.—By F. B. Phelps, Sandwich, Ill.**  
*Composed for the Argonaut.*

**WHITE**—King at K5; Rooks at QR4, QKt8; Bishop at QB sq; Knights at KB6, QB7; Pawn at QR3.  
**BLACK**—King at QB4; Bishop at K sq; Knights at Q8, KKt2; Pawns at K3, KB4, QB3, QKt3, QR4.  
White to play and mate in two moves.

**Problem No. 115.—By John Gardner, Utica, N. Y.**  
*Composed for the Argonaut.*  
**BLACK.**



**WHITE.**  
White to play and mate in three moves.

### Solutions of Problems.

- No. C— 1—B QKt5  
No. CI— 1—Q KR3 1—Q x Kt (a, b)  
2—P B8 (knights) 2—R x Kt  
3—Kt x KtP mates.  
(a) 1— 1—Q x Q (b) 1— 1—Q x P  
2—Kt KB8 2—Any move 2—P B8 (qns) 2—R x P or any  
3—Kt x KtP mates. 3—Kt x P or Q x KP mates.  
No. CII— 1—R Kt7  
No. CIII— 1—B Kt 4 1—K Q5 (a, b)  
2—R Q6 ch 2—K K4 or Kt x R  
3—Kt mates.  
(a) 1— 1—P Q6 (b) 1— 1—B x P  
2—R Q6 2—Kt x R or any 2—R K6 ch 2—Any move  
3—B or Kt mates. 3—Kt B6 mates.

Correct solutions received: Problems Nos. C, CI, CXI, from U. Hartnell, Salinas City.  
Note: In Problem No. CXIII, Black Pawn at K2 should be *White*.

### Answers to Correspondents.

U. H.—I cry, "Peccavi." Hope you received my postal. All solutions have been acknowledged. Will hereafter comply with request regarding incorrect problems.  
F. B. Phelps—Have complied with your request.  
H. H.—See note correcting Problem CXIII.  
H. and E. Bettmann.—One of our solvers finds a cook to No. CXII—viz., Q R3. Will you correct the position?

### Game No. 60.

Played between Messrs. Simonson and Delmar in the Tournament of the Manhattan Chess Club. Score and notes from *Brooklyn Chess Chronicle*:

#### IRREGULAR OPENING.

White.	Black.	White.	Black.
Simonson.	Delmar.	17—Q B2	17—QR R sq
1—P QB4	1—P KB4	18—B QB sq	18—Kt K5
2—P Q4	2—Kt KB3	19—B x Kt	19—BP x B
3—Kt QB3	3—P K3	20—Q Kt3	20—R R5
4—P K3	4—B Kt5	21—R B2	21—Kt x Kt
5—B Q3	5—P Q4	22—BP x Kt	22—Q R4
6—Kt B3	6—Castles	23—P R3	23—R B5
7—Q Kt3	7—B x Kt ch	24—Q Q sq (c)	24—Q x BP
8—P x B	8—P QKt3	25—Q KR5	25—R KB sq
9—B R3	9—R K sq	26—R x R ch	26—K x R
10—Kt K5	10—B Kt2 (a)	27—B Q2 (d)	27—Q x RP (e)
11—P QB5 (b)	11—P QB3	28—R B sq ch	28—K K2
12—P KB4	12—Q Kt Q2	29—R B7 ch	29—K Q sq
13—Castles KR	13—Q B2	30—Q x RP	30—Q K2
14—QR Kt sq	14—R Kt sq	31—B R5 ch	31—K K sq
15—P x P	15—P x P	32—Q Kt8 ch	Black resigns
16—P KR3	16—P QKt4		

- (a) Mr. Delmar has not shown his usual skill in the management of the opening. His position is cramped, and his pieces difficult to bring into effective action.  
(b) An excellent move.  
(c) Very finely conceived. White sacrifices a Pawn for the purpose of massing his forces and carrying the Black King's entrenchments by storm.  
(d) A quiet and decisive stroke of play.  
(e) Taking the Bishop is equally disastrous, *e. g.*:

28—R KB sq ch | 27—Q x B  
29—R B7 ch | 28—K K2  
30—Q Kt5 ch, and mates in a few moves. | 29—K Q sq

Mr. K. D. Peterson, chess editor of *Mirror of American Sports*, announces the completion of the group picture referred to in this column some weeks ago. The picture includes thirty-one chess editors, among them such well-known chessists as J. G. Belden, Miron J. Hazeltine, William Steinitz, Captain George H. Mackenzie, A. G. Sellman, G. Reichhelm, C. E. Dennis, J. W. Miller, A. F. Mackenzie, and others of no less importance in the chess world. The price of the picture will be seventy-five cents, and copies can be obtained by ordering through us or sending direct to Mr. Peterson, P. O. Box 332, Milwaukee, Wis.

What has become of the American Chess Editors' Association, a ticket for which was proposed by T. P. Bull, Detroit *Free Press*? The suggestion for such an association seems to us an excellent one, and we hope our conferees will take an interest in the movement, and see that it is fairly inaugurated. What say you, brother Bull, to a personal address?