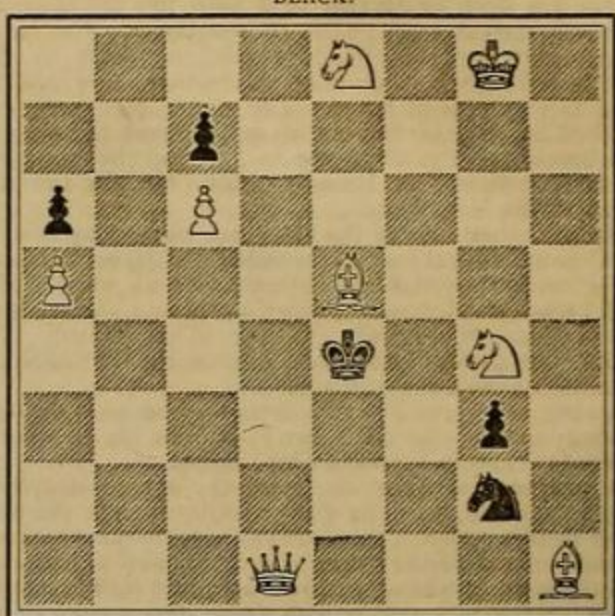


# THE CHESS-PLAYER.

[All communications for this department should be addressed to "Chess Editor Argonaut, 213 Dupont Street, San Francisco, Cal."]

Problem No. LXXXVII.—By G. W. M. Feist, Croydon.  
**WHITE**—King at Q2; Queen at KKt sq; Rook at QKt7; Bishop at KR2; Pawn at QKt3.  
**BLACK**—King at Q4.  
 White to play and mate in two moves.

Problem No. LXXXVIII.—By E. Pradignat.  
**BLACK.**



**WHITE.**  
 White to play and mate in three moves.

Solution of Problem No. LXXIX.  
 1—B Kt3                      1—R x B  
 2—Q R8 mate.

Solution of Problem No. LXXX.  
 1—R QB4                    1—K x P (a, b)  
 2—Q K8                      2—K x R  
 3—Q QB6 mate.

(a) 1—	1—K B3	(b) 1—	1—Kt K5
2—R B4 ch	2—KK4 or Kt3	2—Kt Q3 ch	2—KxP or KB3
3—Q mates.		3—Q mates.	

Correct solutions received as follows: Problems LXXVIII, LXXXI, LXXXIII, from B. M. Parker, Eureka, Cal.; problems LXXXI and LXXXII, from L. T., Marysville, Cal.; problem LXXXIV, from F. W.; problems LXXIX, LXXXI, LXXXII, from D. Wood, Placerville; problems LXXX, LXXXI, LXXXIII, from R. R. Patton, Sacramento; problems LXXXI and LXXXII, from William Zukendorf, Tucson, A. T.; problems LXXXIII, LXXXIV, LXXXV, and LXXXVI, from U. Hartnell, Salinas City.

### Answers to Correspondents.

W. Z., Tucson, A. T.—Solutions can be acknowledged without using full name. A correspondence game can be arranged without difficulty whenever you are prepared.

L. T., Marysville, Cal.—Much obliged for the compliment. Solutions acknowledged.

F. W.—The variations should always be given in full. The moves are not always apparent.

D. W., Placerville—The White Pawn in LXXX is at Q B3. In LXXXIII, if 1—R x Kt, Black plays R KB5, interposing if Kt moves, dis ch. Try again. Problem LXXXIV is sound, and will repay you for your trouble when solved. Variations should be given to all three-movers.

R. R. P., Sacramento—In LXXIX, if Q x BP, then P x Q, and no mate in two. In LXXXIV, if K Kt4, then P B4 ch., and mate can not be given in three.

### Game No. 55.

Played between Messrs. Fedden and Pollock, at the recent Counties Chess Association meeting at Bath, England. Game and notes from the *London Field*:

#### SCOTCH OPENING.

White.	Black.	White.	Black.
Fedden.	Pollock.	19—R B3	19—B Kt5 (e)
1—P K4	1—P K4	20—R Kt3	20—B R5
2—Kt KB3	2—Kt QB3	21—P KR3	21—B x R
3—P Q4	3—P x P	22—Q x B	22—B Q2
4—Kt x P	4—Kt x Kt	23—B B3	23—R B2
5—Q x Kt	5—Kt K2	24—P QKt4 (f)	24—B B4 (g)
6—B QB4	6—Kt B3	25—P Kt5	25—Q Kt3 (h)
7—Q Q5	7—Q B3	26—Q x Q	26—B x Q
8—Castles	8—P Q3 (a)	27—P x Kt	27—P x P
9—B QKt5 <sup>1</sup>	9—B Q2	28—P B5	28—R x P (i)
10—Kt B3	10—B K2	29—Kt x P	29—QR KB sq
11—Q Q3	11—B Q sq (b)	30—R K7	30—B B2
12—Kt Q5	12—Q R5	31—Kt K6	31—P Q4
13—P KB4	13—Castles	32—Kt x KR	32—P x B
14—B Q2	14—P KB4	33—R x P	33—K Kt sq
15—P x P	15—B x P	34—R R8	34—B Q4
16—Q QB3	16—Q R4 (c)	35—Kt K6 disch	35—K B2
17—QR K sq(d)	17—B Q2	36—P Kt4	36—P B4 (j)
18—B B4	18—K R sq	37—R B8 ch (k)	Resigns.

(a) It is questionable whether 8—P QR3 were not safer.  
 (b) Necessary on account of the threatened advance of the adverse Knight. If Black had castled QR he would have been subjected to a severe attack.

(c) This move is not very intelligible, unless Black anticipated White's QR to K sq and intended to attack it with his Bishop. In the meantime, however, he abandons a pawn.

(d) White could play here 17 B x Kt, gaining a pawn. No doubt Mr. Fedden saw it, but he aimed at a more decisive advantage with such a well developed game.

(e) Perhaps 19—B R5 would have been better. If White replies 20 P KKt3, then 20—B B3, etc.

(f) White advanced this pawn to prevent Black checking with Q QB4, so as to enable him to play his Knight.

(g) This move loses the game. Mr. Pollock evidently underrated the threatened danger. Instead of the text move, 24—R K sq ought to have been played.

(h) The Knight has no retreat, and the game might as well be abandoned.

(i) If 28—P x Kt, then 29 B x P, attacking both Rooks here.

(j) If 36—R B6, then 37 Kt Kt5 ch, etc.

(k) The game was played by Mr. Fedden with great ability, and the ending especially presents many points of interest.