

THE CHESS-PLAYER.

[All communications for this department should be addressed to "Chess Editor Argonaut, 213 Dupont Street, San Francisco, Cal."]

Problem No. CX.—By Aurelio Abela.

From La Stratégie.

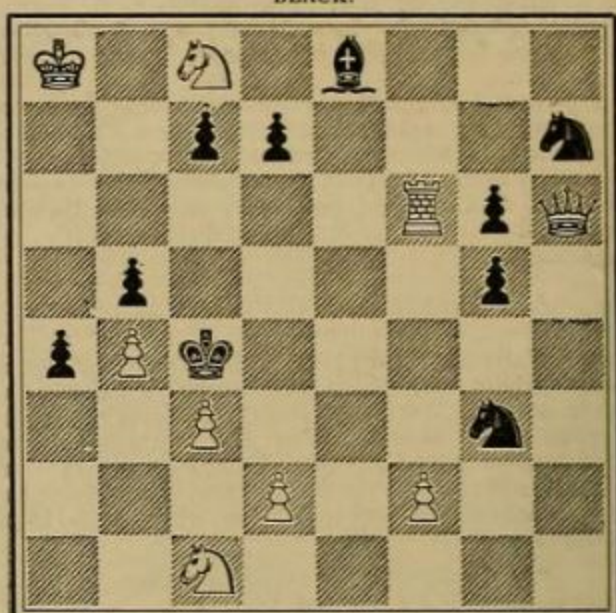
WHITE—King at KR7; Queen at QB2; Rook at QR7; Bishops at QB5, QB8; Knights at Q4, QKt4; Pawns at KKt2, KR4.

BLACK—King at KB3; Queen at QR8; Knights at KKt sq, QB6; Pawns at K4, K5, KB2, KKt6, QKt7.

White to play and mate in two moves.

Problem No. CXI.—By Fr. Dubbe, Rostock.

BLACK.



WHITE.

White to play and mate in three moves.

Solutions of Problems.

- No. LXXXV.— 1—Q KKt8 1—Any move
2—Q or Kt mates.
- No. LXXXVI.— 1—B KB5 1—K B5 (a, b)
2—Q K3 ch 2—K x Q
3—Kt Q5 mates.
- (a) 1— 1—Kt B2 | (b) 1— 1—Kt x B
2—R K2 ch 2—Any move | 2—Kt Kt6 ch 2—K K3
3—Q or Kt mates. | 3—Q Q7 mates.
- No. LXXXVII.— 1—Q KB sq 1—Any move
2—Q mates.
- No. LXXXVIII.— 1—Kt K3 1—K x Kt (a)
2—Kt KB6 2—Any move
3—Kt KKt4 mates.
(a) 1— 1—K x B
2—Q R4 2—Any move
3—Q K4 mates
- No. LXXXIX.— 1—R KB2 1—Any move
2—Q, R or Kt mates
- No. XC.— 1—B R8 1—P Q5 (a, b)
2—Q R5 2—Any move
3—Q mates
(a) 1— 1—K B4 | (b) 1— 1—K B5
2—Q x P ch 2—K moves | 2—Q QB2 ch 2—K moves
3—Q mates | 3—Q mates
- No. XCI.— 1—B KKt5 1—Any move
2—Q mates.
- No. XCII.— 1—Kt Kt3 ch 1—K R5 (a)
2—Q KR2 2—Kt x P
3—B B6 mates.
(a) 1— 1—K R3
2—B K3 2—K Kt3
3—P KB5 mates.
- No. XCIII.— 1—R x BP 1—KB3 (a, b)
2—Q KKt2 ch 2—K Kt4
3—R Kt3 ch 3—K B5
4—Q Kt8 mates.
(a) 1— 1—K x R | (b) 1— 1—B Kt7
2—Kt x B ch 2—K B3 | 2—R x P ch 2—K K5
3—Q QKt2 3—Any move | 3—Q Kt2 ch 3—K Q6
4—Q Kt5 mates. | 4—Q QB2 mates.
- No. XCIV.— 1—B Q3 1—Any move
2—Q, R, B, or Kt mates.
- No. XCV.— 1—R KKt4 1—Any move
2—Q, R, or Kt mates.
- No. XCVI.— 1—Kt Q6 1—Any move
2—R, B, or Kt mates.
- No. XCVII.— 1—Q QB7 1—P B7 (a, b)
2—Q x KtP ch 2—K B5
3—Q Kt3 mates
- (a) 1— 1—P Kt3 | (b) 1— 1—K moves
2—P B4 ch 2—B x P | 2—Q x P ch 2—P Q4
3—Q Jct7 mates. | 3—Q R7 mates.
- No. XCVIII.— 1—Q QKt4 1—Any move
2—Q or Kt mates.
- No. XCIX.— 1—Q K7 1—Kt x Q (a)
2—R QB5 2—Any move
3—B mates.
(a) 1— 1—R x Q
2—Kt fr Kt6 B4 2—Any move
3—Kt mates.

Corrections.

Solution to Problem No. LXXXII should read:

- 1—Q KB8 1—K Q5
2—Kt K4 2—Any move
3—Q or B dis. ch. mates.

In Problem No. C, Black Pawns should be at QB4, Q Kt6

In No. XCIX, pawn at QR4 should be *black*.

In No. CII, add Black Pawn at KR3.