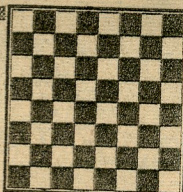


August 11, 1968

chess

by richard shorman



In a 22-board challenge match the LERA team defeated the Oakland Chess Club by the close score of 11½-10½. One of the best games of the match was played on board 2 in the Expert—A Division.

White: Jim Hurt (LERA). Black: Robert Hammie (Oakland). Team Match, Oakland, August 2, 1968.

Sicilian Defense

1 P-K4	P-QB4
2 N-KB3	P-Q3
3 P-Q4	PxP
4 NxP	N-KB3
5 N-QB3	P-QR3
6 B-N5	P-K3
7 P-B4	Q-N3
8 Q-Q2	QxP
9 R-QN1	Q-R6
10 B-K2(a)	B-K2
11 0-0	P-R3(b)
12 B-R4	NxP(c)
13 NxN	BxB
14 R-N3(d)	Q-R5
15 NxPch	K-K2
16 NxNP	B-B3(e)
17 N-N5(f)	PxN
18 Q-Q6ch	K-K1
19 BxPch	QxB
20 RxQ	B-Q2
21 R-QR5(g)	B-K2
22 Q-B7	Resigns

(a) Avoiding the "normal" 10 P-K5, 10 P-B5 or 10 N-N3. On theoretical grounds 10 B-K2 ought to be condemned for its relative passivity, but White's choice of moves is largely psychological. In a previous encounter, won by White, these same players locked horns in the identical opening line. On the premise that Black must be out for revenge this game, armed with the latest published analysis on the "poison Pawn" variation, White decides to innovate before his opponent can spring his surprise.

(b) Black consolidates his position and safeguards his extra Pawn by castling here. His reasoning probably ran, "If 12 BxN BxB, my KB rakes the entire center diagonal and if White retreats his Bishop, then I win another Pawn after 12 . . . NxP!"

(c) Black snatches up more booty only to discover that his King cannot pay the increased taxes. Castling or 12 . . . Q-B4 first keeps the game on a fairly even keel.

(d) The trapper trapped! White has seen further ahead than his opponent, whose King is now stranded fatally in the center.

(e) Meets with a brilliant refutation, but 16 . . . Q-Q2 17Q-N4ch K-K1 18 N-Q6ch K-Q1 19 B-B3 leaves Black busted.

(f) Threatens mate in two among other things.

(g) The finishing touch. If 21. . . RxR, then 22 QxNch K-K2 23 Q-Q6ch and 24 NxR.

★ ★ ★

RAPID TRANSIT TOURNAMENT

The Hayward Chess Club will conduct a rapid transit tourney (ten seconds a move) Monday, Aug. 12, at 8 p.m. Entry fee is only 35 cents. Monthly winner receives a certificate, annual winner a trophy.

WHERE TO PLAY CHESS

The Hayward Chess Club, 2058 D St., (Hayward Arts and Science Center). Monday and Friday, 8-11 p.m.

Cherryland Cafe, 22472 Meekland Ave. (corner of A St. and Meekland Ave.), Hayward. Evenings, 10 p.m. to 6 a.m.