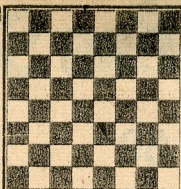


# chess

by richard shorman



## TOURNAMENT RESULTS

The Oakland Chess Club's Fifth Annual Summer Tournament was held at the Oakland Central YMCA, August 24-25. Trophies and book prizes were awarded to the winners in each class.

### Expert-A Division

1. Kon Grivainis, Oakland, 4½-1½.
2. Jim Hurt, Saratoga, 3½-1½.
3. Gary Weber, Alameda, 3½-1½.
4. Jay Spingarn, Sunnyvale, 3-2.

### Class "B"

1. Kim Stocksdale, Berkeley, 3½-1½.
2. Don Hoekman, Novato, 3½-1½.
3. Marc McNown, Walnut Creek, 3-2.
4. Steve Nelson, Alameda, 3-2.

### Class "C"

1. Joe Lara, Sunnyvale, 4-1.
2. Jerry Gerhardt, Alameda, 4-1.
3. Eric Rubsamen, Oakland, 3-2.
4. Myron Johnson, Oakland, 3-2.

★ ★ ★

Garry Wilson, a strong amateur from San Leandro, scored a lone win recently over chess professional and international master George Koltanowski in simultaneous exhibition play on 20 boards.

White: George Koltanowski. Black: Garry Wilson.

San Carlos, July 26, 1968.

Colle System, Stonewall Pattern

1 P-Q4	N-KB3	16 BxQ	NxP(j)
2 N-KB3	P-K3	17 B-Q7	R-B3
3 P-K3(a)	P-QN3	18 N-B4	R-N3(k)
4 QN-Q2	B-N2	19 K-R1	R-R3
5 B-Q3	P-Q4(b)	20 N-K5	RxPch
6 N-K5	B-K2	21 K-N1	R-R3
7 0-0	0-0	22 NxN	PxN
8 P-KB4(c)	N-K5(d)	23 K-N2	R-Q1
9 Q-B3	P-KB3(e)	24 B-R4	B-R3
10 N-N4(f)	P-KB4(g)	25 R-R1	RxR
11 N-K5	N-Q2	26 KxR	B-K7
12 P-KN4	P-B4	27 B-N3	P-B5
13 P-B3	Q-K1	28 B-B2	B-B6ch
14 B-N5(h)	N12xN(i)	29 Resigns(1)	
15 QxN	QPxQ		

(a) Koltanowski always plays the Colle System in tribute to the memory of his countryman Edgard Colle, whom he once defeated in a contest for the championship of Belgium.

(b) Locks in the **QB**, but Black cannot afford to ignore White's threat of **P-K4**.

(c) Giving up the fight for control of his **K4** in favor of direct K-side operations. Consistent is **8 Q-K2** (Now **8 . . . N-K5** loses out to **9 P-KB3x**) with **P-K4** to follow soon.

(d) The right reaction. Black's Knight stands at the crossroads of White's position.

(e) Do unto others what they would like to do unto you . . .

(f) Avoiding the pitfall of **10 NxN? PxN 11 N-N3 P-K5**.

(g) This two stage advance of the **KBP** nets Black a valuable tempo.

(h) Costly aggression in an even position. The quiet retreat **14 Q-N2** threatens **15 B-N5** and clears a path for the entrance of White's reserves to the King side.

(i) This surprise rejoinder stops White in his tracks. Now **15 BxQ NxQch 16NxN13 QRxB** leaves Black a piece ahead.

(j) White has a lost game on his hands, but Black still must solve some technical problems.

(k) A neat winning finesse, much better than **18 . . . R-R3 19P-KR3!** (**19 N-K5? NxRP 20 R-B2 N-B6ch**) **RxP 20 BxPch K-B1 21 BxP**.

(1) Further resistance is useless.

★ ★ ★

## WHERE TO PLAY CHESS

The Hayward Chess Club, 2058 D St. (Hayward Arts and Science Center). Monday and Friday, 8-11 p.m.

Cherryland Cafe, 22472 Meekland Ave. (corner of A St. and Meekland Ave.), Hayward. Evenings, 10 p.m. to 6 a.m.

The Fremont Chess Club, School St., Niles (Niles Community Center, Close to Niles High School). Monday, 7-11 p.m.

The Newark Chess Club, Cedar Blvd. (Newark Community Center). Friday, 7-10 p.m.