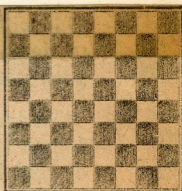


chess

by richard shorman



Too many false steps in the opening suffice in this short scuffle to cripple Black's game beyond repair. Still, White deserves great credit for coolly marshalling his forces against an able opponent, steering clear of premature attacks, and translating his advantage into a pleasing win.

White: Jim Fosaaen (Concord "C" team).

Black: Roy McCollough (Concord "A" team).

CFNC League Match, Dec. 15, 1967.

Sicilian Defense

1 P-K4	P-QB4	9 N-QN5	N-R3
2 N-KB3	N-KB3(a)	10 B-QB4	Q-N1(i)
3 N-B3(b)	N-B3(c)	11 O-O	BxN
4 P-Q4	P-K3(d)	12 QxB	K-Q1(j)
5 B-K3(e)	P-QN3(f)	13 B-N5(k)	K-B1
6 P-Q5	PxP(g)	14 BxN	PxB
7 PxP	N-QN1	15 QxP	Resigns(l)
8 P-Q6	B-N2(h)		

(a) The Nimzovitch variation, which international master Harry Golombek termed "an intelligent anticipation of Alekhine's Defense."

(b) The most vigorous continuation is 3 P-K5.

(c) Best. The older line with an immediate 3 . . . P-Q4 falls short of equality after 4 PxP NxP 5 B-N5ch N-B3 6 N-K5! NxN 7 QPxN! (the reinforcement) QxQch 8 KxQ B-Q2 9 BxN BxB 10 NxB PxN 11 P-QB4.

(d) A near fatal transposition. Black must first play 4 . . . PxP if he wishes to follow normal procedure, but 4 . . . P-Q4! is more to the point.

(e) Too conservative: 5 P-Q5 nets White a telling positional plus.

(f) Black mistakenly believes his formation to be sound. Still correct is 5 . . . PxP.

(g) Opening the K-file only adds to Black's woes.

(h) Now Black is beyond salvation. Only 8 . . . P-N3 with castling to follow offers any hope. Then if 9 Q-K2, Black can play on with 9 . . . B-QR3 10 N-QN5 BxN 11 QxB B-N2. White's strongest response (after 8 . . . P-N3), however is 9 B-QB4! (even better than 9 B-KN5 B-N2 10 Q-K2ch K-B1) B-N2 10 N-Q5!

(i) Black is running out of moves.

(j) Or 12 . . . BxP? 13 NxB QxN 14 QxRch.

(k) The last straw.

(l) The King is dead: 15 . . . R-N1 16 QxP R-R1 17 Q-K8ch K-N2 18 B-Q5mate.

New Year Open

The Concord and Walnut Creek Chess Clubs are sponsoring the first annual New Year Open Championship Tournament to be held at the Walnut Creek Recreation Center (on Civic Drive), Saturday and Sunday, Jan. 6-7, 1968. Five divisions will vie for a share of the \$150 guaranteed prize fund (plus trophies) in a five-round Swiss system event directed by Jerry Long. Entry fees are \$10 + CFNC membership for the Master/Expert Division, \$5 + CFNC membership for Classes "A", "B" and "C" and \$3 for the Junior Division (16 years and under with no USCF or CFNC rating). Round one begins promptly at noon, Saturday, Jan. 6.

Where To Play

The Hayward Chess Club, 2058 D Street (Hayward Arts and Science Center). Monday and Friday, 8-11 p.m.

The Newark Youth Center, 37230 Ash Street, Newark. Friday, 7-10 p.m.