

THE WRONG ROOK

THE WRONG ROOK is printed (haphazardly), issued monthly (you should be so lucky), and dedicated to Fun Chess (if you win).

All contributions in the way of games, articles or anything else should be sent to: Dan McDaniel, 2881 Kennedy Street, Livermore, CA 94550.

12 ISSUES - \$12

September 1986

DEATH MATES HENRY

Robert Lee Henry, 42, a long time member of the local chess scene, died early last month after a long bout of illness.

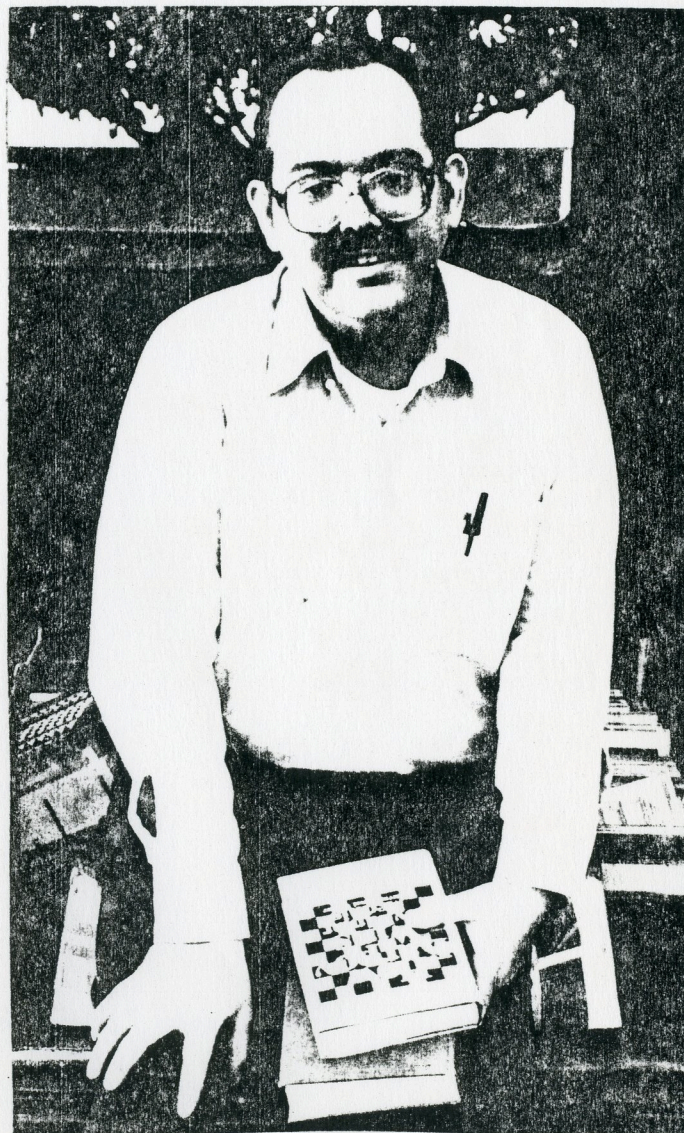
Mostly known throughout the Bay Area as a discount seller of chess books, clocks and tournament equipment, Bob was able to play a pretty mean game, also. Two of his games follow.

He will be missed by all.

4-13-64 Simultaneous

(W) Robert J. Fischer
(B) Robert Henry

1 e4 e5 2 Nf3 Nc6 3 Bc4 Nf6
4 Ng5 Bc5 The Wilkes Barre variation. 5 Bf7 Fischer varies from MCO, probably figuring to nail his opponent in the massive complications that follow. But if Henry had one strength, it was in the opening, since as a chess book seller, he wasn't suprised too often with his "library" to draw on. 5...Ke7 6 Bd5 Rf8 7 00 h6 8 Nf3 d6 Henry is getting a good lead in development for his pawn, but how safe is his king? 9 Bc6 bc 10 d4 ed 11 Nd4 Who am I to criticize Bobby Fischer, but it



Robert Lee Henry, 1944-1986

Fischer-Henry

seems that there are an awful lot of moves by this knight in the first few moves. White should get his queenside pieces out. 11...Kf7 Offering a second pawn to get his king to safety, after which the activity of the black guys will become very dangerous. 12 Nc3 Kg8 13 Nc6 Qe8 14 Nd5 Nd5 If 14 Qc6 15 Ne7 wins the queen. 15 ed Ba6 16 c4 Bc4 17 Bh6 Fischer was probably counting on this. 17...Bf1 18 Qg4 Bf2 19 Kh1 Bg2 20 Qg2 Qf7 21 Rf1 Rae8 The wrong rook. 22 h3 Bg3 Cutting of the pin on the g-pawn and flight squares for the white king. 23 Rf7 Re1 24 Qg1 Rg1 25 Kg1 Rf7 And black is an exchange up. 26 Be3 a6 27 Kg2 Be1 28 b4 Kh7 29 a3 Rf5 30 Nb8 a5 31 ba Ba5 0-1.

* * * *

1-31-81 Simultaneous

(W) James Tarjan
(B) Robert Henry (2082)

1 e4 c5 2 Nf3 d6 3 d4 cd 4 Nd4 Nf6 5 Nc3 a6 6 Bc4 e6 7 Bb3 b5 8 00 Be7 9 f4 00 10 e5 de 11 fe Bc5 Probably the first suprise for white. If 12 ef Qd4 13 Qd4 Bd4 14 Kh1 Bf6 and black is a pawn up. 12 Be3 Nfd7 13 Ne4 Bd4 14 Qd4 Nc6 Black has wrested the initiative from white. 15 Qc3 Nce5 16 Rad1 The wrong rook. 16...Bb7 17 Nc5 Bd5 18 Bd5 ed 19 Nd7 Nd7 20 Rd5 Qe7 21 Bd4 Rac8 22 Qg3 f6 23 Re1 Qf7 24 Qb3 Kh8 25 Rd6 Rc4 Better than trading queens. 26 Qd3 Re8 27 Re8 Qe8 28 Bc3 Rc7 29 h3 h6 Both players showing their cowardly instincts. 30 a3 Kg8 31 Ra6 Nc5 32 Qd5 Kh7 33 Qf5 g6 34 Qf6 Na6 35 Qa6 Qe3 36 Kh1

36...Qc1 37 Kh2 Qf4 38 Kh1 Rd7 The white queen is in Bermuda. 39 Qe6 Rd1 40 Be1 Qf1 41 Kh2 Re1 42 Qd7 Kg8 0-1.

* * * * *

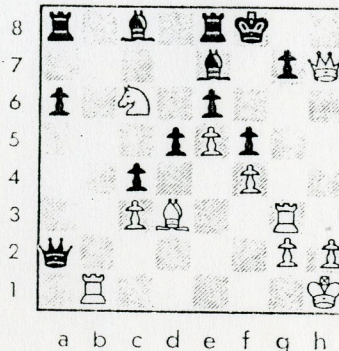
(W) Art Simpson
(B) Ms. Glyn Morgan

1 e4 e5 2 f4 Nf6 This is what we lust after. Unsound openings generally lead to quick crushes or wonderful complications, either which is meat for my maw. 3 Nc3 Bc5 4 Bc4 d5 5 Nd5 Ne4 6 Ne3 The saving move. (He thinks). 6...Qh4 7 g3 Instead, 7 Kg2 allows white to fight on. After all, the king is a fighting piece. 7...Ng3 8 Ng2 Qh6 9 d4 Nh1 10 fe Qh2 0-1

* * * * *

(W) Dan McDaniel (1824)
(B) Novag Expert (level 3)

1 e4 c5 2 Nf3 d6 3 d4 cd 4 Nd4 Nf6 5 Nc3 a6 6 Be2 e6 7 Bg5 Be7 8 f4 00 9 00 d5 10 Bf6 As usual, Dan goes his own way, ignoring the superior 10 e5. His thinking is: space plus tempo verus the king equals attack. 10... Bf6 11 e5 Be7 12 Bd3 Bc5 13 Ne2 Qb6 14 c3 Qb2 Black falls for the old poison pawn trick. 15 Kh1 Nc6 16 Rf3 f6 17 Rh3 f5 18 Nf3 Moving another piece towards the king. 18...Be7 Can't allow the knight at g5. 19 Rb1 One poison pawn makes you ill, two is fatal. 19...Qa2 20 Ned4 Rd8 21 Nc6 bc 22 Nc4 c5 23 Nc6 Re8 24 Qh5 Kf8 25 Qh7 c4 26 Rg3



McDaniel-Novag Expert

One last tempo for white and it's death to the black king. My philosophy is give up anything on the queenside if you can get to the king first.

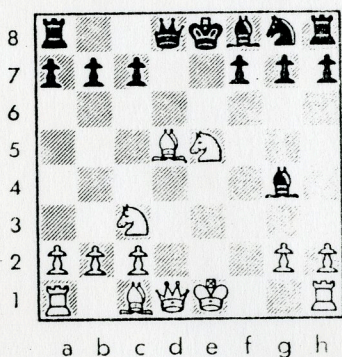
26...g5 27 Ne7 Re7 If 27...cd
28 Ng6 mate. 28 Qh8 Kf7 29 Rg5 1-0.

* * * * *

Paris 1968

(W) D. Gedult
(B) Rabe

1 f3 What!?! 1...d5 2 e4 de
3 Nc3 Anything, to transpose into a Blackmar-Diemer. 3...ef 4 Nf3 Bg4 5 Bc4 e6 6 d4 Nc6 7 d5 ed 8 Bd5 Ne5 9 Ne5
This is awful damn early to offer your queen. Does white really see everything that follows?



9...Bd1 10 Bf7 Ke7 11 Bg5 Nf6
12 Nd5 Kd6 13 Rd1 Ke5 14 Bf4
White's attack is like a vacuum cleaner, sucking black forward. 14...Kf5 15 Bc7 Qc8
16 00 Kg4 17 Rd4 Kg5 18 Bf4 Kh4
Considering black's position, white really has two rooks and a bishop for his queen...not a bad trade. 19 Nf6 gf 20 Be3 Qg4 21 g3 Kh3
22 Be6 h5 23 Rg4 hg 24 Bd5
with mate at g2 to follow.
Brilliant!! 1-0

* * * * *

From the U.S. Open, 1986.

(W) Craig Mar
(B) Sid Rubin

1 d4 d5 2 c4 e6 3 Nc3 c5 4 e3 Nf6 5 Nf3 Nc6 6 a3 dc You should always capture towards the center. 7 Bc4 Be7 8 00 00 9 dc Bc5 10 b4 Bd6 11 Bb2 Qe7 12 Qc2 Bd7 13 Rad1 The wrong rook. 13...Rfd8 14 Ne4 Ne4 15 Qe4 Rc8 16 Rd6 Deflecting the last piece away from the king. 16...Qd6 17 Ng5 g6 18 Qh4 h5 19 Ne4 Qe7 20 Nf6 Kf8 21 Qf4 g5 22 Qg5 Qd6 23 Nh7 1-0. If 23...Ke8 24 Qg8 Ke7 25 Bf6 mate.

* * * * *

Berkeley, 1980

(W) Vince McCambridge (2418)
(B) Borel Menas (2106)

1 d4 d5 2 c4 c6 3 Nc3 e6 4 Nf3 Nd7 5 e3 f5 6 Qc2 Qf6 7 Bd3 Nh6
Overprotection of the strong-point f5. 8 Bd2 Bd6 9 h3 White is running out of ideas. 9...dc 10 Bc4 e5 11 00 Nf7 Switching strong points. 12 de Nde5 13 Ne5 Ne5 14 Bb3 Nf3 Whoop! Whoop! 15 Kh1 Qe5 16 g3 f4 17 Nf4 Qh5 18 Nd6 Kf8 19 h4 Qg4 0-1. Because if 20 Kg2 Nel 21 Rfel f3 22 Kgl Qh3 with mate at g2.

* * * * *

(W) Jon Kirby (1888)
(B) Novag Expert (level 4)

1 e4 e5 2 d4 Nc6 3 Nf3 ed 4 Bc4 Nf6 5 00 d6 6 c3 Ne5 7 Ne5 de 8 cd ed 9 Qb3 Qe7 10 Bg5 This looks like the famous Paris opera box game by Morphy. 10...h6 11 Bh4 g5 12 Bg3 Bg7 13 Nd2 00 14 Rael Nh5 15 f4 Ng3 16 hg Be6 17 f5 Learning from Blackburne. 17...Bc4 18 Nc4 c5 19 e5 Qd7 20 f6 Bh8 21 Nd6 b6 22 Nf5 Kh7 23 Qd3 c4 24 Qc4 Rad8 25 Qd3 h5 26 e6 The discovered can wait. 26...Qc7 27 ef Bf6 28 Ne7 Kh8 29 Rf6 1-0 Jon likes to kick blind puppies, too.

QUICKIES
by Bill Wall

Wall - Waltour, Dayton 1983

1 b4 d5 2 Bb2 Nc6 3 b5 Nb4?? 4 a3 1-0

Lehmann - Schulz, 1950

1 c4 d5 2 cxd5 Nf6 3 e4 Nxe4?? 4 Qa4+
1-0

Wall - Mitchell, North Carolina 1978

1 e4 Nc6 2 d4 g6 3 d5 Ne5?? 4 f4 1-0

Spiel - Kunzel

1 e3 e5 2 Qf3 d5 3 Nc3 e4 4 Qe4?? Bd6
0-1

Combe - Hasenfuss, Folkestone 1933

1 d4 c5 2 c4 cxd4 3 Nf3 e5 4 Nxe5??
Qa5+ 0-1

Halics - Lanz, Vienna 1932

1 d4 Nf8 2 Nf3 c5 3 Bf4 cxd4 4 Nxd4??
e5 (5 Bxe5 Qa5+ and 6...Qxe5) 0-1

Tchinenoff - Maillard, Paris

1 e4 e5 2 f4 Bc5 3 fxe5 Qh4+ 4 Ke2??
Qxe4+ 0-1

Fraenkell - N.N., Helsinki 1934

1 c4 c5 2 Nc3 e6 3 Nf3 Ne7 4 Ne4 f5?? 5
Nd6 mate 1-0

Michel - Iliesco, Argentina 1943

1 e4 c5 2 Nf3 d6 3 d4 b6 4 dxc5 bxc5 5
Qd5 1-0

Wall - Brandon, Dayton 1980

1 e4 e5 2 f4 f6 3 fxe5 fxe5 4 Qh5+ g6 5
Qxe5+ 1-0

Whitt - Hardesty, Dayton 1984

1 e4 e5 2 Nf3 Nf6 3 Nxe5 Nxe4 4 Qe2
Bd6?? 5 Qxe4 1-0

Wick - Wall, Okinawa 1971

1 g3 e5 2 Bg2 d5 3 Nh3 Nf6 4 f4 e4 5
e3?? Bg4 0-1

Bodvarsson - Olafsson, Iceland 1947

1 f4 e5 2 fxe5 d6 3 exd6 Bxd6 4 Nf3 Nc6
5 h3?? Bg3 mate 0-1

Katreigs - N.N., Hartford 1977

1 d4 e5 2 dxe5 Nc6 3 Nf3 Qe7 4 c3 Nxe5
5 Ncd2?? Nd3 mate 0-1

Arnold - Hanauer, Philadelphia 1936

1 d4 Nf6 2 c4 e5 3 d5 Bc5 4 Bg5 Ne4 5
Bxd8?? Bxf2 mate 0-1

Shirazi - Peters, Berkeley 1984

1 e4 c5 2 b4 cxb4 3 a3 d5 4 exd5 Qxd5 5
axb4?? Qe5+ 0-1

Rigaud - Cooper, Skopje 1972

1 e4 e5 2 f4 d5 3 fxe5 Qh4+ 4 g3 Qxe4+
5 Kf2 Bc5+ 0-1

Mergel - N.N., W. Germany 1978

1 b4 c6 2 Bb2 Qb6 3 a3 a5 4 c4 axb4 5
c5 Qxc5?? 6 axb4 1-0

Fenic - Botha, Dayton 1980

1 b3 e5 2 Bb2 Nc6 3 Nf3 e4 4 Nd4 Bc5
5 Nxc6 bxc6 6 Bxg7 1-0

Krejzick - Takasch, Vienna 1921

1 e4 d5 2 Nf3 dxe4 3 Ng5 Qd5 4 d3
exd3 5 Bxd3 Qxg2?? 6 Be4 1-0

Shoenberger - Siplin, Dayton 1981

1 d4 f5 2 e4 fxe4 3 Nc3 Nf6 4 Bg5 h6 5
Bxf6 gxf6?? 6 Qh5 mate 1-0

Griffiths - Mann, Britain 1982

1 e4 f5 2 exf5 d5 3 Qh5+ g6 4 fxg6 Nf6
5 g7+ Nxf5 6 gxh8=Q 1-0

Hand - Stroud, Dayton 1981

1 e4 b6 2 d4 d5 3 e5 c5 4 c3 Ba6? 5
Bxa6 Nxa6 6 Qa4+ 1-0

Wall - Trogdon, Dayton 1979

1 e4 Nc6 2 d4 b6 3 c3 Bb7 4 Nf3 Nf6 5
e5 Nh5?? 6 Ng5 1-0

Wall - Collins, North Carolina 1976

1 e4 d5 2 exd5 Qxd5 3 Nc3 Qf5 4 Nb5
Qe5+ 5 Be2 c6 6 d4 1-0

Gronbchevsky - Ohlin, USSR 1973

1 e4 Nf6 2 Nc3 d5 3 e5 Ne4 4 Nce2 d4 5
c3 dxc3 6 Qa4+ 1-0