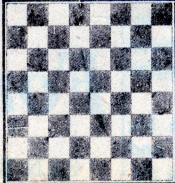


chess

by richard shorman



Botvinnik's chess style is full of concentrated, directed energy and forceful logic, especially in positions difficult for both sides. Here we see him repulsing a vigorous K-side attack with carefully planned counter-strokes.

Original notes by the winner from Baturinsky's **Shakhmatnoe tvorchestvo Botvinnika** (Botvinnik's Chess Art), vol. II, Moscow, 1966, pp. 537-38.

White: Nikola Padevsky.

Black: Mikhail Botvinnik.

Alekhine Memorial Tournament, Moscow, 1956.

Sicilian Defense

1 P-K4	P-QB4	14 PxR(f)	NxP
2 N-KB3	N-QB3	15 Q-N4	Q-B1!(g)
3 P-Q4	PxP	16 R-B3	NxB
4 NxP	N-B3	17 RPxN	P-B4
5 N-QB3	P-Q3	18 Q-R4(h)	P-K4
6 B-QB4(a)	P-K3	19 R-KR3	P-KR3
7 0-0	B-K2	20 Q-R5(i)	QxP
8 B-K3	0-0	21 R-Q1	PxN(j)
9B-N3	N-QR4(b)	22 B-Q2(k)	Q-B3
10 P-B4	P-QN3	23 PxP	N-N4(1)
11 Q-B3(c)	B-N2	24 R-N3	Q-R8ch
12 P-N4(d)	R-B1	25 K-B2	N-K5ch
13 P-N5(e)	RxN!	26 Resigns	

(a) One of the Bulgarian master's favorite lines. The text move was introduced in a game by Soviet chess player Veniamin Sozin (Sozin —Rokhlin, Odessa, 1929).

(b) The fastest way to deploy the QB on the long diagonal. Also, the Knight can be traded off for White's KB at the proper moment. Placing the Knight on the rim of the board looks suspicious all the same, though, and with correct play should work to White's advantage.

(c) It is imperative to begin active operations at once with **11 P-K5!**

(d) Or **12 P-B5 P-K4 13 N-4-K2 NxB 14 RPxN P-Q4** and Black has the initiative.

(e) White cannot play **13 N-4-K2** because of **13 . . . NxKP 14 NxN P-Q4**, which shows that the Knight defending the QB is now well situated.

(f) Loses a valuable center Pawn, opens the long white diagonal, and places White's game in jeopardy. Definitely better is **14 PxN RxB 15 QxR** (of course not **15 PxB RxQ 16 PxQ-Q RxRch 17 RxR RxQ**) **BxBP**, although even here White's insecure King position makes Black's game preferable in view of his strong Bishops. Padevsky keeps his **KNP** on the board to spearhead his intended attack against the enemy King.

(g) After **15 . . . P-N3** White can sacrifice a Rook for complications, i.e., **15 P-B5 KPxP 16 RxP PxR 17 NxP**. Now if **16 P-B5**, Black plays **16 . . . P-K4 17 N-B3 NxB 18 RPxN QxQBP 19 QR-K1 P-Q4**, with **B-B4** to follow.

(h) Black's task is more difficult after **18 PxPe.p.**, e.g., **18 . . . NxKBP 19 QxKPch QxQ 20 NxQ BxR 21 NxR KxN 22 RxP P-QN4 23 B-Qr**, and Black must solve some technical problems. He has a sure win, however, with **18 . . . RxP 19 P-B5 PxP 20 NxP B-B1 21 N-R6ch** (or **21 QR-KB1 R-N3 22 N-R6ch PxN**) **RxN 22 QxQ R-N3ch 23 K-B1 BxQ 24 RxP B-N5 25 KR-B7 B-R6ch 26 K-K1 R-K3**.

(i) The last chance. White threatens **PxRP** and **PxNP**, but his own King comes under heavier fire.

(j) Parrying **22 PxRP** with the threat of **22 . . . PxB**, and Black defends his vital **KNP**.

(k) Also hopeless is **22 BxP QxBP 23 PxP N-B3**.

(l) More precise than **23 . . . N-B3 24 Q-N6**.

★ ★ ★

BAY AREA AMATEUR CHESS CHAMPIONSHIPS

The Oakland Chess Club will host the third annual Bay Area Amateur Open on Saturday and Sunday, Dec. 14-15, at the CACA Oakland Lodge, 303 Eighth St. (five blocks from downtown Oakland). Open to all chess players with less than 2,000 rating points (below Expert). Unrated players will be given a provisional rating for classification purposes. Overall winner will receive \$25, a trophy, the title, and 20 per cent of the net profit from the tournament. First "A", "B", and "C" will receive 20 per cent each of the net profit. Additional prizes will be awarded. Entry fee for this five-round Swiss system tourney is \$5 plus membership in USCF. Round one begins at 11 a.m., Saturday, Dec. 14.

★ ★ ★

WHERE TO PLAY CHESS

The Hayward Chess Club, 2058 D St., (Hayward Arts and Science Center). Monday and Friday, 8-12 p.m.

Cherryland Cafe, 22472 Meekland Ave. (corner of A St. and Meekland Ave.), Hayward. Evenings, 10 p.m. to 6 a.m.

The Fremont Chess Club, 37720 Fremont Blvd. (Centerville Jr. High School). Thursday, 7-10 p.m.

The Newark Chess Club, 35501 Ceadr Blvd. (Newark Community Center). Tuesday, 7-10 p.m.