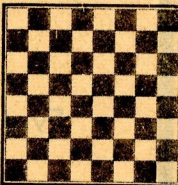


The Argus July 16, 1968.

chess



by richard shorman

Robert Martinez, Hayward, a "lowly" class "C" player, defeated one class "A" opponent, drew with another and beat an expert to earn a well-deserved trophy at the San Bruno Chess Festival.

White: Wade Hendricks (CFNC rating, 2019).

Black: Robert Martinez (CFNC rating, 1593).

San Bruno Chess Festival, July 4, 1968.

French Defense

1 P-K4	P-K3	15 B-N4(h)	Q-R3
2 P-Q4	P-Q4	16 N-N5(i)	QR-B1
3 N-QB3	B-N5	17 P-R5(j)	P-B3
4 P-K5	N-K2	18 N-B3	PxNP(k)
5 P-B4(a)	P-QB4	19 N-Q2	P-B4
6 N-B3(b)	QN-B3	20 Q-N1(l)	R-R6
7 P-QR3	BxNch	21 Q-R2	R-1-R1
8 PxB	P-B5(c)	22 NxP(m)	K-Q1(n)
9 B-K2	Q-R4	23 R-B2	P-N6
10 0-0(d)	B-Q2(e)	24 B-B1(o)	QxRch
11 P-QR4	N-B4(f)	25 KxP	RxPch
12 P-N4	N-4-K2	26 K-K1	R-R8,
13 Q-K1(g)	0-0-0	and White played on to move	
14 B-R3	P-R4	48 before resigning.	

(a) Using a tempo to overprotect the KP. The main line runs 5 P-QR3 BxNch 6 PxB P-QB4 7 P-QR4 QN-B3 8 N-B3 Q-R4 9 Q-Q2 with complex equality.

(b) Or 6 P-QR3 BxNch 7 PxB Q-R4 8 B-Q2 Q-R5 9 N-B3 P-QN3 10 B-K3 B-R3 11 BxB NxP, and Black stands well.

(c) More incisive is 8 . . . Q-R4 in order to answer 9 Q-Q2 with 9 . . . Q-R5, e.g., 10 R-QN1 P-B5 11 B-K2 0-0, and Black has fully equalized.

(d) White thinks his forward QBP is immune. After 10 B-Q2 a complicated but level middlegame results.

(e) "A Pawn is worth a little trouble," so why not 10 . . . QxBP 11 B-Q2 Q-N7 12 P-B3 0-0? A reasonable alternative to the textmove is 10 . . . Q-R5, preventing White's planned P-QR4, B-R3.

(f) Now 11 . . . QxBP is not as good: 12 B-Q2 Q-N7 13 R-N1 Q-R6 14 RxP QxP 15 Q-N1. With his last move Black deliberately provokes 12 P-N4 in hopes of opening the KR file after . . . P-KR4.

(g) Prefer 13 Q-Q2 here.

(h) A thoroughly useless "attack" that leads directly to White's demise. Essential is 15 P-N5.

(i) Still pretending to be the aggressor, White strikes another empty blow.

(j) Else the Pawn falls to 17 . . . NxB 18 PxN BxP.

(k) Black's ideas have proven stronger. The open KR file is a winner.

(l) Instead of trying vainly to conjure up an attack, White must switch over to the defense with 20 R-B2.

(m) Fascinated by the prospect of trapping Black's Queen, but to no avail.

(n) More clear-cut, although not as flashy, is 22 . . . NxB 23 PxN PxN 24 BxBP Q-B3 25 P-N5 Q-K5 with an easy win after 26 P-B3 P-N6.

(o) Loses everything in sight, but everything else just loses.

★ ★ ★

CCCA REGIONAL OPEN

The Berkeley YMCA Chess Club will hold an open tournament at the Berkeley YMCA, 2001 Allston Way, Saturday and Sunday, July 20-21, 1968. The USCF section will be fully rated; the Central California Chess Association (CCCA) section and the Junior section will be unrated except for the purpose of determining prizes and pairings. All entry fees collected from the USCF section (minus expenses) will be returned in four cash prizes.