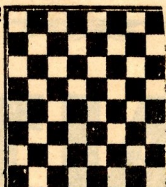


# chess

by richard shorman



Emanuel Lasker, world chess champion for 27 years, said of this game, "It demonstrates in beautiful harmony the valuable qualities of a chess player: clear position judgment, bold, far-reaching combination and decisive action at the right moment. What renders the game all the more valuable is that White's mistakes are not at all of an extraordinary nature and that Black's tender of the Bishop is not a mere rap, but a correct and sound sacrifice."

White: Amateur. Black: George Derrickson.  
Giuoco Piano

1 P-K4	P-K4	10 N-KB3(f)	N-N4
2 B-B4	N-KB3	11 BxQ	BxPch
3 N-KB3	N-B3	12 RxB	PxRch
4 0-0	B-B4	13 K-B1	R-R8ch
5 P-Q3(a)	P-Q3	14 K-K2	RxQ
6 B-KN5(b)	B-KN5(c)	15 KN-Q2(g)	N-Q5ch
7 P-KR3(d)	P-KR4	16 KxR	N-K6ch
8 PxB(e)	PxP	17 K-B1	N-K7mate
9 N-R2	P-N6		

(a) Starting from a Bishop's Opening, the game has passed through a Petroff's and Two Knights' Defense, almost transposed into the Max Lange Attack (5 P-Q4), and finally settled down into a quiet line of the Giuoco Piano.

(b) Pinning the KN before Black has castled practically invites him to launch a K-side pawn storm. Note, too, that substituting castling for N-QB3 deprives White of the meager resource. 6... P-KR3 7 BxN QxB 8 N-Q5 Q-Q1.

(c) After 6... P-KR3 the continuation might run 7 B-R4 P-KN4 8 B-KN3 P-KR4! 9 NxNP P-R5 10 NxP PxBI 11 NxQ B-KN5 12 Q-Q2 N-Q5 13 P-KR3 (Or 13 N-B3 N-(B6ch 14 PxN BxP 15 PxP R-R8mate, Dubois—Steinitz, London, 1862.) N-K7ch 14 K-R1 RxPch! 15 PxR B-B6mate (Ashley—Tollit, Birmingham, 1923).

(d) Suicidal. Correct is 7 P-B3, even 7 QN-Q2.

(e) "White accepts the offer, relying upon Black's Queen being locked out through the pinning of the Knight. However, if White were not to take the Bishop, it would entail a precarious position for the first player: 8 QN-Q2 Q-Q2 (threatening 9... BxRP with an irresistible attack) 9 K-R2 (or 9 PxP PxP 10 N-K1 P-N6 11 B-K3 N-KN5, or 10 BxN PxP 11 N-R2 P-N6 12 N-N4 0-0-0, and wins) 0-0-0 10 P-B3 QR-B1; and White has after P-QN4, P-QR4 and Q-N3 chances for counter-attack." — Lasker.

(f) Stronger, though insufficient to save the game, is 10 N-N4, i.e., 10... K-Q2! (Lasker) 11 BxN (Black threatened 11... R-R8ch 12 KxR Q-R1ch 13 K-N1 NxN with mate to follow.) PxP 12 R-K1 P-B4, and Black's heavy pieces cannot be contained. The text move allows a particularly brilliant finish.

(g) The only rational way to stop 15... P-B8/Qmate, but 15 QN-Q2 RxR 16 B-R4 does prolong the agony.

★ ★ ★

## RAPID TRANSIT TOURNAMENT

The Hayward Chess Club, 2058 D St., will host a rapid transit tourney (ten seconds a move) Monday, Dec. 2, at 8 p.m. Monthly winner receives a certificate, annual winner a trophy. Entry fee 35 cents.

★ ★ ★

## JUNIOR CHESS CHAMPIONSHIP

The 1968 CFNC Junior Chess Championship for Contra Costa County will take place at the Mt. Diablo YMCA, 350 Civic Drive, Pleasant Hill, on Saturday and Sunday, Dec. 7-8. The tournament will be in three sections (10 years old or younger, 11-13 and 14-15) with up to five trophy winners in each section. Entry fee \$3, which includes a free one year membership in Chess Friends of Northern California (CFNC) and a chance for the winners to play for the CFNC Bay Area Junior Championship. CFNC Director Roy McCollough will direct the event. Round one begins promptly at noon, Saturday, Dec. 7.

★ ★ ★

## USCF MEMBERSHIP DISCOUNTS

The Central California Chess Association (OCCA) is continuing its drive to support the United States Chess Federation by offering USCF memberships at a 20 per cent discount, if sent to the OCCA Treasurer, Leonard Trottier, 5315 MacDonald Ave., El Cerrito, Calif. 94530. The reduced rates are \$8 a year for adults (regularly \$10) and \$4 for those under 21 at expiration of membership (regularly \$5), and includes a year's subscription to *Chess Life* plus a national chess rating.