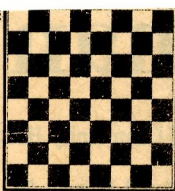


chess

by richard shorman



TOURNAMENT RESULTS

Raymond Ng directed the 1969 East Bay Junior Championship Tournament held January 25-26 in Oakland. The top three winners in each age group have been invited to play in the Northern California Junior Championships, February 22-23, in Hayward. Complete results:

14-15 Age Group

1. Edward Salvador, Hayward High, 5-0, trophy.
2. Ed Silva, Castro Valley High, 3½-1½, trophy.
3. Steve Quen, Mt. Eden High, 3½-1½, book.

11-13 Age Group

1. Craig Barnes, Berkeley High (W. Campus), 5½-½, trophy.
2. Jim Harner, Martin Luther King Jr. High, 5-1, trophy.
3. Paul Keaton, Mt. Eden High, 4-2, book.

10 and Under

1. Dennis Fung, Cleveland Elementary, 2½-3½, trophy.

All entrants received certificates of participation signed by International Master George Koltanowski and the tournament director.

★ ★ ★

Relentlessly aggressive, White never loses sight of his quarry for an instant. A powerful combination finally smashes through enemy lines and White walks away with the spoils of war.

White: Everett McNally. Black: David Rapport.

CFNC League Match, Oakland, January 24, 1969.

French Defense

1 P-Q4	P-K3	17 QN-Q4	N-4xN
2 P-K4	P-Q4	18 NxN	Q-B5
3 P-K5	P-QB4	19 Q-K3	NxN
4 P-QB3	Q-N3(a)	20 RxN	Q-B4(h)
5 P-KB4(b)	B-Q2	21 P-B5(i)	R-B3(j)
6 N-B3	B-N4	22 PxP	RxP(k)
7 B-K2	BxB	23 RxBP!	QxR(l)
8 QxB	N-QB3(c)	24 PxQ	KxR
9 B-K3	N-R3	25 Q-B3ch	K-K2
10 PxP(d)	BxP	26 QxP	R-QN3
11 BxB	QxB	27 Q-B5ch	K-K3
12 QN-Q2	Q-N3(e)	28 P-KN4(m)	R-Q1
13 N-N3	N-B4	29 Q-B4ch	K-K2
14 R-Q1	R-QB1	30 P-Q5	RxNP
15 RQ3(f)	Q-R3(g)	31 P-Q6ch	K-B1
16 0-0	QxP	32 Q-B7	Resigns

(a) Black hopes to equalize quickly in the opening by developing and trading off his problem QB.

(b) Consistent and aggressive. The positional line is 5 NB3 B-Q2 6 B-K2 B-N4 7 0-0 BxB 8 QxB Q-R3 9 Q-Q1 N-Q2 10 R-K1 N-K2 11 QN-Q2 N-QB3 12 N-B1 PxP 13 PxP B-N5 14 B-Q2 (Rolf Schwartz, *Die Französische Verteidigung*, Hamburg, 1967, pp 507-508), with a level game.

(c) Before contesting his Q5, Black should follow through with his original plan and play 8. . . Q-R3. After 9 Q-Q1 (or 9 QxQ NxQ 10 0-0 R-B1 11 B-K3 N-R3 12 K-R1 N-B4 13 B-N1, and the initiative shifts to Black) N-QB3, White will experience difficulty in castling or be obliged to move K-B2, hindering his operations along the KB file.

(d) White exchanges first in order to take the sting out of N-B4, to secure his Q4 as an outpost for his Knights, and to facilitate the advance of his K-side pawns.

(e) More active is 12 . . . N-B4, threatening to occupy K6, e.g., 13 N-N3 Q-K6 14 P-N4 QxQch 15 KxQ KN-K2.

(f) Simple and strong. White has emerged from the opening with a positional advantage.

(g) Allowing White to complete his development for the sake of a distant wing Pawn. Better is 15 . . . P-KR4.

(h) A Pawn up in a major piece endgame, Black's troubles seem to be over, White's just beginning. . .

(i) But this long-prepared pawn push completely shatters Black's illusions.

(j) White wins after 21. . . 0-0 22 P-B6 KR-K1 (22. . . PxP 23 Q-R6! P-B4 24 R-B3 Q-K2 25 R-N3ch K-R1 26 Q-N7 mate) 23 PxP KxP (23 . . . R-B2 24 Q-R6 and R-B3-R3) 24 Q-N5ch K-B1 25 Q-B6 R-B2 26 K-R1! Q-N4 27 R-KN4 Q-Q6 28 R-N7.

(k) Natural but fatal. Recapturing with 22 . . . PxP cedes White the KB file, yet all it yields him is adequate compensation for loss of a Pawn, e.g., 23 Q-B3 Q-K2 24 R-KB4 R-B2 25 Q-R5ch P-N3 26 Q-B3.

(l) Of course not 23 . . . KxR? 24 R-B4ch and 25 QxQ. A resourceful though insufficient defense is 23 . . . RxP?! 24 QxRch KxR 25 P-QN4! (An equal ending results from 25 QxQPch QxQ 26 RxQ.) Q-N3 (If either 25 . . . Q-B3 or 25 . . . Q-N4, then 26 R-B4ch K-N1 27 Q-N8ch mates.) 26 QxQPch K-K2 (best) 27 Q-Q7ch K-B3 28 K-R! and Black might as well give up.

(m) Precise to the end, White concentrates on keeping his passed pawns mobile.

★ ★ ★

WHERE TO PLAY CHESS

The Hayward Chess Club, 2058 D St., (Hayward Arts and Science Center). Monday and Friday, 8-12 p.m.

Cherryland Cafe, 22472 Meekland Ave. (corner of A St. and Meekland Ave.), Hayward. Evenings, 10 p.m. to 6 a.m.

The Fremont Chess Club, 37720 Fremont Blvd. (Centerville Jr. High School). Thursday, 7-10 p.m.

The Newark Chess Club, 35501 Cedar Blvd. (Newark Community Center). Tuesday, 7-10 p.m.

The Livermore Chess Club, Fourth and J Streets (in the old library of the Carnegie Building). Evenings, the 1st and 3rd Friday of the month.