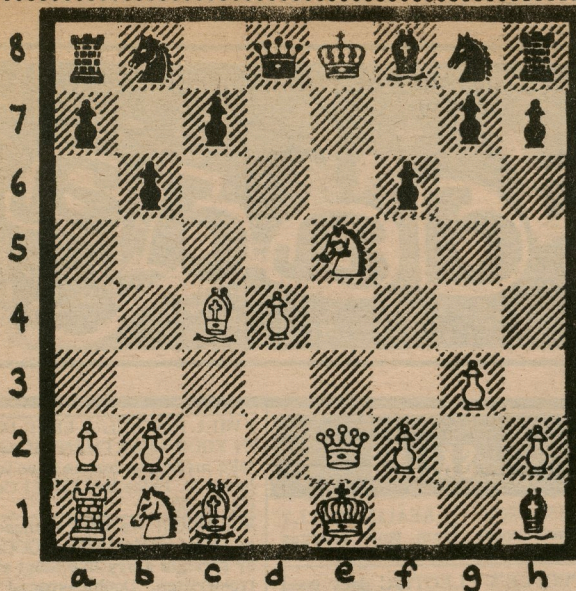


(Diagram no. 3)



Chess Barbs

by Jude Acers (US senior master)

Are you a chess hevy? Prove it! Acers Chess Challenge: White to play and mate in 3 moves. From a Texas exhibition. Ten expert players failed to solve it during my 1971 U.S. tour. Can you? Mail your solution and receive an authentic ACERS checkmark if correct. 150 checkmarks earn you a gold BARB star (no kidding).

News: Reyjavik International Tournament -- 3-way tie for 1st by ICMS Gheorghiu (Rumania), Hort (Czechoslovakia) and Olafsson (Iceland) with 11 points out of 15 rounds. Stein (many time USSR champion) and Andersson second best at 10½. Sweden Open -- 76 players from 12 countries: 1. Timman, 7½; 2. Browne 7-1. Browne involved in sensational incidents as usual. . . Of

great interest was the game between 67-year-old IM Lundin (Stockholm) vs. Relstabt (Hamburg). They first played 42 years ago! Relstabt won then, but Lundin got even at last by winning this time. . . Charles Henin, 1970 Calif. State Champion, died at age 36 in Los Angeles. The veteran master was well known in the Bay Area. . . USCF expert Steve Sawyer worked like a dog to put out his 1st issue of the Calif. Chess Tournament Bulletin, containing all the games he could get his hands on played in Calif. for Jan. 1972. 348 games for a paltry 75 cents. Subscribe at \$7.50 a year (340 Jones #448, S.F. 94102) and be super-ready to blow your opponents off the board at local events. . .

SWEDISH INTERNATIONAL OPEN. White: Brink-Cluasen. Black: Jacobsen. English Opening. (Notes by Acers) 1 c4 e5 2 Nc3 Nf6 3 Nf3(A) Nc6 4 e3 Bb4(B) 5 Qc2 0-0 6 Nd5 Re8 7 Ng5(C) g6 8 Nb4 Nb4 9 Qb3 c5 10 a3 Nc6 11 Qc2 h6 12 Ne4 Ne4 13 Qe4 Nd4 14 Qde d5 15 ed(D) edch 16 Kd1 b5 17 cb(E) Bf5 18 Qg3 c4 19 Be2(F) Re2 20 Ke2 Qe7ch 21 White resigns(G).

(A) Usual is 3 g3 c6 1 with . . . d5 coming like a rocket. Smyslov and Keres proved this was okay for Black. The text is a Sicilian reversed. Black is supposed to roll over and die, but strong masters have shown Black well-placed if he's alert.

(B) Larsen and good.

(C) 7 a3 equalizes.

(D) If 15 cd Bf5 16 e4 c4 17 Qb1 Bd7 18 Bc4 Rc8 19 d3 b5 wins.

(E) 17 cd Qd5 18 Qb5 Ba6 19 Qa4 d3 1 kills.

(F) Wow. 19 d3 Qa5 wins again.

(G) Because of 21 Kd1 Re8 22 Qf3 Be4 23 Qe2 d3 24 Qe3 d4 1 A very neat game by Black.

Questions you ask Jude Acers:
Q. Will you publish some of your games in the BARB? A. No. Q. I am thinking about subscribing to the BARB to get your column. Is it for real? --how long should I subscribe? A. Yes, for 75 years.
Q. Are you a head? A. No. "Dope, Chess and the few ladies who can stand me keep me fully occupied. Also 134 exhibitions in 82 cities and prisons in 1972 with about 200 in the next year now being booked. Chess is actually a mental narcotic, all I can handle, believe me. Everybody in Berkeley is still trying to convert me though!

Q. I would like to write you weekly hate letters. How do I send them to you all year round? A. c/o Max at the BARB. Happy hating. Q. Why are women such stupid chess players? A. I believe you may have been living in a cave for years. Ladies World Champion Nona Gaprindashvili (USSR) is a terrific player and would simply destroy all but totally professional men players without a whiff or sniff. There are many good women players (Kushnir, Alexandria, Aatulovskaya, Ranniku, Borisenko, Volpert, Ivorykina, etc., etc.), but in the U.S. the woman is taught by the husband, old man, or frat rat who wishes to IMPRESS her with the fact that he can play chess before seducing the princess. I have seen dozens of such "teaching sessions" by idiots in chess haunts like Specs' Adlers or the Coffee Gallery. Men want a handy punching bag and their lady friends are expected to play dumb forever. Things will change radically when chess is taught in every US school.
Q. I want to learn to play chess from a chess master without any nonsense. Do you give lessons? A. Run, don't walk to U.S. master John Grefe's chess classes at the Berkeley YMCA. Grefe has beaten four grandmasters and international masters in official U.S. Chess Federation play. And he is lovable! He is the only well-known master in the nation's top 50 players who is interested in teaching token-rate private and group chess lessons. His games are published, analyzed worldwide. Book lessons at 548-8362 fast, because there will never be another chance for the Bay Area to learn from a theorist and player like John Grefe. Weakies and fish more than welcome! All category classes. And Grefe really wants to teach! Lucky you.

Where to play chess: Berkeley YMCA - Fri., 6:30p.m. - 11 p.m.; Hardcastle Coffee Shop, 2516 Telegraph, all hours; East Asia Book & Game Center, 5897 College (in Oakland, a couple of blocks south of Ashby), Tue. and Thurs - Sat., 50c to play from noon to midnight; S.F. Mechanics' Institute Chess Room-4th floor-57 Post, all hours.