

# Chess Barbs

by Jude Acers

(US senior master)

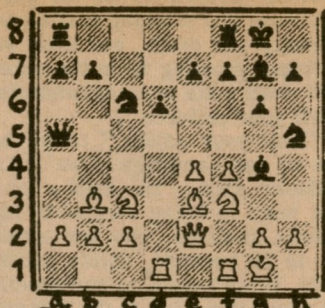
## QUEST FOR THE INITIATIVE

White: Boris Spassky. Black: Robert Fischer. World Championship, Match Game No. 17. Reykjavik, Iceland, Aug. 22-23, 1972. Pirc Defense.

1 e4(A) d6(B) 2 d4 g6 3 Nc3 Nf6 4 f4(C) Bg7 5 Nf3 c5 6dc(D) Qa5 7 Bd3 Qc5 8 Qe2 0-0 9 Be3 Qa5 10 0-0 Bg4(E) 11 Rad1 Nc6 12 Bc4 Nh5 13 Bb3(F) Bc3 14 bc Qc3 15 f5! Nf6(G) 16 h3 Bf3 17 Qf3 Na5 18 Rd3 Qc7(H) 19 Bh6 Nb3 20 cb Qc5ch 21 Khl Qe5(I) 22 Bf8 Rf8 23 fg hg 24 Re3 Rc8(J) 25 Qf4 Qf4 26 Rf4 Nd7(K) 27 Rf2 Ne5 28 Kh2 Rcl 29 R3e2 Nc6 30 Rc2 Rel 31 Rfe2 Ral 32 Kg3(L) Kg7 33 Rcd2 Rfl 34 Rf2 Rel 35 Rfe2 Rfl 36 Re3 a6 37 Rc3 Rel 38 Rc4 Rfl 39 Rdc2 Ral 40 Rf2 Rel 41 Rfc2(M) g5 42 Rcl Re2 43 Rlc2 Rel 44 Rcl Re2 45 Rlc2 Drawn.

(Notes by former world champion Vasily Smyslov, translated from "Sovetsky sport", Aug. 24, 1972, pg. 4)

(A) Spassky has succeeded in bringing out weaknesses in the challenger's opening armory. Sharp Sicilian Defense variations are no longer the reliable weapons they once were in Fischer's hands, and there is no time for him to work on them during the match. Understandably, then, Spassky again prefers to start the game



Position after 13...Bb3.

with 1 e4.

(B) For the first time in the match the challenger calls upon a defense named after the Soviet master Ufimtsev. Leading to a complex game with chances for both sides, this opening plan has become quite popular in recent years.

(C) Taking control of the center with pawns marks one of the sharpest and most promising continuations here. In fact, Fischer usually plays this line as White himself.

(D) Declining well analyzed paths beginning with 6 Bb5ch Bd7 7 e5 in favor of a quieter set-up.

(E) Considered more precise than 10...Nc6, which can be met by 11 h3 with good prospects for White.

(F) Accurately appraising Fischer's game psychology, who normally will not refuse a sacrifice that poses no immediate direct threats. Giving up a pawn allows Spassky to seize the initiative and prepare a king-side attack.

(G) If 15...Ne5, then 16 Qf2! Bf3 17 gf, and White's bishops are very dangerous.

(H) More natural would be 18...Qc6, attacking the center pawn. Now Black experiences difficulties.

(I) Fischer leaves his rook in take to avoid the pitfalls of 21...Rfc8 22 fg hg 23 g4, threatening g5.

(J) Black has a pawn and a solid position for the exchange, which is almost sufficient compensation, although White still retains some winning chances.

(K) A small inaccuracy. Better to play 26...Rc2 first, as 27 e5 Nd5 28 ed Ne3 29 de Rclch 30 Kh2 Ng4ch 31 Rg4 Rel gives an equal game.

(L) White moves his pieces non-committally. Apparently, Spassky believed it necessary to adjourn the game for detailed analysis.

(M) The sealed move.

\* \* \*

## Capps Memorial Tournament

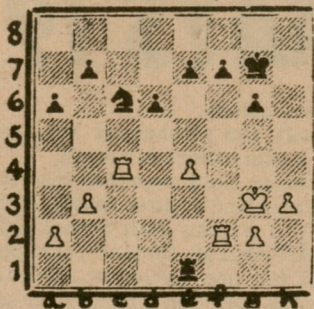
The second annual Carroll M. Capps Memorial Chess Tournament, a CAL-Point and USCF rated event, will be directed by Roy Hoppe, Oct. 21-22-23, at the Mechanics' Institute Chess Club, 57 Post

St., 4th floor, San Francisco. Two rounds each day at 1 p.m. and 6 p.m. will be played at 40 moves in 2 hours. The guaranteed prize fund totals \$1,130 and will be increased if number of entries permits. Entry fee is \$17 with final registration at the tournament site from 11 a.m. to 12:30 p.m., Saturday, Oct. 21. Please bring sets and clocks if you have them.

\* \* \*

## OAKLAND CHESS CLUB REVIVED

The Oakland Chess Club meets ever Friday at 7p.m. at the Franklin Elementary School, 10th & 15th Streets, in Oakland. Players of all strengths wanted and welcome, especially masters and ladies! Dress informally, bring sets and CLOCKS if you can and maybe even refreshments (coffee, tea, etc.) to share. See ya' soon! (The address of groovy Mr. Kenn Fong, club member, is 865 Rosemount Rd., Oakland CA 94610, in case you want to get in touch -- Jude)



Position after 40...Rel.