

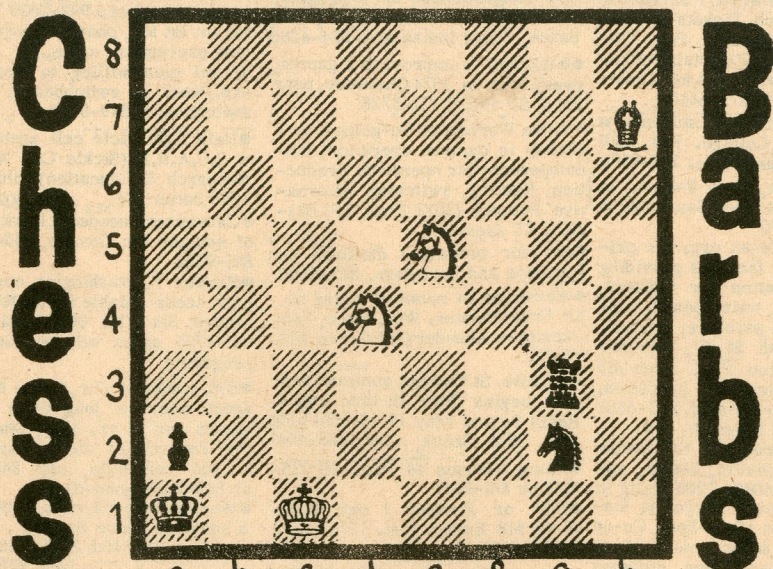
DIAGRAM NO. 18: You are White and in great difficulties in this Acers Chess Challenge position. Can you save the game? Complete analysis, please, and send to the groovy Barb offices for checking. 150 correct solutions earn you a Barb Gold Star and boku goodies. Act now. Solve! We defy you.

NEWS: A top team of chess analysts worldwide will be featured in the Berkeley Barb during the 1972 World Championship Chess Match, Boris Spassky (Leningrad) vs. Robert Fischer (Los Angeles). Eyewitness accounts in three languages will be translated within 24 hours of publication. I suggest you stay tuned because our coverage is going to stop traffic, baby bluel Starts in Reykjavic, Iceland, July 2nd and what will happen nobody really knows. IF the match is completed, it will be remarkable indeed. We can only wait. The greatest match of all time draws near...we hope!

GAME: All notes by grandmaster Lubomir Kavalek.

* * * * *

White: Albert Horowitz. Black: Lubomir Kavalek. 1972 US Zonal, New York City. Sicilian Defense, Najdorf Variation 1 e4 c5 2 Nf3 d6 3 d4 cd 4 Nd4 Nf6 5 Nc3 a6 6 Be2 e5 7 Nb3 Be7(A) 8 0-0-0 9 f4 Qc7 10 Qel(B) b5 11 Qg3(C) Kh8! 12 fe de 13 Bg5 Nbd7 14 Qh4 Bb7 15 Bd3 Rae8! 16 Nd5? (D) Bd5 17 ed e4! 18 Rad1?(E) ed 19 Rd3 Qc2 20 Rc3 Qg6 21 Rg3 Qe4



by Jude Acers (US senior master)

22 Qe4 Ne4 23 Be7 Ng3 24 Rel Nf5 on top in both cases.
25 White resigns. * * * * *

(A) 7...Be6 is also played. (B) 10 a4! (C) Horowitz's idea is 12 fe de Bh6. (Acers note: 13...Ne8 would be answered by 14 Nd5! with a crush.) (D) Better is 16 Rf3! with the idea of 16...b4? 17 Rh3! bc 18 Rfl! cb 19 Nd2, intending dangerous sacrifices at f6. (E) 18 Be4? Bc5ch (Acers note: 18 Kh1 Re4 wins a piece.) or 18 Be2 Nd5 with Black

SPECIAL NOTE: Readers are reminded that the Lone Pine International master tournament in California has a tournament book by US masters Dennis Waterman and John Grefe. It contains virtually every important game of the 1972 event with comments on critical games by Waterman or Grefe. More than 100 games included and

a must buy volume for all area players and chess fans. \$2.60 postpaid from John Grefe, 2206 Haste St., Apt. 19, Berkeley CA 94704.

QUESTIONS YOU ASK JUDE ACERS: Q. What is Fischer's greatest strength? A. Enormous fighting spirit, coupled with stamina and a deep interest in chess. He studies game history, man! Q. Who do you consider the ten best players in history? A. 1. Botvinnik, 2. Alekhine, 3. Keres, 4. Spassky, 5. Tal, 6. Fischer, 7. Lasker, 8. Schlechter, 9. Capablanca, and 10. Smyslov. Q. Who do you rank in the top six players in the world today? A. 1. Fischer, 2. Spassky, 3. Petrosian, 4. Korchnoi, 5. Botvinnik, 6. Portisch and Keres. Botvinnik is retired from active play, however. Q. Who is the best opening theoretician today? A. Fischer, with Portisch right on his heels and not so specialized. By the way, both Browne and I think Portisch is a super worker! Q. Who is the best endgame player in history? A. Botvinnik. Q. Fischer says he is not a chess genius. Who in chess history were natural genius players? A. Morphy, Capablanca, Reshevsky and Pillsbury. All were lighthearted about chess and did not devote themselves to playing in a professional manner like Fischer does. Fischer loves chess, understands its intricacies and uses his enormous interest in his own game to improve constantly. Geniuses

are notoriously lazy in the world of chess. The drones achieve. Q. Did you predict Fischer's series of victories last year? A. No, I never thought he'd make it to the final match with Spassky. Q. I want to join the US Chess Federation and have a national chess rating. How does one do this? A. First send \$10 to the US Chess Federation, 479 Broadway, Newburgh, NY 12550, and things begin to pop. You get a national rating by playing in one of hundreds of USCF tournaments each year. If you're not sure, send a postcard to the above address for a FREE SAMPLE COPY of their magazine, "Chess Life & Review," which publishes the ratings every three months. Incidentally, the games in the magazine are usually worth a close look. Membership is \$10 a year and \$5 for little tots. It's worth it easily. "Chess Life & Review" tells you long in advance, as a rule, about every tournament in the US that you can play in. Also USCF has family rates, too. BELIEVE ME, you can play in good chess tournaments with almost no expense right in the Bay Area. Why not look into the fascinating chess world now?

WHERE TO PLAY CHESS: Berkeley Central YMCA, Fri., 7:30pm; Hardcastle Coffee Shop, 2516 Telegraph, all hours; in Oakland, East Asia Book & Game Center, 5897 College, 6 pm. to midnight; S.F. Mechanics' Institute Chess Room, 57 Post, 4th floor, all hours.