

CHESS BARBS

by Jude Acers (U.S senior master)

CANDIDATES' MATCHES:

Draws don't count! All of the games so far in the Karpov-Polugaevsky, Petrosian-Portisch and Korchnoi-Mecking matches have been drawn without incident. Only former world champion Boris Spassky has forged ahead versus US champion Robert Byrne, winning two big ones after a couple of hand-to-hand draws. The first player to score three full points advances to the semi-final stage next summer.

White: Boris Spassky. Black: Robert Byrne. San Juan, 1974. 2nd Match Game. Sicilian Defense 1 e4 c5 2 Nf3 d6 3 d4 cd 4 Nd4 Nf6 5 Nc3 a6 6 Be2 e5 7 Nb3 Be6 8 0-0 Nbd7 9 f4 Qc7 10 a4 Be7 11 a5 0-0 12 Kh1 Nc5! 13 Nc5 Qc5 14 f5 Bc4 15 Bc4 Qc4 16 Bg5 Rfd8 17 Re1 Rac8 18 Re2 Qb4 19 Qc1 h6 20 Bf6 Bf6 21 Ra4 Qc5 22 Qd1 b5 23 ab Qb6 24 Qa1 Rc6 25 Nd5 Qb5 26 Rf2 Rdc8 27 Ra5 Qc4 28 Qe1 Bh4 29 g3 Bd8 30 Ra1 a5 31 c3 Rb8 32 Qe2 Qe2 33 Re2 Kf8 34 Kg2 Rb3 35 Kf3 Rc8 36 h4 Rcb8 37 Ra2 Bb6 38 g4 f6 39 Rg2 Bc5 40 g5! hg 41 hg fg 42 Nc7 g6 43 fg? (Missing 43 f6!) Kg7 44 Rg5 Bb6! 45 Nd5 Bc5! 46 Rg2 R8b7! 47 Ne3 Be3 48 Ke3 Reb5 49 Kd3 Rb8 50 Ke2 R8b6 51 Kd3 Rb7 52 Ra4 Rb2

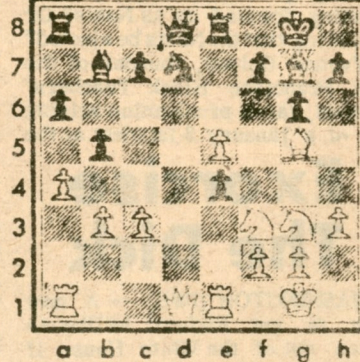
53 Rb2 Rb2 54 Ra5 Rb6 55 Kc4 Rc6ch Ke8 60 Ra5 Rb3 61 Ra6 Kf7 ("Whatever happened to Andre Philidor?" asked Julio Kaplan.) 62 Ra7ch Ke8 63 Re7ch Kf8 64 Rcy Rb6ch 65 Kd7 Kf7 66 e5 Re6 67 Rc5 Ra6 68 Rb5 Re6 69 Ra5 Rb6 70 Ra8 Rb7ch 71 Kd6 Rb6ch 72 Kc5 Rb1 73 Drawn on Spassky's offer.

* * * * *
Is Spassky's queen sac for two minor pieces really sound? Robert Byrne thought so:

White: Robert Byrne. Black: Boris Spassky. San Juan, 1974. 3rd Match Game. Ruy Lopez 1 e4 e5 2 Nf3 Nc6 3Bb5 a6 4 Ba4 Nf6 5 0-0 Be7. 6 Re1 b5 7 Bb3 d6 8 c3 0-0 9 h3 Nb8 10 d4 Nbd7 11 Nbd2 Bb7 12 Bc2 Re8 13 Nf1 Bf8 14 Ng3 g6 15 b3 Bg7 16 a4 d5 17 de Ne4 18 Be4 de 19 Bg5 19...del! (Electric shock treatment! Spassky reportedly took 30 minutes to find this move and work out the supporting variations over the board. Rather than submit to the combined weight of Black's deadly...fg, ...Ne5, ...Nf3 and, if needed, ...Bf3, Byrne decides to climb back into his chair and return the queen late for a passed pawn.)

20 Bd8 Rad8 21 ab Ne5 22 ba Rdl 23 Redl Ba8 24 gf Nf3ch

Position after 19 Bg5



25 Kf1 Bc3 26 Racl Nd2ch 27 Kgl Ba5 28 b4 (Best) Nf3ch 29 Kfl Nh2ch 30 Kgl Nf3ch (Regaining some of that lost half-hour on the clock.) 31 Kfl Bb6 32 Rc2 Nh2ch 33 Kgl Nf3ch 34 Kfl Kf8 35 Ne2 Nh2ch 36 Kgl Nf3ch 37 Kfl Be4 38 Ra2 Nh2ch 39 Kgl Nf3ch 40 Kfl Nh4. 41 Nf4 Bf3 (The sealed move.) 42 Rd3 g5 43 Ne2 Bg2ch 44 Kel Nf2ch 45 Kdl Ne5 46 Rc3 Bd5 47 Rd2 Bc4 48 Ra3 Ra8 49 f4 gf 50 Nf4 Ra6 (That just about wraps it up, except for reaching time control.) 51 Ra6 Ba6 52 Nd5 Bc4 53 Nb6 cb 54 Rd6 b5 55 Kd2 Ng6 56 Ke3 h5 57 White resigns.

* * * * *
Byrne snipes at a pawn (19...

Ne4) and winds up minus the exchange with a prayer... At game's end he had only four minutes left on his clock.

White: Boris Spassky. Black: Robert Byrne. San Juan, 1974. 4th Match Game. Sicilian Defense 1 e4 c5 2 Nf3 d6 3 d4 cd 4 Nd4 Nf6 5 Nc3 a6 (Where have I seen this before?) 6 f4 (A little surprise, maybe?! e5 7 Nf3 Nbd7 8 a4 Qc7 9 Bd3 b6 10 0-0 g6 11 Qe2 Bb7 12 Bc4 Bg7 13 Ng5 0-0 14 f5 gf 15 Rf5 h6 16 Nh3 b5 17 ab ab 18 Ra8 Ra8 19 Bb5 Ne4? 20 Ne4 Be4 21 Qe4 Ral 22 Rfl Rcl 23 Rcl Qc4ch 24 Nf2 Qb5 (Black has given up the exchange, but he has not sacrificed it!) 25 Rdl Nf6 26 Qa8ch Bf8 27 Qf3 Be7 28 b3 Kf8 29 Ne4 Black resigns (Powerfully punished by Spassky. The dam has burst...).

\$5,000 PRIZE FUND: 1st California People's Chess Festival, sponsored by the Calif. State Chess Federation and the Chabot Chess Club. Feb. 16-18, 1974: Rds 1 & 2, Sat. Feb. 16th, noon and 6 p.m.; Rds 3 & 4, Sun. Feb. 17th 11 a.m. and 5 p.m.; Rds 5 & 6 Mon. Feb. 18th, 11 a.m. and 5 p.m. Chabot College Student Center, 25555 Hesperian Blvd., Hayward. Six round Swiss in six

sections. Open Section: (open to all) 1st \$750, 2nd \$400, 3rd \$250, 4th \$100. Expert Division: 1st \$350, 2nd \$250, 3rd \$100.

Class A: 1st \$350, 2nd \$250, 3rd \$100. Class B: 1st \$350, 2nd \$250, 3rd \$100. Class C: 1st \$350, 2nd \$250, 3rd \$100. Class D, E & Unrated; 1st \$350, 2nd \$250, 3rd \$100. Trophies to the top winner in each section. Any player may enter a higher rated section (Prizes based on 300 entries). Entry fee is \$20 if mailed by Feb. 10; later, \$25. Juniors under 18, \$5 less. USCF membership (\$10 reg, \$5 jr.) and CSCF membership (\$5) required. \$5 reduction for those playing in their first USCF tournament and for Chabot students. Registration ends 9-11 a.m., Feb. 16th. Tournament Director is Guthrie McClain. His decision is final. Please bring sets and clocks (40 moves in 2 hours, 15 moves in 45 minutes thereafter). For further inquiries phone 843-2875. Mail advance entry (check or money order) to Calif. State Chess Federation, 2228 #2 Dwight Way, Berkeley, Calif. 94704.

(Belated credit: The photo of Walter Browne in Chess Barbs two weeks ago was by Ron Chan.)