

CalChess REPORT

• February 1991 •

CALCHESS PROGRESS

In the ten weeks since the decision to revive the state organization was taken, at the December meeting, there has been considerable progress.

More than thirty memberships were sent in even before it was publicly announced that **CalChess** is being renewed and revived. In February, when the **California Chess Journal** became the official organ of **CalChess**, conversion of its subscribers added a solid block of over two hundred members. There were approximately thirty new members enrolled at the first **CalChess** discount tournament, the People's in Berkeley. Thanks to the support of club and tournament directors state-wide, and to plugs in George Koltanowski's column in the Chronicle, new memberships come in every day. Membership now approaches 300.

There are a series of **CalChess** discount tournaments over the next few months, starting with the 27th LERA Sunnyvale Class Championships next weekend, March 2-3, that will continue the steady increase.

With this impressive start, we are well on our way to accomplishing **CalChess'** goal of reinvigorating the chess scene in Northern California, building a strong organization and offering more and better tournaments to our members.

PEOPLE'S TOURNAMENT RESULTS

The 18th Annual People's Tournament, held in Berkeley February 16-18, drew 216 players. The winners were:

Open Section: IM Marc Leski (2538), IM John Donaldson (2519), IM John Grefe (2434), Vladimir Strugatsky (2498), and Larry Remlinger (2404), all with 4.5 points. U2300: John Bidwell (2287), John Pope (2281), and Erik Ronneberg (2250) with 4.

Expert Section: Zoran Kurtovic (2037), Emmanuel Perez (1776) with 5 points; Matvey Temkin (2156) with 4.5.

A Section: Enoch Cruz (1868) with 5.5 points; Jeff Van Order (1856) with 5; Stephen Homan (1845) with 4.5.

B Section: David Goldfarb (1774) with 5.5 points; Bruno Bier (1734) and Robert Vaccarezza (1630) with 5.

Reserve Section: Bruce Bell (1597), Lokesh Sikaria (1597), and Francisco Carrillo (1543) with 4 points. U1400: Robert McClenaghan (1321), 3.5.

The Beginners Tournament was won by Henry Hsieh (1330) on tiebreaks over Jacob Gurwitz (1424), both with 4 points, followed by Eric Baudry (1361) with 3. "Under 13" winner was Damon Mosk-Aoyama (1440) with 3 points, and "Under 11" winner was Jordy Mont-Reynaud (1132) with 2.

The tournament was very ably directed by Alan Glasscoe, assisted by Don Shennum and Peter Yu. Credit for overall organization goes to Peter Yu.

PAN PACIFIC GRANDMASTER EVENT FEATURES MIKHAIL TAL

The second PanPacific International Grandmaster tournament will be held in San Francisco, at the Financial District Holiday Inn on Kearny Street, from Saturday, March 2, through Thursday, March 14.

The principal attraction is the participation of Mikhail Tal, former champion of the world. There are also GMs Christiansen, Browne, Fedorowicz, Wolff, Benjamin, Ftacnik, Rogers, Torre, Adianto, and the Hungarian phenomenon, GM Zsuzsa Polgar. The tournament will be directed by International Arbiter GM George Koltanowski, assisted by Max Wilkerson.

Although this is the first-ever international grandmaster tournament in S.F., there has been very little publicity. But don't let this once-in-a-lifetime opportunity slip away; let as many club members as possible know about the only GM tournament that may be held in S.F. in their lifetime. The games begin at 5 p.m., the admission fee is \$5.

From time to time Bill Goichberg, who runs the Continental Chess Associations, publishes in Chess Life, as a public service, a list of players who have had outstanding results in major class tournaments, and assigns ratings to be used in future CCA tournaments. Use of these lists has become standard with tournament directors nationwide; this practice is extremely popular with class tournament players. Here is the most recent list (Chess Life 12/90), in the hope that it will prove useful to Northern California directors. Adoption of this practice is highly recommended for tournaments that offer sizable class prizes. Notice should be given in tournament announcements and flyers, by including the phrase "CCA minimum ratings and director's discretion used."

CCA MINIMUM RATINGS 12/90

<u>PLAYER</u>	<u>RATING</u>				
Abanilla, H.	1900	Hoyos, L.	2200	Sendur, O.	1800
Aguiar, R.	1900	Ilario, M.	2000	Sipalia, J.	2400
Amirante, R.	1500	Inocencio, E.	2200	Stevens, Jason	1900
Angel, A.	1900	Jollibert, D.	2300	Stone, Randy	1700
Angulo, A.	2200	Kauffman, Robert	1400	Suan, Quek	2200
Aramun, J.	2000	Kolker, P.	2100	Suzuki, W.	2000
Arana, L.	2100	Kotliar, M.	2400	Terrell, Lloyd	1800
Arnold, Matthew	1500	Laird, Donald	1800	Tidoy, P.	2300
Arrizon, M.	1900	Lawrence, Mark	2100	Traynor, D.	1700
Atotubo, R.	2400	Letner, Bernie	1900	Triumfo, F.R.	1700
Baligad, J.	2300	Luis, Alejandro	2000	Tuttle, Dale	1900
Bayati, R.	2000	Magallona, M.	1800	Vasic, L.	2000
Behling, S.	1900	Maldonado, Oscar	2200	Veksler, B.	2100
Bhuyian, M.	2000	Martel, J.	2100	Verkhovsky, A.	2200
Bridgeforth, R.	1700	Martinez, Salvador	2000	Vojvodic, D.	2300
Buslk, O.	1800	McKernan, T.	1900	Vucic, M.	2450
Cajina, V.	1900	Mejia, Domingo	1600	Vukoje, A.	1900
Campbell, Anthony	2200	Melbourne, K.	1900	Walker, Al (WA)	2000
Castaldo, A.	2000	Militar, Edsel	1700	Wlodarczyk, J.	1500
Castano, G.	2000	Mislang, H.	2000	Yee, Patrick	2000
Celestin, R.	1400	Mrkovic, M.	1900	Yumol, R.	2300
Christian, Garrett	2000	Muginshteyn, Ed	2100	Zamora, E.	2200
Chu, Joel	2300	Munz-Abraham, M.	1900	Zeljko, I.	1700
Conlogue, W.	1600	Nachowitz, Dave	1900	Zivkovic, N.	2200
Cordova, R.	1800	Ochoa, Jason	2000	Zivotov, B.	2200
Costeff, G.	2000	Paloma, R.	2300		
Cruz, Enoch	2000	Pardel, D.	1900		
David, Jollibert	2300	Perez, Emmanuel	1900		
DeAsis, Rex	2300	Pina, Antonio	2200		
Dekhtyar, Boris	2200	Pincus, A.	2000		
Diaz, Carlos A.	2100	Porrata, Felix	1900		
Eisen, Lewis	2000	Potentini, S.	2000		
Eng, Hon-Ming	1800	Prudente, E.	2300		
Faulkner, F.	1600	Rafael, V.	2200		
Fierstein, R.	1700	Raic, M.	1800		
Fractman, G.	2100	Rasic, A.	2200		
Fuentes, Romulo	2200	Ravikovich, F.	2000		
Fuentes, Virgilio	2000	Redor, M.	2000		
Gabriel, R.	1800	Repetto, R.	2100		
Garrett, Benjamin	1700	Rhinesmith, Michael	2000		
George, Angelo	2000	Riggs, Brent	1600		
Gonzalez, Federico	2300	Roa, Ivan	2000		
Gorelik, D.	2100	Saavedra, Carlos	2200		
Green, Daniel	2200	Sabalo, A.	2000		
Guinto, W.	2300	Saints, K.	2000		
Harris, David	2200	Samonte, Seb/Jun	2000		
Howard, John (CA)	1900	Schleinkofer, K.	2200		
		Sendur, K.	2000		

27TH LERA CLASS CHAMPS 3/2-3/3

The next tournament to encourage membership in **CalChess** is at LERA, March 2-3. These LERA tournaments are a Bay Area tradition, and chief director Jim Hurt has been running them for longer than many USCF members have been alive.

I am enclosing a flyer for the tournament in the hope that you will bring the tournament to the attention of your members (see reverse side of this sheet). There was no announcement in the Tournament Life section of the March Chess Life, so some of your club members may not be aware of the event. Chess players in our area should refer to the **California Chess Journal** when they want to know if there is a tournament coming up, because the **California Chess Journal** has by far the most complete, current and accurate listings for area events. But right now, most just look at Chess Life, and some players may be unaware of the LERA event (despite a couple of large mailings). Please bring it to their attention; these large traditional tournaments are a valuable part of Northern California chess, and deserve our support.

CalChess 1991 CLASS CHAMPS

John Barnard recently announced confirmation that the "Northern California State Open and Class Championships" will be held Labor Day, August 31-September 2, at the Kolty Club in Campbell, with a guaranteed prize fund of \$6000. This tournament will be the officially sanctioned **CalChess** state championship, awarding titles in all classes. The annual **CalChess** membership meeting will be held in conjunction with the tournament.

An apparent conflict on the Labor Day weekend has been resolved with the gracious cooperation of Francisco Sierra, director of the Santa Clara club, who, at the **CalChess** meeting in February, agreed to reschedule his event to allow the state championship to run unopposed. **CalChess** expresses its gratitude and

appreciation to Mr. Sierra for his support and cooperation.

WILKERSON SELECTED RVP

At the February **CalChess** meeting, the members nominated Max Wilkerson, Director of the Mechanics Institute Chess Room, to be Northern California's USCF Regional Vice President for the term August 1991-July 1994. His name will appear on the ballot at the USCF annual membership meeting at the U.S. Open in Los Angeles in August, to be voted on by the delegates. In the past, nomination by the state affiliate has been tantamount to election. Max will succeed Peter Yu. Under USCF bylaws, RVPs serve for one term only and cannot succeed themselves.

UPCOMING EVENTS

The Walnut Creek Chess Club is holding its monthly "Contra Costa County Five-Minute Championship" on the last Tuesday of the month, February 26, at 7 p.m. at the Walnut Creek Civic Center, Civic at Broadway. Speed players welcome! (Info: Clarence Lehman, 415-946-1545)

The mighty Livermore Club, led by Charles Pigg and Don Wolitzer, has put a hammerlock on the November 2-3 weekend for their "8th Livermore Open." Both the "Western States Open," a \$10K held in Reno by Jerry Weikel, and the U.S. Class Championships, a \$20K hosted in San Francisco this year by Bill Goichberg, have moved their dates to avoid a conflict with Livermore. Weikel is now taking October 18-20, Goichberg is taking September 27-29. Good work, guys!

TOM DORSCH
President, CalChess
P.O. Box 3294
Hayward, CA 94544



TWENTY-SEVENTH ANNUAL 1991 LERA PENINSULA CLASS CHAMPIONSHIPS

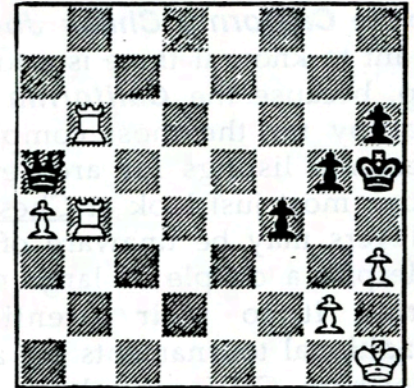


- DATE:** Saturday, and Sunday, March 2 and 3, 1991.
- PLACE:** LERA Auditorium, corner of Mathilda Ave. & Java St., Sunnyvale (take Bayshore Freeway to the North Mathilda offramp; then go seven blocks north on Mathilda to Java St.).
- DIRECTOR:** Jim Hurt assisted by Ted Yudacufski (National Tournament Director) of Monterey.
- TYPE:** Four-round Swiss with six separate divisions, each division with its own prizes. In pairing an odd-numbered group, we promote a high player from the next highest group to yield an even number.
- PRIZES:**
- | Division | Open | Expert | A | B | C | D/Unrated |
|--------------|-------|--------|-------|-------|-------|-----------|
| First Prize | \$500 | \$400 | \$350 | \$300 | \$200 | \$90 |
| Second Prize | \$300 | \$240 | \$210 | \$180 | \$120 | \$60 |
| Third Prize | \$200 | \$160 | \$140 | \$120 | \$ 80 | |



The prize fund is based on 160 entries. If the entries exceed 160 players, then the prize fund will be increased and if the entries are less than 160 the prize fund will be decreased. A player can play up any number of divisions; exception: an unrated player can play up only into the Open or Expert division. A total of six brilliancy prizes will be awarded, one for each division.

SCHEDULE:	ITEM	STARTING TIME	TIME CONTROL
	Registration	8 to 9 AM Saturday	
	Round One	10:30 AM Saturday	45 moves in 2 hours;
	Round Two	3:00 PM Saturday	15 moves in 30 minutes
	Round Three	9:30 AM Sunday	then 10 moves in
	Round Four	2:30 PM Sunday	10 minutes



White to move and win

ENTRY FEES: Mail: The entry fee for the Open or Expert division is \$35, for the A division is \$30, and for the B or C or D/UNR division is \$25, if mailed by February 27. If paid Saturday morning, all entry fees will be \$5 more.



Note: Registering players on the first day of the tournament is time consuming and often delays the start of the tournament. Please register by mail using the form below (you save \$5 by doing so).

SNACK BAR: Food and refreshments available at the LERA snack bar.

NEXT EVENT: The next LERA chess tournament will be held on the Memorial Day weekend, May 26, 27, 28.

All players must be USCF members or become members at the tournament.

3-91

Pay LERA \$10 for your Cal Chess membership and you can deduct \$4 from your entry fee.

NAME _____ PHONE _____ USCF RATING _____
 STREET _____ CITY _____ ZIP _____

Name and date of the last tournament you played in: _____ Cal Chess membership \$10

USCF Identity No. _____ Exp. Date _____ USCF dues: \$26 adult and \$13 under 18.

Entry Fee: * Open or Expert division is \$35, A division is \$30, and the B or C or D/UNR division is \$25 (Circle your division).

*If mailed by February 27 otherwise entry fees are \$5 more. Make check payable to LERA Chess Club.

MAIL TO: Jim Hurt, LERA Chess Club, P.O. Box 60451, Sunnyvale, CA 94088.

For information, call Jim Hurt (916) 525-7912 or Ken Stone (408) 742-3126.

Amount of Check _____