

*By George Koltanowski*

- |                  |         |
|------------------|---------|
| No. 32—31.P-K7ch | K-B2    |
| No. 33—29.B-Q5   | 30.K-Q2 |
| No. 35—20.BxP    | P-B4    |
| No. 47—20.QxQ    | KRxQ    |
| No. 48—20.Q-KN4  | P-B4    |
| No. 117—9.NB3    | N-K2    |

### GAME NO. 931

Played in the San Francisco Spring Chess Festival, 1958.

White: David Krause. Black: Art Wang.

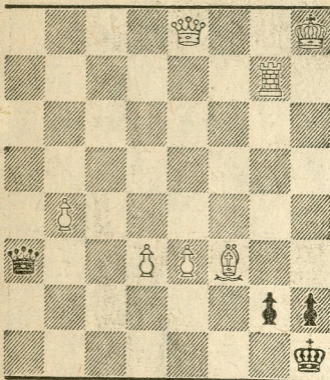
### FRENCH DEFENSE

- |            |           |           |          |
|------------|-----------|-----------|----------|
| 1.P-K4     | P-K3      | 16.K-N1   | QxP!     |
| 2.N-QB3    | P-Q4      | 17.NxP    | B-KB3(g) |
| 3.P-O4     | N-KB3     | 18.NxPch! | QxN      |
| 4.B-KN5    | B-QN5(a)  | 19.RxB!!  | KxR(h)   |
| 4.B-KN5    | B-QN5(a)  | 20.QxPch  | B-K2     |
| 5.P-K5     | P-KR3     | 21.R-Q3ch | Q-Q3(i)  |
| 6.PxN(b)   | PxB       | 22.RxQch  | KxR      |
| 7.PxP      | R-N1      | 23.B-B4   | KR-K1    |
| 8.P-KR4    | PxP(c)    | 24.QxPch  | K-B2     |
| 9.Q-R5     | Q-B3      | 25.B-N5   | QR-Q1    |
| 10.N-B3    | N-B3(d)   | 26.P-QB3  | R-Q8ch   |
| 11.RxP     | QxNP      | 27.K-B2   | R-Q7ch   |
| 12.O-O-O   | B-Q2      | 28.K-BI!! | B-N4     |
| 13.N-K5(e) | NxN       | 29.QxR    | R-Q1ch   |
| 14.PxN     | B-K2      | 30.K-B2   | RxQ      |
| 15.R-R3    | B-N4ch(f) | 31.BxR(j) |          |

(a) 4 . . . B-K2 is also playable. (b) More usual is 6.B-Q2,BxN; 7.PxB, N-K5; 8.B-Q3, etc. (c) Does not care for the eventual advance of the KRP. (d) Prefer 10 . . . P-QB4 here. (e) Gives Black no respite! (f) The gain of the King's pawn leads to more trouble than Black anticipated. Krause plays the whole game in masterly fashion! (g) Must have counted on this reply. He threatens QxP mate, wishes to exchange Queens, etc. He is in for a real nasty surprise. (h) Forced. (i) Best. The rest is easy. (j) Black resigned soon afterwards.

Solution to yesterday's problem: 1.N-B2.

### PROBLEM BLACK: 4



**WHITE: 7**

White to play and mate in three moves. (SOLUTION TOMORROW).