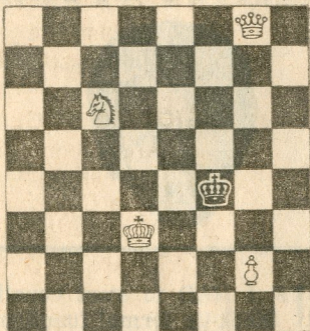


Chess

By George Koltanowski

PROBLEM

By J. Aizikowicz, Haifa, Israel.
First Publication.



3

White to play and mate in three moves. Solution tomorrow.

Solution to yesterday's problem: 1.R-R6, K-Q4; 2.N-B7, P-K4; 3.R-Q6 mate. Mr. Aizikowicz is very active in the Braille World Chess Federation, being blind himself.

One of the decisive games by the winner of the Brazos Chess Tournament:

White: Eric Bone. Black: Ray Schutt.

1.P-K4	P-QB4	19.K-N1	B-Q2
2.N-QB3	N-QB3	20.B-R3	P-N5
3.P-N3	P-KN3	21.P-B4	B-R5
4.B-N2	B-N2	22.QR-KB1	B-B6
5.P-Q3	P-Q3	23.Q-B1	B-K4
6.B-K3	P-K4	24.BxN	RxB
7.N-Q5	N-B3	25.N-B4	R-K2
8.NxNch	BxN	26.N-Q5	R/2-N2
9.P-KR4	N-Q5	27.B-B4	B-B7ch
10.P-QB3	N-K3	28.QxB	P-N6
11.N-K2	O-O	29.PxP	RxP
12.Q-Q2	R-K1	30.BxB	PxB
13.O-O-O	R-N1	31.Q-B2	R/1-N2
14.P-R5	P-KN4	32.R-R2	R-R6
15.P-R6	P-N4	33.N-K7ch	RxN
16.P-KB4	KPxP	34.PxR	R-N2ch
17.PxP	Q-R4	35.K-R2	Resigns
18.PxP	B-R1		