

JUN 17 1955

Chess

By *Koltanowski*

- No. 258—27.KxB BxP
- No. 262—27.K-N3 P-B7
- No. 269—24.K-B3 P-N4
- No. 270—27.K-K2 R-Q5
- No. 278—24.B-K3 P-N3
- No. 279—25.R-Q2 RxR
- No. 228—Thanks for resigning.

IMPORTANT NOTICE: Sunday June 19, HAYWARD CHESS FESTIVAL. Bring board and men. You can enter on the day proper. Starts 10 a. m. at the Airport Park, 21701 Hesperian boulevard, Hayward.

GAME NO. 156

Played by correspondence, 1955.

White: J. Heuberger. Black: A. Hostellier.

RUY LOPEZ

- | | | | |
|----------|---------|------------|------------|
| 1.P-K4 | P-K4 | 18.P-K6 | PxB |
| 2.N-KB3 | N-QB3 | 19.P-N4(b) | B-R3 |
| 3.B-N5 | P-Q3 | 20.K-N1 | B-N2 |
| 4.P-Q4 | B-Q2 | 21.R-Q3 | P-QR3 |
| 5.N-B3 | N-B3 | 22.P-QR4 | P-Q4 |
| 6.BxN | BxB | 23.Q-N3 | P-Q5 |
| 7.Q-Q3 | P-QN3 | 24.P-K7 | R-Q3(c) |
| 8.B-K3 | N-Q2 | 25.P-N5 | PxP |
| 9.O-O-O | P-B3 | 26.PxP | B-K1 |
| 10.PxP | NxP | 27.N-K4 | R-Q2 |
| 11.NxN | BPxN | 28.Q-R4 | R-Q4 |
| 12.P-KB4 | PxP | 29.Q-R6ch | K-N1 |
| 13.BxBP | Q-Q2 | 30.R-R3 | RxPch |
| 14.KR-K1 | O-O-O | 31.K-B1 | B-QB3 |
| 15.P-K5 | Q-N5(a) | 32.N-B5 | Q-Q8ch(l) |
| 16.P-KN3 | P-KN4 | 33.KxQ | Resigns(e) |
| 17.Q-B4 | K-N2 | | |

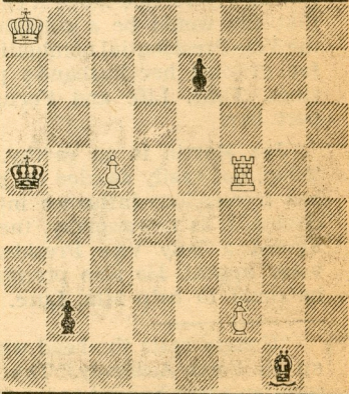
(a) Looks for counter-chances. (b) Bishop on QB6 is the target. (c) R-QR1 was best. (d) Q-R7ch and Q-R8ch and mate next move is threatened. Also P-K8-Qch. (e) After R-N8ch, 34.K-Q2 and Black cannot stop the threats.

Solution to yesterday's position: 1.R-K8ch.

DRAW

Study by Professor L. Prokes, Prague.

BLACK: 4



WHITE: 4

White to play and draw. (Solution Monday).