

By George Koltanowski

- | | |
|----------------|--------|
| No. 7—34.P-B4 | P-B4ch |
| No. 65—21.RxP | BxP |
| No. 68—22.K-B4 | R-Q4 |
| No. 98—13.QxN | O-O |
| No. 119—8.O-O | O-O |
| No. 168—6.PxP | NxPK4 |

IMPORTANT REMINDER: Have you sent your entry yet to the Holiday Special at the Sheraton-Palace Hotel, to be held on Saturday and Sunday, December 13-14, 1958? You can play in the five-round Swiss, starting Saturday, December 13, at 12:30 p. m. Entry fee \$3 to members of Chess Friends of Northern California. For non-members the entry fee is \$2 more. Send your entry indicating if you wish to play in A, B or C division, to Mrs. Virginia McGinley, 2763 Chelsea drive, Oakland, Calif.

GAME NO. 1047

A smash-up from the California Open, 1958.

White: Bersbach, Los Angeles.
Black: E. Osbun, Santa Rosa.

KING'S GAMBIT ACCEPTED

- | | | | |
|------------|---------|-------------|-------------|
| 1.P-K4 | P-K4 | 11.K-B2 | BxN |
| 2.P-KB4 | PxP | 12.Q-Q3(e) | B-K7 |
| 3.N-KB3 | P-KN4 | 13.Q-QR3(f) | BxPch |
| 4.P-KR4 | P-N5 | 14.K-K1 | Q-K5 |
| 5.N-K5 | N-KB3 | 15.Q-R4ch | K-Q1 |
| 6.B-B4 | P-Q4 | 16.N-Q2 | Q-K4 |
| 7.PxP | B-N2 | 17.N-K4 | QxN |
| 8.P-Q4 | N-R4(a) | 18.BxP | B-Q6 d. ch. |
| 9.NxNP(b) | N-N6 | Resigns(g) | |
| 10.R-R2(c) | Q-K2ch | | |

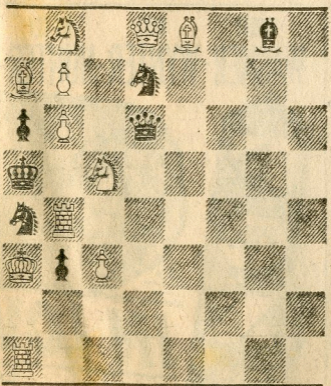
(a) Prefers to give the KNP and hold on to the KBP for the moment. (b) Too soon, now White gets into trouble fast. (c) If 10.R-R3, P-KR4. (d) Now follows the smash-up. (e) 12.QxB, BxP mate. (f) 13.Q-QB3, N-K5ch. (g) Mate in a few moves will follow. White will think twice before he plays another King's Gambit.

SOLUTION to Friday's problem: 1.B-Q5.

PROBLEM

By N. M. Weliky, USSR.

BLACK: 7



D-70

WHITE: 11

White to play and mate in two moves. (Solution tomorrow.)