

Chess

AUG.

191958

By George Koltanowski

- No. 59—22.Q-Q1 R-Q1
 No. 65—19.P-KB4 P-KB4
 No. 83—8.QxB N-B3
 No.167—3.N-B3 N-B3
 No. 168—3.B-B4 N-B3
 No. 169—3.B-N5 P-QR3

GAME NO. 980

Played in the Chess Friends of Northern California Championship, 1958.

White: H. Mondria. Black: J. Cleg-horn.

KING'S INDIAN DEFENSE

- | | | | |
|----------|---------|-------------|---------|
| 1.P-Q4 | N-KB3 | 11.B-QR3 | Q-R4 |
| 2.P-OB4 | P-KN3 | 12.O-N2(c) | P-K5(d) |
| 3.N-QB3 | B-N2 | 13.N-Q4 | R-Q1 |
| 4.P-KN3 | O-O | 14.P-QN4 | Q-B2 |
| 5.B-N2 | P-Q3 | 15.QR-Q1(e) | |
| 6.N-B3 | QN-Q2 | | N-K3(f) |
| 7.O-O | P-K4 | 16.P-K3 | P-B4(g) |
| 8.PxP(a) | PxP | 17.N4-N5 | Q-K2 |
| 9.Q-B2 | P-B3 | 18.PxP | RxR |
| 10.P-N3 | N-B4(b) | 19.RxR | B-Q2(h) |
| | | 20.P-B6 | Resigns |

(a) An old line hardly played nowadays. (b) Leads to difficulties that can be avoided by playing 10 . . . Q-K2. Taking the King's pawn would give the Black KB an active role. (c) Threatens P-QN4. (d) Well played. If now 13.N-K1,N-Q4; with counter-play. A very interesting position. (e) If 15.PxN,RxN; 16.N-N5,PxN; 17.QxR; N-Q2, etc. (f) And Black has saved the day and his K (night). (g) Might consider 16 . . . NxN or 16 . . . N-N4. (h) He is lost anyway.

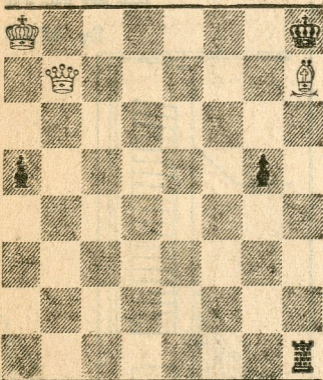
Solution to Friday's problem: 1.K-N4.

PROBLEM

By J. Aizimokowitz, Haifa.

ORIGINAL

BLACK: 4



D-5

WHITE: 3

White to play and mate in two moves. (SOLUTION TOMORROW.)