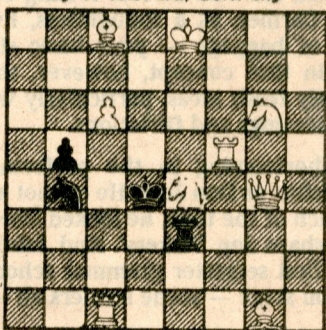


CHESS

BY GEORGE KOLTANOWSKI

PROBLEM By V. Wichard, Germany



White to play and mate in two moves.

THE PHILIDOR LEGACY

Here's an exciting game played in the last round of the Amateur Open in Burlingame in May.

White: Eric Nielsen (1902)

Black: Josefa Heifetz (unrated)

| | | | |
|----------|-------|-----------|-----------|
| 1. P-K4 | P-Q4 | 13. B-Q4 | NxB |
| 2. PxP | N-KB3 | 14. NxN | B-N3 |
| 3. P-QB4 | P-B3 | 15. 0-0 | Q-N3 |
| 4. PxP | NxP | 16. P-QN4 | QR-Q1 |
| 5. N-QB3 | P-K4 | 17. P-B5 | Q-KB3 |
| 6. P-Q3 | B-QN5 | 18. Q-R4 | QxN |
| 7. B-Q2 | 0-0 | 19. QxP | NxKBP! |
| 8. N-B3 | R-K1 | 20. B-B3 | N-Q8ch |
| 9. P-QR3 | BxN | 21. K-R1 | N-B7ch |
| 10. BxB | B-B4 | 22. K-N1 | N-R6 d.ch |
| 11. B-K2 | P-K5! | 23. K-R1 | Q-N8ch! |
| 12. PxP | NxP | 24. RxQ | N-B7mate |

From the first move on, Black plays it very sharply. She has learned her defense well. Quick development at the cost of a pawn. White's third move should have been B-N5ch, B-Q2; 4. B-B4, B-N5; 5. P-KB3, B-B4; etc.

If 13. QxQ, QRxQ; 14. R-QB1, NxB; 15. RxN, B-Q6; 16. N-N1, BxB; 17. NxN, N-Q5; 18. R-K3, N-B7ch; 19. K-B1, R-Q8 mates. After 14. NxN, instead of QxN, Black takes over completely and wins a piece. N-Q8ch, is a loss of two moves for Black but she does see the Queen's sacrifice that leads to the smothered mate! Heifetz scored 4 points out of 5 and won the first place trophy in the unrated section. Looks like the beginning of many other trophies for her!

SOLUTION to Problem: N-K5.