

AUG 21 1957

Chess

By George Koltanowski

No. 70—10.BxB PxB
 No. 73—6.N-B3 P-KR3
 No. 338—39.P-B4 P-N5
 No. 349—37.K-Q3 K-B4
 No. 398—36.K-N6 P-N3
 No. 407—26.KxR R-N1

GAME NO. 716

The following game virtually decided the U. S. Junior Championship of 1957. In only drawing Ramirez, who had drawn in the first round, never managed to catch up with the fleet-footed Fischer.

RETI OPENING

White: Gil Ramirez. Black: Bobby Fischer.

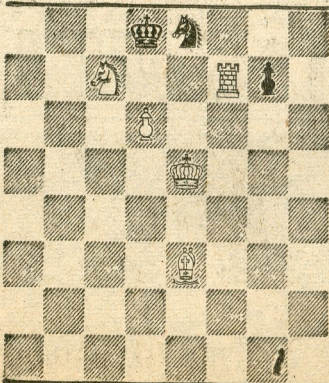
1.N-KB3	N-KB3	14.O-Q2	P-Q4
2.P-KN3	P-KN3	15.P-KN4	BxP(b)
3.B-N2	B-N2	16.PxB	NxNP
4.O-O	O-O	17.B-R3(c)	O-R5
5.P-B4	P-Q3	18.K-N2(d)	P-Q5
6.N-B3	P-K4	19.O-N5	QxQ
7.P-Q4	QN-Q2	20.BxO	P-B4
8.P-KR3	R-K1	21.BxN	PxB
9.O-B2	PxP	22.N-O5	NxN
10.NxP	N-N3	23.PxN	P-Q6
11.P-N3	P-B4	24.PxP(e)	BxR
12.KN-N5	P-OR3	25.RxB	R-K4
13.N-R3	B-B4(a)	Drawn (f)	

(a) Black has a well developed game and the two open Bishop's files look dangerous. (b) Typical Fischer. No retreat if a combination is possible! (c) Finds the safest way out of the many threats Black has. (d) Not 18.BxN, QxBch; 19.K-R1, R-K4, etc. (e) Prefers to give the exchange; he still would have two pieces for a rook. (f) White will have to lose the two Q pawns, and the draw is the safest bet by far.

SPECIAL COMPETITION YOU BE THE JUDGE

No. 48 by A. Hoberg, Munich, Germany.

BLACK: 3



D-36

WHITE: 5

White to play and mate in 2 moves. (Solution tomorrow.)

Solution to No. 47 is: 1.B-N3.