

Chess

MAY 2 1957

By George Koltanowski

- No. 328—31.K-B3 K-B4
- No. 330—40.K-K3 R-N5
- No. 331—41.R-R3 K-N2
- No. 408—27.RxR QxR
- No. 420—26.N-K2 K-N4
- No. 434—23.PxB QxRP

GAME NO. 648

Played blindfolded in Hartford, 1957.
White: G. Koltanowski. Black: Dr. Joseph Platz.

QUEEN'S GAMBIT

1.P-Q4	P-Q4	30.R-K1	BxN
2.N-KB3	P-QB4	31.PxB	RxR
3.P-B4	P-K3	32.KxR	P-QR4
4.PxQP	KPxP	33.P-QR3	K-K2
5.N-B3	N-KB3	34.K-Q2	N-K1
6.P-KN3	N-B3	35.B-R3!	N-N2
7.B-N2	P-B5	36.P-N4!	K-Q3
8.O-O	B-QN5	37.PxP	N-R4
9.B-N5	B-K3	38.B-N4	NxP
10.N-K5	O-O	39.B-B3	N-Q6
11.P-K4(a)	BxN	40.P-B6	N-K4
12.PxB	P-KR3	41.B-Q5!	N-N3
13.BxN	PxB(b)	42.P-KB7	P-R4
14.N-N4	K-R2(c)	43.P-KR4	N-B1
15.N-K3	N-K2	44.K-K3	N-N3
16.Q-B3	PxP	45.K-K4	N-B1
17.QxBP	N-N3	46.K-B5	P-N5
18.QxQ	QRxQ	47.BPxP	P-B6
19.BxP(d)	P-QN4	48.B-K4	PxP
20.P-B4	P-B4	49.PxP	N-R2
21.B-N2	KR-K1	50.K-N6	N-B1ch
22.KR-K1	N-K2	51.K-B6	N-K3
23.QR-Q1	K-N3	52.P-B7	N-B1
24.K-B2	K-B3	53.P-B8-Q	P-B7
25.P-Q5	B-Q2	54.QxNch	K-Q2
26.N-B2	N-B1	55.Q-K8ch	K-B2
27.N-Q4	N-Q3	56.Q-B6ch	K-N1
28.N-B6	R-QR1	57.Q-N7	mate(e)
29.RxR	RxR		

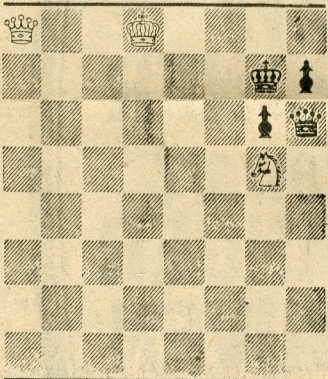
(a) White plays it real sharp! (b) If 13 . . . QxB; 14.PxP wins a piece.
(c) K-N2 was better. (d) A good pawn up, but the game still has to be won!
(e) My opponent, who is champion of Connecticut, wanted to see how I would mate him . . . he saw!

Solution to yesterday's ending: 1.R-QN5,RxR; 2.R-QN4,RxR; 3.P-N8-Qch,N-N6ch; 4. QxNch draw.

WHITE WINS

Study by E. Wolanski
Szachy, 1956

BLACK: 4



D-169

WHITE: 3

White to play and win. (Solution tomorrow).

SIMULTANEOUS EXHIBITION by George Koltanowski against 30 opponents takes place tonight at 8 p. m. at the Covington School, Covington road (off El Monte), in Los Altos. Two blindfold games and a lecture will follow the exhibitions. All chess fans are invited to attend. Those that wish to play should bring board and men.