

The Chess Column

JAN. 28 1955

By George Koltanowski

- | | |
|------------------|--------|
| No. 73—26.K-N2 | K-Q4 |
| No. 118—16.P-KB4 | Q-N5ch |
| No. 147—14.N-K2 | N-Q2 |
| No. 159—13.BK3 | BxN |
| No. 173—8.N-B3 | P-B3 |
| No. 399—44.K-R2 | RxP |

GUEST ANNOTATOR
GAME NO. 1098

Played by Correspondence.
White: Alex Dunne, Pennsylvania.
Black: Erik Osbun, Santa Rosa.

QUEEN'S GAMBIT DECLINED

- | | | | |
|------------|--------|-------------|---------|
| 1.P-Q4 | N-KB3 | 14.R-Q1 | N-K2(b) |
| 2.P-OB4 | P-K3 | 15.B-K5(c) | R-KN1 |
| 3.N-KB3 | P-Q4 | 16.B-B6 | Q-B1 |
| 4.B-N5 | P-KR3 | 17.P-K5 | N-Q4(d) |
| 5.B-R4 | B-N5ch | 18.O-R7 | R-N3 |
| 6.N-B3 | PxP | 19.O-R8ch | B-B1 |
| 7.O-R4ch | N-B3 | 20.P-KR4(e) | NxP |
| 8.P-K3 | P-KN4 | 21.PxP(f) | O-N2 |
| 9.B-N3 | N-Q4 | 22.PxP | Q-K5ch |
| 10.R-B1(a) | B-Q2 | 23.K-O2 | RxB(g) |
| 11.O-B2 | P-ON4 | 24.PxR(h) | O-O-O |
| 12.P-K4 | NxN | 25.R-K1 | N-K7 |
| 13.PxN | B-R6 | Resigns | |

Notes by Erik Osbun.

(a) Preferable is 10.Q-B2. (b) A prophylactic measure against P-Q5. (c) White attempts a quick solution to his problem. More prudent is 15.B-K2, P-KB3; 16.P-KR4, R-KN1; 17.PxP, RPxP; and it looks equal. (d) The refutation. (e) After 20.R-B1, NxB; 21.PxN, O-Q1; White is lost. (f) If 21.P-R5, RxB; 22. QxR, Q-N2; 23. R-Q2, Q-K5ch; 24.B-K2, NxB; 25.RxN, Q-N8ch etc. (g) White was threatening 24.QxBch, KxO; 25.P-R7 winning. (h) Loses quickly. But if 24. QxR, NxR etc. or 24.KxN, RxN etc.

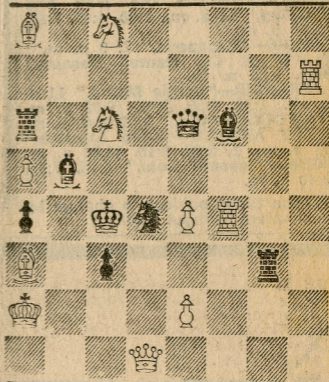
Solution to yesterday's problem is: 1.R-KB6.

PROBLEM

By Kho Khing Hway, Malang, Indonesia.

First Publication.

BLACK: 9



D-20

WHITE: 11

White to play and mate in two moves. (Solution tomorrow.)