

MON 28 SEPT 1959

# The Chess Column

By George Koltanowski

No. 5—43.K-K5      N-B8  
 No. 43—35.P-N3      P-B4  
 No. 130—34.P-KR3      35.P-B5  
 No. 145—14.PxP      PxN  
 No. 148—18.O-B3      P-N3  
 No. 215—11.O-N3      12.BxPch

## GUEST ANNOTATOR

GAME No. 1271

Played: Invitational Expert Tournament, Sonoma, California.

WHITE: Sutherland. BLACK: Hoppe.

## SICILIAN DEFENSE

1.P-K4	P-QB4	14.N-K2	O-O
2.B-QB4(a)	P-K3	15.P-KB4	OR-B1
3.N-QB3	N-QB3	16.N-N3	P-KN3(e)
4.P-O3	N-KB3	17.P-KB5	O-B4
5.B-KN5	B-K2	18.R-B2	KPxP(f)
6.BxN	BxB	19.PxP	P-O4
7.KN-K2	P-QR3	20.OR-B1	Q-O3(g)
8.P-QR3	P-ON4	21.PxP	BPxP
9.B-R2(b)	P-Q3	22.N-K4(h)	Q-K4
10.O-O	B-O2(c)	23.NxBch	RxN
11.Q-Q2	O-N3	24.RxR	B-B4
12.0R-N1	N-O5	25.RxB	PxR
13.NxN	PxN(d)	26.O-N5ch	White Wins

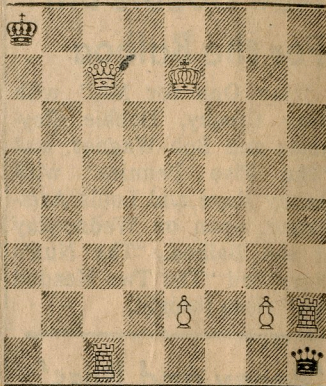
(a) B-QB4!?, White's pet line against the Sicilian Defense. (b) Watch the sleeping bishop which is the object of the defense. (c) QB should go to N2, black now should aim at P-N5. (d) BxN, 14. N-K2 P-N3 probably better for black. (e) Doesn't stop P-B5. (f) Allows the sleeping bishop to awaken. (g) KB has to leave now. (h) The triumph of the sleeping bishop.

Solution to Fridav's problem: 1.N-N2.

## PROBLEM

By Dr. W. Speckmann, Germany

BLACK: 2



D-70

WHITE: 6

White to play and mate in two moves. (SOLUTION TOMORROW.)