

OCT. 29 1958

Chess

By George Koltanowski

No. 20—36.R-K7 R-B7
 No. 118—10.B-N5 P-N5
 No. 120—18.R-Q1 QR-Q1
 No. 148—11.R-K1 B-B3
 No. 175—5.O-O B-Q2
 No. 176—5.P-Q3 P-Q3

GAME NO. 1033

FUTURE CHAMPIONS

If I say future champions, I mean on a National and International scale. We have a number of youngsters in Northern California, who if trained right and given the opportunity to participate in tournaments would soon be amongst the best in the world! You will see a number of them in action at the Sheraton-Palace Hotel tournament on December 13-14, and you too can participate by entering either the A, B, or C division tournament, or play in the one day event, either Saturday or Sunday. Entry fee is \$3 for the two day tournaments, if you are a member of Chess Friends of Northern California. Otherwise you add \$2 for the membership. For the single day tournament the entry fee is \$2 for members of CFNC. Otherwise you include your membership fee. Send your name, address, phone number and entry fee to Chuck McGinley, 2763 Chelsea Drive, Oakland 11, Calif. Here is a game from the last Sheraton-Palace tournament held in San Francisco, 1958; by two of our leading young players today.

White: Erik Osbun, Santa Rosa.
 Black: Dave Krause, Palo Alto.

DUTCH DEFENSE

1.P-Q4	P-KB4	18.QxQNP	R-KB2
2.P-KN3	N-KB3	19.Q-R6	R2-B2
3.B-N2	P-K3	20.N-Q4	N-B4
4.N-KB3	B-K2	21.Q-R3	B-B2
5.P-B4	O-O	22.N-N5	R-K2
6.O-O	P-Q4	23.NxP	R-R1
7.P-N3	QN-Q2	24.QxN	R1xN
8.B-QR3	N-K5	25.BxP	RR2-B2
9.BxB	QxB	26.BxBch	KxB
10.Q-B2	P-B3	27.O-Q5ch	K-B1
11.QN-Q2	P-K4?	28.O-Q8ch	K-B2
12.BPxP	BPxP	29.R-Q2	P-R4
13.NxP	NxNK4	30.R1-Q1	P-R5
14.PxN	QxP	31.R-Q7	Q-B3
15.N-B3	O-B3	32.QxRch	Resigns
16. QR-Q1	B-K3		
17.Q-B7	QR-B1		

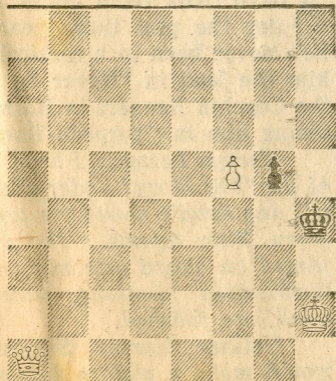
Solution to yesterday's problem: K-B6, K-K5; 2.K-O6, K-O5; 3.R5-B4 mate.

PROBLEM

By J. Aizikowicz, Haifa, Israel

ORIGINAL

Black: 2



D-58

White: 3

White to play and mate in three moves. (Solution tomorrow)