

*By George Koltanowski*

No. 255—5.P-Q3	B-Q2
No. 258—13.N-KR4	N-R4
No. 260—1.P-Q4	2.N-KB3
No. 275—2.N-KB3	N-QB3
No. 281—2.N-KB3	N-QB3
No. 282—2.N-KB3	N-QB3

### GAME NO. 1415

Played in the Northern California Championship, 1960.

White: D. Crawford. Black: R. Thacker.

1.P-K4	N-QB3	13.BxP	Q-Q2
2.P-Q4	P-K4(a)	14.P-KR3	R-OB1
3.N-KB3(b)	PxP	15.PxB(f)	RxB
4.NxP	B-B4	16.PxQP	RPxP
5.NxN(c)	NPxN	17.PxP	NxP
6.B-Q3	P-Q4	18.B-N6ch	K-B1
7.O-O	N-K2	19.QR-Q1(g)	
8.Q-B3	B-K3		Q-R2(h)
9.N-B3	P-KR4(d)	20.BxQ	R2xB
10.B-KN5	B-KN5	21.Q-N8ch	NxQ
11.Q-N3	P-B3	22.R-Q8ch	K-B2
12.B-KB4	P-N4(e)	23.RxR	RxR
			Resigns

(a) The Nimzowitch Defense. (b) Better is 3.P-Q5.

(c) This gives Black quick development. Better is 5.B-K3.

(d) Thacker in his element—attack!

(e) Who cares for a pawn?

(f) If 15.B-R5,B-Q3; 16.Q-K3,B-B5; 17.Q-K1,BxRP etc.

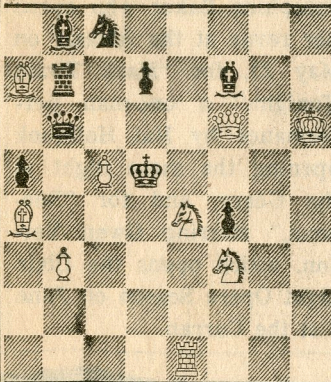
(g) White has no idea of what is going to hit him next.

(h) Lovely! A fairy tale come true—a Queen sacrifice. All that follows is forced.

**Solution to Friday's problem:** 1.Q-KR1.

### PROBLEM

By A. H. Gouly, England  
Black:9



**D-47**

**White:9**

White to play and mate in two moves. (Solution tomorrow.)