

CHESS

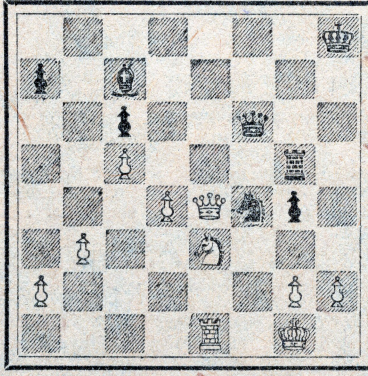
By E. J. CLARKE

Address all communications to Chess Editor, San Francisco Chronicle

It is too much to pay. It is too much to pay, after a course in a garage taken in the interests of

of Pennsylvania. The following is a hard-fought game, played in the above mentioned exhibition:

Game Ending No. 88.
R. C. Sellers (Black)



J. R. Capablanca (White)

White to play (1. P-Kt4) and black answers (P-Kt6); (2. R-KB1) (PxPch). Here black could have won with Kt-R6ch; if now PxKt, then mate in three follows, and if K-R1, then QxRch, followed by Kt-B7ch, winning back the queen; (3. K-R1) (R-Kt1).

4. P-Kt5 Q-Kt4
5. QxP R-Kt2
6. P-R4 Kt-K7

NOTES

By E. W. Gruer.

- (a) Slow variation of Ruy Lopez; much favored by Steinitz.
(b) It is essential for Black to play P-Q4 as soon as possible.
(c) Better was B-B2 or BxS. The text move gives Black too much freedom and White has a bad queen's pawn.
(d) Not a bad finish. (In fact, a very pretty finish.—C.)

GAME NO. 80 KRIEGSPIEL

S.	E. W. Gruer	S.	E. W. Gruer
Maynard	Black	Maynard	Black
1—P-K4	P-KB3	14—B-S6	R-B3
2—P-Q4	P-K3	15—B-S5	RxB
3—P-KR4	P-QB3	16—PxR	S-S
4—B-Q3	S-KR3	17—S-B4	S-B3
5—S-KR3	S-R3	18—P-KS3	B-Q2
6—P-KB3	QS-B2	19—R-R2ch	K-S
7—P-R3	B-K2	20—R-R5	Q-S-K
8—Q-Q	Q-Q	21—Q-R2	K-B
9—Q-B2	R-S	22—R-R8ch	S-S
10—R-B2	P-Q4	23—RxSch	KxR
11—PxP	BPxP	24—O-R7ch	K-B
12—BxPch	K-R	25—QRS mate	
13—P-R5	P-B4		

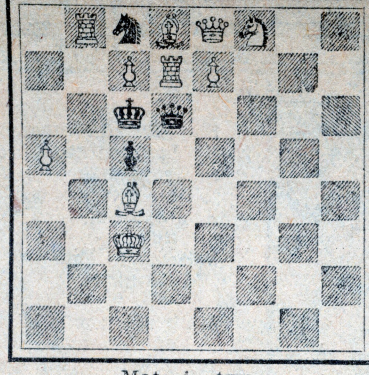
Problems

A. J. F.

PROBLEM NO. 87

From the Good Companion, April folder. Shakespeare complete block award. Third honorable mention.

By G. Hume, Nottingham, England.



Mate in two.

The king doth keep his reels here tonight; Take heed the queen come not within his sight. —Midsummer Night's Dream, ii. I.

The Franklin Chess club in inviting Mr. Capablanca to give a simultaneous chess performance decided to make a charge of \$1 to play and \$1 admission to all nonmembers of the Musical Art club. The innovation proved to be a great success, as the room was well filled; fifty-three participated in the combat and \$128 was received at the door. Result of play: Won, 47; drawn, 6; lost, 1 to S. T. Sharp, champion of the State

The University of California chess team easily defeated the Stanford University players in their annual match by a score of 5½ to 1½. At one board a game was given up as drawn, whereupon the veteran Hallweger pointed out a neat win. Position: White—K at QS5, Q at Q2. Black—K at QS8, P at QR7. White persisted in checking and the game was given up as a perpetual. 1 K-S4, P-R8(Q); 2 K-S3 and wins.

S. Maynard has won the kriegspiel tournament at the Mechanics' Institute, 6 to 1. Several are tied for second prize at 4 to 3. A fine specimen of this imaginative form of chess is printed below.

State Champion E. W. Gruer won the fourth game in his match with Professor A. W. Ryder at the Faculty club, University of California campus, Tuesday evening. The score now stands: Gruer 3, Ryder 1.

The Composite Game

Judgment as to black's best move 4½ was practically unanimous in favor of knight to QB3. However, the plausible 4½ P-QB4 received some support. The latter move has been tried, but is not to be recommended. Including this week's move, the game stands:

1. P-Q4, P-Q4; 2. P-QB4, P-K4; 3. PxP, P-Q5; 4. S-KB3, S-QB3. What is white's best move? Get in the game!

E. L. Hinckley	4½	S-QB3
F. Smith	4½	P-QB4
F. Santallier	4½	S-QB3
R. M. Folger	4½	S-QB3
F. Maus	4½	S-QB3
"Inca"	4½	P-QB4
E. W. Gruer	4½	S-QB3
S. E. Silrius	4½	S-QB3
F. Alf	4½	S-QB3
E. R. Wiffen, Stockton	4	S-KB3

The multiple-check theme by Frank Maus, diagrammed in last week's column, called forth considerable comment. Several correspondents, however, failed to find the full quota of checks. They consist of: R, 14; B, 13; knights, 4; Q, 4; KP, 12 (discovering and queening to four pieces on three squares); BP, 5. Another grouping, which also gives 52 initial checks, is: 1s1bs12; 1RfPKPQ2; 2p5; 1P6; 2SBS1K1; 3R3B; 8; 8. It may be mentioned that the little black pawn at g7 in last week's diagram came unbidden to the feast of reason, etc.

GAME NO. 78

The third game from the pending Gruer-Ryder match in which the latter is outplayed from the start. Gruer winds up the game very smartly.

RUY LOPEZ

A. W. Gruer	E. W. Gruer	A. W. Ryder	E. W. Gruer
White	Black	White	Black
1—P-K4	P-K4	20—P-QS4	SxB
2—S-KB3	S-QB3	21—QxS	BxB
3—B-S3	P-QR3	22—R-S	Q-QB3
4—B-R4	S-KB3	23—P-KR3	P-B5
5—P-Q3(a)	P-Q3	24—PxP	BxB
6—P-QB3	P-KS3	25—SxB	QxP
7—QS-Q2	B-S2	26—S-R3	QxP
8—S-B	Castles	27—R-R	Q-K3
9—S-K3	P-Q4(b)	28—Q-K4	P-QS4
10—PxP(c)	QxP	29—KR-K	B-R3
11—S-S	QxS	30—R-K2	Q-S6
12—B-S3	Q-Q3	31—S-S	P-KB4(d)
13—Castles	B-B4	32—Q-B2	R-QSch
14—S-K	QR-Q	33—K-R2	B-B5ch
15—B-P2	S-K2	34—P-S3	Q-Q4
16—B-K3	P-QB4	35—P-B3	QxP
17—Q-K2	S-Q4	36—QxR	BxPch
18—QR-Q	KR-K	37—R-S	B-B7ch
19—Q-Q2	Q-S5	38—Resigns	

"Gets-It" Relieves Corns in 30 Seconds

Ask Your Friends—They Know

Thousands of people have only

Famous Health through

"A Wonderful Help Perfect" Says Beautiful Telling of Her Amazing

"It was by purest accident that I of Ironized Yeast just as I was stage for a long needed rest. Time proved that it was just what I actually feel like a new born woman."

Such is the amazing statement known to vaudeville lovers all over beauty of her figure. Miss L. acquainted with her work, porcelain and marble, with her

"My stage work," continued Miss severe strain on my nervous system came a hardship. I lost my appetite worn-out. Then I discovered Ironized not give enough praise to it. I find in every way, and that it is a great my body in wonderful condition. permanent place of honor in my travels.

"Worth \$500"

"I weighed only 158 pounds, yet now I weigh 197. I have had eruptions but they have faded away leaving a clear skin. IRONIZED YEAST has been worth \$500 to me."

—Mr. J. G.

In every in e by YE. asto ever YE. pr