

Chess

By George Koltanowski

- No. 23—2.N-KB3 N-QB3
 No. 26—2.P-QB4 P-KN3
 No. 27—2.P-KN3 N-QB3
 No. 241—41.K.B2 42.R-R8
 No. 335—15.R-Q2 P-QR3
 No. 406—24.P-N4 PxN

GAME NO. 382

Played in Berlin Tourney 1956.

White: Mandel. Black: Bialas.

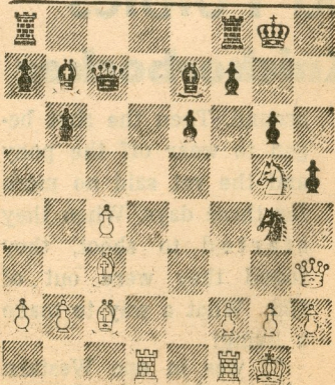
NIMZO-INDIAN

- | | | | |
|----------|-----------|-------------|-------------|
| 1.P-Q4 | N-KB3 | 9.B-N5 | P-KB3 (b) |
| 2.P-QB4 | P-K3 | 10.P-KR4 | P-Q3 |
| 3.N-QB3 | B-N5 | 11.P-K5 | PxKP |
| 4.P-K3 | P-B4 | 12.PxKP | B-K5 |
| 5.B-Q3 | O-O | 13.R-R3 (c) | PxB |
| 6.P-QR-3 | BxNch | 14.PxP | BxB |
| 7.PxB | P-QN3 (a) | 15.NPxN | B-N3 |
| 8.P-K4 | B-N2 | 16.Q-N4 | Resigns (d) |

(a) Better is 7... P-Q4. (b) Correct would have been 9... P-Q3; 10.P-K5, PxP; 11.PxP, B-K5 etc. (c) That's the difference. (d) After 17.Q-R4 its all over.

WELL PLAYED!

BLACK: MISS SONJA GRAF



WHITE: MISS VERA MENCHIK

Match, London 1927. White to move.

1.R-Q7, Black resigned. After 1... QxR; there follows: 2.QxRP, PxQ; 3.B-R7 mate. Immediately 1.QxRP achieves nothing after 1... QxPch.