

The Chess Column

By *George Koltanowski*

No. 180—5.P-Q4 P×P
No. 189—5.P-Q4 P-Q3
No. 191—4.N-B3 N×P
No. 192—4.O-O B-K2
No. 194—4.N×P B-B4
No. 434—39.K-B5 P-B4

GAME NO. 1100

Played in the Holiday Tourney,
San Francisco.

Entered for the Kolty Trophy.

White: David H. Krause, Palo Alto.

Black: Robert A. Karch, San Lorenzo.

KING'S INDIAN DEFENSE

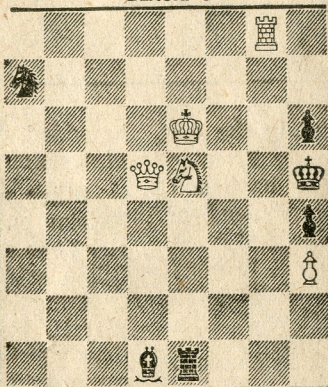
1.P-Q4 N-KB3 12.N-Q5 Q-Q2
2.P-QB4 P-KN3 13.P×P P×P
3.N-QB3 B-N2 14.N-R4 K-B2
4.P-K4 P-Q3 15.N×NP(d)R-K1(e)
5.B-K2 O-O 16.N6-B4 R-R1
6.P-KR4(a) N-B3 17.B-R5ch K-N1
7.B-N5 N×KP(b) 18.B-B7ch K×B
8.N×N P-B4 19.R×R B×R
9.N-QB3 B×P 20.Q-R5ch K-N1
10.N-B3 B-N2 21.Q-N6ch B-N2
11.P-R5 Q-K1(c) 22.B-R6 Resigns(f)

(a) That's youth for you! Attack before development. (b) Hard to grasp. Surely two pawns aren't worth a piece at this early stage of the game. (c) Loses further time. B-K3 was better. (d) Fine finish. (e) If 15... K×N; 16.B-R5ch, K×B; 17.P-B4ch, K-R3; 18.B-K8 mate. (f) After 22... P-K4; 23.N-B6ch, and mate follows soon afterwards.

Solution to yesterday's problem:
1.R-QB3.

PROBLEM

By D. Loannidis, Greece
BLACK: 6



D-31

WHITE: 5

White to play and mate in two moves. (SOLUTION MONDAY.)