

DEC. 31 1958

Chess

By George Koltanowski

No. 33—34. P-B4 35. N-B3

No. 48—23. P-B3 K-B3

No. 73—24. R-K1 K-B2

No. 397—40. P-B5 41. PxP

No. 399—43. O x RP R-B6ch

No. 434—38. R-K2 R-Q6ch

No. 131, No. 143, No. 157 and No. 160. Thanks for resigning.

Solution to yesterday's problem:
1. Q-R5.

GAME NO. 1080

Played in the San Francisco Holiday Tournament, December 14. Entered for the Koltz Trophy.

White: E. Osbun, Santa Rosa.

Black: D. Hardy, Orinda.

GRUNFELD DEFENSE

1. P-Q4 N-KB3 17. B x N P x B

2. P-QB4 P-KN3 18. P x P B P x P

3. N-OB3 P-Q4 19. P-B4 R-N1

4. N-B3 B-N2 20. N-N5 Q-Q2

5. O-N3 P x P(a) 21. Q-KN3 P-B4(c)

6. O x BP O-O 22. O x P R-B3

7. P-K4 B-N5 23. Q-R7ch K-B1

8. B-K3 KN-Q2 24. O-R-N1 P-K4

9. O-N3 B x N 25. B P x P R-B2

10. P x B N-N3 26. B-B4 P x P

11. P-OR4 P-OR4 27. P-O6 P x P

12. O-O-O(b) N-B3 28. R x B N-Q6ch

13. P-O5 N-N5 29. K-N1 N x KP

14. B-K2 N-Q2 30. O-N8ch K-K2

15. P-R4 P-N3 31. R x Rch N x R

16. P-R5 N-B4 32. O x Nch Resigns

(a) 5 . . . P-B3 is also playable.

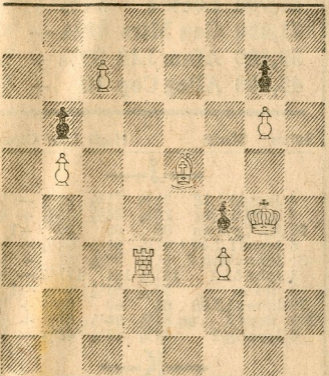
(b) Shows courage. Intends to attack

on the King's side. (c) The pressure

becomes too much for Black. He now

gets run over.

SPECIAL COMPETITION PROBLEM NO. 3



D-14

As you see the Black King is missing. Put it on a square that will permit White to mate in two moves. Watch for traps. There may be more than one solution. Send the square you would put the B King on and the first move of White on a postcard within 3 days, to George Koltanowski, San Francisco Chronicle. There are 15 magazines riding on this.