

By George Koltanowski

No. 51—26.P-R5 27.N-B7ch
 No. 118—9.BxB PxP
 No. 133—6.P-Q4 N-B3
 No. 134—8.NxN PxN
 No. 162—3.B-N5 PQR3
 No. 435—36.R-KN1 P-KN4

GAME NO. 951

Played in the Santa Rosa Championship.

White: Erik Osbun. Black: Orvil Payne.

QUEEN'S GAMBIT ACCEPTED

1.P-Q4	P-Q4	13.N-B4	BxN?
2.P-QB4	PxP	14.QxB	PxP
3.N-KB3	N-KB3	15.BxNP	N-Q4(b)
4.P-K3	P-K3	16.N-K5	P-B3(c)
5.BxP	P-B4	17.QR-B1	Q-R2(d)
6.O-O	P-QR3	18.Q-R5ch	P-N3
7.Q-K2	P-QN4	19.NxP	R-N1
8.B-N3	B-N2	10.N-B4d.ch	Q-B2
9.R-Q1	Q-B2	21.NxN	PxN
10.P-QR4	P-B5	22.QxQch	KxQ
11.B-B2	P-N5(a)	23.BxRP	Resigns
12.QN-Q2	P-B6		

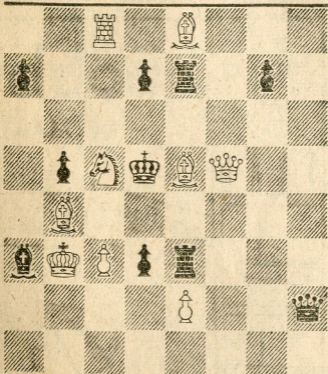
(a) Weakens himself more and more. (b) Allows a King's side attack. (c) Black hasn't much choice: If 16 . . . B-Q3; 17.QR-B1,BxN; 18.PxB,N-B3; 19.B-K4,NxP; 20.BxNK5,QxB; 21.BxN,PxB; 22.RxP,Q-N7; 23.R-K5ch,K-B1; 24.R-B7,P-B3; 25.R5-K7 and white wins (according to Osbun) (d) If 17 . . . PxN; 18.B-N6ch,PxB; 19.RxQ etc. (e) If 19 . . . Q-KB2; 20.N-B4 wins. The rest is easy.

Solution to Friday's problem: 1.R-R7.

PROBLEM

By Arnaldo Ellerman, Argentina

BLACK: 10



D-55

WHITE: 9

White to play and mate in two moves. **(SOLUTION TOMORROW.)**

(The problem is correct, in spite of the fact that white has three bishops!)