

# CHESS

By E. J. CLARKE

The National Chess Federation of the United States has announced its first annual chess championship tournament at Kalamazoo, Mich., August 25 to September 5. Participation will be by invitation only, and the first prize will be the N. C. F. championship medal and \$200. E. W. Gruer of Oakland and A. J. Fink of San Francisco have been invited to take part. Besides this main event, the twenty-eighth annual Western Chess Association tournament will be played as well as the first annual National Chess Federation minor tournament, open to any federation member. Entrance fee, \$5. The first annual banquet, meeting and election of the new federation and the prize awards will take place on Labor day evening. On Labor day afternoon there will be "a grand fancy dress spectacle, consisting of a living chess game, in which the moves will be made by two opposing masters."

Perhaps of more local interest is the annual California State chess championship tournament, which started today at Los Angeles and runs until August 14. E. W. Gruer and A. J. Fink, who tied in last year's tourney, held at the Athens Club, Oakland, along with Henry Gross, the young University of California expert, are representing the Mechanics' Institute Chess Club.

\* \* \* \*

As a result of printing the three lively games by Stasch Mlotkowski recently, we have received an interesting letter from Carl Marshall of Etterburg, Cal., who used to play with "Mlot" at the Franklin Chess Club of Philadelphia back in 1903, when Stasch was a youngster. "One evening," writes Marshall, "I sprang the Greco Counter Gambit on him, which was new to Stasch, and won, although he was, even at that time, a much stronger player than I. He became interested in the opening, played it at every opportunity and at the St. Louis Fair tourney next year he played the Greco whenever he had the black pieces and won enough games with it to win first prize. Mr. Marshall would like to get in touch with some Pacific Coast correspondence chess players, who are invited to write to him for the purpose of a few games by mail.

## GAME NO. 46

### QUEEN'S COUNTER GAMBIT

H. Morris (White)	S. Mlotkowski (Black)	H. Morris (White)	S. Mlotkowski (Black)
1 P-Q4	P-Q4	11 BxP	Castles
2 P-QB4	P-K4	12 Q-B2	S-R3
3 PxKP	P-Q5	13 BxS	PxB
4 P-QB3	S-QB3	14 Castles(?)	B-Q3
5 S-KB3	P-B3	15 P-R3	BxRP
6 PxP	QxP	16 BxP	S-Q5
7 B-S5	Q-S3	17 Q-S6	S-K7ch
8 P-K3	B-KS3	18 K-R	BxPdbl.ch
9 B-Q3	Q-R4	19 KxB	S-B5ch
10 QS-Q2	PxP	20 Resigns	

\* \* \* \*

## GAME NO. 47

### QUEEN'S PAWN

S. Mlotkowski (White)	H. Roberts (Black)	S. Mlotkowski (White)	H. Roberts (Black)
1 P-Q4	P-K3	16 P-KS3	P-KR3
2 P-QB4	P-Q4	17 P-K4	S-B3
3 S-QB3	S-KB3	18 S-K5	Q-Q3
4 S-B3	B-K2	19 SxKBP	KxS
5 B-S5	P-B3	20 P-K5	Q-Q4
6 P-K3	QS-Q2	21 PxS	P-B4
7 Q-B2	PxP	22 QPxP	B-B3
8 BxP	S-S3	23 P-B3	P-S5
9 B-Q3	KS-Q4	24 B-B2	P-KR4
10 BxB	QxB	25 B-K4	Q-K4
11 P-QR3	B-Q2	26 BxB	QxRch
12 Castles	R-QB	27 R-B	QxRP
13 P-QS4	SxS	28 Q-Q7ch	KxP
14 QxS	S-Q4	29 PxPdis.ch	K-K4
15 Q-Q2	P-KS4	30 Q-S7mate	

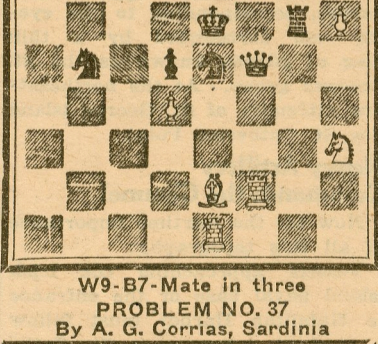
\* \* \* \*

# PROBLEMS

By A. J. F.

## PROBLEM NO. 36

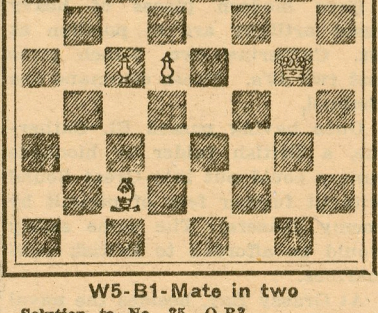
By R. B. Green, Council Bluffs, Iowa



W9-B7-Mate in three

## PROBLEM NO. 37

By A. G. Corrias, Sardinia



W5-B1-Mate in two

Solution to No. 35, Q-R3.

Credits for solving—J. D. Kelleher, Sacramento, 31, 32, 33 and 34; W. L. Pedrick, Ferndale, 34; A. Berkowita, Palo Alto, 31; R. Dunipace, Palo Alto, 32 and 33; F. H. Melhorn, Santa Clara, 31, 32, 34.