

**INVITATION TO JOIN  
THE INTERNATIONAL  
QUADRACHESS SOCIETY**

QuadraChess was developed with the intention of promoting chess on a social level. The QuadraChess Society was formed to enable QuadraChess players to contact other players.

If you would like to become a member of the International QuadraChess Society and receive a listing of other QuadraChess players in your area, elsewhere in the United States, and around the world, please fill out and mail us the application opposite, together with \$4.00 Membership fee.

We'll send you a Membership card and a current list of other players who have authorized us to list their name, address, age, telephone number, and hobbies in the Directory. Periodically, we'll also send you an updated Directory and keep you informed of QuadraChess events (such as festivals, tournaments, and demonstrations) in your area.

**INTERNATIONAL QUADRACHESS SOCIETY  
APPLICATION**

Send the application with \$4.00 membership fee to:

**MEMBERSHIP**  
**CALIFORNIA GAME COMPANY**  
P.O. Box 26862  
San Jose, CA 95159

Date \_\_\_\_\_

(Please print)

NAME \_\_\_\_\_

STREET \_\_\_\_\_

CITY \_\_\_\_\_ STATE \_\_\_\_\_ ZIP \_\_\_\_\_

TELEPHONE NO. ( ) \_\_\_\_\_

Membership valid for two years from date of issue.

- I wish to receive a Directory listing QuadraChess players
- I authorize you to include my name, address, age, telephone number, and hobbies in the Directory \_\_\_\_\_ INITIALS

Please send me \_\_\_\_\_ additional Membership applications

Your age?

- |                                   |                                       |   |
|-----------------------------------|---------------------------------------|---|
| <input type="checkbox"/> Under 18 | <input type="checkbox"/> 37-44        | <input type="checkbox"/> Male             |
| <input type="checkbox"/> 19-26    | <input type="checkbox"/> 45-55        | <input type="checkbox"/> Female           |
| <input type="checkbox"/> 27-36    | <input type="checkbox"/> 56 and above | <input type="checkbox"/> Other (describe) |

Educational level: Years attended school? \_\_\_\_\_

What magazines or newspapers do you read? \_\_\_\_\_

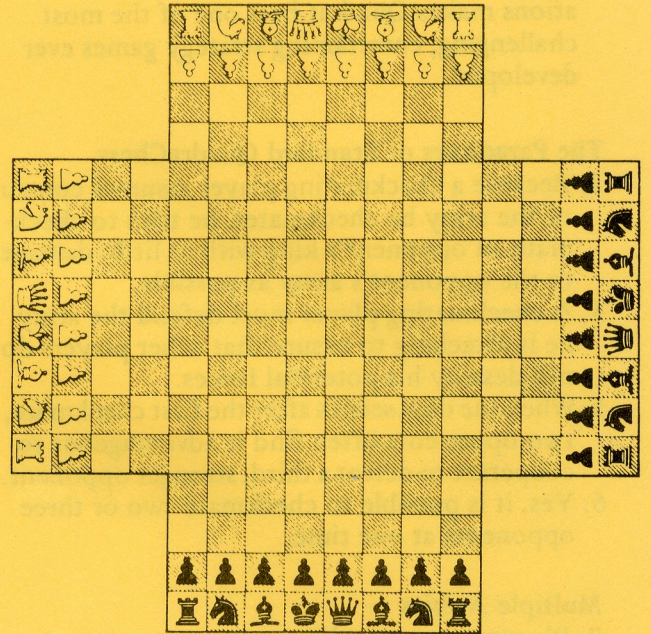
What are your hobbies? \_\_\_\_\_

Occupation: \_\_\_\_\_

How did you first find out about QuadraChess? \_\_\_\_\_

WHAT DO YOU THINK ABOUT QUADRACHESS? \_\_\_\_\_

# QuadraChess™



**25 VARIATIONS**

**NOW FOUR CAN PLAY!  
A NEW ADVENTURE IN CHESS.**

... ABOUT QUADRACHESS

- **WHAT IS QUADRACHESS?**  
Basically, QuadraChess is an expanded version of standard chess. Now, up to four can play.
- **WHAT EQUIPMENT IS USED?**
  1. Four different colored, regulation chess sets (called a Quadraset).
  2. A QuadraChess board (called a Quadraboard), which is a regulation chessboard with four ranks (rows) – called “wings” – added to each side.
- **HOW DO YOU PLAY QUADRACHESS?**  
Like chess. You just place all queens on white squares and set up the other pieces as usual. Then you go after your opponent(s), usually the one(s) to either side of you. If you know how to play chess, there's nothing new you have to learn to play QuadraChess.
- **IS IT DIFFICULT TO PLAY QUADRACHESS?**  
No more difficult than playing a good game of chess, but you have to take a good look before you move. If you enjoy chess, you'll LOVE QuadraChess.
- **HOW LONG DOES IT TAKE TO PLAY A GAME OF QUADRACHESS?**  
Usually between one and two hours. Of course, if players are patient and determined to win, games may last several months.

• **HOW DOES QUADRACHESS DIFFER FROM STANDARD CHESS?**

**GUIDELINES FOR PLAY (PART 1)  
TO START PLAYING . . .**

**In General**

1. Because of the combination of the specially designed Quadraboard and the double set of chess pieces, you can enjoy many variations of chess not possible with standard chess equipment.
2. The possibility of unusual, paradoxical situations makes QuadraChess one of the most challenging, entertaining strategy games ever developed.

**The Paradoxes of Standard QuadraChess**

3. Because a checkmating player assumes control of the army he checkmates, he tries to checkmate an opponent's king with as little damage to the opponent's army as possible.
4. A checkmating player must defend the army he is attacking to ensure that other players do not destroy his potential forces.
5. When the dust settles after the first checkmate, two opponents often find it advantageous to cooperate to defeat a third, stronger opponent.
6. Yes, it is possible to checkmate two or three opponents at one time.

**Multiple Armies**

7. Players can control more than one army. In Double-army QuadraChess, for example, each player controls two armies; in Handicap QuadraChess, one player controls three armies, opposing a player with one army.

**Wild Armies**

8. Several of the most popular variations have "wild" armies (armies available for the use of any player).

**Partnership**

The many partnership variations make strategy coordination exciting to watch because it is so actively nonverbal (partners may not discuss strategy during the game).

**PIECE SETUP:**

All queens are on white squares (diagonally opposed to each other). Colors may be set up in any sequence.

**PLAY:**

Unless otherwise noted (as in Freestyle QuadraChess, Rosenthal Version), play is always clockwise, in sequence, beginning with any army.

**TURN TO MOVE:**

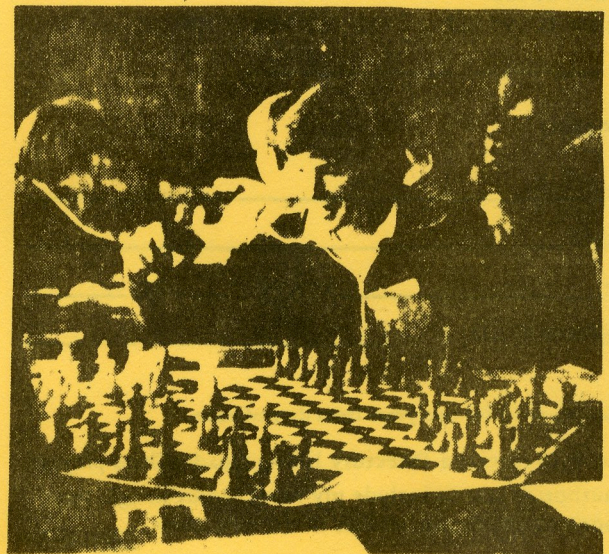
Each player has one move per turn for each army he controls: one army, one move per turn; two armies, two moves per turn; three armies, three moves per turn.

That's all you need to know to start playing!

**SAMPLE GAME: STANDARD QUADRACHESS**

Four players each control one army. The player who checkmates his one surviving opponent wins. (A player who checkmates an opponent's king assumes control of the opponent's army.)

Strategy tip: Attack the player to either side of you; the player opposite you is too far away at the beginning of a game.



\*\*\*\*\*

**GAME VARIATIONS**

**FOR 2 PLAYERS**

**Double-army QuadraChess (Short Version)**  
Two players each control two adjacent armies. The first player who checkmates either of his opponent's kings wins.

**Handicap QuadraChess**  
One player controls three armies, opposing a stronger player controlling one army. The player with three armies must defeat the player with one army or the player with one army must defeat all three of his opponent's kings to win.\*

**FOR 3 PLAYERS**

**Wildman QuadraChess (Short Version)**  
Three players each control one army; the fourth army is "wild" (like the joker in a deck of cards).\*\* On his turn, a player may move a piece from his own army or from the wild army. The first player who checkmates an opponent's king wins.

**Pile-up QuadraChess (Short Version)**  
One player controls two adjacent armies, opposing two players (partners)\*\*\* each controlling one army; the first player who checkmates an opponent's king wins.

**New York QuadraChess (Hard Version)**  
On opposite sides of the board, two players (partners)\*\*\* each control one army, opposing one player with two armies; the player with two armies must crush both partners' kings or the partners must crush both kings belonging to him to win.\*

**FOR 4 PLAYERS**

**Team QuadraChess (Short Version)**  
On adjacent sides of the board, two players (partners)\*\*\* each control one army, opposing two other partners each controlling one army. The team that checkmates either of the opposing team's kings wins.

\*\*\*\*\*