

FREMONT CHESS CLUB

NEWSLETTER

FREMONT CHESS CLUB MEETS EVERY FRIDAY 7-11 pm.
AT FREMONT COMMUNITY CHURCH (left side entrance)
39700 MISSION BLVD., NEAR STEVENSON BLVD.

MAILING ADDRESS: HANS POSCHMANN, 4621 SENECA
PARK AVE. FREMONT, CALIFORNIA 94538
EDITOR: DAN MC DANIEL



AN INTERNATIONAL NEWSLETTER

JUNE, 1983

cal team to begin

Hans Poschmann announced that he is accepting applications for the Cal Team Chess tournament to be held at the Santa Clara Chess Club.

Deadline for the July 30-31 battle is 7-28-83 by mail (see his address in the newsletter logo), or 9:30 am at the tournament site.

The cost is \$12.00 for a four man-two alternate team. There will be two divisions, based on the average team rating.

LOCAL NEWS

The editor of the newsletter has announced a special edition "Man vs. Machine".

It will consist entirely of games against your home computer, so submit the game scores with the name (brand or otherwise) and level the game was played at.

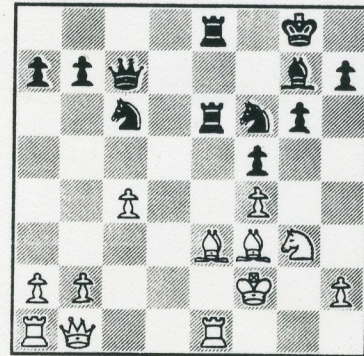
There ought to be a number of laffs.

PAY UP, TURKEYS

It is dues time again! A big \$6.00 will keep you a good member of the club and subscriber to this rag, for the next six months.

Don't blame Reaganomics for failure to pay.

LETELIER - FISCHER
Leipzig, 1960



Black to move and win gloriously.

ho hum, yawn, more \$\$ winners

This is almost a standing feature. Only the names and dollars differ.

* * * * *

Money winners in the recent LERA tournament included Nelson Espiritu and Dan McDaniel from our club.

Nelson won \$35.00 as the best E player, while Dan was a clear second in the B category for \$140.00.

Also competing from the club were: Hans Poschmann 3 pts as an A; Paul Friedrich 2½ A; and Ed Sheffield 3 in the B's.

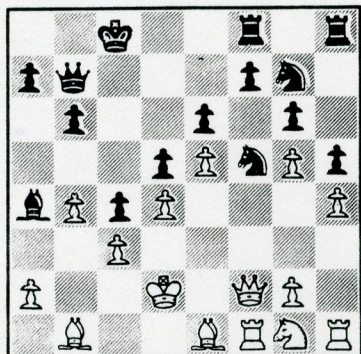
Out of six games, Nelson collected 4½, and Dan 5 points. Hans and Paul faced each other in the 3rd round.

games to laugh by

As none of Dan's brilliant games at LERA are short enough for detailed notes, you'll have to be satisfied with the condensed version.

White: Denny Davis (1689)
Black: Dan McDaniel (1727)

- 1) e4 e6; 2) d4, d5; 3) e5, c5;
4) c3, Qc7; 5) f4, Ne7; 6) Bd3,
Nbc6; 7) Ne2?, b6; 8) Be3, c4?!;
9) Bc2, g6; 10) Nd2, Nf5; 11) Bf2,
h5!; 12) Nf3, Be7; 13) Qd2, Bd7;
14) Ng5, Bg5; 15) fg, Nce7; 16)
h4, Bc6; 17) 0-0-0, 0-0-0; 18) b4?,
Qd7; 19) Rdf1, Ba4; 20) Bb1, Ng7;
21) Ng1, Nef5; 22) Bel, Rdf8; 23)
Qf2, Qb7; 24) Kd2



BLACK TO MAKE HIS 24th MOVE

Up to this point, white is totally frustrated over black's seemingly pointless maneuvering. (Not really pointless...just ask me). He wants to break through on the f or h file. His queenside, however, has terminal cancer.

- | | | |
|-----|-----|------|
| 24) | | a5! |
| 25) | Qe2 | ab |
| 26) | cb | Nd4! |
| 27) | Qe3 | Ngf5 |
| 28) | Qc3 | Qc7 |
| 29) | Bg3 | |

Trying to clear the congestion on the back rank.

- | | | |
|-----|-----|-------|
| | | Nb5! |
| 30) | Qf3 | Rd8 |
| 31) | Ne2 | Rhf8 |
| 32) | Bf4 | Qe7! |
| 33) | a3 | Bb3 |
| 34) | Nc1 | c3+!! |
| 35) | Kel | Bc4! |

Killer chess! These three in between moves, after the initial threat to the a and b pawns win the game outright. White fights on for another 31 moves without accomplishing much.

- | | | |
|-----|-----|------|
| 36) | Rf2 | Qa7 |
| 37) | Ne2 | Qa3 |
| 38) | Rh3 | Qb4 |
| 39) | Bf5 | ef |
| 40) | Nc3 | Nc3 |
| 41) | Qc3 | Qc3+ |
| 42) | Rc3 | b5 |

The rest is instructive mop-up.

- 43) Rb2, Kd7; 44) Be3, Ra8; 45) Bd4, Ke6; 46) g3, Rfb8; 47) Kc2, Ral;
48) Bc5, Kd7; 49) Re3, Rba8; 50) Kc3, Rcl+; 51) Rc2, Rc2+; 52) Kc2, Kc6;
53) Bd4, Ra2+; 54) Kbl, Kd7; 55) Bc5, Ra4!; 56) Ra3, Ra3; 57) Ba3, d4!;
58) Bc5, d3; 59) Kb2, Ke6; 60) Bd6, Kd5; 61) Kc3, Ke4; 62) Kd2, Kf3; 63) Kel, Be6! (not Kg3, dummy! Then e6+ queens the pawn and wins). 64) Kd2, Kg3; 65) Kd3, Kh4; 66) Be7, Kg3; 0-1.

After the 42nd move, white offered a draw, claiming we would get \$64.00 or so. He was refused. After the game was over, we shook hands, but then he wouldn't sign my scoresheet, but ripped it in two!

When asked why, he said "because I don't like the way you play."

I'm supposed to change my style to please him?

* * * * *

Also from LERA.

White: Hans Poschmann (1864)
Black: Paul Friedrich (1733)

- | | | |
|-----|------|-----|
| 1) | Nf3 | Nf6 |
| 2) | c4 | c5 |
| 3) | d4 | cd |
| 4) | Nd4 | g6 |
| 5) | g3 | Bg7 |
| 6) | Bg2 | Nc6 |
| 7) | Nc6 | bc |
| 8) | Nc3 | 0-0 |
| 9) | Qa4? | Bb7 |
| 10) | 0-0 | Qc7 |
| 11) | Rb1 | c5 |
| 12) | Bf4 | d6 |

I still can't figure out what white's queen is doing over on a4.

- | | | |
|-----|-----|------|
| 13) | Nd5 | Nd5 |
| 14) | Bd5 | Bd5 |
| 15) | cd | Rab8 |

Poschmann/Friedrich (Continued)

- | | | |
|-----|-----|-----|
| 16) | Qc2 | a5 |
| 17) | Qd2 | Rb7 |
| 18) | Bh6 | |

White's queen finally has something to do. After three aimless moves, it settles on a square it could have arrived at in one. Here it backs up the black bishop.

- | | | |
|-----|------|------|
| | | Rfb8 |
| 19) | Bg7 | Kg7 |
| 20) | Qc3+ | Kg8 |
| 21) | Rfcl | Rb4! |
| 22) | f3 | Qb7! |

Winning a pawn and the game.

- | | | |
|-----|-----|-------|
| 23) | e4 | Rb2 |
| 24) | Rb2 | Qb2 |
| 25) | Rc2 | Qbl+ |
| 26) | Kg2 | a4! |
| 27) | Qd2 | Qb4?! |

a3 wins quicker.

- | | | |
|-----|-----|-----|
| 28) | Qe2 | Qb5 |
|-----|-----|-----|

Black is obsessed with the idea of trading queens. The previous note still wins.

- | | | |
|-----|-----|------|
| 29) | Qd2 | Qb1 |
| 30) | Kf2 | a3!! |

Black obviously reads the newsletter.

- | | | |
|-----|-----|-----|
| 31) | Ke2 | Rb2 |
| 32) | Kd3 | Qa2 |

The rest is silence.

- | | | |
|-----|-----|------|
| 33) | Qcl | Qb3+ |
| 34) | Rc3 | Qb4 |
| 35) | Rc4 | Qb5 |
| 36) | Ke3 | a2 |
| 37) | Rc2 | Rc2 |

White resigns. His last move isn't a mistake. His game was already beyond hope.

* * * * *

White: Charles Dimaguila (1812)

Black: Hans Poschmann (1864)

Another LERA contest.

- | | | |
|----|-----|-----|
| 1) | d4 | Nf6 |
| 2) | Nf3 | e6 |
| 3) | Bg5 | h6 |
| 4) | Bh4 | b6 |
| 5) | e3 | |

e4 is much more strenuous, though white may eventually need traction.

- | | | |
|-----|-------|-----|
| | | Bb7 |
| 6) | Nbd2 | Be7 |
| 7) | Bd3 | c5 |
| 8) | c3 | d5 |
| 9) | Bf6?! | Bf6 |
| 10) | Qe2 | 0-0 |

- | | | |
|-----|-------|-------|
| 11) | h4 | g6 |
| 12) | g4!? | Nd7 |
| 13) | 0-0-0 | Kg7?? |

An incredibly bad move. By all rights it should lose the game. It removes a defender from the kingside, while a file gets opened.

- | | | |
|-----|------|------|
| 14) | Rdgl | Rh8? |
| 15) | g5! | hg |
| 16) | hg | Be7 |
| 17) | Rh8 | Kf8 |
| 18) | Qf1 | Qg7 |
| 19) | Rh1 | Qg8 |
| 20) | Rh3 | Bd6 |
| 21) | Qh1 | Ke8 |

Hans hangs tough.

- | | | |
|-----|------|----|
| 22) | Rh6 | cd |
| 23) | Nd4? | |

ed was manditory. This gives black targets to shoot at.

- | | | |
|-----|-----|-----|
| | | Nc5 |
| 24) | Bc2 | e5! |
| 25) | Qh2 | Rd8 |

This breaks up the kingside. Watch.

- | | | |
|-----|-----|------|
| 26) | Ne2 | d4!! |
| 27) | ed | ed |
| 28) | Qh3 | Bc8 |
| 29) | Qf3 | Bb7 |
| 30) | Qh3 | Bc8 |
| 31) | Qf3 | Bb7 |

A draw? Give me a break.

- | | | |
|-----|------|-------|
| 32) | Qh3 | dc |
| 33) | Nc3 | Bf4!! |
| 34) | Ncb1 | Bg5! |

This, by the way, traps the rook. White resigns.

* * * * *

White: Bob Pellerin (1680)

Black: James Evans (1774)

- | | | |
|----|------|-----|
| 1) | d4 | Nf6 |
| 2) | Nc3 | e6 |
| 3) | e4 | Bb4 |
| 4) | Bd3 | b6 |
| 5) | Nge2 | Bb7 |
| 6) | 0-0 | |

Bob believes the quicker you develop, the quicker you can sacrifice.

- | | | |
|-----|-----|------|
| | | Be7 |
| 7) | Be3 | d6 |
| 8) | Ng3 | Nbd7 |
| 9) | f4 | h5 |
| 10) | h3 | h4 |
| 11) | Nh1 | Qc8 |
| 12) | e5! | Nd5 |
| 13) | Nd5 | Bd5 |
| 14) | c4 | Bc6 |

Pellerin/Evans (Continued)

15) Nf2 Qb7
 Black wants to castle on the queenside but this leaves him open to a pawn storm, with a very exposed bishop.

- 16) Qg4 O-O-O
 17) c5!! dc
 18) Qe2! Kb8
 19) Ba6 Qa8

Buried alive!

- 20) Nd3 cd
 21) Bd4 Be4
 22) Racl Bb7
 23) Qc2 Rc8
 24) Bb7 Qb7
 25) b4 c6

Trying to gain space, but white's game is overpowering.

- 26) Rbl Rc7
 27) Nc5! Qc8
 28) Ne4 Ka8
 29) Be3 Qf8
 30) a3 Kb8
 31) Rfd1 f5
 32) Nd6 g5

finally getting his pawns moving. Black only began this maneuver on his 9th move...23 moves ago!

- 33) Rbcl g4
 34) Nb5! Rb7
 35) Qc6 Qe8
 36) Nc7! Ne5!?
 37) Qb7+ Kb7
 38) Ne8

Pellerin, in full flight.

- Ng6
 39) Rd7+ Kb8

The rest is easy.

40) Ng7, gh; 41) Ne6, hg; 42) Kg2, 43) Kh2, Bf6; 44) Rcc7, Re8; 45) Rb7+ 1-0.

An outstanding attack.

* * * * *

From LERA.

White: Donald Tiffen (1716)

Black: Ed Sheffield (1799)

- 1) e4 e5
 2) f4

This makes it very difficult for Ed to play Petroff's defense.

- Bc5
 3) Nf3 d6
 4) d4?!

White should develop before he opens lines for both sides.

ed

SOLUTION TO THE PUZZLE

21)...Re3; 22) Re3, Re3; 23) Ke3, Qf4+!! (at this point, white resigns)
 24) Kf2, (if Kf4, Bh6 mate), Ng4+;
 25) Kg2, Ne3+; 26) Kf2, Nd4; 27) Qh1, Ng4+; 28) Kf1, Nf3 etc.

- 5) Nd4 Ne7
 6) Be2 Bd7
 7) c3? Nc6
 8) Be3 Ng6
 9) O-O Qe7

Waiting to see which way the wind blows, then castling away from it.

- 10) Qc2 O-O
 11) b4 Bb6
 12) a4

Hammer blows on air.

- f5!
 13) a5 Bd4
 14) cd Qe4

Virtue is its own reward.

- 15) Bc4+ Kh8
 16) Qe4 fe
 17) Bd2??

Allowing a pawn the chance to advance? Doesn't white read Nimzovitch? "The passed pawn is a criminal which must be put in jail, not watched from a safe distance by the police!"

- Rae8
 18) Bc3 Rf4
 19) Nd2 e3!
 20) Nf3 h6
 21) Rael Bg4
 22) Bd5 Nd8
 23) Bd2 Bf3
 24) Rf3 Rd4!!
 25) Rfe3

White captures the criminal, but the loot is far, far away.

- Ne5
 26) Bc3 Rd5
 27) h3 Ndf7
 28) Rf1 Kg8
 29) Rg3 Rd3
 30) Be5 Ne5

White resigns. Crime pays.

* * * * *

You may have noticed the words: AN INTERNATIONAL NEWSLETTER on our logo. It's true. A couple of back issues were sent to my sister, who is currently living in Guatemala. This is the first step on the road to world domination for the Fremont Chess Club.